

1
9
5
7

bricks and ivy



*the milne school
albany, new york
seniors present*

1957

bricks and ivy

FOREWORD

In order to understand a yearbook, and its basic design, it is necessary to realize the major purpose of the publication; the story of the year by the use of photographs and accompanying description. This story is not told in a chronological chain of events and does not deal with the superficial outline of all happenings, but is more concerned with the high points of the year.

It is comparatively easy to define the skeletal structure of a school as to its organization and physical make up; however, the difficulty lies within the attempt to capture and reveal the school as a human element.

In the BRICKS AND IVY 1957, the portrayal of the human element has been our goal. We have attempted to publish this yearbook as a finger upon the pulse of the movements of the school, making it possible for the reader to see and remember the "heart" of Milne.

VIRGINIA HUNTINGTON

Editor-in-Chief

DEDICATION

"I will with patience hear."

WILLIAM SHAKESPEARE



WE THE CLASS OF 1957 DEDICATE
THIS YEARBOOK
TO
MISS MILLICENT HAINES

In Memoriam



MR. FRANCIS HARWOOD

We, the Class of 1957, wish to remember our beloved teacher, Mr. Francis Harwood, who passed away this year.

TABLE OF CONTENTS

	Page
Seniors.....	7
Academic.....	37
Activities.....	54
Athletics.....	72
Advertising.....	84





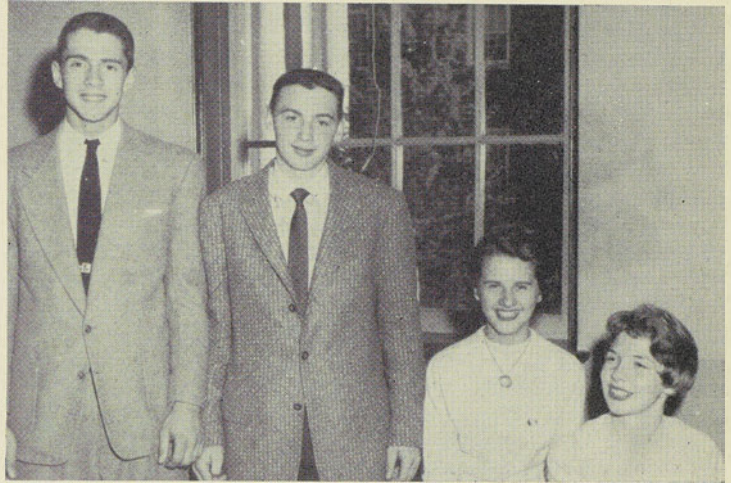


seniors

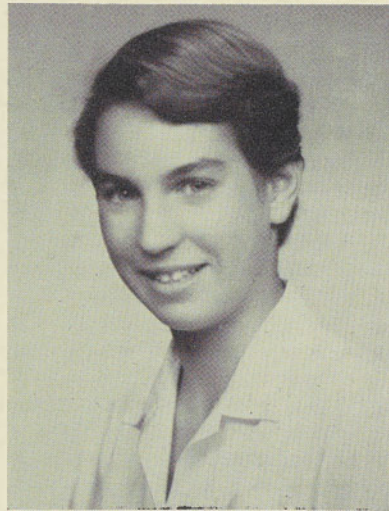
SENIORS

Class Officers

WILLIAM HOFF *President*
VIRGINIA HUNTINGTON *Vice President*
JUDITH SIBUS *Secretary*
WILLIAM ENGLANDER *Treasurer*



DORIS MARKOWITZ
Valedictorian

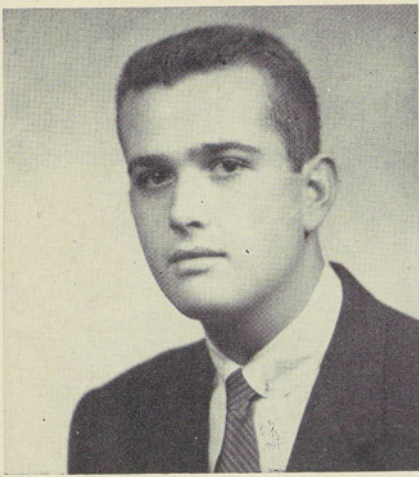


ELLEN HOPPNER
Valedictorian



Honor Students

ELLEN HOPPNER
DORIS MARKOWITZ
ESTHER CLUM
CAROLYN MALE
SANDRA WURST
GERTRUDE FREY
ELLEN SHERMAN
EUGENE BLABEY
ROBERT KERCUL
RUSSEL WEBER

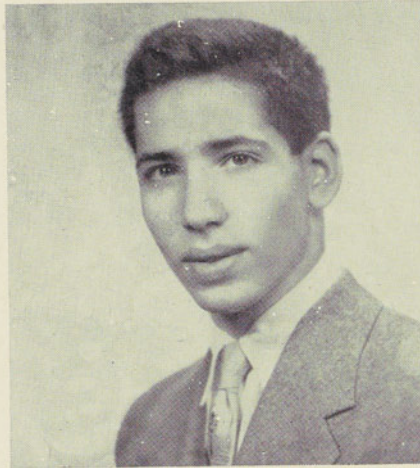


"Big Al" "Al" "Cuzzy Al"

ALAN S. ALPART

B & I; Homeroom Treas. 1; Intersociety Council 4; Theta Nu 1, 2, 3, Pres. 4; Basketball 1; Baseball 1, 2, 3, 4; Milnemen 4; Alumni Ball Decorations Comm.; Senior Play Ticket Comm.

Tell cuzzy . . . always a comment . . . soloist of Milnemen . . . need a cleaner?



"Steve"

STEPHEN JAY ARNOLD

B & I; Asst. Sports Ed. C & W 3, 4; M.B.A.A. 1, 2; Theta Nu 2, 3, 4; Tennis 2, 3, 4; Debate Club 2; Milnemen 4.

Hi-ho Stevo-rino . . . early to bed . . . early to rise . . . late to chem class . . . a little guy with big ideas.

"Rosie" "Rose"

ROSEMARY B. BECKER

Cheerleading Club 1, Squad 1, 3, Capt. 4; Tri-Hi-Y; Sigma; Playdays 1, 2, 3, 4; Alumni Ball Decorations Comm.; G.A.A.

All-American girl . . . Captain Becker of the cheerleading squad . . . that Florida tan.



LAWRENCE BRUCE BERMAN

"Larry" "Laurencio"

C & W; Homeroom Pres. 1, 4, Secretary 2; Hi-Y; M.B.A.A. 1, Pres. 4; Adelphoi; Basketball 1, 2, 3, Varsity 4; Baseball 1, 2, 3, Varsity 4; Student-Faculty Comm.; Milnemen 4; Alumni Ball Decorations Comm.; Senior Play Tickets Comm. Co-Chairman.

A Spanish enthusiast . . . bored with Boards . . . once was sufficient.



ESTHER FRAZIER CLUM

"Twinkle"

Entered 3; Quin; F.H.A. 3, Treas. 4; Alumni Ball General Comm.; Senior Play Costumes Comm.; G.A.A.

Grammar whiz . . . our future homemaker . . . those long walks in the morning . . . Livingston Avenue, I presume.



"Sue" "Cliz"

MINA SUZANNE CLIZBE

Quin; Jr. Choir; Alumni Ball Decorations Comm.; Senior Play Sets Comm.; G.A.A.

Admiral Frisbee . . . Quid est? . . . it's Greek she says . . . Latin that is . . . subtle . . . her laughter is contagious.



"Dan" "Danny" "Animal"

DANIEL RICHARD BROWN

Adelphoi 2, 3, 4; Alumni Ball Decoration Comm.; Hams Inc. 1, 2; Senior Play General Comm.

Tin Lizzie rides again . . . stag drag . . . slow on the talk . . . sincerely yours.

"Gene"

EUGENE H. BLABEY

C & W 1, 2 3, Editor 4; C.S.P.A.; M.B.A.A. 1, 2, 3, Treas. 4; Theseum 2, Treas. 3, Pres. 4; Sports Mgr. 1, 2, Asst. Head Mgr. 3, Head Mgr. 4; Jr. Student Council; Sr. Student Council 3; Internat'l Relations Club 3; Model R.R. Club 2; Sr. Play Program Comm.

"In my opinion" . . . ulcers came easily with the C & W, but deadlines were met . . . elected by majority vote (one) in Theseum . . . "Gracious!"

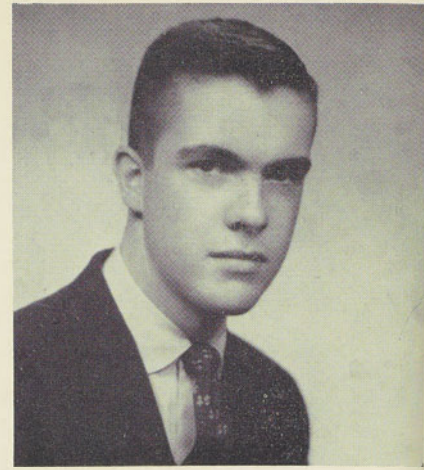


JAMES VINCENT DOUGHERTY

"Jim" "Dag"

Entered 3; B & I; C & W; C.S.P.A.; Hi-Y 3, Pres. 4; Hi-Y Bills Convention 3, 4; Intersociety Council; Theta Nu; Alumni Ball Band Comm. Chairman.

It happens every spring . . . summer . . . winter . . . fall . . . floor the bucket!

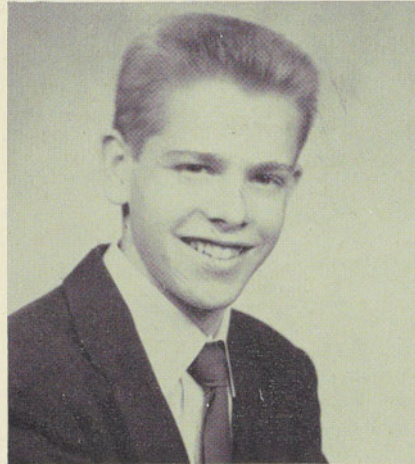


"Dave"

HILDRETH DAVID DONNELLY, JR.

M.B.A.A. 2, Sec. 4; Theta Nu; Baseball 1, 2; Grad. Usher; Milnemen 4; Band 1, 3; Music Council 3.

A question for every occasion . . . deep thinker . . . fiddler . . . traveler from Hoag's Corners.

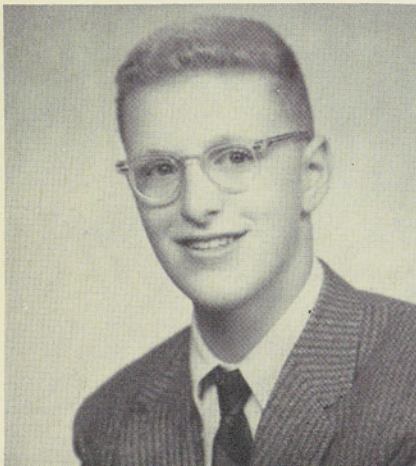


"Jim"

JAMES ARONSON COHEN

B & I; C & W; Homeroom Treas. 3; M.B.A.A. 4; Red Cross 1; Adelphoi; Basketball 1, 2, 3, Varsity 4; Baseball 1; Jr. Student Council Treas.; Senior Student Council Treas.; Student-Faculty Comm. Chairman; Grad. Usher; Milnemen; Alumni Ball Decorations Comm.; Hams Inc. 1; Senior Play Props Comm.

"The dark-haired one" . . . take that jump shot . . . hidden abilities . . . sharp wit.



"Jim" "Percy"

JAMES ALLAN COHEN

C & W 2, Asst. Sports Ed. 3, Sports Ed. 4; Homeroom Treas. 4; Hi-Y; Theta Nu 2, 3, V. P. 4; Senior Play Ticket Comm. Chairman; Alumni Ball Publicity Comm.

"That's ridiculous" . . . Milne's Grantland Rice . . . one of the only natural blondes . . . not to be confused with



"Ike"

JEAN MacDONALD EISENHART

Tri-Hi-Y; Sigma 2, 3, Treas. 4; Playdays; Graduation Usher; Alumni Ball Decorations Comm.; Senior Play Cast; Hams Inc. 2, 3; Sr. Girls Glee Club; G.A.A.

The non-conformist . . . trenchant wit . . . the golden voice . . . our own G.B.S.

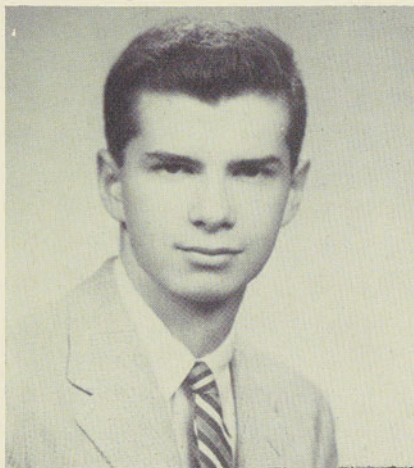


"Jiggs" "Bill"

S. WILLIAM ENGLANDER

Entered 2; Class V.P. 3, Treas. 4; Hi-Y 3, Sec. 4; Baseball 2, 3, Varsity 4; French Club 2; Grad. Usher; Alumni Ball Asst. Chairman; Adelphoi 2, 3, V.P. 4.

We're indebted to Jiggs . . . our immediate success . . . indescribable.



"John"

JOHN WILLIAM FENTON

Entered 3; Homeroom Treas. 3; Adelphoi; Tennis; Milnemen 4; Alumni Ball Theme Comm.

The boy with the three-dimensional thinking . . . scientifically speaking . . . "Let me draw you a diagram."

GERTRUDE IRENE FREY

"Trudy"

C & W Exchange Ed. 4; Quin; Playdays 2; Jr. Choir; Senior Play Costume Comm.; Senior Glee Club; Alumni Ball Invitations Comm.; G.A.A.

Quiet but busy . . . evolving statistician . . . true blue always.





"Lois"

LOIS JEAN GRIMM

C & W; G.A.A.; Tri-Hi-Y; Sigma; Playdays 2; Jr. Choir; Sr. Choir; Sr. Glee Club; Alumni Ball Program Comm.; Senior Play Make-up Comm.

Leader of the clan . . . one of the Loudonville commuters . . . our chorister.



"Maria"

MARIA AGNES HARTMAN

G.A.A.; Sigma; Jr. Choir; Sr. Choir; Alumni Ball Decorations Comm.; Tri-Hi-Y; Sr. Glee Club; Senior Play Costumes Comm.

Open house . . . here she comes . . . one of our few night drivers (legally, that is).



"Louie" "Lou"

LOUIS F. B. HAUF, JR.

Hi-Y; Theta Nu; Hi-Y Bills Convention 2, 3; Milnemen; Alumni Ball Decorations Comm.; Senior Play Props Comm.

Our single worker . . . Louie opens Milne in the morning . . . finds a parking space where no one else can.

ARLENE RUTH HEINMILLER

"Arlene"

B & I; C & W; G.A.A. Rep. 2; Tri-Hi-Y; Sigma; Playdays 1, 2; French Club 2; Jr. Choir; Sr. Glee Club; F.H.A.; Alumni Ball Decorations Comm.

Photogenic . . . brave enough to elect Humanities . . . movie star lashes.

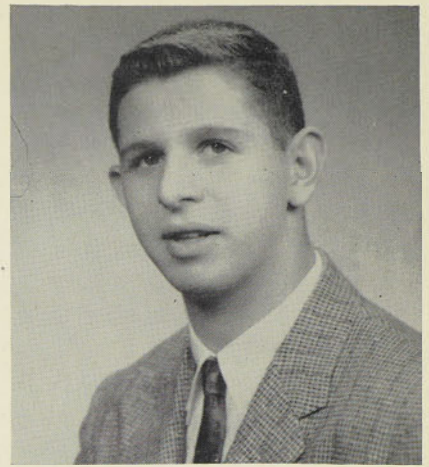


VICTOR LYLE HOFFMAN

"Vic"

B & I; C & W; Theseum Treas. 4; Jr. Choir; Milnemen; Senior Play Cast; Debate Club.

Mr. Bernhardt . . . the return of the briefcase . . . our artiste . . . and psychologist.



"Bill" "Renns" "Bugsy"

WILLIAM C. HOFF, JR.

Entered 3; Basketball Varsity 3, 4; Milnemen; Class Pres. 4; Alumni Ball Decorations Comm.; Grad. Usher; Senior Play Publicity Comm.

Willy . . . Billy . . . Bobby . . . and other aliases . . . pride of the sports page . . . and the girls.



"Mo"

MOIRA JANE HICKEY

Entered 2; B & I; Quin; Sr. Choir; Milnettes 3; Music Council Treas. 4; Alumni Ball General Comm.; Tri-Hi-Y; Sr. Glee Club; Senior Play Tickets Comm.

Her specialty—open houses . . . counselling the music department . . . the girl behind the wheel . . . and the party.



"Sue"

SUSAN JOAN HERSHEY

B & I; C & W Feature Ed.; C.S.P.A.; Class V.P. 2; G.A.A. Office Mgr. 2, Rep. 3; Sigma; Sr. Student Council Rep. 2, 3, Sec. 4; Grad. Usher; Alumni Ball Decorations Comm.; Hams Inc. Sec. 1, 2, 3, 4.

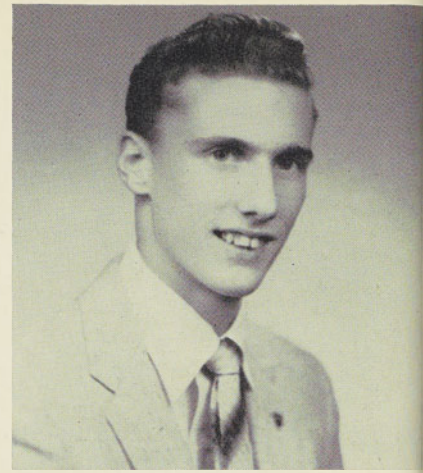
Featuring Sue . . . literary talent . . . student council jotter . . . seen smiling at all times.

WESLEY BRUCE JENNINGS

"Wess" "Weasel"

Hi-Y; Hi-Y Bil's Convention; Adelphoi; Basketball 1; Alumni Ball Lighting Comm. Chairman; Music Assembly Chairman Lighting 1, 2, 3; Senior Play Lighting Comm.

Wes comes through on the clutch . . . Rod Dodge . . . the "Gobbler King".

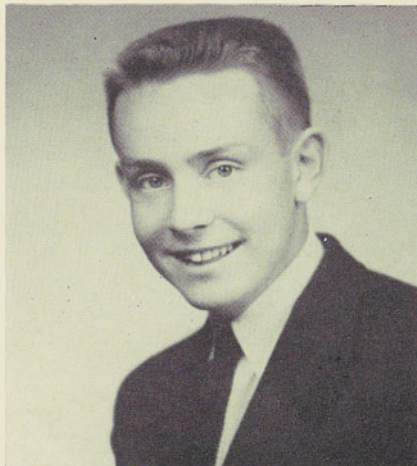


"Virge" "Ginna"

VIRGINIA OLES HUNTINGTON

Entered 2; B & I Ed.; C & W; C.S.P.A.; Quin V.P. 3, Pres. 4; Grad. Usher; Sr. Glee Club; Alumni Ball Decorations Comm. Chairman; Vice President of Class 4; Songleader.

One of our lasses who's lost without glasses . . . chung . . . "I have no time" . . . but the year-book is out.

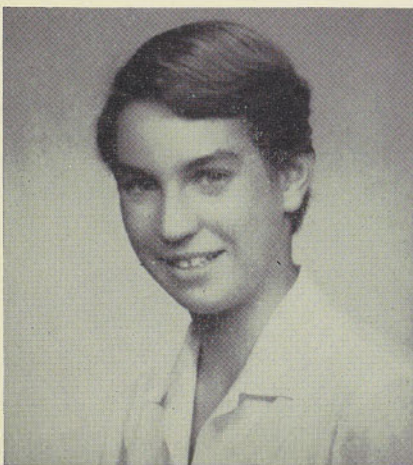


"Bob" "Horny"

ROBERT WILLIAM HORN

Class Pres. 2, 3; Hi-Y; Hi-Y Bills Convention 3; Intersociety Council 4; M.B.A.A.; Adelphoi 2, 3, Pres. 4; Basketball 1; Baseball 1, 2, 3, Varsity 4; Jr. Student Council Pres. 1; Sr. Student Council Pres. 4; Traffic Club 3, 4; Grad. Usher; Milmen; Alumni Ba'l Chairman; Hams Inc.

Cars . . . a new turnover every year . . . always in the driver's seat . . . even in school.



"Ellen"

ELLEN HOPPNER

B & I; C & W Girls' Sports Ed. 4; C.S.P.A.; G.A.A. Bus. Mgr. 4; Red Cross 1; Quin Treas. 4; Playdays 2, 3; Assembly Comm. Sec. 2; Grad. Usher; Alumni Ball Decorations Comm. Co-Chairman; Senior Play Cast.

Linguistic . . . travelled abroad . . . France . . . Switzerland . . . Schenectady . . . a good scout.



"Dick"

RICHARD ERNEST KEEFER

Hi-Y; Baseball 1, 2, 3, Varsity 4; Alumni Ball Effects Comm.; Senior Play Cast.

"Angel, come into my arms!" . . . our historian . . . one of those interested in psychology clubs.



"Bob" "Kerce" "Robbs"

ROBERT GEORGE KERCULL

Theta Nu; Basketball 1; Alumni Ba'l Decorations Comm.; Senior Play Cast.

Sharpened wit . . . sharpened mind . . . sharpened pencils . . . "It's beau-u-u-tiful!"



"Bob" "Bo"

ROBERT STANTON KNOUSE

H.R. Sec. 1, Pres. 2; M.B.A.A. V.P. 4; Adelphoi; Basketball 1, 2, 3, Varsity 4; Baseball 1, 2, 3, Varsity 4; Alumni Ball General Comm.; Senior Play Sets Comm.

Athletic asset . . . one of the McKownville musketeers . . . a very sincere way.

CAROLYN JOAN LACY

"Ki-Ki"

C & W; G.A.A. Rep. 4; Sigma; Sr. Cho'r Treas. 3; Milnettes 3; Sr. Glee Club; Senior Play Make-up Comm.

The girl with her own street . . . another "Humanitarian" . . . carries the second sopranos.





"Sue"

SUZANNE LaPAUGH

G.A.A.; H.R. Treas. 2, 3; Sigma; Playdays 2; Tri-Hi-Y; Alumni Ball Invitations Comm.; Senior Reception Chairman; Sr. Glee Club; Senior Play Program Comm. and Usher.

Well versed in almost everything . . . well read . . . a good worker in any class project.



"Terr"

TERRI ANN LESTER

Entered 1; B & I; C & W; G.A.A. Treas. 3, Pres. 4; H.R. V.P. 2; Sigma M.C. 4; Playdays 2, 3; French Club 2; Grad. Usher; Hams Inc.; Senior Play Asst. Director and Costumes Comm.; Tri-Hi-Y Pres. 3; Alumni Ball Decorations Comm.; Song'leader.

Emcee . . . the songleader . . . girl with a way . . . queen of the business world.



"Connie"

CONSTANCE DALTON LEU

B & I; G.A.A.; Tri-Hi-Y; Sigma Sec. 3; Playdays 2, 3; Hams Inc. 1, 2, 3; Senior Play Props Comm.

Connie Leu who? . . . mind over matter . . . very successful . . . universal friendship.



MARION C. LEVINE

"Cindy"

B & I; C & W; G.A.A.; Red Cross 1; Quin; Playdays 4; Assembly Comm. 3; French Club 1; Jr. Choir; Sr. Choir; Alumni Ball Invitations Comm.

The flair for fashion . . . seen last with a sketch pad or a painting . . . looking for a rabbit?

DORIS RUTH MARKOWITZ

"Shorty"

B & I Lit. Ed. 4; C & W; Mascot 1, 2; Class Treas. 1, 2; H.R. Treas. 1, Pres. 3; Quin; Student-Faculty Comm. Sec. 3; Assembly Comm. 1; Jr. Choir; Music Council 1; Alumni Ball Invitations Comm. Chairman; Hams Inc. Treas. 1, 2, Pres. 3; Senior Play Cast.

Seen last wearing one white trailing lab coat . . . intelligent . . . poetess . . . looking for the challenging.



"Judy"

JUDITH ANN MALZBERG

B & I; C & W "Times-Union" Correspondent; Quin; Hams Inc.; International Relations Club; Senior Play Cast.

Literary talents for the "Times-Union" . . . our senior play Sylvia . . . unlimited potential.



"Penny"

MARGARET ROSE MALE

C & W; G.A.A.; Sigma; F.H.A.; Senior Play Sets Comm.; Tri-Hi-Y; Sr. Glee Club.

Will they ever learn that Penny is her name? . . . young lady from Loudonville . . . our domestically skilled.



"Male"

CAROLYN JOAN MALE

B & I; C & W Associate Ed. 4; C.S.P.A.; G.A.A.; Tri-Hi-Y; Red Cross 1; Quin; Playdays; Jr. Choir; Sr. Choir; Sr. Glee Club; Alumni Ball Decorations Comm.; Senior Play Cast.

Accompanies our concert groups . . . good sport . . . Sciences and Latin are her meat . . . others' poison.

SHIRLEY ANN MYERS

"Shirl"

Sigma; F.H.A.; Alumni Ball Refreshments Comm.; Senior Play Program Comm.
The other half of the red-headed team . . . an intrinsic part of the Senior Room
in the morning . . . what a cookie!



"Sandy"

SANDRA JANE MYERS

Sigma; F.H.A. Treas. 3, V.P. 4; Alumni Ball Refreshments Comm.; Senior Play Programs Comm.
Home economist . . . domestic skills . . . has been with us since the seventh grade days . . .
hard to distinguish from



"Dale"

DAYLE ELIZABETH METZGER

Entered 1; B & I; Sigma; Student-Faculty Comm.; Jr. Choir; Sr. Choir; Milnettes 2; Alumni Ball General Comm.; Tri-Hi-Y; Sr. Glee C'ub; Senior Play Cast.

Our nightingale . . . gifted soprano . . . a sweet manner.

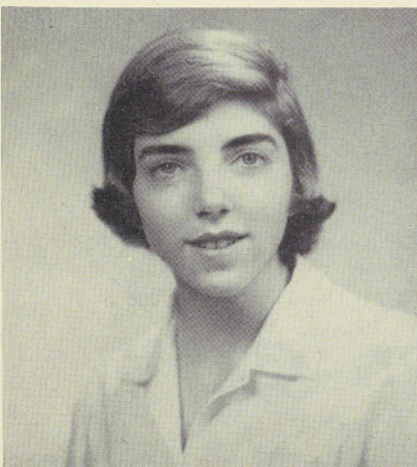


"Ellie"

ELEANOR HEWIT McNAMARA

B & I; C & W News Ed. 4; C.S.P.A.; Cheerleading Squad 1; G.A.A. Sec. 2, V.P. 3; H.R. Sec. 1; Sigma V.P. 3; Pres. 4; Playdays 1; Jr. Student Council V.P. 1; Sr. Student Council 2, 3, V.P. 4; Assembly Comm. Chairman 4; Card Party Co-Chairman 3, Chairman 4; Grad. Usher; Alumni Ball Decorations Comm.; Hams Inc.

Our cheery leader . . . active in almost everything . . . "Hi," to all and high on our list.





"Noodle" "Newt"

CAROL E. NEWTON

B & I; G.A.A.; Tri-Hi-Y Chaplain 3, 4; Sigma; Playdays; Jr. Choir; Sr. Choir; Hams Inc.; Senior Play Sets Comm.; Alumni Ball Refreshments Com..

Exciting . . . history came easily . . . our keyboard wizard . . . and glee clubber.



"John"

JOHN RICHARD OLENDORF

Alumni Ball Design Comm.; Senior Play Sets Comm.; Theseum.

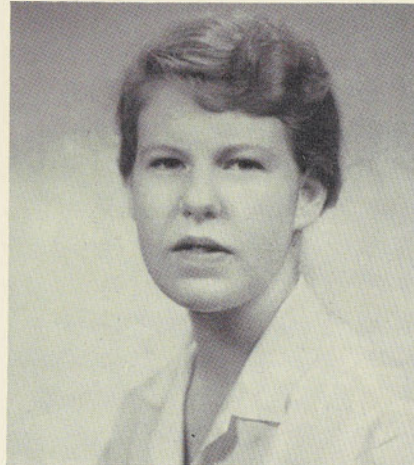
At home at the easel . . . artistic adeptness . . . our quiet talent.

"Katarina"

KAREN BARRIE OLSON

C & W; G.A.A.; Tri-Hi-Y; Red Cross 1; Sigma; Playdays; Jr. Choir; Sr. Glee Club; Senior Play Costumes Comm.; Alumni Ball Program Comm.

Literary insight . . . profound thinker . . . Katarina is our non-temperamental redhead.

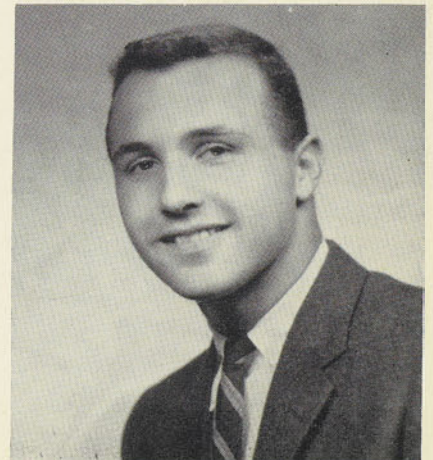


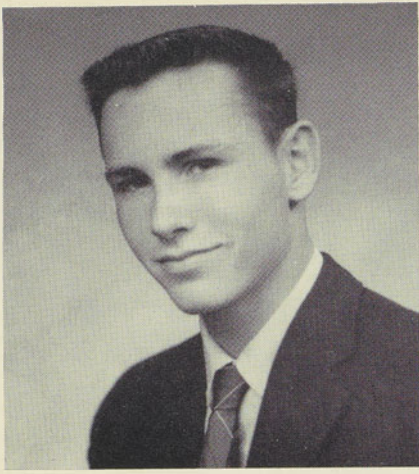
PETER C. PAPPAS

"Pete"

B & I Adv. Mgr. 4; C & W; C.S.P.A.; Hi-Y Sgt.-At-Arms 3; Adelpoi Treas.; M.B.A.A.; Basketball 1, 2, 3, Varsity 4; Baseball 1, 2; Traffic Club 3, 4; French Club 2; Card Party Asst. Bus. Mgr. 3, Mgr. 4; Grad. Usher; Jr. Choir; Milnemen; Hams Inc.; Alumni Ball Decorations Comm.

Popular guy . . . ivy-leaguer . . . dark and good-looking . . . and adding much to our class.



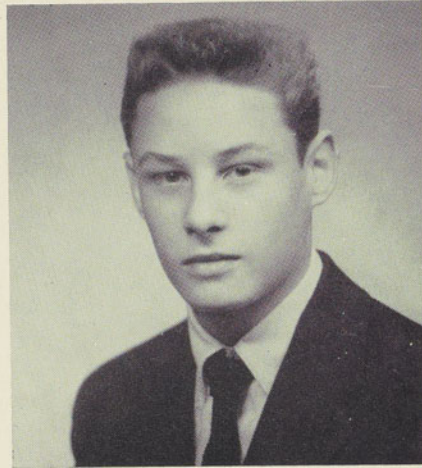


"Jerry"

JERROLD J. POWELL

Entered 2; Adelphoi; Baseball 2; Golf 3, 4; Alumni Ball Decorations Comm.; Senior Play Cast.

That look . . . that melting smile . . . quite an actor . . . and a man of action.

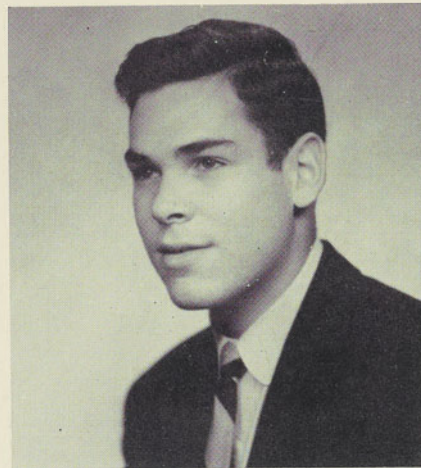


"Bill"

WILLIAM PRICE RULISON

French Club 2; Jr. Choir; Alumni Ball Lighting Comm.; Senior Play Props Comm.

Growing . . . growing . . . grown . . . clever carpenter . . . other interests include cars and skin diving.



"Irwin"

IRWIN SCHER

H.R. Treas. 1; Red Cross 1; Theta Nu; Jr. Choir; Milnemen; Band Treas. 3; Alumni Ball Design Comm.; Senior Play Cast.

"What are you trying to say, sir?" . . . expert musical critic . . . hi-fi debates . . . practical suggestions.

ELLEN CYNTHIA SHERMAN

"Ellen"

B & I; C & W Associate Ed. 4; G.A.A.; Sigma; Playdays; Jr. Choir; F.H.A.; Alumni Ball Program Comm.; Hams Inc.; Senior Play Make-up and Props Comm.

Connecticut Yankee . . . participator . . . English master . . . busy, efficient, hardworking.

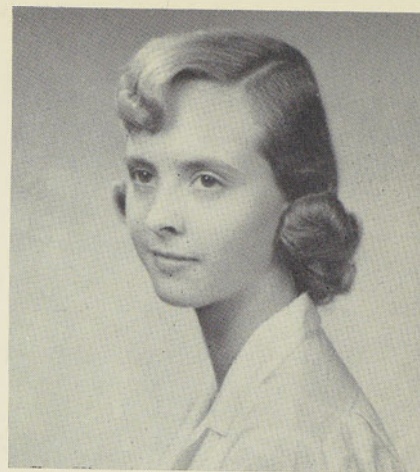


CAROLYN EILEEN STEIN

"Stein"

G.A.A.; H.R. Pres. 2; Quin; Playdays; Sr. Student Council 3; Jr. Choir; Sr. Choir; Tri-Hi-Y Pres. 4; Sr. Glee Club; Hams Inc.; Music Council 2; Senior Play Cast; Alumni Ball Refreshments Comm.

Abigail herself . . . dancer . . . hostess . . . frequent open-houses.



"Wayne"

WAYNE F. SOMERS

C & W Asst. Sports Ed. 2; Theta Nu; Theseum; Senior Play Sets Comm.

The economy-sized mathematician . . . Wayne solves most perplexities . . . something to figure out? . . . Wayne can do it.



"Judi"

JUDITH-ANNE SIBUS

Entered 4; B & I; Class Sec. 4; G.A.A.; Senior Play Sets Comm.

New . . . charmed our numbers . . . petite . . . oh boy!



"Linda"

LINDA SYLVIA SHERMAN

Entered 3; B & I; C & W Staff 4; Quin; F.H.A.; Alumni Ball Decorations Comm.; Senior Play Make-up Comm. Chairman.

Spotlighter . . . bouncy . . . intelligent . . . small, but crammed with ideas.



ARLEEN F. SUSSER

"Suss"

G.A.A; Quin; Playdays; Jr. Choir; Sr. Choir; Milnettes 2, 3; Sr. Glee Club; Tri-Hi-Y; Alumni Ball Decorations Comm.; Senior Play Cast.

Arleen's for fun . . . singer, dancer, and actress . . . open houses, slumber parties, and those weekends at the camp.

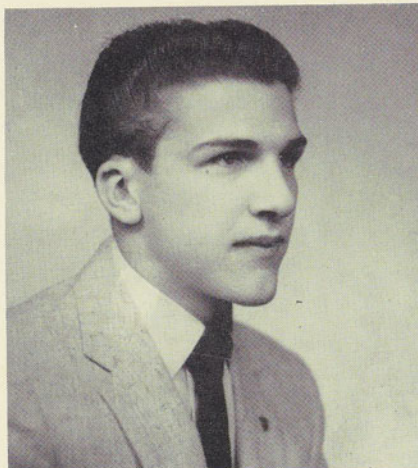


"Helen"

HELEN S. STYCOS

C & W Staff 4; Quin; F.H.A. Pres. 3, 4; Alumni Ball Refreshments Comm. Chairman; Senior Play Program and Make-up Comm.

Grecian beauty . . . neatness . . . F.H.A. prexy . . . business wise, she's a natural.

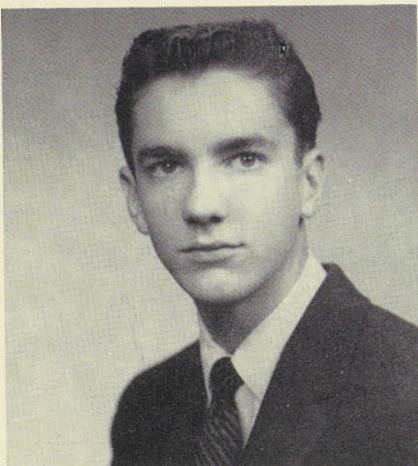


"Rog"

ROGER ROBERT STUMPF

Alumni Ball Effects Comm.; Senior Play Lighting and Sound Comm.

Love of cars . . . mechanical mind . . . the pride of the "Tri-City Flywheelers".

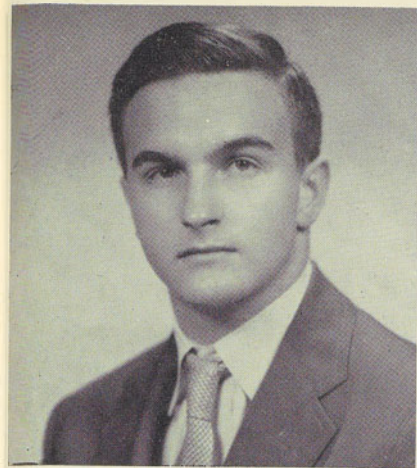


"Andy"

CHARLES ANDERSON STOKES

Basketball 1; Student-Faculty Comm. 4; Grad. Usher; Milnemen; Band; Alumni Ball General Comm.; Senior Play Cast.

Rhythm personified . . . dancer . . . drummer . . . from seventh grade puppet show to senior play lead . . . a friendly guy.



"Dick"

RICHARD KELLOGG THOMSON

Jr. Choir; Senior Play Tickets Comm.; Music Council.

Young violinist and symphonist . . . Dick's musical talent will take him far.

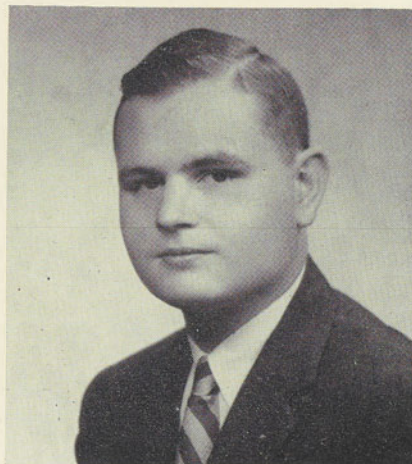


"Betty"

ELIZABETH MAY WASSMER

Entered 2; G.A.A.; Sigma; Sr. Choir; Milnettes 3; Band 2, 3, 4; Music Council 2; Alumni Ball Refreshments Comm. Chairman; Senior Play Sets Comm.

Dual musical abilities . . . Betty's sewing talents have amazed us all . . . her own creations reflect Dior.



"Russ"

RUSSELL CHARLES WEBBER

Theta Nu; French Club 2; Band 1, 2, 3, Pres. 4; Music Council; Alumni Ball Decorations Comm.; International Relations Club; Senior Play Tickets Comm.

Serious-purposed . . . musical . . . intelligent . . . one of our nicest guys.



SANDRA JEAN WURST

"Sandy"

Entered 1; B & I; G.A.A.; H.R. Treas. 2, V.P.; Tri-Hi-Y; Tri-Hi-Y Bills Convention; Quin; Alumni Ball Invitations Comm.; Senior Play Props Comm.

Frankly speaking . . . skiing at Bousquet's . . . hee hee . . . Nurse Wurst.

Milne At Night

When entering the halls
Deep in the night,
Milne is deserted.
The corridors bare.

Shadows of lights
Shine on the floor.
As the exits are marked
Where night will leave.

The watchmen tend the darkness
And keep order in the shadows.
The signs and displays hold no meaning
For the unfaltering red lights at the exits.

As hours depart,
The ladies arrive
To clean, dust, and sweep away
The shadows of the night.

Morning creeps in,
And life seems to be renewed.
The exits give up their titles
And become doorways to learning.

DORIS MARKOWITZ

Growth

When we arrived in seventh grade,
The girls were bold and boys afraid.
Towering over their male cohorts,
The girls could lick the boys at sports.

But time progressed, and boys grew older.
The girls were timid and boys much bolder.
But height was still a situation.
For males held the lower station.

Summer in our junior year.
Saw end to every girlish fear.
When school commenced in fifty-six,
The boys arrived tall, sine pogo sticks.

Looking at old photographs
Brings many a chuckle and plenty of laughs.
Remember him? My gosh how small!
And now he's eighty inches tall.

So students glancing through this book
Be sure to cast a serious look
At all whose pictures now appear.
They may be different in a year.

THAT'S THAT



CLASS STORY TELLERS

Al Alpart, Carol Newton



FRIENDLIEST

Pete Papas, Sue Hershey



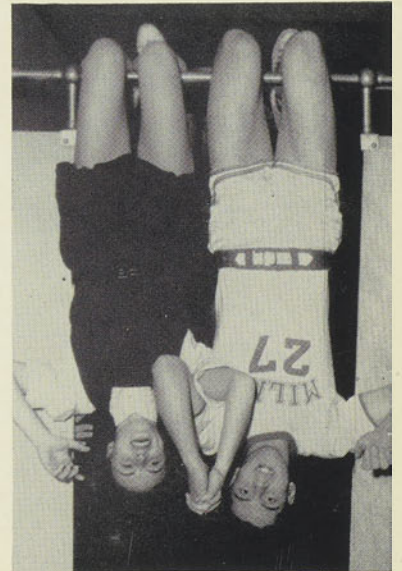
MOST STUDIOUS

Russ Weber, Doris Markowitz



BEST LIKED

Bill Hoff, Ellie McNamara



MOST ATHLETIC

Bill Hoff, Rosemary Becker



BEST DANCERS
Andy Stokes, Terri Lester



BEST DRESSED
Jiggs Englander, Ginny Huntington



CLASS HACKERS
Al Alpart, Jean Eisenhart



MOST TALENTED
Dick Thompson, Carolyn Stein



MOST SOPHISTICATED
Jim Cohen, Helen Stycos



HEADED FOR SUCCESS
Gene Blabey, Doris Markowitz



BEST SILHOUETTES
Jim Cohen, Ginny Huntington



CLASS CHARMERS
Jim Dougherty, Judi Sibus



DID MOST FOR MILNE
Bob Horn, Ellie McNamara



CLASS POLITICIANS
Irwin Scher, Sandy Wurst

ONCE UPON A TIME...



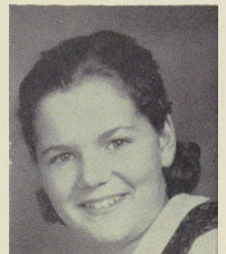
We heard the Upper Classmen . . .



When we were young and gay . . .



. . . and they lived happily ever after.





No football team, but . . .



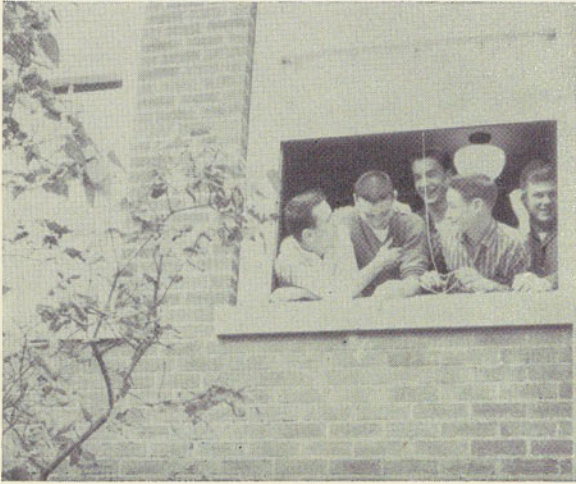
All in a spare moment.



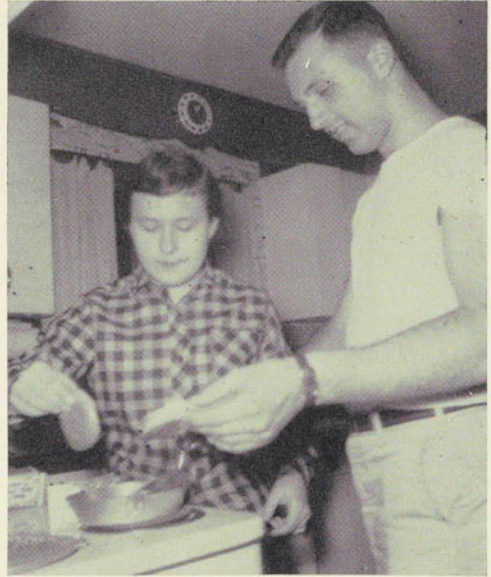
Cheers to the modern age, and privilege of youth.



An assorted variety . . .



On your head . . .



Ode to a Hamburger . . .

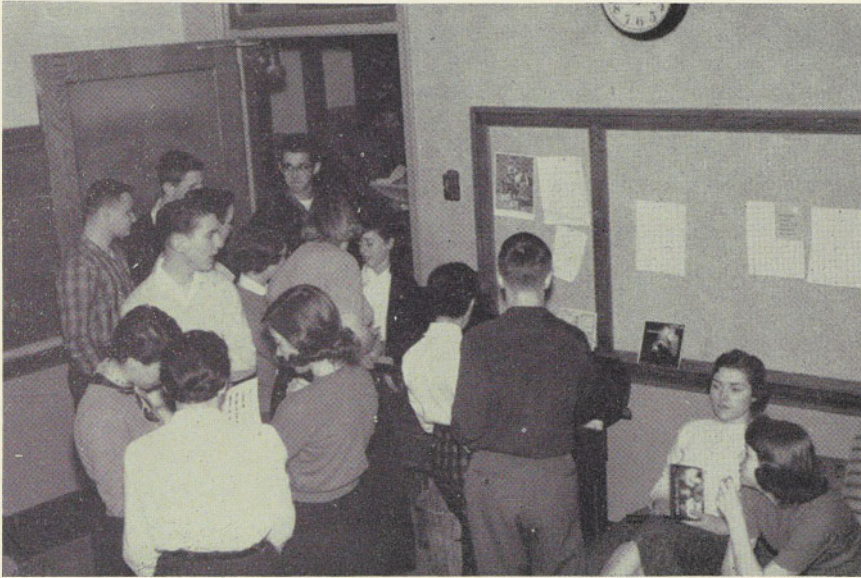


Oh Gooooo00000 . . .

12th Grade



Look at Victor . . .



Sigh . . . Time to go to class.



A time to eat . . .



Time for work . . .



A time to . . .

"Mother is a Freshman"



Behind the scenes . . .



Down Boys . . .



Calm, smooth, casual?



You Idiot . . .



Ended . . . and it was great.

CLASS WILL

WE, THE CLASS OF 1957 WILL:

- leave our marriageability to the juniors.
- leave the Senior Girls' Glee Club to another class lacking talent.
- leave things alone in the chem department.
- try to leave the Senior Room in one piece with its wall-to-wall flooring intact.
- leave Miss Dunn, Miss Haynes, and Mrs. Walker to some temporary peace and quiet.
- leave a repair guarantee on the Senior Room phonograph for posterity.
- leave our height to future basketball teams.
- leave our highly endowed treasury to the next depression budget.
- leave our cymbalist, violinists, clarinetists, and pianists to the R.Y.A. Symphony Orchestra.
- leave James A. Cohen and James A. Cohen to seating charts of student teachers who think they have all the confusion possible.
- leave our 800 Board scores to juniors who will undergo similar tortures.
- leave our English folders in Dr. Cochrane's office in order to demonstrate why B+ is a good mark.
- relinquish our Latin III class to German I students.
- leave the "Snickerdoodle" as the school cookie.
- leave blue-green algae as the school plant.
- leave the student as the school mascot.
- see to it that Wayne Somers leaves his growing pills to Judy Safranko.
- see that Doris Markowitz donates her book "Giant" to Connie Evans.
- leave Miss Murray's tango records to Coach Grogan's dance class.
- leave Miss Murray a better communication system for piping square dance music to the classroom.
- leave patrons for the Milne PX.
- leave Billy, Bobby, William, and Bill Hoff to a newspaper sports columnist.
- leave Milne in a hurry.



academic

ADMINISTRATION

PRINCIPAL
Dr. Theodore H. Fossieck



"This opportunity of including a message in your yearbook is one of the more pleasant duties of a high school principal. On behalf of your teachers and the other members of the Milne staff I want to take this means of expressing our satisfaction on another successful year in the history of Milne and our congratulations to the BRICKS AND IVY staff on the excellent work it did in capturing the year's achievements in this book. We hope that each time you leaf through this yearbook each of you will remember with happy affection your friends, associates, and faculty of this year."

THEODORE H. FOSSIECK



SECRETARY TO THE PRINCIPAL
Mrs. Marion C. Scully

GUIDANCE DIRECTOR
Mr. Harold Howes





MUSIC

Dr. Roy York, Jr.

ART

Mrs. Brita Walker

SCIENCE

Dr. Carleton Moose
Mr. Cecil Johnson



SOCIAL STUDIES

Miss Millicent Haines
Mr. Arthur Soderlind
Dr. Gerald Snyder

BUSINESS

Mr. Theodore Baird



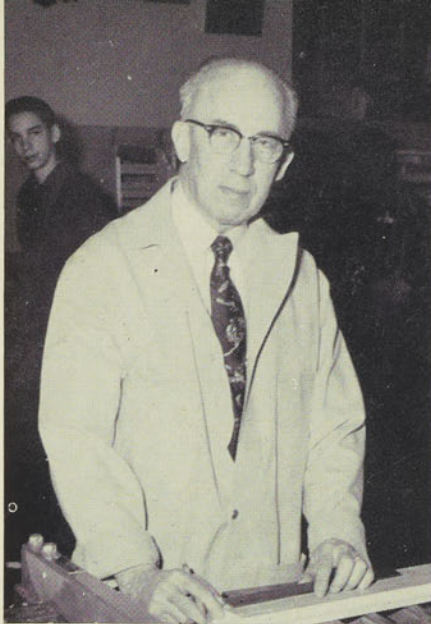
ENGLISH

Mr. Hugh Smith
Mr. Edward Fagen
Miss Anita Dunn
Dr. James Cochrane

MATHEMATICS

Miss Elizabeth Glass
Dr. Randolph Gardner
Mr. Glenn DeLong





INDUSTRIAL ARTS

Mr. Harlan Raymond



PHYSICAL EDUCATION

Miss Lydia K. Murray
Mr. Harry Grogen



HOME ECONOMICS

Mrs. Anna Barsam



LIBRARY

Miss Mabel Jackman
Mrs. Marguerite Clarkson

MAINTENANCE

Mr. Charles Sacks
Mrs. Clara Schmidt
Mr. Joseph Sammons



LANGUAGE

Miss Mary Jane Dewey
Dr. Ruth Wasley
Mr. Jack Krail



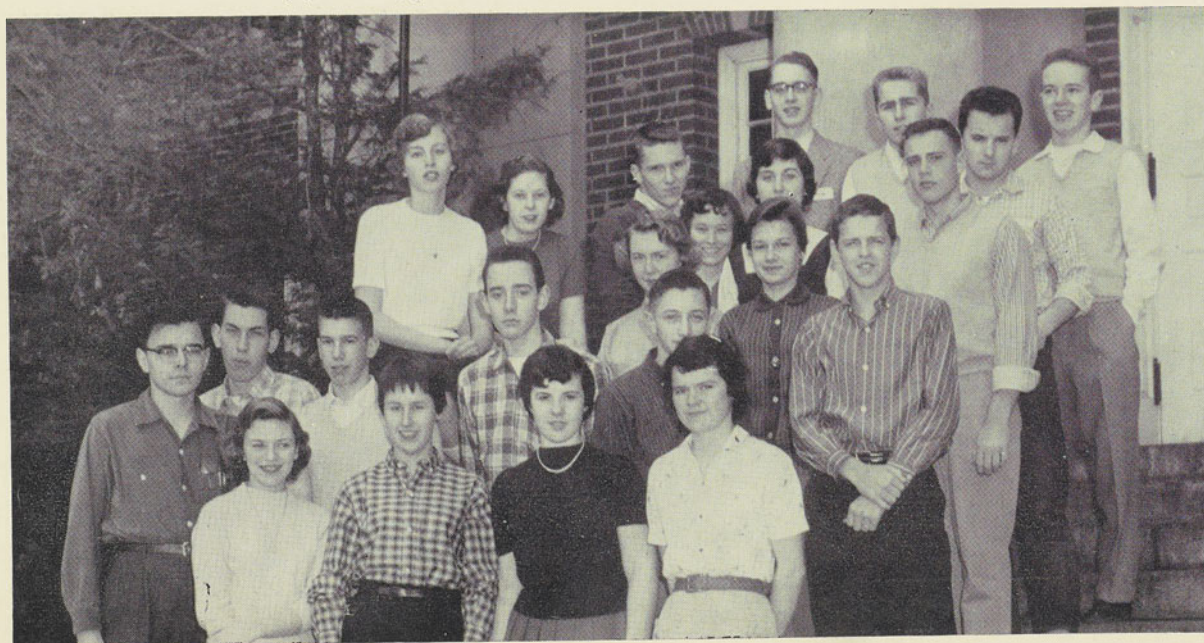
Homeroom 130

First Row: Annabel Page, Carol Bruce. *Second Row:* Kathleen Hunter, Charlotte Sackman, Rita Gosnell, Elizabeth Price, Richard McEwan, Rita Skrindzevskis. *Third Row:* Cynthia Frommer, Anthony Sroka, James Lind. *Fourth Row:* Patricia Averill, Jean Verlaney, William Reepmeyer. *Fifth Row:* Charles Kleinmann, Howard Werner, Robert Hardy, George Creighton, Harold Chambers, John Samascott, Stephen Ten Eyck.

ELEVENTH GRADE

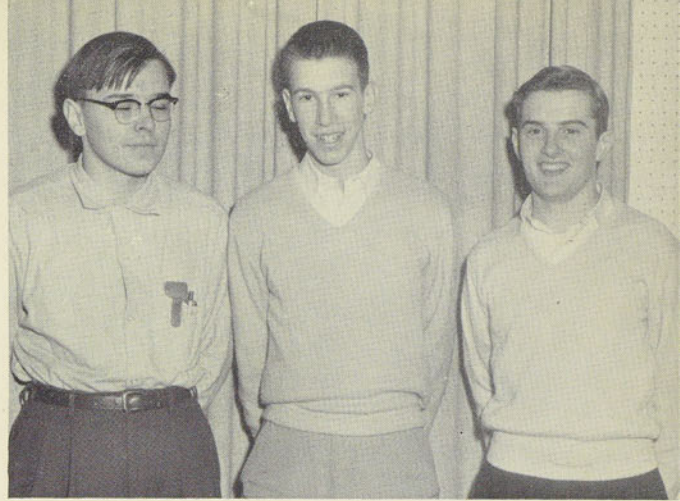
Homeroom 226

First Row: Igor Magier, Doreen Goldberg, Margy Fisher, Carol Rathbun, Nancy Starker. *Second Row:* Frederick Corbat, Robert Snyder, Richard Requa, Dicran Berberian. *Third Row:* Diana Reed, Nancy Starker, Joyce Seymour, Carol Becker, Wayne Grant. *Fourth Row:* Clayton Knapp, Stephanie Condon, Robert Killough, Donald Wicks, Thomas Sternfeld, Tony Javorkuti, John Garman.



Class Officers

ROBERT SNYDER	<i>President</i>
ANNABELLE PAGE	<i>Vice President</i>
(Missing)	
RICHARD McEWAN	<i>Secretary</i>
IGOR MAGIER	<i>Treasurer</i>



Beware the eleventh grade . . . we were warned about the hardships of such a year . . . for a while we believed them . . . but then came the Alumni Ball . . . it wasn't so bad . . . no crepe paper . . . just trees . . . our boys were holding their own on varsity . . . soon came the time for our research papers and the C.S.P.A. . . . we used up all our energy in both projects . . . our cards were alphabetized . . . our money was gone . . . we found ourselves loaded with activities boundless . . . would we live out our last year? . . . we were told that everyone else does . . . we bade the seniors adieu . . . and now, fellow juniors, we are seniors.

Homeroom 327

First Row: Sue Goldman, Suzanne Baldwin, Suellen Disarro, Patricia Moore, Mary Lou Bentley. *Second Row:* Jane Armstrong, Patricia Scoons, Abby Perlman, Nancy Einhorn, Adrienne Rosen, Elain Cohen. *Third Row:* William Grim, Thomas Cantwell, John Binley, Scott Roberts, Edward Sells, Kent Gardner, Roger Dewey, William Warren, Stephen Crane, Laurence Kupperberg, Edward Nichols, William Airey.





Homeroom 337

First Row: William Fettick, Linda White, Ann Quickenton, Dee Huebner, Ann Pitkin, Sybillyn Hoyle, Sheila Cain. *Second Row:* Howard Wildove, Fred Taylor, Judy Somers, Mary McNutt, Barbara Kircher, Sheila Burke, Kathleen Hall, Robert Kraft, Ann Marshall. *Third Row:* Richard Gear, Robert Bildersee, Jonathon Harvey, Wesley Jacobs, Eric Sauter, Bruce Smith, Mark Perry.

TENTH GRADE

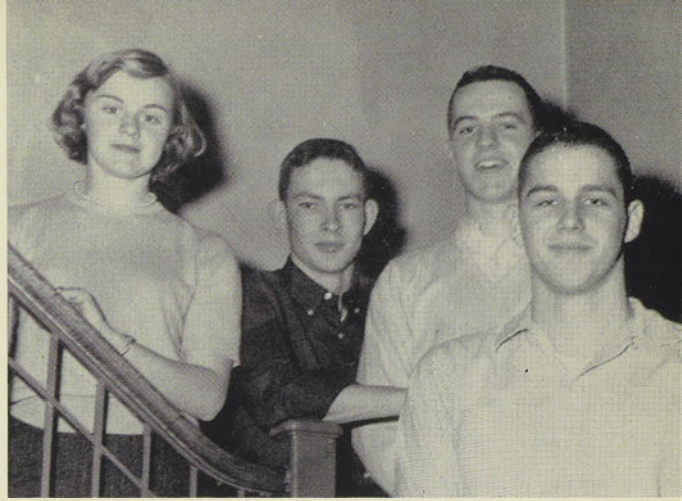
Homeroom 233

First Row: Betsy Snyder, Julie Florman, Bryde King, Nancy Leonard, Karen Dougherty. *Second Row:* Paula Propp, Mary Breeze, Joanna Wagner, Elaine Ault, Gretchen Seiter, Linda Scher, Martha Hesser. *Third Row:* William Roth, Keith Warner, Aaron Jasper, Max Streibel, Frederick Bass, Hugh Mehan, Richard Lockwood, John Fenimore. *Fourth Row:* Lawrence Giventer, Harry Grogan, Richard Collins, Gerald Hennerman.



Class Officers

HUGH MEHAN *President*
 ROBERT BLABEY *Vice President*
 DONALD LEWIS *Secretary*
 ANN PITKIN *Treasurer*



Sophs . . . a password to fun . . . not counting the few gray hairs left from mid-years . . . sports . . . did we participate? . . . our varsity five were sure no drag . . . study . . . of course . . . remember "The Black Myriah!" . . . How could we forget her? . . . Societies . . . we joined them all, and established our own when necessary . . . biology terms . . . learn those phyla . . . please pass a frog . . . summary . . . a great year! . . . sure—we'll be back for more!

Shop Homeroom

First Row: Gloria Knorr, Deborah McMillian, Barbara Reynolds, Marylou Haworth, Constance Evans, Nancy Jones, Barbara Sager, Nancy Mathusa, Joan Koschorreck. *Second Row:* John McIlwaine, Charles Mitchell, George Houston, Stephen Radin, Serge Douglas, George Lejniaks, Charles Averill, Bruce Daniels, Robert Blabey. *Third Row:* Donald Lewis.





Homeroom 127

First Row: John Reepmeyer, Stephen LaPaugh, Howard Halligan, Curtis Campaigne, Eric Yaffee, Rancy Snyder. *Second Row:* David Male, John Fogo, Barbara Lester, Dorothy Hoyle, Elizabeth Gemlick, Gracie Stevens, Carolyn Lannon, Judith Johnson, Sandra Male, Carolyn Walther, Joan Brightman. *Third Row:* Kenneth Hoffman, James Allen, Peter Moran, Sarah Gerhardt, Maryanne Maynard, Jan Welt.

NINTH GRADE

Homeroom 128

First Row: Michael Fisher, Warren Abele, Ruth Malzberg, Arlene Tobonsky, Carole Smith, Judith Allen, Virginia Lange, Peter Sarafain, Theodore Woodard. *Second Row:* Stewart Lewis, Nikki Genden, Kathleen Hendrickson, Patricia O'Brien, Ellen Collins, Lynda Dillenbeck, Kathleen Pabst, Charleen Knorr. *Third Row:* Steve Einhorn, Douglas Margolis, Donald Hallenbeck, Henry Hallet, Robert Phillips, Richard Killough, Richard Hutchison.



Class Officers

CHARLES LEWIS	<i>President</i>
STEVEN EINHORN	<i>Vice President</i>
THEODORE STANDING	<i>Secretary</i>
RICHARD KILLOUGH	<i>Treasurer</i>



The frosh invaded senior high . . . J.V. basketball . . . fortunately . . . J.V. cheerleaders . . . naturally . . . two-hour finals . . . too bad . . . morning gym classes . . . bright? . . . no, early! . . . Glee club . . . noted for our rounds . . . student council . . . we tried . . . algebraic is archaic . . . new faces . . . uncomplicated schedules . . . our first chance at electives . . . study, study, study . . . marks count for college . . . the new marking system . . . the "C" earns new prestige . . . our art exhibits . . . shall we start a museum? . . . some of us ate our own home-cooked specialties once a week in Home Ec . . . onward, onward to harder subjects . . . tenth grade, here we come!

Kneeling: William Walther. *First Row:* Howard Burkam, Susan Dey, Sandra Sutphen, Constance Brizzell, Amy Malzberg. *Second Row:* Hurbert Carvey, Willma Mathusa, Nancy Alfred, Charles Lewis, Donald Grimm. *Third Row:* John Taylor, Elaine Feldman, Karen Romain, Joan Haworth, Allison Kelley, Robert Cantwell. *Fourth Row:* Earl Miller, Thomas Rider, Theodore Standing, John Breeze.





Homeroom 228

First Row: Carol Klemka, Douglas Merserlee, Linda Van Zandt, Arthur Leonard, Judy Koblentz, Jane Siegfried, Hugh Dunseath, Alan Markowitz, Lucinda Coffin. *Second Row:* Barbara Currey, Joan Kallenback, Susan Crowley, Linda Ogden, Peter Quackenbush, Sanford Berman, William Brizell, John Hiltz, Andrea Hall, Janice Lenda, Julie Propp, Thomas Dawes, George Jenkins, Kenneth Jewett.

EIGHTH GRADE

Homeroom 129

First Row: Kenneth Olsen, Barry Rosenstock, Joe Allison, Garry Heinmiller, Keith Shaver, Michael Clanahan. *Second Row:* Penelope Pritchard, Janice Humphrey, Janet Arnold, Betty Weinstein, Sandra Chamberlain. *Third Row:* Barbara Musicus, Ann Oliphant, Nancy Southern, Bonny Reed, Joan Switzer. *Fourth Row:* Donald Kingston, Jamet Grimm, Joyce Rissberger. *Fifth Row:* Charles Sivaslian, Michael Russell, John Axelrod, Stuart Horn, Kenneth Lockwood.



Class Officers

DAVID BLABEY	<i>President</i>
STEVEN RICE	<i>Vice President</i>
KENNETH LOCKWOOD	<i>Treasurer</i>
PENELOPE PRITCHARD	<i>Secretary</i>

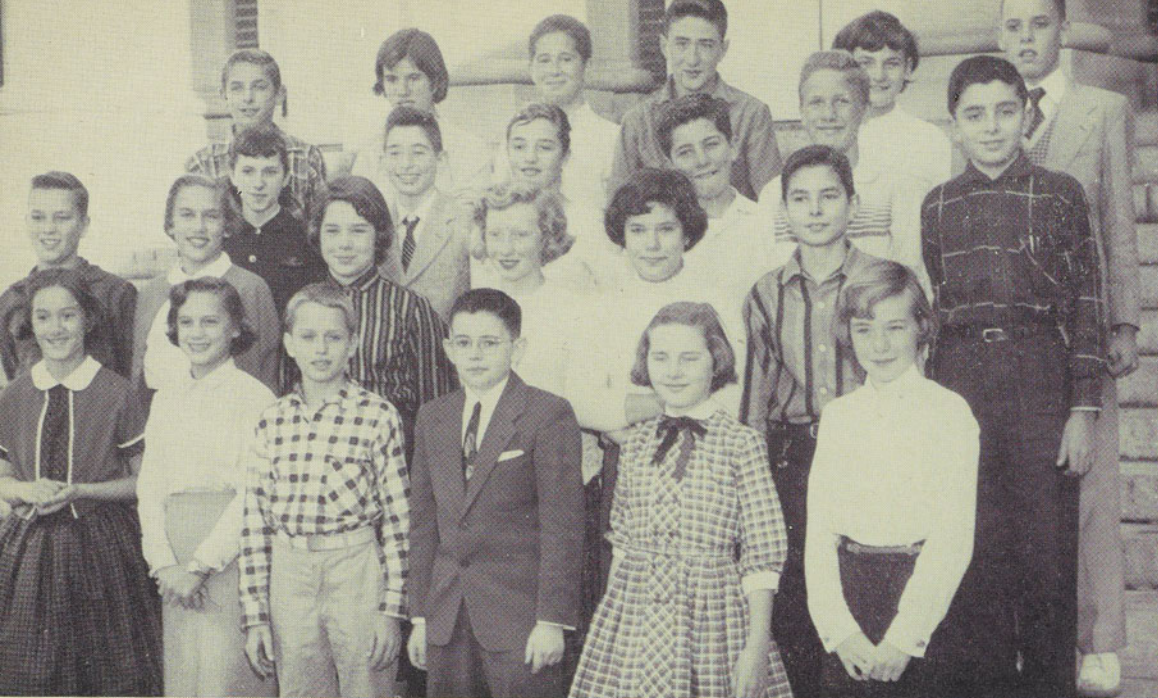


Eighth grade . . . the advent of treacherous high heels . . . the coming of new musical experiences like junior choir . . . strained muscles resulting from cheerleading club and basketball practice . . . dancing, of course . . . loyal attendance at school functions . . . our own team . . . the new sport — preying on seventh graders . . . student council elections . . . we learned how to make campaign promises . . . and speeches . . . were we nervous! . . . soon to be in front row center in the auditorium when our eighth grade year rolls on.

Homeroom 123

First Row: Carol West, Virginia Bullis, Judy Safranko, Anthony Dominski, Rodney Abele. *Second Row:* Joyce Johnson, Janet Mattick, Patricia Kurcell, Arthur Bass, Mark Kupperberg, Richard Striker, Richard Welch. *Third Row:* Barbara Airey, Judith Fisher, Ellen Price, Penelope Traver, Dirck Olton. *Fourth Row:* Barbara Corbat, Ulrica Stewart, Robert Mull, Steven Rice, Steven Cosgrave.





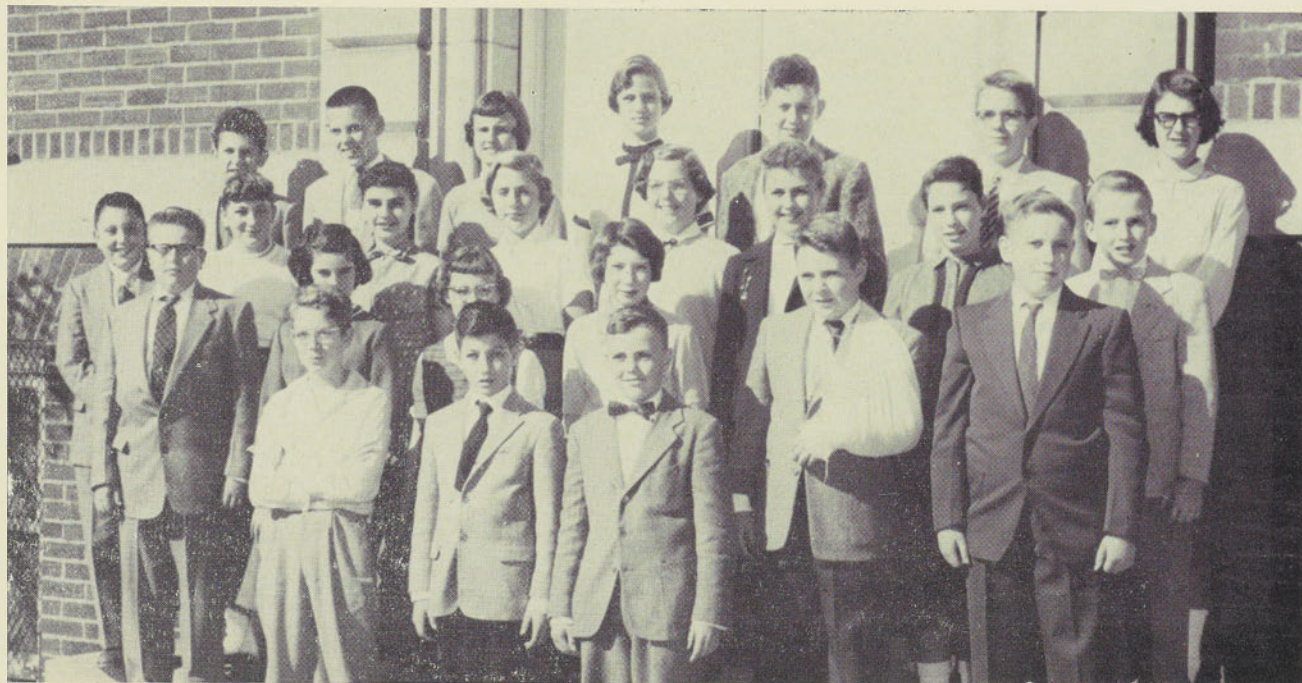
Homeroom

First Row: Sheila Hoff, Suzanne Sutphen, Peter Hitchcock, William Minahan, Elizabeth Vogle, Nancy Daniels. *Second Row:* Robert Parker, Susan Hanke, Kathy Ring, Beth Ann Laraway, Judith Margolis, Clinton Bourdon. *Third Row:* Lynn Wise, Robert Reynolds, Gratia Dexter, Oren Phillips, Robert Jennings, Eric DiSarro. *Fourth Row:* John Coughtry, Cadance King, Jerrey Berman, Michael Daggett, Sandra Scoons, Charles Grogan.

SEVENTH GRADE

Homeroom

First Row: Robert Miller, Raffi Berberian, James Killough. *Second Row:* Glenn Van Acker, Mary Louise Smyth, Carol Tougher, Kristin Korman, Richard Sells, Gordon Campaigne. *Third Row:* Richard Doling, Janice Muers, John Foster, Linda Shincel, Jana Hesser, Carol Ricotta, Ellen Wolkin, Robert Huff. *Fourth Row:* Warren Quinn, Michael Grogan, Patricia Jaros, Mary Lewis, Paul Freedman, Peter Crane, Cynthia Willis.



Class Officers

ELLEN WOLKIN
ROBERT PARKER
PETER HITCHCOCK

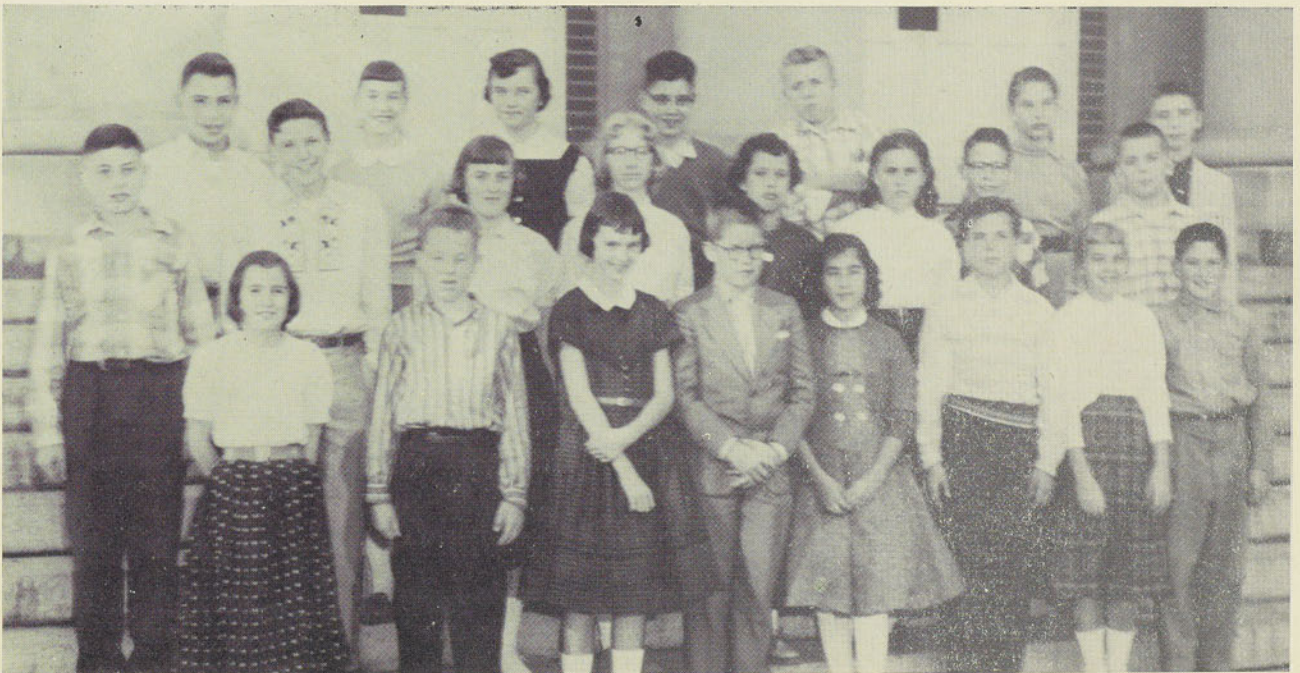
RICHARD SELLS
SUSAN HANKE
ROBERT HUFF



We're here . . . us little seventh graders . . . some not so little . . . just like last year . . . and the year before . . . asking the same questions such as "Where's the gym?" . . . getting the same answers such as "Go to the fourth floor and then turn to your left and go down the back stairs" . . . warned about the elevator tickets . . . poor, picked on seventh graders . . . ha ha . . . we just can't wait until we can be the ones to assist our underclassmen next year . . . we won't do such nasty things, will we?

Homeroom

First Row: Kathleen Jewett, Roger Scymour, Nancy Spear, Robert Henrickson, Karen Unger-
man, Mark Hunt, Valerie Bonczyk, Lewis Morrison. *Second Row:* John Bildersee, Michael
Clenahan, Judith Hewitt, Ruth Scher, Kaye Koschorreck, Alice Wilttrout, Kenneth Reynolds,
Mike Vizis. *Third Row:* Richard Etkin, Lois Goldman, Gail O'Brien, Jerry Gibson, Jim Romer,
Janet Surrey, Larry Morris.

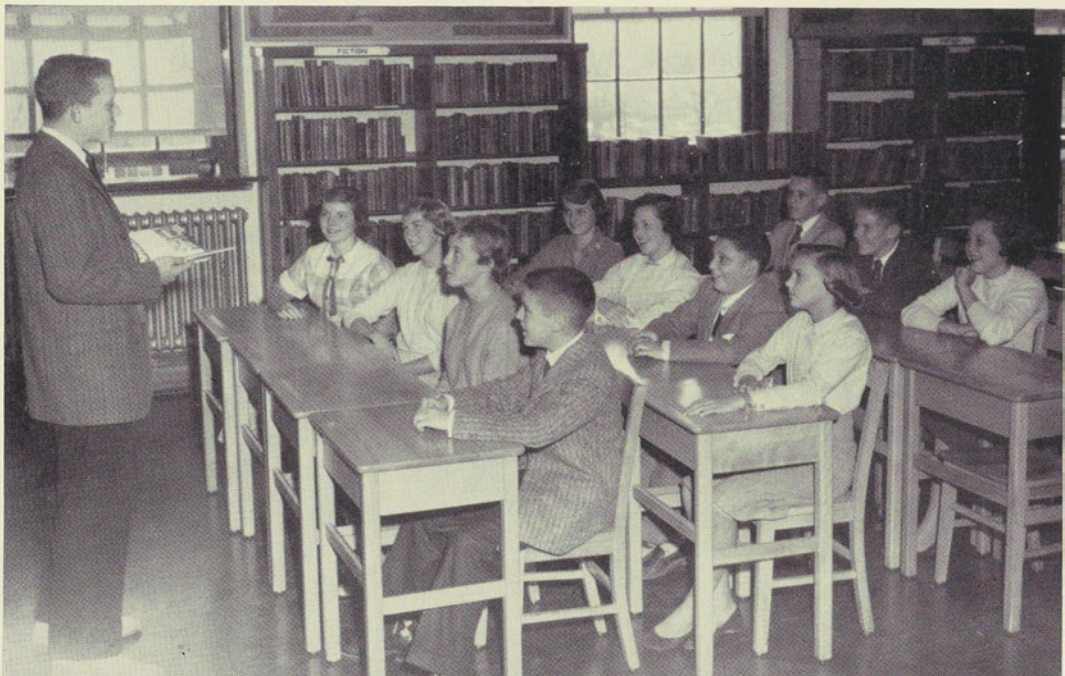


SENIOR STUDENT COUNCIL



First Row: Ellie McNamara, Vice President; Robert Horn, President; Sue Hershey, Secretary; James Cohen, Treasurer. *Second Row:* Fred Taylor, Robert Blabey, Hugh Mehan, Richard McEwan, Lawrence Kupperberg, Robert Killough.

JUNIOR STUDENT COUNCIL



Standing: James Allen, President. *First Row:* Linda Dries, Secretary; Grace Stephens, Treasurer; Judith Allen, Vice President; David Blabey. *Second Row:* Joan Switzer, Carol West, Richard Doling, Susan Sutphen. *Third Row:* Charles Grogan, Steven Rice, Janice Humphrey.

In Memoriam



MRS. MARGARET ARMSTRONG

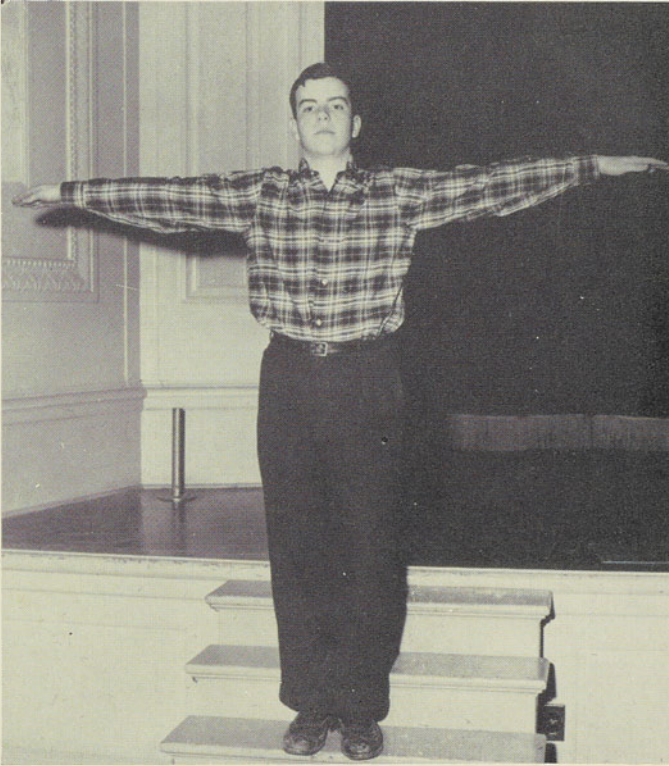
In fond memory of Mrs. Armstrong whose guidance and cheer will always serve to inspire us.





activities

THESEUM



A very efficient organization . . . no dues . . . no meetings . . .
no activities . . . and it looks good on the old H.R. . . . elections with-
out campaigning . . . swift decisions on pressing matters . . . cooperation
among all members . . . join Theseum . . . the organization with some-
thing special!



First Row: Allison Kelley, Sandra Sutphen, Joan Hayworth, Jean Eisenhart, Nancy Einhorn, Cynthia Frommer, Elaine Cohen, Virginia Huntington, Doris Markowitz. *Second Row:* Carol Rathbun, Linda Sherman, Marion Levine, Carolyn Male, Dee Huebner, Karen Dougherty, Joanna Wagner, Margaret Fisher, Annabelle Page, Doreen Goldberg, Nancy Alfred. *Third Row:* James Dougherty, William Englander, John Garman, Irwin Scher, Peter Pappas, William Hoff, Michael Ungerman. *Fourth Row:* Alan Markowitz.

BRICKS AND IVY

September . . . we have organization . . . October . . . easy month . . . November . . . three out of eighteen assignments in . . .
 . . . December . . . B and I pictures . . . hundreds of loyal participants . . . shadows of deadlines . . . January . . . hurry . . . worry . . . "stop screaming" . . . unidentified people . . . "typogripical" errors . . . no sarcasm . . . just a simple book . . . the proof of the book is in the reading . . . poor Mr. Fagan . . . considering the future . . . oh well . . . "carpe diem" . . . our motto . . . the C and W-B and I dance . . . decoration in half an hour . . . keeping secrets sacred . . . everyone surviving thus far . . . where's Ginna? . . . erasable paper . . . a blessing . . . nothing to do but wait until yearbooks are issued . . . gee, we hope we can graduate!



C & W Staff

First Row: Jean Verlaney, Ellen Hoppner, Ellen Sherman, Carolyn Male, Terri Lester, Stephanie Condon. *Second Row:* Bud Mehan, Judy Allen, Ann Wilson, Linda Sherman, Sue Hershey, Robert Snyder, Eugene Blabey, Helen Stycos, Judy Malzberg, James Cohen. *Third Row:* Howard Werner, Gertrude Frey, Jane Armstrong.

CRIMSON AND WHITE

The *Crimson and White* is a paper issued every three weeks . . . Gene's nightmare . . . stretching a point . . . a new skill . . . making news like all the big papers . . . full page editorials, the goal . . . names in the news . . . spelled phonetically . . . shocking headlines . . . large circulation . . . literary talent demonstrated in "Look What's Coming" . . . March and the new staff . . . whew . . . with all our experience, we could produce a wonderful paper next year!





Officers

VIRGINIA HUNTINGTON *President*
 JEAN VERLANEY . *Vice President*
 JANE ARMSTRONG . *Secretary*
 ELLEN HOPPNER . *Treasurer*
 ARLEEN SUSSER
Mistress of Ceremonies

QUINTILLIAN LITERARY SOCIETY

Themes for the rush . . . would it be too hard to use inside a gopher hole?
 . . . angels . . . no . . . Neptune and other underwater creatures . . .
 the underwater paradise in far away Little Gym . . . so much food to dispose of
 . . . soon came the pillow party banquet . . . after new members came money
 for the treasury . . . pins . . . when are those pins coming? . . . if you
 don't have a middle initial, invent one . . . elections . . . the Q.T.S.A. . . .
 June . . . it's never too early to plan a rush, is it, Dr. Wasley?

First Row: Mary Felker, Doris Markowitz, Suzanne Clizbe, Melinda Hitchcock, Virginia Huntington. *Second Row:* Linda Sherman, Betsy Price, Katherine Simmons, Ellen Hoppner. *Third Row:* Stephanie Condon, Arleen Susser, Nancy Starker. *Fourth Row:* Esther Clum, Joyce Eppleman, Sue McNeil. *Fifth Row:* Judy Malzberg, Marion Levine, Patty Averill. *Sixth Row:* Abby Perlman, Charlotte Sackman, Rita Gosnel, Helen Stycos, Sandra Wurst, Moria Hickey. *Seventh Row:* Nancy Einhorn, Adrienne Rosen, Elaine Cohen, Jane Armstrong, Carolyn Stein, Carolyn Male.



Officers

ELEANOR McNAMARA . *President*
 ANNABELLE PAGE . *Vice President*
 MARGY FISHER . . . *Secretary*
 JEAN EISENHART . . . *Treasurer*
 TERRI LESTER
Mistress of Ceremonies



ZETA SIGMA LITERARY SOCIETY

"We're on our way to the stars" . . . our cat led the show . . . story-telling . . . football . . . Paris . . . important parts in our activities . . . the banquet . . . the members sat back and watched . . . no one could move after all that eating . . . waiting for dues, keys, pins . . . special discount rates on early payment . . . soon another banquet . . . we should be renamed "Diner's Club" . . . thanks to Ellie and Dr. Snyder for a very successful year.



First Row: Terri Lester, Rosemary Becker, Lois Grimm, Betty Wassmer. *Second Row:* Karen Olson, Arlene Heinmiller, Carol Bruce, Shirley Myers, Sandra Myers. *Fourth Row:* Ellen Sherman, Eleanor McNamara, Mary Lou Bently, Constance Leu. *Fifth Row:* Cynthia Frommer, Margaret Male, Sue Baldwin, Eileen Hannan. *Sixth Row:* Dale Metzger, Carol Newton, Jean Eisenhart, Suzanne LaPaugh, Sue Hershey, Pat Moore, Carol Becker. *Seventh Row:* Carolyn Lacy, Maria Hartman, Annabel Page, Sue Goldman, Carol Rathbun, Sue DiSarro, Patricia Scoons, Margy Fisher, Kathie Hunter.



Officers

BOB HORN *President*
 WILLIAM ENGLANDER . . . *Vice President*
 JAMES COHEN *Secretary*
 PETER PAPAS *Treasurer*

ADELPHOI LITERARY SOCIETY

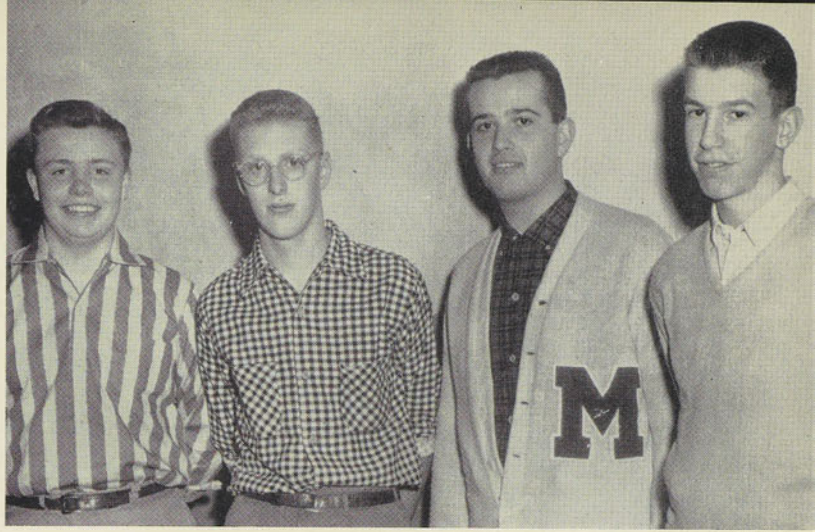
Adelphoi . . . the organization with soda pop blood . . . seen behind
 coke counters at every home game . . . the familiar cry for dues harassed the
 poor treasurer . . . the annual picnic . . . complete with ants and other
 small creatures . . . meetings of speed and action . . . never a dull mo-
 ment . . . constant suggestions . . . participation in the Q.T.S.A. scholar-
 ship and dance . . . new officers . . . ready for a new year!



William Englander, Robert Knouse, Edward Sells, Clayton Knapp, John Fenton, Lawrence Berman, Peter Papas, Daniel Brown, Wesley Jennings, Steve Crane, James Cohen, Lawrence Kupperberg, Thomas Sternfeld, Richard Requa, William Grimm. *Center: William Hoff, Robert Horn.*

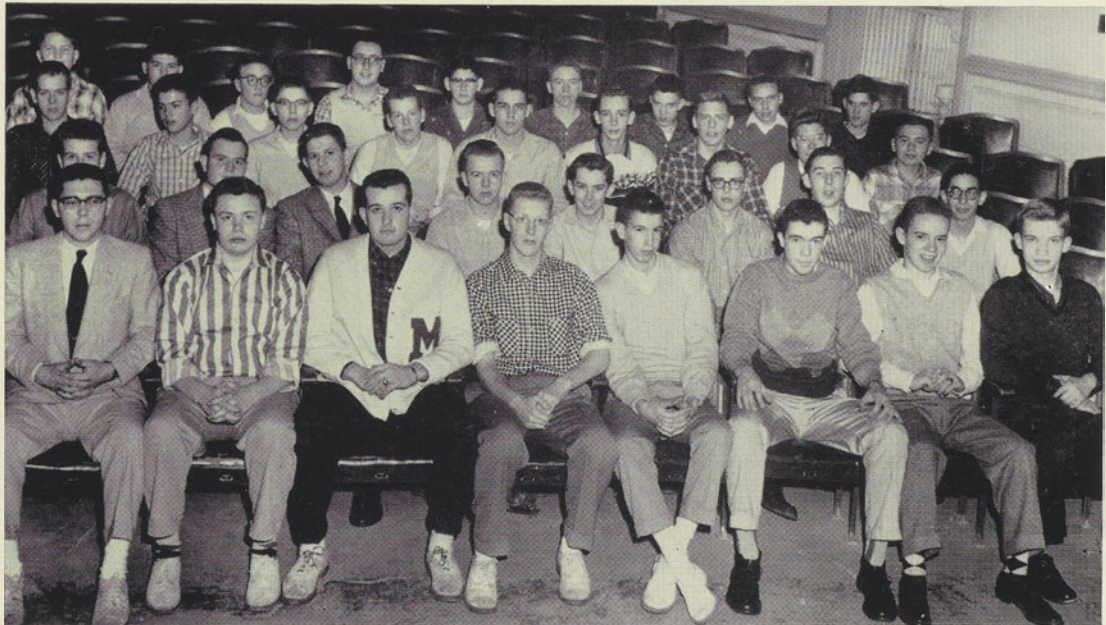
Officers

ALLEN ALPART *President*
 JAMES COHEN *Vice President*
 ROBERT SNYDER *Secretary*
 GEORGE HARTMAN *Treasurer*

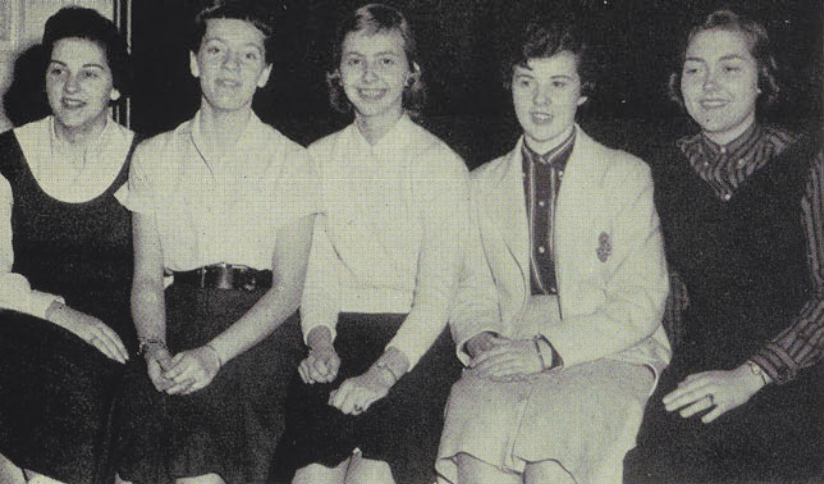


THETA NU LITERARY SOCIETY

What did we do? . . . of course we gave money to the treasurer . . . our delegate to the Q.T.S.A. put in some interesting suggestions . . . President "Al" ruled supremely . . . our picture found everyone present . . . meetings attended . . . projects completed . . . our jackets were ready for spring . . . and we got ready for a new year.



First Row: Louis Hoff, George Hartman, Allen Alpart, James Cohen, Robert Snyder, James Dougherty, John Garman, Anthony Sroka. *Second Row:* Steve Radin, Russell Webber, Victor Hoffman, John Binley, William Reepmeyer, Robert Killough, Robert Kercull, Frederick Bass. *Third Row:* David Donnelly, Wesley Jacobs, Eric Sautter, Richard Lockwood, Donald Lewis, Richard Grear, Harry Grogan, George Houston, Charles Mitchell. *Fourth Row:* Max Streibel, Howard Wildove, Bob Kraft, Robert Bildersee, Bruce Smith, John Fenimore, Mark Parry, William Roth, Charles Averill.



Officers

CAROLYN STEIN	. . .	<i>President</i>
SUE GOLDMAN	. . .	<i>Vice President</i>
CAROL RATHBUN	. . .	<i>Secretary</i>
SANDRA WURST	. . .	<i>Treasurer</i>
CAROL NEWTON	. . .	<i>Chaplain</i>

TRI-HI-Y

All sorts of programs made Tri-Hi-Y interesting . . . swimming . . . scavenger hunts . . . what lists! . . . our new members were very active . . . Miss Glass's guiding hand took us over the bumps . . . delegates to the Bills Convention . . . quite a bit learned from all those meetings . . . allied with our brother organization in many worthwhile, interesting projects, we kept Milne moving.



First Row: Carol Newton, Susan Goldman, Margret Male, Carolyn Stein, Carol Rathbun, Katherine Simmons. *Second Row:* Linda White, Arleen Susser. *Third Row:* Katherine Hunter, Holly Anderson, Elaine Ailt, Julie Florman, Catherine Hall, Eileen Hannan, Sue McNeil, Diana Reed. *Fourth Row:* Annabel Page, Barbara Reynolds, Dale Metzger, Sue DiSarro, Pat Moore, Rita Gosnell, Ann Quickenton. *Fifth Row:* Patricia Scoons, Joyce Selmour, Moira Hickey, Barbara Sager, Marylou Haworth, Abby Perlman. *Sixth Row:* Sandra Wurst, Betsy Price, Esther Clum, Ann Marshall, Maria Hartman, Constance Evans, Joanna Wagoner, Carol Becker. *Seventh Row:* Rosemary Becker, Jean Eisenhart, Nancy Lenard, Karen Dougherty, Mary McNutt, Margy Fisher, Jane Armstrong.

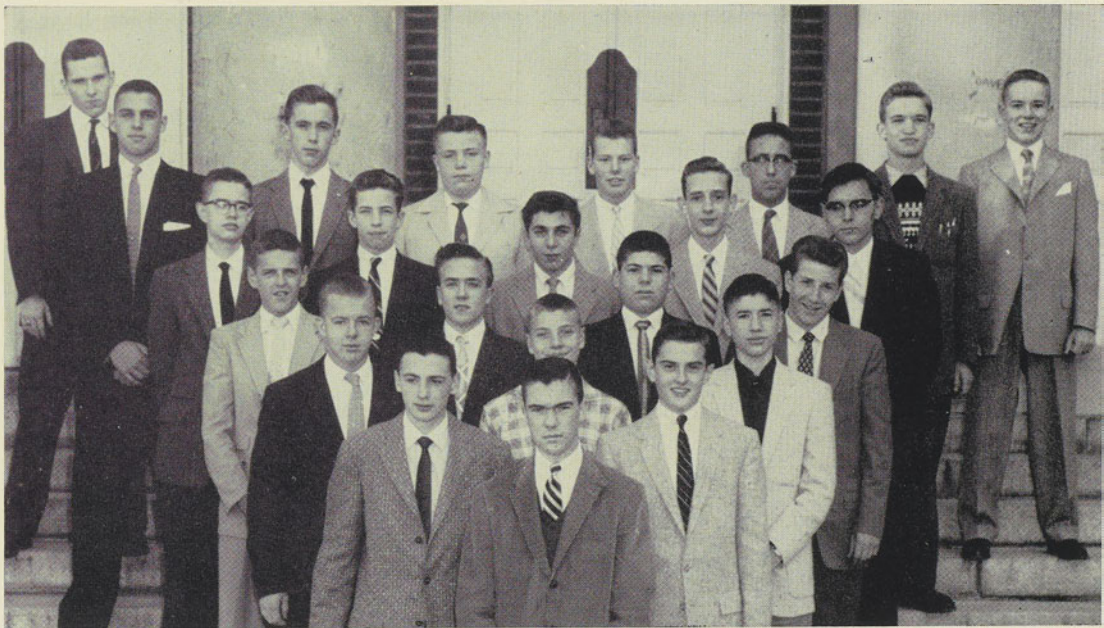
Hi-Y Officers

JAMES DOUGHERTY *President*
 JOHN GARMAN *Vice President*
 WILLIAM ENGLANDER *Secretary*
 DICK MCEWAN *Treasurer*
 GEORGE HARTMAN *Chaplain*
 JOHN BINLEY *Sergeant-at-Arms*



HI-Y

Money-raising activities educational projects and pure enjoyment Bills Convention experience taught us about good government our help went out at Yule time to unfortunate members of the community movies speakers parties socially whirling "Impeach the President!" point of order the bookstore Wednesdays packed with work and people could not be lacking from Milne or the announcement sheets.



First Row: James Dougherty. *Second Row:* William Englander, Dick McEwan. *Third Row:* John Binely, John McIlwaine, Michael Ungerman. *Fourth Row:* Wayne Grant, Robert Kraft, Howard Wildove. *Fifth Row:* Fred Taylor, Bruce Daniels, Serge Douglas, Richard Gear, Igor Magier. *Sixth Row:* Donald Lewis, Richard Collins, George Hartman, Richard Lockwood, Stephen Ten Eyck, Anthony Sroka. *Seventh Row:* Clayton Knapp, John Garman.

MUSIC DEPARTMENT

On key again . . . the new chain of glee clubs . . . where did that Senior Girls' Glee Club spring from? . . . and the band played on . . . Russ, the council prexy . . . music at most assemblies . . . sung through Christmas . . . the Honors Assembly . . . graduation . . . "Be Strong" . . . Milnemen rang out . . . "ah one ah de two ta!" . . . shall the girls wear skirts or dresses? . . . voting . . . let's vote once more . . . don't be late . . . what's your excuse? . . . B.C.H.S. heard us . . . completion of a very busy vocal and instrumental year.



Music Council

First Row: Moria Hickey, Russell Weber, Mary Breeze. *Second Row:* Eileen Hannan, Paula Propp, Dale Metzger, Carol Newton, Betty Wassmer, Irwin Scher, Kathy Scott, Charles Grogan.



Senior Girls' Glee Club

First Row: Virginia Huntington, Melinda Hitchcock, Doris Markowitz, Ellen Sherman, Betty Wassmer, Judith Sibus, Ellen Hoppner, Esther Clum. *Second Row:* Moria Hickey, Constance Leu, Dale Metzger. *Third Row:* Marion Levine, Lois Grimm, Karen Olsen, Suzanne LaPaugh, Carolyn Stein, Carol Newton, Jean Eisenhart, Suzanne Clizbe, Carolyn Lacy, Maria Hartman.

Milnemen

First Row: Lawrence Berman, Robert Horn, James Cohen, Louis Hoff. *Second Row:* Peter Papas, Allen Alpart, Irwin Scher, Victor Hoffman, David Donnelly. *At Piano:* Carol Newton.





Freshman Glee Club

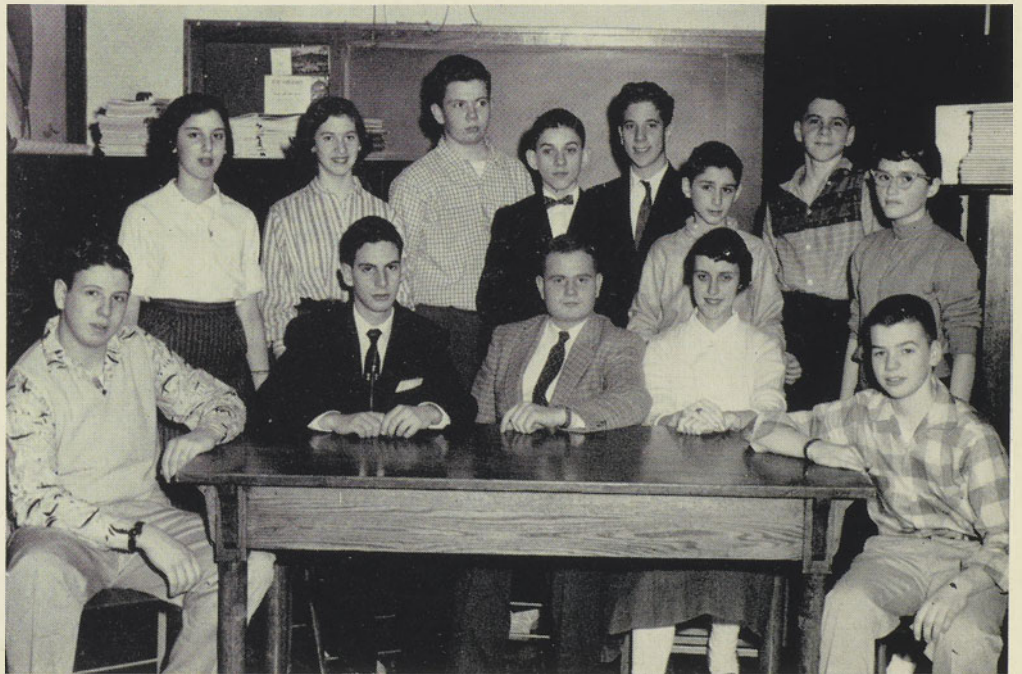
Junior Choir





Sophomore Glee Club

Band



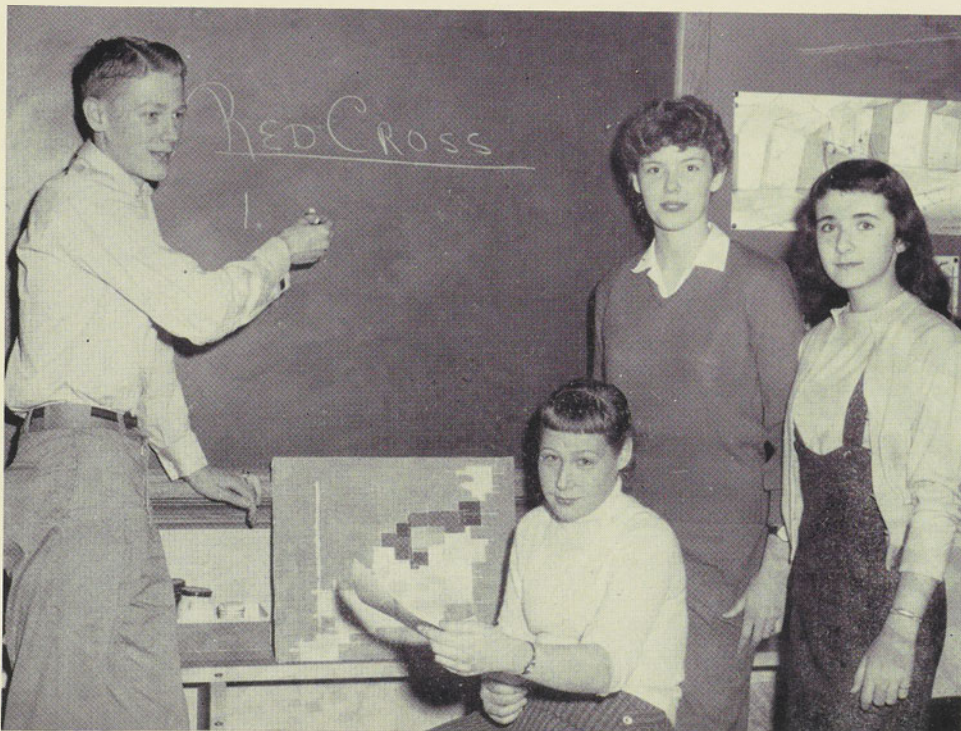


TRAFFIC SQUAD

The bell . . . run . . . hide . . . here comes the mob . . .
 wrong stairway, sir . . . keeping traffic jams at a minimum . . . wrong
 stairway, sir . . . please don't run . . . legal clockwatchers . . . four
 extra minutes per class . . . quite a neat proposition . . . please, sir, this
 is the wrong staircase . . . oh, you're on the squad!

JUNIOR RED CROSS

Did you see our assembly? . . . our work went on for weeks beforehand
 planning for that morning . . . our drive . . . almost complete school
 membership . . . delegates went to the chapter house . . . packing boxes
 . . . making favors . . . our goal—to help the community . . . we
 worked hard for a very worth-while organization.



DEBATE CLUB



Arguing in a gentlemanly fashion . . . slaughter the other man with a clever fact . . . research . . . file cards . . . is this controversial enough? . . . the "pros" and "cons" of "pros" and "cons" . . . speaking cleverly in circles . . . taking the bull by the horns . . . and throwing it . . . educational results . . . on the lookout for arguments . . . watch out!

F. H. A.

Another year with Helen as president . . . we could take it! . . . thirty-six strong membership . . . the rally at Fonda . . . organized a new chapter at B.C.H.S. . . . the snow pins and corsages gave us projects in November . . . the toy drive for the children's centers . . . a doll without a head . . . bunnies without ears . . . the bake sale . . . we bought our mothers' cakes . . . the state convention had our representatives . . . the perfect attendance meeting . . . where's E. S.?





athletics



M.G.A.A.

First Row: Abby Perlman, Carol West, Grace Stephens, Kathleen Hall, Carolyn Lacy. *Second Row:* Annabel Page, Ann Pitkin, Terri Lester, Miss Lydia Murray, Jane Armstrong, Ellen Hoppner, Ann Quickenton.

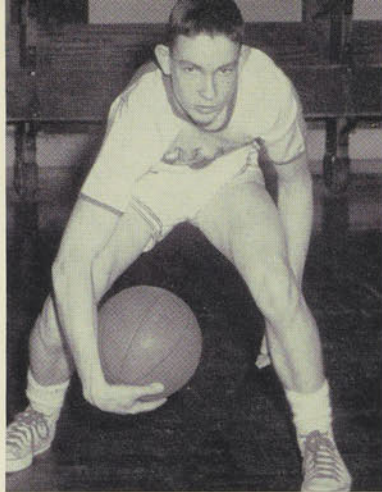
M.B.A.A.

Roger Seymour, Michael Grogan, Charles Grogan, Richard Collins, Robert Snyder, James Lind, Lawrence Kupperberg, David Donnelly, Coach Harry Grogan, Eugene Blabey, Lawrence Berman, Robert Knouse, John Harvey, George Houston, Stuart Horn, Steve Rice, Sanford Berman.





Clayton Knapp 11



Hugh Mehan 77



Peter Pappas 128



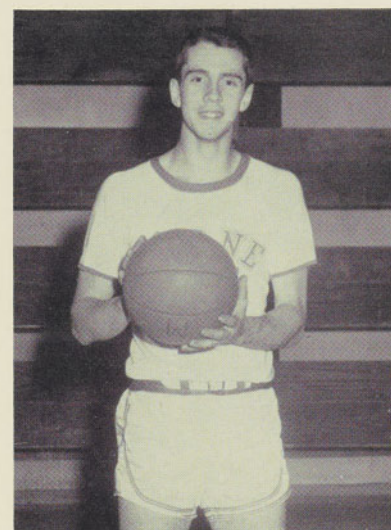
Harry Grogan 75

Basketball Scores

Milne...64	Cobleskill	65	Milne...61	Columbia	63
Milne...78	Columbia	83	Milne...54	Van Rensselaer.....	79
Milne...57	Chatham	62	Milne...59	Albany Academy ...	66
Milne...48	Van Rensselaer	54	Milne...57	Cobleskill	78
Milne...50	Albany Academy.....	53	Milne...59	Chatham	38
Milne...46	B.C.H.S.	65	Milne...51	B.C.H.S.	77
Milne...50	Shenendehowa	45	Milne...74	Shenendehowa	53



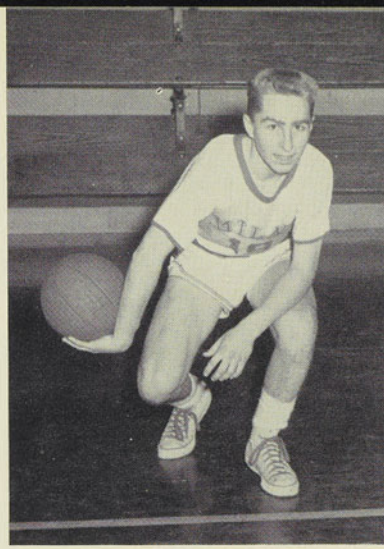
Robert Knouse 12



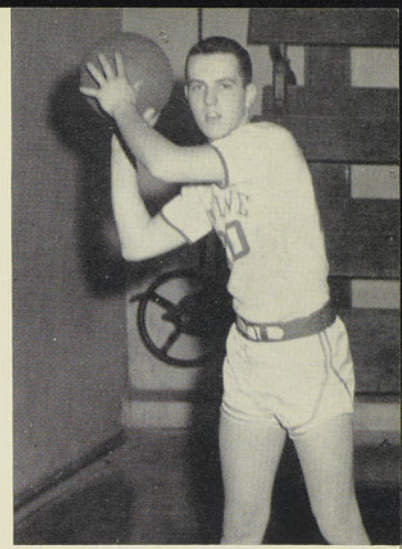
William Hoff 301



James Cohen 63



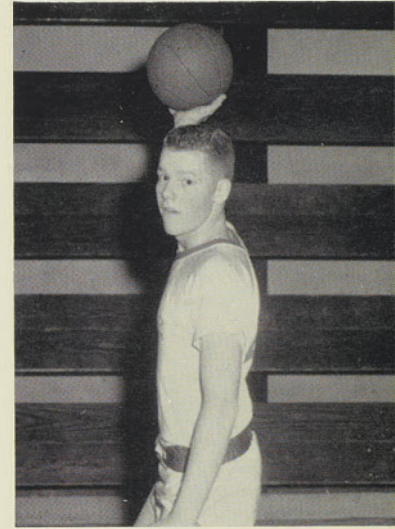
Thomas Sternfeld 26



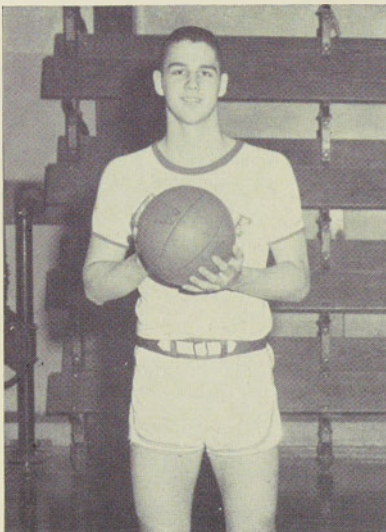
Robert Blabey 28

BASKETBALL

A short season . . . our scorer was above the record . . . 44 points . . . some doing . . . sophs added large share . . . another series of screams . . . and wails . . . beware the burning bus . . . cheerleaders in their red and white sneakers . . . "Team bus leaves at 4:30!" . . . hospitality at the games . . . Shenendehowa . . . those shiny glass backboards . . . Page Gym . . . gigantic . . . pep assembly . . . sports columns never got names straight . . . so who are these "future teachers"?



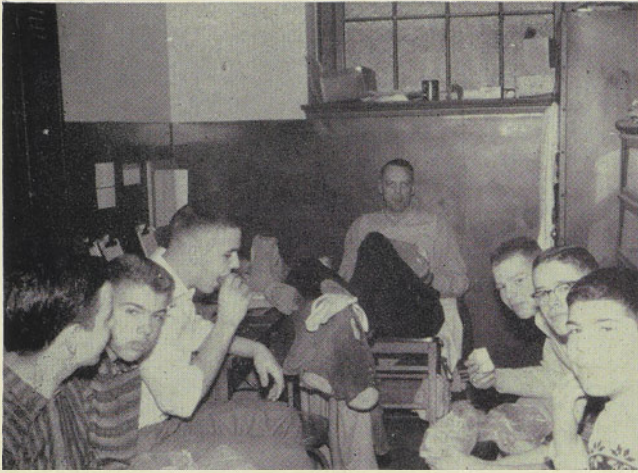
Richard Lockwood 19



Pat Lewis 73



Coach Harry Grogan 0



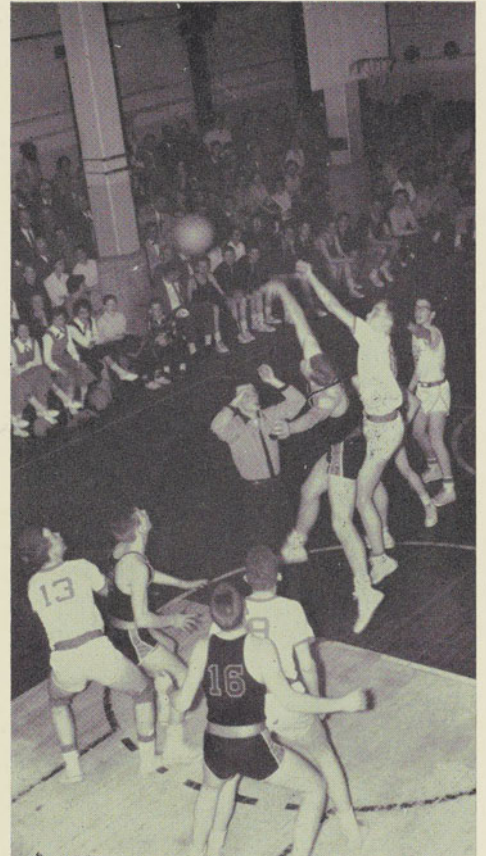
Eating?



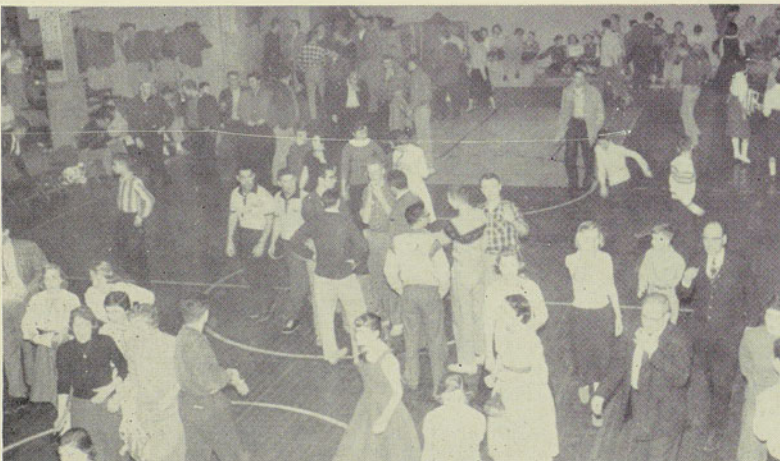
Red Raiders Fi - - -



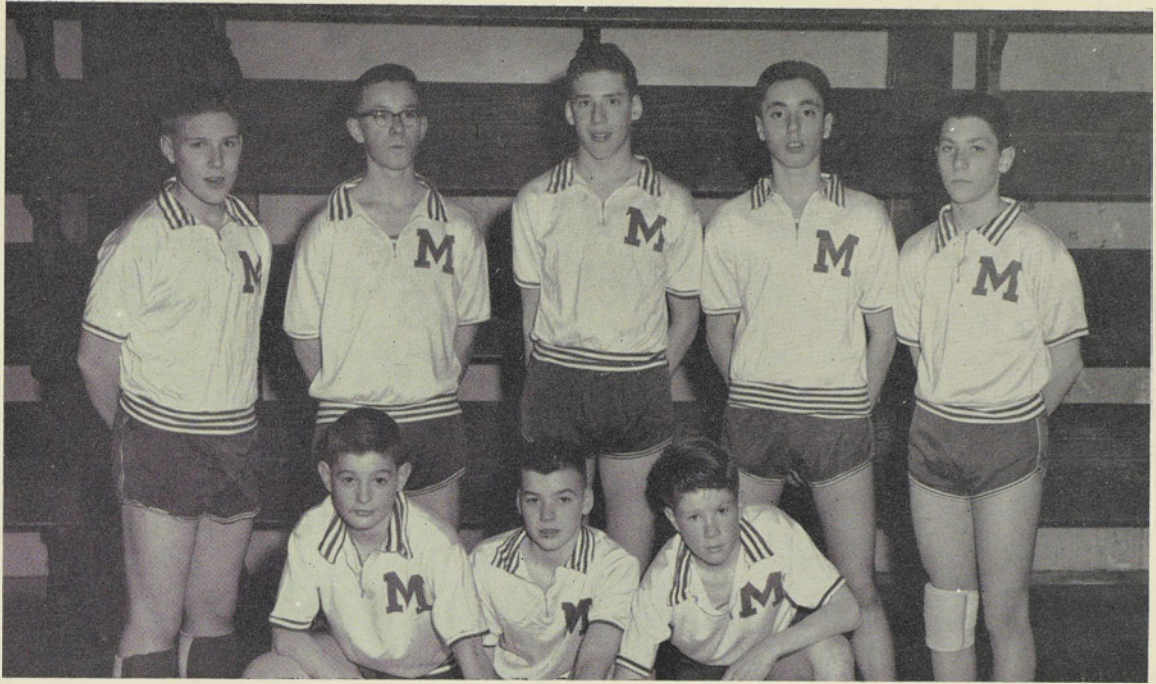
Come on, let's go - - -



Jump low - - -



This is THE CROWD.



Freshmen Basketball Team

First Row: George Jenkins, Kenneth Lockwood, Robert Cantwell. *Second Row:* Steven Rice, Theodore Standing, William Nathan, Howard Berkum.

J.V. Basketball Team

First Row: Lawrence Giventer, David Male, Steven Einhorn, Edward Sells, Charles Lewis. *Second Row:* Coach Dennis Dempster, Fred Taylor, Wesley Jacobs, Henry Hallett, Richard Collins, James Allen, William Warren.





Rah Pitkin



Rah Gosnell



Rah Becker



Rah McNeil



Rah Perlman



Rah Verlaney



Rah Huebner



Rah Sackman



Rah Armstrong



J.V. Cheerleaders

Patricia O'Brien, Judith Allen, Sandra Sutphen, Barbara Lester, Joan Haworth, Grace Stephens, Joan Switzer.



Song Leaders

Virginia Huntington, Terri Lester.



Varsity

Kneeling: Donald Lewis, Alan Alpart, William Hoff. *First Row:* Howard Wildove, Harold Grogen, Robert Hardy, William Warren, Wesley Jacobs, Frederick Taylor, Robert Blabey, Hugh Mehan, Richard Gear, Richard Lockwood, William Englander, Richard Keefer. *Second Row:* Lawrence Berman, Thomas Sternfeld, Edward Sells, Roger Stumpf, Robert Horn, Robert Knouse, Robert Snyder.

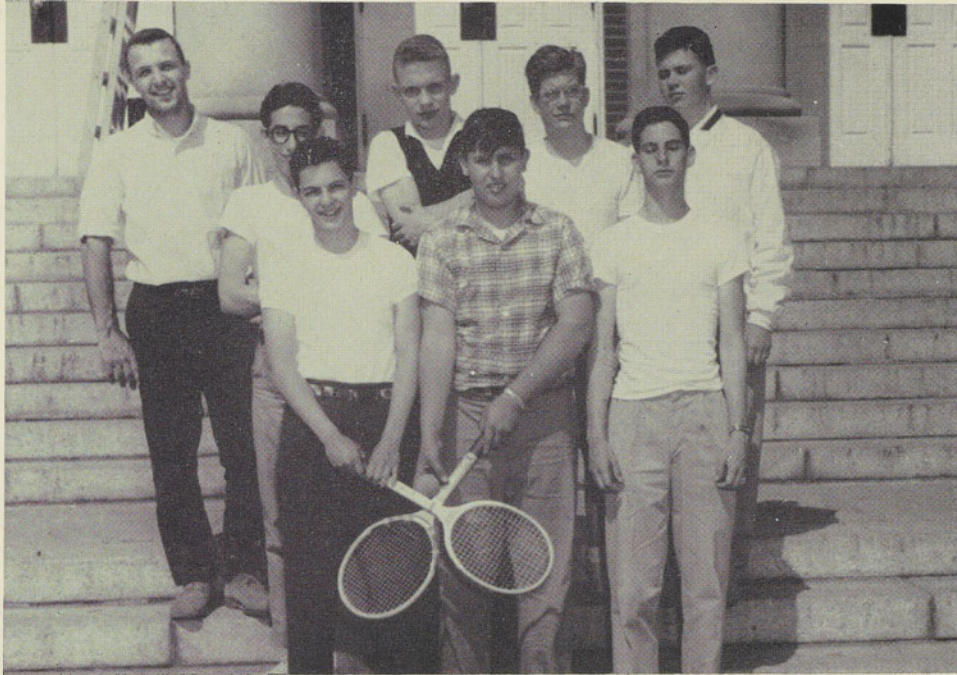
BASEBALL

Our championship trophy to build upon . . . uniforms to be taken in
 . . . pitching arms warmed up . . . Freshman squad . . . J.V.
 . . . Varsity . . . practice every afternoon . . . snow . . . Ridge-
 field welcomed us . . . records to be set . . . sluggers . . . mighty
 runners . . . stars in all ways . . . Don't we just love baseball!

Freshmen

First Row: Stewart Horn, Steven Rice, Theodore Standing, Thomas Rider, Steven Einhorn, Charles Lewis, Henry Hallet. *Second Row:* Kenneth Lockwood, Sanford Berman, George Jenkins, Allen Markowitz, Glenn Simmons, Richard Hutchinson, Robert Cantwell.





Tennis Team

First Row: Aaron Jasper, Johnathan Harvey, Lawrence Geventer. *Second Row:* Peter Pappas, Frederick Bass, Jed Allen, George Houston, Johnathan Breeze.

TENNIS

Washington Park . . . the scene of white-clad tennis . . . Ridgefield
. . . backhands needed refreshing . . . remember to mark your tennis balls
. . . the stimulating walk from school to the courts . . . too tired to play
. . . cultured sport . . . rounding out our sports program.



June

NORTHERN COMMERCIAL BANK

Pay to the order of The Mutual Loan & Savings Society
Kerry

100.00
Your obedient servant

advertising

Compliments of

Gustave Lorey Studio

MILNE HIGH OFFICIAL PHOTOGRAPHER

91 STATE STREET

ALBANY 7, NEW YORK

PRINTING

... of distinction

Your school yearbook will some day
become one of your most cherished possessions.

Each time you thumb its pages memories
will return to give you joy and pleasure. You
will see the faces of old friends and chums . . . of
campus sports and dozens of other pictures
which will recall fond memories.

These mementos should be preserved in an
attractive cover, beautifully printed and bound.
Annuals by Fort Orange Press, possess a certain
beauty and distinction that experience
alone can give.

engravings
printing
binding
covers

FORT ORANGE PRESS

INCORPORATED

School Annual Publications

ALBANY, NEW YORK

Compliments of

Koenigsbauer Jewelers

TROY



Compliments of

**Grimm Building
Material Company**

Compliments of

MILNE HI-Y

Compliments of

Howard G. Breeze

LIFE INSURANCE

30 Lodge Street

Wildove Furniture

251 CENTRAL AVENUE

Compliments of

Quin and Sigma



Congratulations Graduates!

LOOK TO A FUTURE
WITH THE TELEPHONE COMPANY

There is a variety of jobs to choose from with good starting salaries
and regular increases

NEW YORK TELEPHONE COMPANY

158 STATE STREET

ALBANY, NEW YORK



THE COLLEGE OF SAINT ROSE

ALBANY, NEW YORK

Courses lead to B.A., B.S., and
B.S. in Ed. degrees
and prepare for

Teaching — Elementary and Secondary —
Nursing, Medical Technology, Music,
Business, Sociology, the Sciences,
Mathematics, Modern and
Classical Languages,
and Allied Careers.

JOHN B. HAUF, INC.

"The House of Quality"

FINE FURNITURE AND RUGS

175 Central Avenue, Albany, N. Y.

Bangert's Market

423 QUAIL STREET

Detroit Supply Co., Inc.

Automotive - Industrial Distributors

Main Office

ALBANY, NEW YORK

Branches—Troy, Schenectady, Glens Falls,
Amsterdam, Oneonta, Kingston,
Poughkeepsie, Pittsfield, Massachusetts

Penny Wise

Junior Bazaar

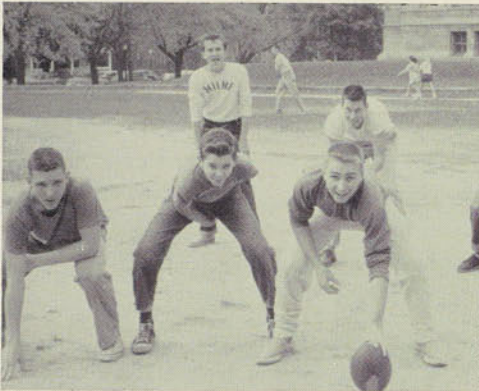
137 CENTRAL AVENUE

Albany Camera Shop, Inc.

FILM AND CAMERAS

Washington Avenue at Lark Street

Phone 5-4558



F. Donald Lewis

SUITE 1300

112 STATE STREET

Albany 5-3531



Albany Merchandising Corp.

195 MORRIS STREET

ALBANY 5-5833



Portable Typewriters

\$2.50 weekly





Compliments of
Gateway, Inc.

Compliments
of
THETA NU

Congratulations and Best Wishes

To the Class of 1957 from

LIVERMORE CHEVROLET



Compliments of

**ALBANY HARDWARE AND
IRON CO.**

39 - 43 STATE STREET

Complete Sports Equipment

Phone 4-3154



"Best of Luck"

Adelphoi



Many high school graduates today find that banking offers interesting, well-paid jobs with pleasant working conditions and opportunity for advancement. If you would like more information, please telephone Miss Mary V. Hennessy, Personnel Director, at Albany 4-4111.

**The National Commercial
Bank and Trust Company
of Albany**

60 State St., Albany, N. Y.

★ *Plus* **SKILLS**



GUIDANCE — balanced training — activities. Placement in key positions in business, professional and government offices.

ALBANY BUSINESS COLLEGE

126-134 Washington Avenue

Albany 6, N. Y.

State Registered — Veteran Approved

Compliments of

F. H. A.

**NORMAN'S KILL FARM
DAIRY COMPANY**

GOLDEN GUERNSEY MILK

VELVET ICE CREAM

120 So. Swan St.

Albany, N. Y.

VENEER WITH NATURAL STONE

**Adam Ross—
Cut Stone Co., Inc.**

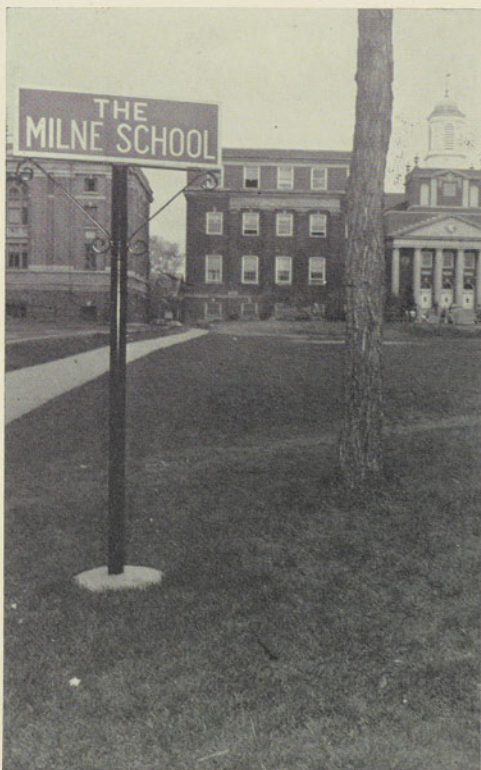
Albany, N. Y.

Dial 3-2622

House of Cards

46 North Pearl Street

Albany, N. Y.



Dancing Every Evening

Herbert's Restaurant

1054 MADISON AVENUE

Phone: 2-2268

Compliments

of

TRI-HI-Y

BOOSTERS

The Bricks and Ivy extends its thanks to the concerns listed below. Their contributions have helped to make the publication of this yearbook possible.

TED'S DELICATESSEN
Crestwood Shopping Center

TROY DRUG STORE
Troy

URANN CADILLAC OLDSMOBILE
140 Second

WALDMAN'S SHOES
94 State

LEW'S BAKERY
Troy

J. KENNEDY

KENNEDY GARAGE
Jefferson and Third St., Troy

SPECTOR'S MEN'S SHOP
233 Central Ave.

MRS. BEN UNGERMAN

ANN PETERSEN'S BEAUTY SALON
1060 Madison Ave.

A FRIEND

A FRIEND

