

Civil Service LEADER

America's Largest Weekly for Public Employees

Vol. XV — No. 48 Tuesday, August 10, 1954 Price Ten Cents

TB, Armory, Other State Pay Set

See Page 7

All Converted State Salaries Listed at Old and New Pay

Employees in title that carries a specialty in parenthesis will be paid the same rate as those in the general title without the parenthetical specialty, except that pay for titles in the TB specialties is being set separately, and a decision as to such pay will be announced later. For money values, see tables, Pages 8 and 9.

SALARY AND TITLE DETERMINATIONS

The Director of Classification and Compensation and the Director of the Budget have determined that, pursuant to the provisions of Chapter 307 of the Laws of 1954, the reallocations listed in this report will be made on October 1.

This report has been issued in advance of October 1 for the sole purpose of permitting departments and agencies to make an early start on the revision of payroll records.

Part I contains an alphabetic list of all titles which are to be reallocated (or allocated) to grades in the new salary plan.

Part II contains an alphabetic list of present titles which are to be eliminated by reclassification, or which for other reasons are not to be allocated.

General Directions for Use of This Report

1. Except as specifically listed for tuberculosis titles in Part I, all parenthetical titles are to be allocated to the grade that is shown for the base title without a parenthetical. Allocations for titles with tuberculosis service parenthetics will be announced at a later date.

2. This report lists the statutory ranges for each grade, and does not indicate proposed temporary increases in minimum salaries. Announcement of titles for which recruitment above the minimum is to be authorized will appear at a later date.

3. This report will be supplemented by separate notices of classification determinations for each department and agency to correct individual classification inequities.

4. Form CC-54, available through department and agency personnel offices, may be used to request review of the salary gradings announced in this report. The form contains detailed instructions, which should be followed with care. In cases where several employees under the same title request a review of the allocation of their title to a salary grade, only one form for the entire group need be filled out and filed.

5. Dollar ranges for new grades, as shown in this report, do not include the extra step rate which will be paid to employees who have served at the maximum of their grades for five years or more as defined by the statute.

PART I. TITLES TO BE USED IN THE NEW SALARY PLAN.

Title, old salary grade and new salary grade are given, in that order.

* Indicates new title.

† Payroll records should not be changed pending reclassification which will affect these titles.

Account Clerk, 2, 3.
Actuarial Clerk, 2, 3.
Administrative Aide, 9, 10.
Administrative Assistant, 20, 18.
Administrative Director of Audits and Accounts, 50, 38.
Administrative Director of Civil Service, 50, 38.
Administrative Director of Commerce, 39, 30.
Administrative Director of Employees Retirement System, 43, 32.
Administrative Director, Hospital Planning Commission, 50, 38.
Administrative Director of Labor, 39, 30.
Administrative Director of

Standards and Purchase, 32, 28.
Administrative Employment Supervisor, 20, 16.
Administrative Finance Officer, 32, 27.
*Administrative Officer, Audit and Control, 25, 23.
*Administrative Officer, Commerce, 25, 23.
Administrative Officer, Division of Employment, 35, 29.
Administrative Officer, Division of Parole, 28, 23.
*Administrative Officer, Rent Commission, 28, 25.
Administrative Supervisor of Audit and Control Records, 25, 22.
Administrative Supervisor of Corporation Tax Records, 25, 22.
Administrative Supervisor of Income Tax Collection, 25, 22.
Administrative Supervisor of Machine Accounting, 25, 23.
Administrative Supervisor of Title Abstracts, 32, 26.
Administrator of Apprentice Training, 32, 26.
Administrator of Oral Hygiene, 37, 31.
Agricultural Fairs Representative, 25, 18.
Air Conditioning Plant Operator, 11, 11.
Airplane Pilot, 24, 21.
Analytical Chemist, 14, 14.
Animal Industry Aide, 7, 8.
Apiculturist, 21, 19.
Apprentice Training Representative, 20, 16.
Aquatic Biologist, 14, 14.
Architectural Renderer, 32, 27.
Area Veteran Director, 32, 24.
Artist-Designer, 14, 13.
Asbestos Worker, 8, 8.
Assembly Hall Custodian, 4, 5.
Assistant Accountant, 14, 14.
Assistant Actuary, 17, 14.
Assistant Administrative Director of Civil Service, 39, 31.
Assistant Administrative Finance Officer, 25, 22.
Assistant Administrative Officer, Division of Employment, 28, 23.
Assistant Administrative Supervisor of Machine Accounting, 20, 18.
Assistant Administrator of Compensation Claims, 27, 23.
Assistant in Adult Civic Education, 20, 19.
Assistant in Americanization and Adult Elementary Education, 20, 19.
Assistant in Adult Education, 20, 19.
Assistant in Agricultural Education, 20, 19.
Assistant Architect, 20, 19.
Assistant Architectural Estimator, 20, 19.
Assistant Architectural Specifications Writer, 20, 19.
Assistant Attorney General, 39, 31.
*Assistant in Audio-Visual Education, 25, 19.
Assistant Auditor, 14, 14.
Assistant Automotive Maintenance Inspector, 8, 9.
Assistant Baker, 3, 4.
Assistant Building Electrical Engineer, 20, 19.
Assistant Building Structural Engineer, 20, 19.
Assistant in Business Education, 20, 19.
Assistant Cancer Research Scientist, 14, 14.
Assistant Chief Auditor of State Refunds, 31, 25.
Assistant in Child Development, 20, 19.
Assistant in Citizenship Education, 20, 19.
Assistant Civil Engineer, 20, 19.
Assistant Colony Supervisor, 4, 5.
Assistant Commissioner for Local Health-Services, 50, 38.
Assistant Commissioner for Medical Services, 50, 38.
Assistant Commissioner of Mental Hygiene, 50, 38.
Assistant Commissioner for Tuberculosis Control, 50, 38.
Assistant Compensation Claims Auditor, 14, 14.
Assistant Compensation Claims Examiner, 12, 12.
Assistant Cook, 2, 4.

Assistant Cooperative Industrial Education, 20, 19.
Assistant Coordinator of Community Mental Health Services, 23, 20.
Assistant Core Drill Operator, 5, 6.
Assistant Counsel, 25, 23.
Assistant in Dental Hygiene Education, 20, 19.
Assistant Director of Accounts and Finance, 34, 28.
Assistant Director, Antitoxin, Serum and Vaccine Laboratories, 40, 32.
Assistant Director of Business Management and Personnel, 32, 27.
Assistant Director of Cancer Institute, 46, 35.
Assistant Director of Classification and Compensation, 35, 31.
Assistant Director for Clinical Research, 40, 32.
Assistant Director of Collection, 28, 24.
Assistant Director of Compensation Claims, 34, 28.
Assistant Director of Correction Reception Center, 32, 27.
Assistant Director of Craig Colony, 40, 32.
Assistant Director of Criminal Hospital, 40, 32.
Assistant Director of Criminal Identification, 25, 22.
Assistant Director — Diagnostic Laboratories, 40, 32.
Assistant Director, Division of Industrial Relations, Women in Industry and Minimum Wage, 32, 27.
Assistant Director of Employment Security Finance, 30, 26.
Assistant Director of Equalization, 34, 27.
Assistant Director of Field Audit, 31, 27.
Assistant Director of Fish and Game, 32, 27.
Assistant Director of Food Control, 25, 22.
Assistant Director of General Accounts, 31, 27.
Assistant Director, General Education, 25, 23.
Assistant Director of Health Department Accounts, 32, 27.
Assistant Director for Hospital Construction, 28, 24.
Assistant Director for Hospital Planning, 28, 24.
Assistant Director of Housing Project Development, 35, 29.
Assistant Director of Industrial Safety Service, 32, 27.
Assistant Director of Labor Research and Statistics, 32, 27.
Assistant Director, Laboratories for Sanitary and Analytical Chemistry, 37, 30.
Assistant Director, Laboratories for Virology, 40, 32.
Assistant Director of Lands and Forests, 32, 27.
Assistant Director of Licenses, 25, 22.
Assistant Director for Local Laboratories, 40, 32.
Assistant Director of Markets, 25, 22.
Assistant Director — Mental Health Commission, 39, 28.
Assistant Director of Mental Hospital, 40, 32.
Assistant Director of Mental Hygiene Business Administration, 32, 30.
Assistant Director of Mental Hygiene Nursing Service, 25, 23.
Assistant Director of Milk Control, 28, 24.
Assistant Director of Miscellaneous Taxes, 34, 28.
Assistant Director of Nursing, 14, 14.
Assistant Director of Payroll Audits, 31, 26.
Assistant Director of Personnel and Office Administration, 25, 23.
Assistant Director of Plant Industry, 20, 15.
Assistant Director of Prison Industries, 32, 27.
Assistant Director of Psychiatric Institute, 46, 35.
Assistant Director of Psychiatric Social Work, 25, 23.
Assistant Director of Psychological Services, 25, 22.
Assistant Director of Public Health Nursing, 25, 23.

Assistant Director of Public Relations, Education and Research, 32, 25.
Assistant Director of Safety Service, 31, 26.
Assistant Director, of Sanitary Engineering, 39, 31.
Assistant Director Services for the Blind, 25, 23.
Assistant Director of State Museum, 30, 27.
Assistant Director of State Parks, 39, 32.
Assistant Director of State School, 40, 32.
Assistant Director of State Traffic Commission, 28, 25.
Assistant Director of Truck Mileage Tax, 31, 26.
Assistant Director of Tuberculosis Hospital, 40, 32.
Assistant Director of Unemployment Insurance, 39, 31.
Assistant Director of Vital Statistics, 28, 23.
Assistant Director, Vocational Education, 25, 23.
Assistant Director of Vocational Rehabilitation, 28, 24.
Assistant Director of Welfare Area Office, 23, 21.
Assistant District Engineer, 39, 32.
Assistant District Game Protector, 11, 11.
Assistant District Health Officer, 28, 25.
Assistant District Supervising Public Health Nurse, 14, 14.
Assistant District Tax Supervisor, 28, 24.
Assistant District Tax Supervisor and Deputy Appraiser, 31, 26.
Assistant Drill Rig Operator, 5, 6.
Assistant in Education for the Aged, 20, 19.
Assistant in Education Guidance, 20, 19.
Assistant in Education of Handicapped, 20, 19.
Assistant in Education of Physically Handicapped, 20, 19.
Assistant in Education Research, 20, 19.
Assistant in Educational Plant Planning, 20, 19.
Assistant Electric Engineer, 20, 19.
Assistant in Elementary Curriculum, 20, 19.
Assistant Employment Security Manager, 17, 17.
Assistant Employment Security Superintendent, 26, 23.
Assistant in English Education, 20, 19.
Assistant Estate Tax Director, 34, 28.
Assistant Examinations Editor, 12, 12.
Assistant Examiner of Methods and Procedures, 15, 14.
*Assistant Executive Officer, 14, 9.
Assistant in Foreign Languages Education, 20, 19.
Assistant Forest Surveyor, 7, 10.
Assistant Game Farm Foreman, 5, 6.
Assistant Game Research Investigator, 11, 11.
Assistant Gas Engineer, 20, 19.
Assistant General Counsel, 30, 25.
*Assistant General Manager of Niagara Frontier Parks, 32, 24.
*Assistant Hardware Specifications Writer, 25, 19.
Assistant in Hearing Conservation, 20, 19.
Assistant Heating and Ventilating Engineer, 20, 19.
Assistant Income Tax Director, 34, 28; applies only to present Assistant Income Tax Director (Administration) G-34. For present Assistant Income Tax Director (Revenues and Accounts), G-31, refer to new title of Income Tax Accounts Supervisor at R-26.
Assistant in Industrial Arts Education, 20, 19.
Assistant Industrial Commissioner, 34, 27.
Assistant in Industrial Education, 20, 19.
Assistant Industrial Foreman, 6, 10.

Assistant Industrial Superintendent, 24, 21.
Assistant in Higher Education, 20, 19.
Assistant in Home Economics Education, 20, 19.
Assistant Housemother, 2, 3.
Assistant Hydraulic Engineer, 20, 19.
Assistant Insurance Sales Director, 31, 26.
Assistant Land and Claims Adjuster, 22, 19.
Assistant Librarian, 14, 14.
Assistant License Enforcement Officer, 23, 20.
Assistant Locomotive Inspector, 9, 9.
Assistant Managing Editor, Industrial Bulletin, 22, 18.
Assistant Manhattan District Supervisor, 28, 29.
Assistant Maritime College Business Officer, 25, 22.
Assistant in Mathematics Education, 20, 19.
Assistant Meat Cutter, 4, 4.
Assistant Mechanical Construction Engineer, 20, 19.
Assistant Mechanical Estimator, 20, 19.
Assistant Mechanical Specifications Writer, 20, 19.
Assistant Metropolitan Estate Tax Supervisor and Appraiser, 31, 26.
Assistant Motor Equipment Maintenance Supervisor, 14, 14.
Assistant in Nursing Education, 20, 19.
Assistant Park Maintenance Supervisor, 17, 14.
Assistant in Physical Education and Recreation, 20, 19.
Assistant Plumbing Engineer, 20, 19.
Assistant Principal Keeper, 25, 22.
Assistant Principal, School of Nursing, 14, 14.
Assistant Property Manager, 16, 15.
*Assistant in Private Trade School Administration, 25, 19.
Assistant Public Works Safety Director, 20, 16.
Assistant Purchasing Agent, 14, 13.
Assistant Railroad Engineer, 20, 19.
Assistant Rates Examiner, 12, 12.
Assistant Realty Consultant, 25, 22.
Assistant Recreation Instructor, 5, 6.
†Assistant Research Scientist, 14, 14.
Assistant Sales Manager, 18, 16.
Assistant Sanitary Engineer, 20, 19.
Assistant in School Attendance, 20, 19.
Assistant in School Business Management, 20, 19.
Assistant in School Financial Aid, 20, 19.
Assistant in School Health Education, 20, 19.
Assistant in School Library Service, 20, 19.
Assistant in School Lunch Administration, 20, 19.
Assistant in School Nursing, 20, 19.
Assistant in Science Education, 20, 19.
Assistant in Secondary Curriculum, 20, 19.
Assistant Secretary of Commission of Correction, 25, 21.
Assistant Self-Insurance Examiner, 12, 12.
(Continued on Page 3)

STATE PAY COMMENT BY KELLY AND POWERS APPEARS NEXT WEEK

The LEADER will publish next week an evaluation of the new State salary allocation. J. Earl Kelly will contribute a comparative analysis, and John P. Powers, CSEA president, will state the Association's reactions. The two experts will compare the result with the understanding reached by Mr. Kelly and the Association in the beginning.

Looking Inside

By H. J. BERNARD

THE 472 REMAINING ELIGIBLES on the NYC patrolman (P.D.) list were heartened at Mayor Wagner's promise to increase the number of patrolmen. The budget calls for 1,724 more than last year, but the Mayor was referring to increasing the increase. The police budget quota is 20,878 for 1954-55.

The patrolman physical test will wind up early next month, and not too long thereafter, 4,000 or so new police eligibles will be anxious for patrolman jobs at what should then be higher pay than at present. These candidates, like the present eligibles, have a deep personal interest in all Police Commissioner Francis W. H. Adams is doing to get more men and higher pay. Not only will the police benefit, but other City employees, because of his courageous and unique example. He took just the step needed to bring the whole pay predicament not only into focus but into the public eye. If he does not watch out, he may go places, for a Commissioner who resorts to such a brave and unusual course is out of this world. And to get the Mayor to back him up, and so quickly, was a phenomenon in NYC history.

"7,000 More Police Needed"

Commissioner Adams says the City needs 7,000 more police, to cope with crime and juvenile delinquency. His dramatic emphasis of the necessity received nationwide publicity. How near he will come to attaining 7,000, or 5,300 above the budget quota, nobody could say. The Mayor is giving Budget Director Abraham D. Beame a real task in trying to find out the limit that the City treasury is able to stand. Everybody knows the City is having a tough time financially, and the Mayor has an advisory committee trying to discover ways of saving money, realizing a greater income by using up-to-date business methods, and even finding new sources of revenue.

Unpleasant but Unavoidable Task

The new sources of revenue must be new taxes and increased tax rates, to provide adequate amounts. This fact seems dynamite-laden, because every new tax, on top of present high taxes, raises a fury of protest. Even a Mayor is entitled to a little peace of mind. But in seeking election as Mayor, a candidate—if he doesn't know it then, finds it out later, if elected—surrenders peace of mind in exchange for the honors, emoluments and political asset of being NYC's Mayor.

The City must sooner or later face the fact it can not continue to underpay so many of its employees, and still have departments that function properly. Commissioner Adams admits that his department is below par because of manpower shortage; Commissioner Edward F. Cavanagh Jr., the Fire Commissioner, is yet to be heard from in such pointed terms, but has at least hinted as much concerning his own department, in deploring the device of having firemen act as lieutenants, lieutenants as captains, captains as battalion chiefs, and battalion chiefs as deputy chiefs, all for long periods, and all at the pay of the lower rank. The Appellate Division has just upheld battalion chiefs who, with the moral support of the Uniformed Fire Officers Association, sued to compel abandonment of the use of "acting" titles.

The Fate of the Faultless

NOBODY CAN ENVY Mayor Wagner's predicament. The large demand for, and short supply of funds are not of his own making. He has had control over only one single annual City budget. It is not his fault but his fate. It is he who must lead the fight for increased City income from sources that can and must supply it, not only so that City employees can be paid decent salaries, but so the City can provide adequately for future growth, as well as present needs, in capital construction and repair, which have been neglected for years. It must not be expected increased State aid will ever cope with such an enormous need.

This is a back-breaking undertaking, and one that requires more courage than some politicians possess. So far, as Mayor, Mr. Wagner, without being brash or offensive, for he is a courtly fellow, has shown courage, though less than a tithe of what will be required to rescue NYC from the effect of years of indifference to salaries and capital construction.

No Easy Out

THE MAYOR, and his committee, will find that the enormous additional amounts of money required can come from no easy sources. It was nice of Judge Samuel S. Leibowitz to tell the Kings County Grand Jury the City must pay its police more, and that the City should pay for police uniforms and ammunition, instead of the men having to foot the bill, but his suggestion that every time 35 cents is paid as Brooklyn-Battery Tunnel toll, 10 of them should "be taken by the City and used to raise the pay of our City employees," is not as practical as the ideas that usually flow from the personable Judge. The City does not own the toll money. The Triborough Bridge and Tunnel Authority does. The Judge as a respecter of property rights, private and public, can not gloss over the distinction. Any solution, even an incomplete one, will be far more difficult than he suggests, and far more irritating than any one could enjoy imagining.

While the police force is not the whole City employee roster, the Police Commissioner has done not only the men of his uniformed force a splendid turn, but also present and prospective police eligibles, and all City employees.

Scene Painted on a Larger Canvas

THE DRAMATIZATION of the pay plight of City employees generally was not intentional on Mr. Adams' part, but inevitable, since the principle is the same citywide. His stand lifts the pay necessity far and beyond anything that mere classification can accomplish. With only a token of \$9,000,000 to rectify presently at 40 per cent such inequities as may be found among 80,000 employees, exclusive of police and fire uniformed forces and others, the remaining 60 per cent benefit is put off until July 1, 1955, without any assurance there will be even enough money then to provide it.

State Eligibles

STATE Open-Competitive

HOME ECONOMIST
1. Conson, Dorothy, Delmar ... 85800
2. Cook, Alma, Hudson Pk ... 78780
3. Depereira, L. Bilyn ... 74880

SUPERVISOR OF EDUCATION FOR THE MENTALLY HANDICAPPED
1. McAllister, C. W. Hempstead ... 70290

STATE Promotion

ASSOCIATE REHABILITATION COUNSELOR,
(Prom.), Education Department (Exclusive of Schools and the State University)
1. Warren, Sol, Bilyn ... 91170
2. McGregor, Donald, Binghamton 88680
3. Muelke, Herman, Schtily ... 88430
4. Martin, Marion, Albertson ... 87760
5. Sater, Nathan, Bronx ... 86080
6. Cardarelli, Angelo, Elmira ... 85960
7. Puff, Stephen, Pkopsite ... 85600
8. Dicker, Helen, Bklyn ... 84700
9. Spinelli, William, Hempstead ... 84440
10. Laurin, Emile, Malbone ... 79200

BUSINESS OFFICER
(Prom.), Department of Correction.
1. Joyce, Roland, Katonah ... 90500
2. Noel, Millard, W Coxsack ... 89550
3. Cooper, Merle, Dannemora ... 83800
4. Petersen, Fred, Sternville ... 83000

PRINCIPAL CLERK (FINGERPRINTING)
(Prom.), Main Office, Department of Correction.
1. Kouters, Catherine, Troy ... 84680
2. Fleming, Margaret, Troy ... 84080
3. Fontana, Helen, Albany ... 81550

ADMINISTRATIVE SUPERVISOR OF CORPORATION TAX RECORDS,
(Prom.), Department of Taxation and Finance.
1. Donnelly, James, Albany ... 86230
2. Kelly, Elizabeth, Albany ... 84430

COUNTY AND VILLAGE Open-Competitive

JANTON,
Town Hall, Town of Long Lake, Hamilton County.
1. Helms, William, Long Lake ... 97000
2. Mash, John, Long Lake ... 86000

FIREMAN,
Town of Harrison, Westchester County.
1. Marone, John, Harrison ... 84200
2. Morone, James, Harrison ... 78800

FIREMAN,
Village of Fort Chester, Westchester County.
1. Rosell, Clayton, Fort Chester ... 88800
2. Keller, Stanley, Fort Chester ... 84350

ELEVATOR OPERATOR,
Westchester County.
1. Wallace, Cornelius, White Pine 90000
2. Coleman, Lewis, Mt Vernon ... 82000

Law Cases

Sidney M. Stern, chairman of the committee on laws and rules, submitted the following report on law cases to the NYC Civil Service Commission:

JUDICIAL DECISIONS:
Special Term:

Murphy v. Brennan, Judge Thomas J. Brady held that dismissal from position of patrolman for medical reasons was not arbitrary. Motion denied. (NYLJ 7-11-54).

O'Connor v. Brennan, Judge Brady ruled fact that petitioner was No. 9 on list and was passed over and No. 10 appointed does not establish that Transit Authority's action was illegal and capricious, as mere fact that petitioner preceded No. 10 on list does not entitle petitioner to appointment. (NYLJ 7-22-54).

PROCEEDINGS INSTITUTED:
Austin v. Cavanagh, Petitioner seeks order to restore him to position of fireman, from which he was discharged for medical reasons.

MERCURY

MUST SELL 100 NOW!
Special to Civil Service Workers. \$190 Over Factory Invoice. See Manager. 348 Flatbush Ave. Ext. HABER-MERCURY opp. B'klyn Paramount. Under 300 UL 5-2300

'QUANTITIES of QUALITY'

In Late Model Used Cars ALL at a PRICE SHOP and SAVE at PACKARD Broadway at 61st St. CO 5-3900

CIVIL SERVICE LEADER America's Leading Newsmagazine for Public Employees CIVIL SERVICE LEADER, Inc. 97 Duane St., New York 7, N. Y. Telephone: BEekman 3-6010 Entered as second-class matter October 2, 1939, at the post office at New York, N. Y., under the Act of March 3, 1879. Members of Audit Bureau of Circulations. Subscription Price \$3.00 Per Year. Individual copies, 10c.

SPOT NEWS of civil service happenings, with forecasts of what will happen, is found weekly in the Newsletter column. By all means read it.

QUALITY CARS

'46 CHEV. Sed., r&h. \$ 195
'47 OLDS. Sdntr. Hydra. 295
'48 PONT. Sdntr. Hydra. 395
'48 BUICK Super Conv. 595
'50 CHEV. Metal Sta. Wag. Like New 895
'51 BUICK Riviera 1295
'53 MERCURY 2-Dr. Sed. 1495

We believe the "Bargain" is in the Car, NOT the Price!

75 Others to Choose From
UNGER AUTO
61st St. & Northern Blvd. RA 9-0000
57th St. & Queens Blvd. NE 9-3500

NOW! We Mean, NOW!
Check Us For Best Deal!

'54 FORDS
as low as \$1798

No Fixed Down Pay!!
\$6 Mo. to Pay. 1-Hour Delivery
Your old Car is worth MORE HERE

Come In and Find Out Why!
McKENZIE FORD

Authorized Ford Dealer
3445 White Plains Rd.
OL 2-5600

SPECIALS

'50 Studebaker 4 dr Sed. R&H 305
'49 Oldsmobile Sed. R&H Hyd 505
'51 Ford Deluxe 2 Door R&H 605
'52 Dodge 4 Door R&H 995
'50 Pontiac Sta. Wgn. (all mt) 845
'51 DeSoto Sub. 8 pas R&H 645
'51 De Soto Suburban 8 Pas. R&H Auto Drive 995
'50 Pontiac 4 Door Sedan R&H Hyd. Tinted Glass Slip Cov. 1195

ISLAND PONTIAC
44th St. & Northern Blvd.
AAAAA. AS 4-9502 AAAAAA

THE BEST DEAL FOR YOU ON 1954
CHEVROLET \$1695 Under 300 ml.
PASS. SEDAN
BENSON 21st & 16th Ave. Brooklyn BE 2-0200

DON'T BUY A CAR UNTIL YOU SEE ME
Ralph Tambasco TE 8-2700

30% TO 60% DISCOUNT

Washers, Refrigerators, Televisions, Freezers.
ALL FAMOUS BRANDS—General Electric, Hotpoint, RCA Victor, Westinghouse, Whirlpool, Maytag, Norge, Bendix, Thor, Emerson, Admiral, Crosley.
Toasters - Broilers - Irons
Clocks - Vacuum Cleaners and thousands of items too numerous to mention.

IMPORTANT
Bring and show your Civil Service Identification or Association membership cards.

GRINGER

Est. 1918.
Remember Gringer Is a Very Reasonable Man!
29 First Ave. GR. 5-0600.

TERRIFIC VALUES

FOR
CIVIL SERVICE EMPLOYEES

MORE CHEVROLETS ARE SOLD EVERY YEAR THAN OTHER CARS

Here's a typical offer:

1950 - 4 DOOR CHEVROLET, DELUXE, Radio and Heater \$800

Come in and Show Proof You Are a Civil Employee and Walk Out Satisfied.

IF IT'S OK
OK USER CARS
IT'S GOT TO BE GOOD

New Chevrolets start at \$1,696.50 for ... Model 150 2 door, 6 passenger

BEDFORD CHEVROLET SALES CORP.

1410 Bedford Ave., Brooklyn (Cor Prospect Place)
32 Years of Reliable Service
Open Weekday Evenings Till 9 P.M. — Sat. 9 to 6
MAin 2-0500

Old and New State Salaries

(Continued from Page 1)

Assistant Signal Engineer, 20, 19.
 Assistant Soils Engineer, 20, 19.
 Assistant State Accounts Auditor, 14, 14.
 Assistant Superintendent, 28, 24.
 Assistant Superintendent of Construction, 14, 14.
 Assistant Superintendent of Game Farms, 20, 16.
 Assistant Superintendent of Jones Beach State Park, 26, 23.
 Assistant Superintendent, Law Enforcement, 20, 18.
 Assistant Superintendent of Long Island Parks, 32, 27.
 Assistant Superintendent of Operation and Maintenance, 46, 35.
 Assistant Superintendent of Tree Nurseries, 20, 16.
 *Assistant Superintendent of Training School, 28, 24.
 Assistant Superintendent of Vocational Institution, 28, 24.
 Assistant Superintendent of Women's Prison and Reformatory, 28, 24.
 Assistant Superintendent of Women's Reformatory, 25, 23.
 Assistant Supervisor of Milk Sanitation, 28, 24.
 Assistant Supervisor of Motor Carriers, 23, 20.
 Assistant Supervisor of Park Operations, 12, 13.
 Assistant to Supervisor of Printing Contracts, 20, 18.
 *Assistant Supervisor of Stream Improvement, 14, 12.
 Assistant Tax Valuation Engineer, 20, 19.
 Assistant in Teacher Certification, 20, 19.
 Assistant Technical Director, Building Codes, 35, 29.
 Assistant in Test Development, 20, 19.
 Assistant Telephone Engineer, 20, 19.
 Assistant Underwriter, 12, 12.
 Assistant Underwriting Director, 34, 28.
 Assistant Utility Rates Analyst, 14, 14.
 Assistant Valuation Engineer, 20, 19.
 Assistant in Vision Conservation, 20, 19.
 Associate Accountant, 25, 23.
 Associate Actuary, 28, 24.
 Associate in Adult Education, 25, 23.
 Associate in Agricultural Education, 25, 23.
 Associate Analytical Chemist, 25, 23.
 Associate Architect, 32, 27.
 Associate Architectural Estimator, 32, 27.
 Associate Architectural Specifications Writer, 32, 27.
 Associate Attorney, 32, 27.
 Associate Bacteriologist, 25, 23.
 Associate Biochemist, 25, 23.
 Associate Biophysicist, 25, 23.
 Associate Biostatistician, 28, 23.
 Associate Budget Examiner, 32, 27.
 Associate Building Construction Engineer, 32, 27.
 Associate Building Electrical Engineer, 32, 27.
 Associate Building Mechanical Engineer, 32, 27.
 Associate Building Structural Engineer, 32, 27.
 Associate Business Consultant, 31, 26.
 Associate in Business Education, 25, 23.
 Associate Cancer Research Anesthesiologist, 34, 29.
 Associate Cancer Research Breast Surgeon, 34, 29.
 Associate Cancer Research Dermatologist, 34, 29.
 Associate Cancer Research Gastro-intestinal Surgeon, 34, 29.
 Associate Cancer Research Gynecologist, 34, 29.
 Associate Cancer Research Head and Neck Surgeon, 34, 29.
 Associate Cancer Research Internist, 34, 29.
 Associate Cancer Research Neurosurgeon, 34, 29.
 Associate Cancer Research Pathologist, 34, 29.
 Associate Cancer Research Radiologist, 34, 29.
 Associate Cancer Research Reconstructive Surgeon, 34, 29.
 Associate Cancer Research Roentgenologist, 34, 29.
 Associate Cancer Research Scientist, 34, 29.
 Associate Cancer Research Thoracic Surgeon, 34, 29.
 Associate Cancer Research Urologist, 34, 29.
 Associate Case Analyst, 25, 23.
 Associate Chemical Engineer, 32, 27.
 Associate Chief Cancer Research Anesthesiologist, 42, 32.
 Associate Chief Cancer Research Breast Surgeon, 42, 32.

Associate Chief Cancer Research Dermatologist, 42, 32.
 Associate Chief Cancer Research Gastro-intestinal Surgeon, 42, 32.
 Associate Chief Cancer Research Gynecologist, 42, 32.
 Associate Chief Cancer Research Head and Neck Surgeon, 42, 32.
 Associate Chief Cancer Research Internist, 42, 32.
 Associate Chief Cancer Research Neurosurgeon, 42, 32.
 Associate Chief Cancer Research Pathologist, 42, 32.
 Associate Chief Cancer Research Pediatrician, 42, 32.
 Associate Chief Cancer Research Physician (Clinical Laboratories), 42, 32.
 Associate Chief Cancer Research Radiologist, 42, 32.
 Associate Chief Cancer Research Reconstructive Surgeon, 42, 32.
 Associate Chief Cancer Research Roentgenologist, 42, 32.
 Associate Chief Cancer Research Thoracic Surgeon, 42, 32.
 Associate Chief Cancer Research Urologist, 42, 32.
 Associate in Child Development, 25, 23.
 Associate Civil Engineer, 32, 27.
 Associate Clinical Psychiatrist, 34, 29.
 Associate Compensation Claims Auditor, 25, 23.
 Associate Compensation Claims Examiner, 22, 19.
 Associate Claims Engineer, 32, 27.
 *Associate Compensation Examining Ophthalmologist, 34, 29.
 Associate Compensation Examining Physician, 34, 29.
 Associate Contract Engineer, 32, 27.
 Associate Coordinator of Education Research, 32, 27.
 Associate Corporation Tax Examiner, 23, 20.
 Associate Counsel, 32, 27.
 Associate Curator, 20, 18.
 †Associate Dentist, 29, 25.
 Associate Director of Laboratories and Research, 44, 34.
 Associate Director of Medical Services, 44, 34.
 Associate Director of Mental Hospital, 40, 33.
 Associate Disability Benefits Examiner, 20, 18.
 Associate Economic Research Editor, 25, 23.
 Associate Economist, 25, 23.
 Associate in Education Guidance, 25, 23.
 Associate in Education of Mentally Handicapped, 25, 23.
 Associate in Education of Physically Handicapped, 25, 23.
 Associate in Education Research, 25, 23.
 Associate in Education of Speech Handicapped, 25, 23.
 Associate Electric Engineer, 32, 27.
 Associate in Elementary Curriculum, 25, 23.
 Associate Employment Manager, 26, 23.
 Associate Engineering Examiner, 25, 23.
 Associate Examiner of Methods and Procedures, 25, 23.
 Associate Examiner of Municipal Affairs, 25, 23.
 Associate Examiner of State Payrolls, 22, 20.
 Associate Gas Engineer, 32, 27.
 Associate General Office Engineer, 32, 27.
 Associate Grade Separation Engineer, 32, 27.
 Associate Hardware Specifications Writer, 32, 27.
 Associate in Health and Physical Education, 25, 23.
 Associate Heating and Ventilating Engineer, 32, 27.
 Associate Hematologist, 34, 29.
 Associate in Higher Education, 25, 23.
 Associate in Higher Education Research, 25, 23.
 Associate in Home Economics Education, 25, 23.
 Associate Housing Technical Analyst, 32, 27.
 Associate Hydraulic Engineer, 32, 27.
 Associate Income Tax Examiner, 23, 20.
 Associate in Industrial Arts Education, 25, 23.
 Associate Industrial Codes Engineer, 32, 27.
 Associate Industrial Consultant, 31, 26.
 Associate in Industrial Education, 25, 23.
 Associate Industrial Engineer, 32, 27.
 Associate Industrial Hygiene Engineer, 32, 27.
 Associate Industrial Hygiene Physician, 34, 29.
 Associate Insurance Examiner, 30, 26.

Associate Insurance Policy Examiner, 30, 26.
 Associate Insurance Sales Representative, 24, 21.
 Associate Land and Claims Adjuster, 33, 27.
 Associate Landscape Architect, 32, 27.
 Associate Librarian, 25, 22.
 Associate Library Supervisor, 25, 23.
 Associate Local Assessment Examiner, 25, 20.
 Associate Mechanical Construction Engineer, 32, 27.
 Associate Mechanical Estimator, 32, 27.
 Associate Medical Bacteriologist, 34, 29.
 Associate Medical Biochemist, 34, 29.
 Associate Mental Health Consultant, 25, 22.
 Associate in Merchandising Education, 25, 23.
 Associate Milk Accounts Examiner, 25, 23.
 Associate Milk Sanitarian, 23, 20.
 Associate Municipal Research Assistant, 25, 22.
 Associate in Nursing Education, 25, 23.
 Associate Nutritionist, 25, 22.
 Associate Park Engineer, 32, 27.
 Associate Pathologist, 34, 29.
 Associate Payroll Auditor, 20, 18.
 Associate Payroll Examiner, 17, 16.
 Associate Personnel Administrator, 25, 23.
 Associate Personnel Technician, 25, 23.
 Associate in Physical Education and Recreation, 25, 23.
 Associate Physician, 34, 29.
 Associate Planning Technician, 25, 22.
 Associate Plant Pathologist, 25, 23.
 Associate Plumbing Engineer, 32, 27.
 Associate in Private Trade School Administration, 25, 23.
 Associate in Professional Education, 23; shows new title, applying to one position now in G-25 and one position now in G-30.
 Associate Public Health Dentist, 29, 26.
 Associate Public Health Nutritionist, 25, 22.
 Associate Public Health Physician, 34, 29.
 Associate Public Records Analyst, 25, 22.
 Associate Publicity Agent, 25, 23.
 Associate Publicity Editor, 32, 26.
 Associate Radio-Physicist, 25, 23.
 Associate Rates Examiner, 22, 20.
 Associate Rehabilitation Counselor, 25, 22.
 Associate Research Analyst, 32, 27.
 Associate Research Scientist, 34, 29.
 Associate Safety Service Representative, 20, 18.
 Associate Sanitary Chemist, 25, 23.
 Associate Sanitary Engineer, 32, 27.
 Associate in School Attendance, 25, 23.
 Associate in School Business Management, 25, 23.
 Associate in School District Organization, 25, 23.
 Associate in School Financial Aid, 25, 23.
 Associate in School Health Education, 25, 23.
 Associate in School Health Services, 25, 23.
 Associate in School Lunch Administration, 25, 23.
 Associate in School Nursing, 25, 23.
 Associate Scientist, 29, 25.
 Associate in Secondary Curriculum, 25, 23.
 Associate Self-Insurance Examiner, 22, 19.
 *Associate Social Psychologist, 25, 22.
 Associate Sociologist, 25, 22.
 Associate Soils Engineer, 32, 27.
 Associate Special Tax Investigator, 26, 23.
 Associate State Accounts Auditor, 25, 23.
 Associate Statistician, 26, 23.
 Associate Tax Collector, 20, 18.
 Associate Tax Valuation Engineer, 32, 27.
 Associate in Teacher Certification, 25, 23.
 Associate in Teacher Education, 25, 23.
 Associate Telephone Engineer, 32, 27.
 Associate in Test Development, 25, 23.
 Associate Training Technician, 25, 23.
 Associate Underwriter, 22, 19.
 Associate Unemployment Insurance Reviewing Examiner, 22, 19.
 Associate Utility Rates Analyst, 25, 23.
 Associate Valuation Engineer, 32, 27.
 Associate Veterinarian, 25, 24.
 Associate Veterinarian Bacteriologist, 25, 23.
 Associate in Vocational Arts and Crafts Education, 25, 23.

Associate in Vocational Curriculum, 25, 23.
 Associate Welfare Consultant, 25, 23; this determination also applies to the one position in this class which is now allocated to G-23.
 Attendant, 2, 4.
 Attorney, 20, 18.
 Audit Clerk, 2, 3.
 Automotive Maintenance Inspector, 14, 13.
 Baker, 7, 8.
 Baker Helper, LG-1, 2.
 Band Master, 7, 8.
 Bank Examiner, 20, 18.
 Barber, 4, 5.
 Bath Attendant, 2, 3.
 Beach Equipment Foreman, 10, 11.
 Beautician, 4, 5.
 Bedding Inspector, 11, 12.
 Beverage Control Investigator, 14, 13.
 Beverage License Examiner, 8, 9.
 *Billing Machine Operator, 4, 4.
 Bindery Helper, LG-1, 1.
 Biochemist, 14, 14.
 Biophysicist, 14, 14.
 Biostatistician, 17, 14.
 Blacksmith, 8, 10.
 Blind Typist, 2, 3.
 Blindness Prevention Consultant, 18, 16.
 Blister Rust Foreman, 9, 9.
 *Blood Protein Senior Research Scientist, 25, 23.
 Boat Inspector, 17, 15.
 Bobsled Run Superintendent, 8, 9.
 Boiler Inspector, 12, 13.
 Bookbinder, 9, 10.
 Bookbinder Apprentice, 2, 4.
 *Bookkeeping Machine Operator, 2, 4.
 Bottling Plant Assistant Foreman, 7, 9.
 Bottling Plant Foreman, 11, 12.
 Boys' Supervisor, 4, 5.
 Braacemaker, 8, 11.
 Braacemaker Foreman, 11, 13.
 Braacemaker Helper, LG-3, 4.
 Braille Stereotypist, 7, 10.
 Braille Telephone Operator, 2, 3.
 Bridge Helper, LG-2, 2.
 Bridge Operator, 6, 7.
 Bridge Repair Foreman, 16, 15.
 Budget Aide, 9, 10.
 Budget Examiner, 21, 18.
 Building Codes Field Representative, 15, 16.
 Building Guard, 4, 4.
 Building Superintendent, 25, 22.
 Buoy Light Tender, 3, 4.
 Business Assistant to the Commissioner, 50, 36.
 Business Consultant, 19, 18.
 Business Officer, 30, 27.
 Business Promotion Representative, 35, 28.
 Canal Electrical Supervisor, 12, 13.
 Canal General Foreman, 16, 16.
 Canal Maintenance Foreman, 9, 11.
 Canal Permit Agent, 20, 16.
 Canal Section Superintendent, 22, 21.
 Canal Shop Foreman, 12, 13.
 Canal Structure Operator, 6, 7.
 Canal Terminal Supervisor, 12, 11.
 Cancer Research Scientist, 20, 18.
 Canning Plant Operator, 5, 6.
 Canvas Trimmer, 5, 7.
 Canvas Worker, 8, 9.
 Captain, 22, 19.
 Captain of the Fire Watch, 4, 5.
 Captain, Park Patrol, 22, 19.
 Carpenter, 8, 11.
 Carpenter Foreman, 11, 13.
 Cartographer, 8, 6.
 Cashier, 8, 8.
 *Cattle Appraiser, 16, 11.
 Chaplain, 17, 16.
 Charge Matron, 9, 11.
 Chauffeur, 5, 6.
 Chemical Engineer, 20, 19.
 Chemist, 14, 14.
 Chief Account Clerk, 25, 22.
 Chief Accountant, 39, 31.
 Chief Actuary, 42, 33.
 Chief Aircraft Pilot, 25, 22.
 Chief Aquatic Biologist, 25, 23.
 Chief Architect, 42, 33.
 Chief Audit Clerk, 25, 22.
 Chief Auditor of Highway Accounts, 31, 27.
 Chief Auditor of State Expenditures, 32, 27.
 Chief Auditor of State Payrolls, 32, 27.
 Chief Auditor of State Refunds, 37, 29.
 Chief Auditor of Welfare Accounts, 31, 26.
 Chief Bank Examiner, 46, 34.
 Chief Bridge Operator, 9, 11.
 Chief Budget Examiner, 50, 38.
 Chief Building Guard, 13, 10.
 Chief, Bureau of Adult Education, 32, 27.
 Chief, Bureau of Agricultural Education, 32, 27.
 Chief, Bureau of Business Education, 32, 27.
 Chief, Bureau of Child Development and Parent Education, 32, 27.
 Chief, Bureau of Education Publications, 32, 27.
 Chief, Bureau of Elementary Curriculum Development, 32, 27.
 Chief, Bureau of Elementary School Supervision, 32, 27.

Chief, Bureau of Enforcement and Field Services, 25, 23.
 Chief, Bureau of Examinations and Testing, 32, 27.
 Chief, Bureau of Field Service, 32, 27.
 Chief, Bureau of Fire Safety, 32, 27.
 Chief, Bureau of Fish, 28, 24.
 Chief, Bureau of Game, 28, 24.
 Chief, Bureau for Handicapped Children, 32, 27.
 Chief, Bureau of Health Services, 34, 29.
 Chief, Bureau of Home Economics Education, 32, 27.
 Chief, Bureau of Industrial Arts Education, 32, 27.
 Chief, Bureau of Occupational Extension and Industrial Service, 32, 27.
 Chief, Bureau of Physical Education, 32, 24.
 Chief, Bureau of Police Safety, 32, 27.
 Chief, Bureau of Private Trade and Correspondence Schools, 32, 27.
 Chief, Bureau of Professional Education, 32, 27.
 Chief of Bureau of Public Work, 25, 22.
 Chief, Bureau of Rural Administrative Service, 32, 27.
 Chief, Bureau of School Financial Aid Planning, 32, 27.
 Chief, Bureau of Secondary Curriculum Development, 32, 27.
 Chief, Bureau of Secondary School Supervision, 32, 27.
 Chief, Bureau of Statistical Service, 28, 24.
 Chief, Bureau of Trade and Technical Education, 32, 27.
 Chief, Bureau of Truck Weighing, 20, 18.
 Chief, Bureau of Vocational Curriculum Development and Industrial Teacher Training, 32, 27.
 Chief, Bureau of Vocational and Educational Guidance, 32, 27.
 Chief of Charities Registrations, 30, 25.
 Chief Child Guidance Psychiatrist, 40, 33.
 Chief Clerk, 22, 20.
 Chief Commutation Clerk, 20, 18.
 Chief Compensation Investigator, 22, 19.
 Chief Construction Safety Inspector, 28, 24.
 Chief Disability Benefits Examiner, 30, 25.
 Chief Examiner, Management, 50, 38.
 Chief Factory Inspector, 28, 24.
 Chief File Clerk, 22, 20.
 Chief Gas Meter Tester, 11, 12.
 Chief Grade Separation Engineer, 39, 31.
 Chief Hearing Reporter, 25, 21.
 Chief Hydraulic Engineer, 42, 33.
 Chief Industrial Investigator, 28, 24.
 Chief Institution Safety Supervisor, 13, 12.
 †Chief Insurance Examiner, 34.
 Chief Laundry Supervisor, 14, 14.
 Chief Law Department Investigator, 31, 25.
 Chief Lock Operator, 9, 11.
 Chief of Long Island Park Patrol, 26, 23.
 Chief Motion Picture Reviewer, 22, 20.
 Chief Motor Equipment Maintenance Supervisor, 28, 25.
 Chief Office Machine Operator, 20, 20.
 Chief Parole Officer, 28, 25.
 Chief of Power Bureau, 42, 34.
 Chief of Railroad Bureau, 42, 33.
 Chief Rates Examiner, 32, 24.
 Chief Real Estate Appraiser, 42, 29.
 Chief Rent Examiner, 32, 27.
 *Chief Rent Accountant, 38, 24.
 Chief Self-Insurance Examiner, 34, 28.
 Chief, Social Security Agency, 28, 24.
 Chief Special Agent (Department of Mental Hygiene), 37, 23.
 Chief Stationary Engineer, 22, 21.
 Chief Stenographer, 20, 17.
 Chief Supervising Attendant, 13, 16.
 Chief Supervising Nurse, 19, 18.
 Chief, Surplus Property Agency, 25, 22.
 Chief of Telephone Bureau, 42, 33.
 Chief of Unemployment Insurance Tax Liability Determinations, 37, 28.
 Chief of Water Bureau, 42, 33.
 Child - Guidance Psychiatrist, 34, 30.
 Civil Service District Representative, 14, 15.
 Civil Service District Supervisor, 20, 20.
 Cleaner, LG-2, 2.
 Clerk, 2, 3.
 Clerk-Messenger, 10, 11.
 Clinical Psychologist, 14, 18.
 Clothing Clerk, 2, 3.
 Coffee Roaster, 6, 8.
 Colony Supervisor, 6, 8.
 Commercial Artist, 25, 18.
 Commissary Officer, 12, 12.
 Commodities Tax Examiner, 14, 14.

Real estate buys. See P. 11.

(Continued on Page 14)

Exams Now Open For Public Jobs

Pay rates for State jobs are those given on the official announcements, which were issued before the new State salary schedules were issued.

STATE Open-Competitive

Candidates must be U. S. citizens and residents of New York State, unless otherwise indicated. Apply at offices of the State Civil Service Department, 270 Broadway, NYC; State Office Building or 39 Columbia Street, Albany; and State Office Building, Buffalo.

The closing date is given at the end of each notice.

0203. MEDICAL DEFENSE HOSPITAL CONSULTANT, \$10,138 to \$11,925; one vacancy in Health Department, Albany. Open to all qualified citizens and non-citizens, and to non-residents. Requirements: (1) State license to practice medicine; (2) one year of post-graduate study in hospital administration or public health; (3) one year's experience in hospital administration involving administrative responsibility; and (4) either (a) six years of medical experience in public health or hospital administration, of which two years must have involved major administrative responsibility, or (b) four years' experience, including two years of administrative experience, and two years of general medical practice. Fee \$5. (Friday, September 3).

0205. SENIOR CLINICAL PSYCHIATRIST, \$6,801 to \$8,231; one vacancy in Department of Mental Hygiene at Psychiatric Institute, NYC. Requirements: (1) State license to practice medicine; (2) graduation from medical school and completion of internship; and (3) three years' full-time residency in psychiatric hospitals. Fee \$5. (Friday, September 3).

0206. SUPERVISING PHYSICAL THERAPIST, \$4,053 to \$4,889; one vacancy in Rehabilitation Hospital, West Haverstraw. Open to all qualified U. S. citizens. Requirements: State license to practice physiotherapy and two years' experience. Fee \$3. (Friday, September 3).

0207. SUPERVISING PHYSICAL THERAPIST (PUBLIC HEALTH), \$4,053 to \$4,889; three vacancies in Bureau of Public Health Nursing, Department of Health. Open to all qualified U. S. citizens. Requirements: State license to practice physiotherapy and two years' experience, of which one year must have involved field activities in public health agency. Fee \$3. (Friday, September 3).

0208. BIOCHEMIST, \$4,053 to \$4,889; two vacancies in State University Medical Center, Syracuse. Requirements: (1) bachelor's degree with specialization in chemistry, and (2) either (a) one year's experience in biochemistry, or (b) master's degree in organic chemistry, physical chemistry or biochemistry, or (c) equivalent. Fee \$3. (Friday, September 3).

0209. SENIOR MEDICAL TECHNICIAN, \$3,251 to \$4,052 (\$3,411 to \$4,212 for TB service); three vacancies in Department of Health, one each at Newburgh and Mt. Morris and J. N. Adams Memorial Hospitals (TB service); one in Department of Mental Hygiene at Rome State School; one each at Clinton Prison and Dannemora State Hospitals, Correction Department. Requirements: (1) high school graduation or equivalent; and (2) either (a) completion of course in medical technology and two years' experience as technician in medical laboratory, or (b) four years' experience, of which two years must have been under qualified supervision, or (c) equivalent. Fee \$3. (Friday, September 3).

0210. SENIOR LABORATORY ANIMAL CARETAKER, \$2,931 to \$3,731; one vacancy in State University Medical Center, Brooklyn. Requirements: either (a) two years' full-time paid experience in handling and care of laboratory animals, or (b) equivalent. Fee \$2. (Friday, September 3).

0211. ASSOCIATE ARCHITECT \$7,754 to \$9,394; one vacancy in Division of Housing, NYC, and one in Department of Public Works, Albany. Requirements: (1) State license to practice professional architecture; and (2) four years' experience performing architectural work on building plans and designs. Fee \$5. (Friday, September 3).

0212. MOTOR VEHICLE INSPECTOR, \$4,206 to \$5,039; two vacancies in Department of Pub-

lic Service, Buffalo, and one expected in NYC. Requirements: (1) high school graduation or equivalent; and (2) either (a) five years' experience in repair, assembling or mechanical inspection of buses or heavy trucks, or (b) five years' experience with responsibility for supervision of complete general maintenance of buses or trucks, or (c) equivalent. Fee \$3. (Friday, September 3).

0213. PRINCIPAL OFFICE MACHINE OPERATOR (REPRODUCTION), First, Second and Tenth Judicial Districts, \$3,731 to \$4,532; vacancies in Temporary State Housing Rent Commission, NYC. Open only to residents of NYC and Nassau and Suffolk Counties. Requirements: three years' experience in operation of duplicating and related office machines, including offset printing machines, of which one year must have been in responsible supervisory capacity. Fee \$3. (Friday, September 3).

0214. TREE PRUNER FOREMAN, \$2,931 to \$3,731; one vacancy in Department of Public Works, Albany. Requirements: two years' experience in tree care and removal. Fee \$2. (Friday, September 3).

0099. TOLL SERVICEMAN, \$3,091 to \$3,891; six vacancies at present on State Thruway; 12 more expected when entire Thruway is opened. Requirements: driver's license; minimum age, 21; minimum height, 5 feet 6 inches; minimum weight, 135 pounds; satisfactory hearing and vision; good physical condition. Fee \$3. (Friday, August 20).

0087. SUPERVISOR OF TRAINING FOR PRE-SCHOOL BLIND CHILDREN, \$4,512 to \$5,339; one vacancy in Commission for Blind, NYC. Requirements: Either (1) bachelor's degree with specialization in early childhood education, plus three years' experience in teaching nursery school, kindergarten or primary grades, including one year of teaching pre-school children; or (2) graduation from school of nursing, with 30 semester hours in child development, child guidance, educational psychology, etc., State license as registered professional nurse, plus three years' experience in health work with pre-school children; or (c) equivalent. Fee \$3. (Friday, August 20).

0088. GUIDANCE COUNSELOR, \$3,251 to \$4,052; vacancies at Attica and Sing Prisons, Elmira Reformatory, Great Meadow and Woodbourne Correctional Institutions, and State Vocational Institution, West Coxsackie. Requirements: (1) college graduation; and (2) either (a) one year's experience in employment interviewing, guidance, social work or institutional work, or (b) 30 graduate hours with specialization in guidance, social work or personnel administration, or (c) equivalent. Fee \$3. (Friday, August 20).

0089. HOSPITAL ADMINISTRATIVE OFFICER, \$8,946 to \$10,733; one vacancy in Department of Health at Roswell Park Memorial Institute, Buffalo. Open to all qualified citizens of U. S. Requirements: (1) master's degree in hospital administration (including one year of internship); (2) one year as assistant administrator of hospital of at least 100 beds, or as administrator of hospital of at least 50 beds; and (3) either (a) two more years of above experience, or (b) four more years of hospital administrative experience, or (c) two more years of hospital administrative experience and two years of general administrative or professional experience, such as teaching, or (d) equivalent. Fee \$5. (Friday, August 20).

0092. JUNIOR BUILDING STRUCTURAL ENGINEER, \$4,053 to \$4,889; vacancies in Department of Public Works, Albany. Open to all qualified U. S. citizens. Requirements: same as 0090 above. Fee \$3. (Friday, August 20).

0090. JUNIOR CIVIL ENGINEER, \$4,053 to \$4,889; vacancies with Department of Public Works in Albany and district offices.

Open to all qualified U. S. citizens. Requirements: either (a) completion of Parts 1 and 2 of State license exam for professional engineers; or (b) five years' engineering experience or training. Fee \$3. (Friday, August 20).

0091. JUNIOR CIVIL ENGINEER (DESIGN), \$4,053 to \$4,889; vacancies in Department of Public Works, Albany. Open to all qualified U. S. citizens. Requirements: same as 0090 above. Fee \$3. (Friday, August 20).

0093. JUNIOR ELECTRICAL ENGINEER, \$4,053 to \$4,889; vacancies in Department of Public Service in Albany and NYC. Open to all qualified U. S. citizens. Requirements: same as 0090 above. Fee \$3. (Friday, August 20).

0094. JUNIOR GAS ENGINEER, \$4,053 to \$4,889; vacancies in Department of Public Service at Albany, NYC, Buffalo and Syracuse. Open to all qualified U. S. citizens. Requirements: same as 0090 above. Fee \$3. (Friday, August 20).

0095. JUNIOR HEATING AND VENTILATING ENGINEER, \$4,053 to \$4,889; vacancies in Department of Public Works, Albany. Open to all qualified U. S. citizens. Requirements: same as 0090 above. Fee \$3. (Friday, August 20).

0096. JUNIOR PLUMBING ENGINEER, \$4,053 to \$4,889; vacancies in Department of Public Works, Albany. Open to all qualified U. S. citizens. Requirements: same as 0090 above. Fee \$3. (Friday, August 20).

0097. JUNIOR VALUATION ENGINEER, \$4,053 to \$4,889; vacancies in Department of Public Service in Albany and NYC. Open to all qualified U. S. citizens. Requirements: same as 0090 above. Fee \$3. (Friday, August 20).

0098. PUBLICITY AGENT, \$4,359 to \$5,189; two vacancies in Commerce Department, Albany, and one in Civil Defense Commission, NYC. Requirements: (1) high school graduation or equivalent; (2) two years' experience in publicity, newspaper or magazine editorial work or advertising copywriting and layout work; and (3) either (a) three more years' experience, or (b) bachelor's degree in English or journalism, or (c) equivalent. Fee \$3. (Friday, August 20).

equivalent. Fee \$3. (Friday, August 20).

STATE Promotion

Candidates in the following exams must be present, qualified employees of the department or promotion unit mentioned. Last day to apply is given at the end of each notice.

0075. SUPERVISING PSYCHIATRIST (Prom.), Institutions, Departments of Mental Hygiene and Correction, \$8,350 to \$10,138; 50 vacancies in Mental Hygiene; three at Dannemora and four at Matteawan, Department of Correction. Three months as senior psychiatrist. Fee \$5. (Friday, September 3).

0076. DIRECTOR OF MEDICAL DEFENSE (Prom.), Department of Health (exclusive of Division of Laboratories and Research and the (Continued on Page 8)



TO CIVIL SERVICE EMPLOYEES

- RADIOS
- CAMERAS
- TELEVISION
- TYPEWRITERS
- RANGES
- JEWELRY
- SILVERWARE
- REFRIGERATORS
- ELECTRICAL APPLIANCES

ANCHOR RADIO CORP.
ONE GREENWICH ST.
(Cor. Battery Place, N. Y.)
TEL. Whitehall 3-4280
Lobby Entrance - One B'way Bldg.
(OPPOSITE CUSTOM HOUSE)

be an angel—

HERE'S YOUR CHANCE TO BACK A BROADWAY SHOW!



At last, the Broadway theatre is an investment within your reach. For only 50¢ a share, you can buy stock in a corporation that invests regularly in Broadway shows, motion pictures, television and radio. By "pooling" the capital of many investors, BROADWAY ANGELS, INC. creates a fund large enough to back entire shows and to acquire broad interests in the entertainment field by diversifying not more than 40% of its capital. A board of experienced, professional advisers, many of them famous, all of them respected names in the theatre, make the selection of shows worthy of investment.

Few people realize the margin of profit returned on original investments in successful shows. For example, "Voice of the Turtle" showed a profit of 3,000% on the initial investment; "Mister Roberts" paid off 5 to 1 "Harvey" paid off \$40 to \$50 for every \$1 invested. These are extremes, of course, the returns on the average successful shows are not that big and many shows are a complete financial loss.

By spreading the initial investments and by applying profit against loss, we believe that we are offering the safest, most down to earth theatre investment yet devised... and the investment with the best assurance of bringing substantial returns. BROADWAY ANGELS, INC. is offering at this time 570,000 shares at 50¢ a share. If an established securities firm is employed to distribute these securities, there is an allowance of \$71,250 brokerage commissions and \$15,000 for expenses leaving \$201,750 working capital. If the entire issue is sold direct, the working capital is estimated at \$200,000.

A Letter of Notification under Regulation A has been filed with the Securities & Exchange Commission. This does not mean that the Commission has either approved or disapproved these securities or passed upon the completeness or accuracy of the statements in the Offering Circular issued in connection therewith.

BROADWAY ANGELS, INC., Dept. C-4
29 West 65th St., N. Y. 23, N. Y.
TR 4-1815

Send Offering Circular without cost or obligation.

NAME

ADDRESS

CITY ZONE

STATE

Phone Number

PHOTO by Con Edison



Atomic Surprise. A harmless atomic laboratory device stands Dotty's hair on end. But it won't be surprising if Dotty lives to see the day when atomic energy helps light New York. Right now, Con Edison men are part of a research team trying to find a way to cut the cost of using atomic energy to make electric power. Energy is our business... and you can be sure when the time comes that atomic energy can be used economically, Con Edison will put it to work helping supply New York with dependable, low-cost electricity.

EVER WISH YOU COULD WRITE SHORTHAND?

... but felt that it would take too long to learn? Here's a golden opportunity — to take shorthand notes in ONLY 4 DAYS! This amazingly simple short-hand method teaches you in four easy-to-understand lessons — all contained in one book. Highly recommended. \$1.50 prepaid. Money back guarantee. Send order to: **Elmerine Co. (140) 303 Fifth Ave, New York 10, N. Y.** Also available at Civil Service Leader Bookshop.

ACTIVITIES OF EMPLOYEES THROUGHOUT NEW YORK STATE

Syracuse

ETHEL C. CHAPMAN, membership chairman of Syracuse chapter, CSEA, wishes to thank her committee for its outstanding work during the past year. The chapter now has 1,065 members. The committee members were presented with awards: Hazel Cloyes, Banking; Helen Callahan, Workmen's Compensation; Katherine Powers and Margaret Thomas, Syracuse Psychopathic Hospital; Mrs. Mary Pierce, College of Forestry; Tom Ranger, College of Medicine; Lois Byington, Richard C. Atwood, Leon Brown and Eleanor Fleming, Public Works.

Congratulations to Eleanor Fleming on her promotion to senior clerk. A hearty welcome to the new department employees: Carol Sutkowski, Mary Goodell, Anne Hall and Mildred Bridges.

Mary English Hunter and her husband, Bill, both of Public Works, were vacationing at their summer home on the Seneca River. Mildred Ketchum has returned from a grand trip on the coast of Maine.

Sympathy to Bernard Welch, Public Works, on the death of his father.

Workmen's Compensation
Marie Wleczorek was recently feted by employees in the calendar section at a dinner at Krebs, Skaneateles. Marie is taking a maternity leave.

Clarice Adams, principal compensation clerk, has left for a trip to Yellowstone National Park. Ted and Darleen Downes were relaxing and fishing at Chaffee's Lodge, Canada. Anna May Vaughan is

planning to spend her vacation in Atlantic City. Doris LeFever has returned from a week's vacation at Eddy Farm Hotel. Katherine Lawler and her sister, Mary, were spending their vacation at Bell Harbor. L. I. Doris Keck spent a few days in NYC.

Chapter Officers

Members of Syracuse chapter held their annual social meeting and election of officers at Martin's Restaurant, North Syracuse. Raymond G. Castle, past president, installed the officers: Tom Ranger, College of Medicine, president; John Crowley, Division of Employment, 1st vice president; John Halperin, Public Works, 2nd vice president; Molly Doyle, State Insurance Fund, 3rd vice president; Ida Meltzer, Workmen's Compensation, treasurer; Margaret Whitmore, Mental Hygiene Commission, secretary; Doris LeFever, WCB, executive secretary.

Mr. Castle expressed his appreciation of the members' cooperation. Wedding congratulations to William Hepperle, former employee of District 3, Public Works, and his new Mrs.

Deepest sympathy to the family of William Muldoon, former payroll auditor in the State Insurance Fund.

Linda Miller Gregory of SIF is on leave of absence with her bridegroom, who is stationed in Virginia. John Kanja, SIF, is enjoying the sights of the big city (NYC). Miss Sheehan is spending her vacation in the Adirondacks.

Rehabilitation Hosp.

AN EVENING SAIL on the Sea Cub II, owned and operated by Capt. Robert Lee of Nyack, was arranged by the entertainment committee of the Rehabilitation Hospital chapter, on July 22. A most enjoyable sail was reported by the 44 guests aboard.

The Sea Cub II left Nyack dock at 7 P.M., sailed past the New York State Thruway Tappan Zee Bridge, giving everyone a magnificent close-up view, then sailed up the Hudson to Bear Mountain, and back to Nyack.

Hot and iced coffee and tea were served. In addition to music, there were a delicious home-made chocolate cake and a box of freshly picked mushrooms.

An auction took place under the guidance of Ray Amado, laboratory director. Fresh strawberries, raspberries, grapes, home-made cake, home-made jelly, honeydew melon, and a vegetable package consisting of celery, green peppers, and cucumbers, were auctioned—prices starting at one cent and going, in many cases to quite a sum, to the highest bidder. The climax was a "mystery package" which was guaranteed to be worth \$2. Mary Elizabeth Baker, senior medical social worker, bid \$2 and upon opening the package it contained—not a jumping toy as expected—but two crisp \$1 bills.

The night was beautifully clear and the weather perfect for a smooth sail; the boat docked back at Nyack at 10:30 P.M.—a wonderful time had by all, with expectations of another sail in the not too distant future.

DRIVER EXAMINER STUDY MATERIAL

The LEADER publishes study material for the coming State motor vehicle license examiner test, scheduled to be held Saturday, September 25. Last day to apply is Friday, August 20. Pay ranges from \$3,540 to \$4,490.

There are no educational or experience requirements. Both men and women from 21 to 40 are eligible. Veterans over 40 may deduct length of military service from actual age. Candidates must have had a driver's license for the past three years, and a New York State driver's or chauffeur's license for the past two years. Minimum height is 5 feet 6 inches; weight, at least 135 pounds.

Four of the following steps in problems 5 and 6 are necessary to complete the maneuver mentioned. List the four steps in proper sequence.

5. You have just stopped your car with engine running, parallel to and alongside the curb, facing down a steep hill and you wish to park your car. The procedure should be: (4 steps necessary.)

- A. Put the gears in reverse.
- B. Put the gears in high speed.
- C. Put on the emergency brake.
- D. Turn the wheels in facing the curb.
- E. Shut off the motor.
- F. Leave the wheels straight.
- G. Leave the motor running so that the compression will hold the car.
- H. Shut off the gas.

6. When you are coming to and about to cross a "stop boulevard" your procedure should be: (4 steps necessary.)

- A. Cross the street cautiously.
- B. Slow down and look both ways.
- C. Shift your gears to first speed.
- D. Blow your horn.
- E. Cross the street swiftly by dodging between the cars.
- F. Come to a full stop.
- G. Wait for a break in traffic to permit you to cross.

5. D-1, C-2, E-3, A-4.
6. F-1, G-2, C-3, A-4.

Examine each of the following statements. If you think a statement is true as a general rule, even though it may have exceptions, mark the statement True. If you think a statement is false when applied as a general rule, mark the statement False.

- 1. As a gesture of courtesy and

good will, motor vehicles owned by a foreign government are entitled to free registration in New York State.

2. A vision test is given to all applicants for a learner's permit.

3. It is not necessary for you to report to the Commissioner of Motor Vehicles an accident in which you are involved unless someone has been seriously injured or killed.

4. If the automobile which you are driving should start to skid on a straight icy road, you should throw out the clutch and apply the brakes.

5. In making a right hand turn, the driver of a motor vehicle should keep to the center of the street as far as possible.

KEY ANSWERS

- 1. true or false; 2. true; 3. false; 4. false; 5. false; 6. true; 7. true
- 6. In case of skidding while turning a slippery corner, it is considered better practice to slightly accelerate the engine rather than apply the brakes.

CLEARANCE 184 CARS MUST GO!

DEXTER WILL NOT BE UNDERSOLD!

Big Discounts! Terrific Deals! BIG TRADES!

BRAND NEW '54 DODGE PLYMOUTH

Most Models and Colors
Come in Early For Best Selection!

DEXTER

MOTORS
Factory Dodge-Plymouth Dealer
34 Years
1st Ave. at 98th St., NYC
SA 2-7600

For an analysis of civil service problems in the forefront of the news, read H. J. Bernard's weekly column, "Looking Inside." See Page 2.

2 for the price of 1



1-RIGHT NOW-A VACATION PARADISE that Solves Your Summer Problems Forever!
2-LATER ON - FOR RETIREMENT a solid year-round home in a solid community!

- All city-like conveniences. Post Office, Stores, Restaurants, Drive-In Theatre, Churches of All Faiths.
- Public School in the heart of Shirley with new junior high school recently approved.
- New industrial plant a few minutes drive from Shirley (now open with 1200 employees).
- N. Y. to Riverhead Thruway, planned to pass through Shirley, reducing travel time from city by 30 minutes.
- 5 beaches for ocean and bay bathing, trained lifeguards on duty, 3 casinos.
- Fishing, boating (deepwater inlet to the Atlantic Ocean) for pleasure boats and fishing craft.
- 7 miles of waterfront—and oceanfront park planned by county authorities.
- Gardening—organized recreational events.
- County bridge from Shirley to Fire Island to be constructed this year.

A BEAUTIFUL CAPE CODDER \$5,700 FULL PRICE NO DOWN PAYMENT
with 4 ROOMS and BATH
ONLY \$31.69 PER MONTH
FHA APPROVED MORTGAGE
The Deal to Your Land is All You Need

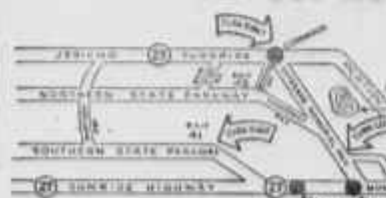
GOLDEN OPPORTUNITY TO INVEST in one of the FASTEST GROWING COMMUNITIES in AMERICA!

FULL HOMESITE \$495 OVER 10,000 Square Feet Equal to 5 1/2 Big City Lots. ONLY \$100 DOWN \$3 A WEEK JUST \$3

Choice Waterfront and Business Sites Priced According to Location
MANY OTHER LOW-COST SUMMER AND YEAR-ROUND HOMES TO CHOOSE FROM
BUY NOW—BUILD WHEN YOU LIKE!

SHIRLEY, L.I.

Where the Country Meets the Sea
New York Office, 500 Fifth Ave. Open Daily, 9 AM to 5 PM
Sundays, 9 AM to 6 PM
See Beautiful Color Movies of Shirley
Bryant 9-4700



DRIVE OUT TODAY... EASY to reach By Car Cars waiting to drive you and your family to Shirley as our guests

SHIRLEY, Long Island • Bryant 9-4700
500 5th Ave., 8th Fl., New York 36; N. Y. Corner 42nd St.

Without cost or obligation please send FREE TRANSPORTATION AND FULL DETAILS of your Shore Avenue offer.

Name _____ Please Print
Address _____ Apt. No. _____
City _____ Zone _____ State _____
CSL 8-10-54

Applications Are Now Being Issued!
Must Be Filed By Aug. 20th
MOTOR VEHICLE LICENSE EXAMINER
Salary \$3,540 to \$4,490 a Year
(Based on Salary Adjustment Now Being Made)
AGES: 21 through 39 yrs. (Veterans May Be Older)
VISION: 20/40, Each Eye, Glasses Permitted
Must Be Licensed Operator or Chauffeur for 3 Yrs.
Be a Guest at a Class Session of Our Course of Preparation
MANHATTAN: Tues. or Thurs. at 1:15, 5:30 or 7:30 P.M.
or in JAMAICA: Wed. or Fri. at 7:30 P.M.

Classes Now Forming for
Auto Mechanic - Insp. Construction Gr. 4
Surface Line Operator - Painter - Carpenter
Electrician's Helper - Asst. Supt. Construction Gr. 4
Inquire for Particulars

BUSINESS COURSES: Stenography - Typewriting - Secretarial
VOCATIONAL TRAINING: Color TV Servicing - Radio & TV Repair - Drafting - Auto Mechanics

ARE OPPORTUNITIES ESCAPING YOU?
Keep informed about coming exams by filing a CONFIDENTIAL QUESTIONNAIRE with us giving your qualifications. We will notify you by mail without charge of approaching popular exams for which you may be eligible. Questionnaire forms mailed FREE or may be obtained at our office.

The DELEHANTY Institute

MANHATTAN: 116 EAST 104th STREET — GR. 3-6700
JAMAICA: 90-14 SUTPHIN BOULEVARD — JA. 6-8300
Office Hours: MON. to FRI., 9 AM to 5 PM; SAT. 9 AM to 1 PM



Civil Service LEADER

America's Largest Weekly for Public Employees
 Member Audit Bureau of Circulations
 Published every Tuesday by
CIVIL SERVICE LEADER, INC.
 97 Duane Street, New York 7, N. Y. BEekman 3-4010
 Jerry Finkelstein, Consulting Publisher
 Maxwell Lehman, Editor
 H. J. Bernard, Executive Editor N. H. Mager, Business Manager
 10c Per Copy. Subscription Price \$1.37½ to members of the Civil Service Employees Association. \$3.00 to non-members.

TUESDAY, AUGUST 10, 1954



Donald L. Brush of Herkimer, counsel to the State Department of Agriculture and Markets from 1943 to 1953, received a Doctor of Law degree from his alma mater, Hope College of Holland, Mich. Mr. Brush until recently served as County Judge of Herkimer and was Children's Court Judge prior to his State service. He has been a member of the Civil Service Employees Association for years.



Dr. Herman B. Snow, new director of St. Lawrence State Hospital, and Mrs. Snow, at a reception in their honor. Three hundred hospital employees attended.

Comment

2½-CENTS-AN-HOUR RAISE CALLED TOO LOW

Editor, The LEADER:
 In the July 20 LEADER you printed my comment on the 2½-cent an hour raise for typists, clerks and file clerks. New York State service was meant.
 ACCOUNT CLERK
 Bay Shore, N. Y.

AWARDS FOR IDEAS CALLED STIMULATING

Editor, The LEADER:
 Civil service employees in general may be dismayed at the sad state of present salaries, but they applaud the ever-expanding cash awards for suggestions to improve governmental efficiency and to save public funds. In this area, at least, government recognizes the value of alert, intelligent employees interested in the public welfare. Cash prizes, citations and commendations stimulate morale.
 R. D. MACELLIS
 Far Rockaway, N. Y.

LIGHT SLEEPER LAUDS FIREMEN ON JOB

Editor, The LEADER:
 New Yorkers certainly know their Fire Department is on the job when the engines clang down quiet residential streets in the wee hours of the morning. But we wouldn't be without them for the world.
 LIGHT SLEEPER
 Brooklyn, N. Y.

HOUSING AUTHORITY OFFICES AS MODEL

Editor, The LEADER:
 The handsome new offices of the NYC Housing Authority should encourage other government agencies to brighten up their sometimes antiquated working quarters.
 L. B.
 Brooklyn, N. Y.

QUERY ABOUT HUDSON RIVER HOSPITAL

Editor, The LEADER:
 Why doesn't Hudson River State Hospital have supervising attendants, like other State Hospitals?
 ATTENDANT
 Poughkeepsie, N. Y.

NEWS Letter

WITH CONGRESS much interested in early adjournment, the likely result on Federal pay sizes up this way, provided Congress acts fast:

Classified employees, 5 per cent raise, \$170 minimum, \$400 maximum.

Postal employees, 5 per cent raise, \$200 minimum, \$400 maximum. The danger of the whole pay raise project falling through still exists.

THE BILL APPROVED by the Senate-House conference committee, to authorize the Federal government to attach the salaries of its employees for unpaid U. S. income tax, doesn't run wild. Even now a government employee may be compelled by his own agency to pay the amount, even may be fired for non-payment. Any employee fired for that reason may wish a lien had been imposed on his salary, instead.

The bill to permit creditors in general to garnishee Federal pay is dead.

THE NUMBER OF NYC provisionals in jobs required to be filled permanently was 9,102, as of August 1, an increase of 238.

The Citizens Budget Commission hopes the number will be reduced, especially as it finds 516 provisionals have been serving for from five to 10 years, 73 for more than 10 years, and 1,727 between five and 10 years. The law allows nine months. The CBC admits substantial decrease in the number of provisionals in recent years, does not object to a law increasing the allowable time limit to a more practical figure. What is mainly necessary is a large enough staff in the Department of Personnel to conduct the exams that will produce the eligibles to replace the provisionals, and pay high enough to induce eligibles to accept. Certainly the departments that have been harboring the same provisionals for 10 years must be hard up for an explanation.

PERFORMANCE BUDGETS are getting much attention from governments. The Hoover Commission recommended the method, which is based on the quantity and type of work, rather than on number of employees and type of equipment required. New York State has performance budget aspects, on a trial basis; NYC says it has, but is hard-pressed to prove it. Los Angeles has installed a full performance budget, reports it's working well.

UNSIGNED COMMUNICATIONS from the White House to department heads, that asked that jobs paying \$9,600 or more be cleared through the Republican National Committee, do not apply to those jobs under civil service regulations, an explanatory note from the same source points out. The modification resulted from the howl raised over the first communication. But patronage letters are going forth from the Republican National Committee, just the same, in the former vein. The New York County Committee is reported to have received one.

TECHNICALLY, the NYC Department of Personnel and the City Civil Service Commission are operating without a set of Rules.

Speed Is Urgent for New Police Test in NYC

THOUGH recruitment for patrolman (P.D.) jobs in NYC is expected to improve, with the salary increase that went into effect on July 1, and Mayor Robert F. Wagner's intimation there may be an additional raise, and the current patrolman exam nearing its end, the City Civil Service Commission should get the new exam under way fast.

Necessity for long-range planning, to avoid past debacles, impels the Commission to have thousands of prospective eligibles in reserve. The new list, to be announced in October or November, will contain only about 4,000 names. Possibly half that number will be appointed speedily, as a start toward increasing the police force by 7,000. How Budget Director Abraham D. Beame can squeeze the money out of the present tight budget for anything like 2,000 police jobs nobody yet knows, not even himself, but he's trying hard to find out.

The Commission should order the new exam at its meeting this week and approve the notice of examination, or advertisement, which contains the requirements, sending it by fast-footed messenger to the Budget Director's office for approval. It would get that approval fast, for there is nothing controversial about a new patrolman test. The requirements, also, are standard, some of them even statutory. Applications should be received during two months, November and December. Of particular value is December, when prospective college graduates will be home for the holidays.

Personnel Director Joseph Schechter has promised that the Personnel Department will act speedily to cope with the needs of the Police Department for patrolmen. Speedy ordering of the test, and approval of requirements, would be right in line with his prompt and aggressive policy.

Early Stoppage Sought On Withholding for Tax on Meals, Lodgings

ALBANY, Aug. 9—John T. De Graff, counseled to the Civil Service Employees Association, has offered the full cooperation of the Association in efforts to put into effect as soon as possible the end of withholding for U.S. income tax purposes value of meals and lodgings, as a new law would exempt them from taxation. The employee living in a State or local government institution as condition of employment would pay no tax on lodging, while the value of all meals eaten on such premises, without restriction, are to be deductible. The law would be retroactive to January 1, 1954; so some employees will be entitled to a refund, as soon as President Eisenhower signs the bill.

Mr. DeGraff suggested to Comptroller J. Raymond McGov-

ern the calling of a conference of the Departments of Mental Hygiene, Correction, Health, Social Welfare and Education, and any other departments he finds affected, and offered them the co-operation of the CSEA.

The U. S. Commissioner of Internal Revenue is expected to issue regulations under the new law.

Deputy Commissioner Mortimer M. Kassell, State Department of Taxation and Finance, as special counsel to the Association, handled a CSEA test case, still in the Federal courts, to have the taxation of meals and lodging held unwarranted under the law, though sanctioned by a Treasury Department ruling. The case is still in court. Refunds for periods prior to 1948 to December 30, 1954 are sought.

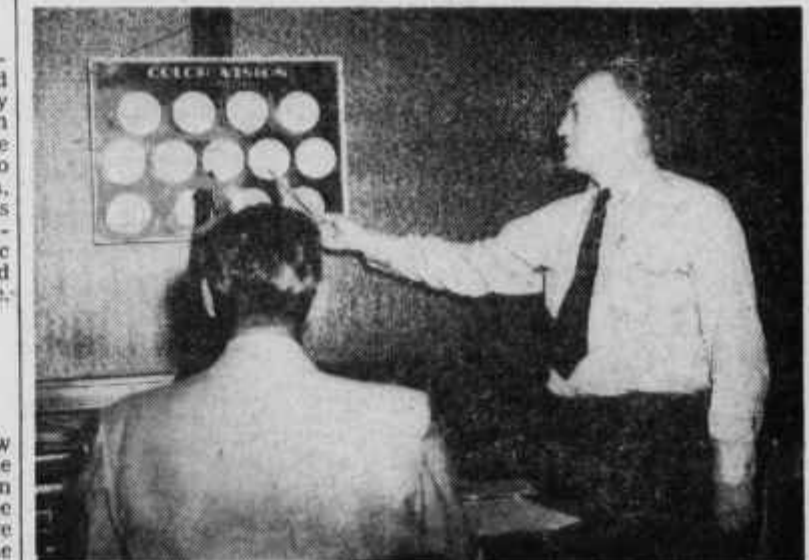
Question, Please

WHAT IS the difference between Schedule A, B, and C jobs in U. S. service? E. L.

Answer—The majority of jobs are filled through open-competitive civil service exams, by promotion or reassignment of persons already employed in Government, or by appointment of former employees. These jobs are in the competitive service. But appointments may be made to some jobs without requiring the appointee to pass an open-competitive

exam. Among them are jobs excepted from the competitive service by placing them in Schedule A, B, or C. No exam is required for appointment to a Schedule A or C job, and only a non-competitive exam is given for Schedule B positions. Positions are excepted from the competitive service principally because they are confidential or policy-making or because it is impractical to make appointments through open-competitive exams.

Winner of \$100 Award Gets \$200 Extra as Trial Proves Idea's Value



Thomas Donohue, motor vehicle license examiner in the Albany offices of the Motor Vehicle Bureau, points to a vision chart in examining a candidate for a driver's license. Mr. Donohue received \$300 from the State Employees Merit Award Board.

ALBANY, Aug. 9 — Chairman Frank L. Tolman of the New York State Employees' Merit Award Board announced that the Board has granted an additional \$200 to Thomas Donohue, for a suggestion that already gained him an award of \$100 and a Certificate of Merit.

Mr. Donohue, a motor vehicle license examiner in the Albany Office of the Motor Vehicle Bureau, had submitted to the Board proposals to reduce the number of failures of applicants to appear for motor vehicle license exams.

Daily failure proves costly in time, money, and reduced efficiency in the Motor Vehicle Bureau's operations.

When the Bureau last year announced the decision to try out Mr. Donohue's proposals the Board voted him the \$100 and Certificate and deferred consideration of his full award until after the trial period. The latest action followed upon the Board's findings that his proposals had effected substantial savings; examiners can keep closer schedules and non-appearances are fewer.

TB, Armory, Other State Pay to Be Set

ALBANY Aug. 9—The study and adjustment of the pay of 76,000 State jobs has been virtually completed. J. Earl Kelly, director of Classification and Compensation in the State Department of Civil Service, announced. The results have been made public in a 56-page report.

The statewide adjustment means a raise in pay for 97 per cent of the State's positions, Mr. Kelly said, adding that 47,000 or 61.5 per cent will be raised from five to ten per cent.

Another 24,000 positions, comprising 31.3 per cent of the total, will be raised less than five per cent, he said; a third group, of 3,700 positions are slated for raises of more than 10 per cent.

Retroactive to April 1

A group of 1,700 jobs, or 2.2 per cent of the total, have been assigned lower pay ranges. Employees now in these jobs, Mr. Kelly explained, are protected against pay cuts, and permanent employees will be advanced to the top of their old grade by annual increments as earned, if the new top pay is lower than the old maximum. The new lower rates for this group apply only to new appointees.

All the percentage comparisons are between the old and new maximum salaries for each title, he stated, and do not take into account the longevity increment employees will get after five years of satisfactory service at the normal maximum pay grade.

The actual installation of the new salary schedule is slated for October 1, the new salaries to be effective as of April 1, 1954.

Determinations are still to be made on jobs with duties that involve the hazard of tuberculosis, and on a small group of other State jobs.

The 76,000 positions are allocated to standard State pay grades. Positions not coming under the jurisdiction of the study include all unallocated positions such as those of State Police, State Armory employees, State University faculty members, and employees of the legislative and judicial branches of the State government. This excepted group totals about 10,000 jobs. The problem of salary adjustments for these positions is under study by the Director of the Budget who is expected to announce his determinations soon.

Comment by Kelly

"The salary study was ordered a year ago by Governor Dewey to eliminate inequities in State salaries," Mr. Kelly said. "These inequities were in part the result of several previous statewide cost-of-living adjustments. Since these pay raises were staggered on a percentage basis to give relief where it was needed most, the balance from grade to grade in the old salary scale was upset."

Mr. Kelly asserted that completion of the study brings to a conclusion the overall salary improvement project which has resulted in the following:

- Freezing of emergency compensation, previously granted on a temporary basis, into base pay.
 - Adoption of a flexible, systematic, and shorter salary schedule which will be more useful both on a day-to-day administrative basis and for long-range planning. (The new pay schedule has 38 grades instead of the former 55 grades.)
 - Addition of the longevity increment.
 - Through allocation of positions to the new salary plan, elimination of inequities within the State service and establishment of a reasonable degree of adjustment with salaries paid outside the State service for comparable work.
- Among the titles for which the grades were announced by the State are the following, in which the first number gives the old grade, the second the new. For money values, consult the tables on Pages 8 and 9.
- Senior Disability Benefits Examiner, 16, 14.
 - Senior Draftsman, 10, 11.
 - Senior Economic Research Editor, 20, 18.
 - Senior Economic Research Librarian, 20, 18.
 - Senior Economist, 20, 18.
 - Senior Editorial Clerk, 6, 7.
 - Senior Electric Engineer, 25, 23.
 - Senior Electric Inspector, 11, 18.
 - Senior Electronics Laboratory Engineer, 25, 23.
 - Senior Electronics Technician, 18, 13.
 - Senior Employment Consultant, 26, 21.

Real estate buys. See P. 11.

- Senior Employment Interviewer, 17, 16.
- Senior Employment Manager, 23, 21.
- Senior Employment Security Manager, 23, 21.
- Senior Engineering Aide, 10, 11.
- Senior Engineering Examiner, 20, 19.
- Senior Engineering Geologist, 25, 23.
- Senior Engrossing Clerk, 7, 7.
- Senior Estate Tax Examiner, 20, 17.
- Senior Examiner of Methods and Procedures, 20, 18.
- Senior Examiner of Municipal Affairs, 20, 18.
- Senior Examiner of State Payrolls, 14, 14.
- Senior Executive Telephone Clerk, 10, 11.
- Senior Factory Inspector, 19, 15.
- Senior Farm Placement Representative, 14, 16.
- Senior Farm Products Inspector, 16, 15.
- Senior File Clerk, 6, 7.
- Senior Fingerprint Clerk, 6, 8.
- Senior Fish Pathologist, 20, 18.
- Senior Food Bacteriologist, 20, 18.
- Senior Food Chemist, 20, 18.
- Senior Foreign Trade Consultant, 25, 23.
- Senior Gas Engineer, 25, 23.
- Senior General Office Engineer, 25, 23.
- Senior Grade Separation Engineer, 25, 23.
- Senior Hardware Specifications Writer, 25, 23.
- Senior Heating and Ventilating Engineer, 25, 23.
- Senior Historian, 25, 22.
- Senior Home Economist, 20, 18.
- Senior Horticultural Inspector, 16, 15.
- Senior Housefather, 8, 10.
- Senior Housemother, 8, 10.
- Senior Housing Management Inspector, 28, 24.
- Senior Hydraulic Engineer, 25, 23.
- Senior Hydro-electric Operator, 11, 12.
- Senior Identification Officer, 10, 10.
- Senior Income Tax Examiner, 18, 17.
- Senior Industrial Codes Engineer, 25, 23.
- Senior Industrial Consultant, 25, 22.
- Senior Industrial Engineer, 25, 23.
- Senior Industrial Hygiene Engineer, 25, 23.
- Senior Industrial Hygiene Physician, 28, 25.
- Senior Industrial Investigator, 15, 15.
- Senior Inspector of Motor Vehicle Licensing Operations, 15, 14.
- Senior Inspector of Penal Institutions, 20, 18.
- Senior Inspector of Weights and Measures, 16, 15.
- Senior Insurance Examiner, 25, 23.
- Senior Insurance Field Investigator, 25, 21.
- Senior Insurance Fund District Manager, 34, 28.
- Senior Insurance Policy Examiner, 25, 23.
- Senior Insurance Qualifications Examiner, 25, 23.
- Senior Insurance Sales Representative, 22, 19.
- Senior Investigator, 19, 17.
- Senior Key Punch Operator, 6, 7.
- Senior Labor Relations Examiner, 25, 22.
- Senior Laboratory Animal Caretaker, 7, 8.
- Senior Laboratory Secretary, 10, 11.
- Senior Laboratory Technician, 8, 9.
- Senior Laboratory Worker, 7, 8.
- Senior Land and Claims Adjuster, 27, 23.
- Senior Landscape Architect, 25, 23.
- Senior Launderer, 4, 6.
- Senior Law Clerk, 7, 8.
- Senior Law Department Investigator, 25, 19.
- Senior Librarian, 20, 18.
- Senior Library Supervisor, 20, 19.
- Senior License Investigator, 19, 17.
- Senior Local Assessment Examiner, 20, 16.
- Senior Locomotive Inspector, 14, 13.
- Senior Mail and Supply Clerk, 6, 7.
- Senior Maintenance Supervisor, 16, 16.
- Senior Market Reporter, 19, 17.
- Senior Marketing Cooperatives Specialist, 20, 18.
- Senior Marketing Facilities Specialist, 20, 18.
- Senior Marketing License Inspector, 16, 14.
- Senior Meat Inspector, 16, 15.
- Senior Mechanical Construction Engineer, 25, 23.

- Senior Mechanical Engineer, 25, 23.
- Senior Mechanical Estimator, 25, 23.
- Senior Mechanical Specifications Writer, 25, 23.
- Senior Mechanical Stores Clerk, 7, 8.
- Senior Medical Bacteriologist, 28, 25.
- Senior Medical Biochemist, 28, 25.
- Senior Medical Records Librarian, 14, 14.
- Senior Medical Technician, 9, 11.
- Senior Mental Health Consultant, 20, 18.
- Senior Milk Accounts Examiner, 20, 18.
- Senior Milk and Food Inspector, 16, 15.
- Senior Mine and Tunnel Inspector, 19, 16.
- Senior Mortgage Tax Examiner, 25, 17.
- Senior Municipal Research Assistant, 20, 18.
- Senior Museum Technician, 14, 14.
- Senior Nutritionist, 20, 18.
- Senior Occupational Therapist, 15, 15.
- Senior Office Machine Operator, 6, 7; Excludes the following, to be reclassified as shown: Senior OMO (Billing) G-6 to Senior Billing Machine Operator R-8; Senior OMO (Bookkeeping) G-6 to Senior Bookkeeping Machine Operator R-8; Senior OMO (Key Punch) G-6 to Senior Key Punch Operator R-7; Senior OMO (Offset Printing) G-5 to Senior Offset Printing Machine Operator R-8; Senior OMO (Printing) G-6 to Senior Printing Machine Operator R-8; Senior OMO (Tabulating) G-7 to Senior Tabulating Machine Operator R-8.
- Senior Offset Printing Machine Operator, 6, 8.
- Senior Parl-Mutuel Examiner, 17, 17.
- Senior Park Engineer, 25, 23.
- Senior Park Superintendent, 11, 12.
- Senior Parole Officer, 20, 18.
- Senior Pathologist, 28, 25.
- Senior Payroll Auditor, 15, 14.
- Senior Personnel Administrator, 20, 18.
- Senior Personnel Technician, 20, 18.
- Senior Pharmacist, 20, 17.
- Senior Pharmacy Inspector, 19, 18.
- Senior Photofluorographer, 10, 11.
- Senior Photographer, 15, 13.
- Senior Physical Chemist, 20, 18.
- Senior Physical Therapy Technician, 10, 11.
- Senior Physician, 28, 25.
- Senior Planning Delinquent, 25, 22.
- Senior Planning Technician, 19, 18.
- Senior Plumbing Engineer, 25, 23.
- Senior Printing Machine Operator, 6, 8.
- Senior Psychiatrist, 28, 25.
- Senior Public Health Dentist, 25, 23.
- Senior Public Health Educator, 20, 18.
- Senior Public Health Nutritionist, 20, 18.
- Senior Public Health Physician, 28, 25.
- Senior Public Records Analyst, 20, 18.
- Senior Publicity Agent, 20, 18.
- Senior Publicity Editor, 25, 22.
- Senior Purchase Specifications Writer, 27, 23.
- Senior Purchasing Agent, 27, 23.
- Senior Railroad Engineer, 25, 23.
- Senior Railroad Equipment Inspector, 19, 17.
- Senior Rates Examiner, 17, 16.
- Senior Real Estate Appraiser, 25, 23.
- Senior Rehabilitation Counselor, 20, 18.
- Senior Rehabilitation Interviewer, 14, 13.
- Senior Rent Accountant, 18, 16.
- Senior Rent Examiner, 18, 16.
- Senior Rent Inspector, 14, 13.
- Senior Research Analyst, 25, 23.
- Senior Research Scientist, 28, 24.
- Senior Safety Service Representative, 15, 15.
- Senior Sanitary Engineer, 25, 23.
- Senior Sanitary Chemist, 20, 18.
- Senior Scientist, 25, 22.
- Senior Sewage Plant Operator, 8, 9.
- Senior Social Worker, 15, 15; Applies only to those now allocated to G-15. Senior Social Worker (Youth Parole) G-17 is to be reclassified to Senior Youth Parole Worker, a new title, at R-15.
- Senior Sociologist, 20, 18.
- Senior Soils Engineer, 25, 23.
- Senior Special Tax Investigator, 21, 19.

- Senior State Accounts Auditor, 20, 18.
- Senior State Veteran Counselor, 25, 20.
- Senior Stationary Engineer, 13, 13.
- Senior Statistician, 22, 18.
- Senior Statistics Clerk, 7, 8.
- Senior Stenographer, 6, 8.
- Senior Stock Transfer Tax Examiner, 17, 17.
- Senior Stores Clerk, 7, 8.
- Senior Superintendent of Construction, 20, 19.
- Senior Tabulating Machine Operator, 7, 8.
- Senior Tax Administrative Supervisor, 31, 26.
- Senior Tax Collector, 14, 14.
- Senior Tax Valuation Engineer, 25, 23.
- Senior Telephone Engineer, 25, 23.
- Senior Telephone Inspector, 15, 14.
- Senior Telephone Operator, 6, 7.
- Senior Training Technician, 20, 18.
- Senior Trial Attorney, 28, 25.
- Senior Truck Mileage Tax Examiner, 17, 17.
- Senior Truck Weigher, 7, 8.
- Senior Tuberculosis Physician, 28, 25.
- Senior Typewriter Repairman, 11, 11.
- Senior Typist, 6, 7.
- Senior Underwriter, 18, 16.
- Senior Unemployment Insurance Claims Examiner, 18, 16.
- Senior Unemployment Insurance Hearing Representative, 20, 16.
- Senior Unemployment Insurance Manager, 23, 21.
- Senior Unemployment Insurance Referee, 28, 24; The position now in this title is to be reclassified to Supervising Unemployment Insurance Referee, a new title at R-25. Senior Unemployment Insurance Referee R-24 title is to be used for two positions to be reclassified from the present title of Unemployment Insurance Referee (Administrative) G-25.
- Senior Unemployment Insurance Reviewing Examiner, 18, 16.
- Senior Utility Rates Analyst, 20, 18.
- Senior Valuation Engineer, 25, 23.
- Senior Welfare Consultant, 20, 18.
- Senior X-Ray Technician, 10, 11.
- Senior Youth Parole Worker, 17, 15.
- Sergeant, 15, 14.
- Sergeant, Park Patrol, 15, 14.
- Sewage Plant Operator, 5, 6.
- Sewing Machine Adjuster, 11, 11.
- Sheet Metal Worker, 8, 10.
- Ship's Deck Officer, 11, 11.
- Ship's Electrician, 9, 11.
- Ship's Engineer, 16, 16.
- Shoemaker, 5, 7.
- Sign Painter, 9, 10.
- Sign Shop Foreman, 11, 12.
- Sign Shop Worker, 5, 7.
- Social Work Apprentice, 4, 5.
- Social Worker, 10, 11; Applies only to those now allocated to G-10. Social Worker (Youth Parole) G-12 is to be reclassified to Youth Parole Worker, a new title at R-12.
- Special Agent, Department of Mental Hygiene, 17, 15.
- Special Field Investigator, 14, 13.
- Speech Correction Assistant, 9, 10.
- Staff Attendant, 4, 6.
- Staff Nurse, 7, 8.
- State Fair Business Manager, 25, 22.
- State Laboratory Administrator, 25, 22.
- State Laboratory Librarian, 20, 18.
- State Librarian, 39, 31.
- State Museum Guide, 6, 6.
- State Veteran Counselor, 20, 17.
- Stationary Engineer, 9, 11.
- Statistician, 17, 14.
- Statistics Clerk, 2, 3.
- Steam Fireman, 5, 7.
- Steel Fabricator, 9, 11.
- Stenographer, 2, 4.
- Stock Transfer Tax Examiner, 14, 14.
- Stores Clerk, 2, 3.
- Student Nurse Housemother, 4, 5.
- Superintendent of Camps and Trails, 25, 23.
- Superintendent of Farm Placement, 28, 24.
- Superintendent of Fish Culture, 25, 20.
- Superintendent of Forest Fire Control, 25, 23.
- Superintendent of Forest Investigations, 25, 23.
- Superintendent of Forest Pest Control, 25, 20.
- Superintendent of Game Farms, 25, 20.
- Superintendent of Hydro-electric Plants, 25, 21.
- Superintendent of Jones Beach State Park, 33, 27.

- Superintendent of Land Acquisition, 25, 20.
- Superintendent of Long Island Parks, 39, 30.
- Superintendent of Marine Fisheries, 25, 20.
- Superintendent of State Forests, 25, 23.
- Superintendent of Thomas Indian School, 30, 25.
- Superintendent of Training School, 40, 32.
- Superintendent of Tree Nurseries, 25, 20.
- Superintendent of Veterans' Rest Camp, 39, 31.
- Superintendent of Women's Relief Corps Home, 28, 25.
- Supervising Apprentice Training Representative, 25, 22.
- Supervising Attendant, 6, 10.
- Supervising Bank Examiner, 41, 31.
- Supervising Bedding Inspector, 20, 19.
- Supervising Beverage Control Investigator, 20, 18.
- Supervising Boiler Inspector, 23, 20.
- Supervising Boxing Inspector, 17, 14.
- Supervising Chauffeur, 10, 11.
- Supervising Child Guidance Clinic Worker, 14, 13.
- Supervising Commodities Tax Examiner, 21, 20.
- Supervising Construction Safety Inspector, 23, 20.
- Supervising Construction Wage Rate Investigator, 20, 18.
- Supervising Corporation Tax Examiner, 23, 20.
- Supervising Dietitian, 15, 14.
- Supervising District Fisheries Manager, 20, 21.
- Supervising District Forest Ranger, 20, 18.
- Supervising District Game Manager, 20, 21.
- Supervising Estate Tax Examiner, 25, 20.
- Supervising Factory Inspector, 23, 19.
- Supervising Farm Products Inspector, 20, 18.
- Supervising Forester, 20, 18.
- Supervising Housekeeper, 6, 8.
- Supervising Income Tax Examiner, 23, 20.
- Supervising Industrial Investigator, 20, 19.
- Supervising Inspector of Welfare Institutions, 20, 18.
- Supervising Insurance Examiner, 42, 31.
- Supervising Janitor, 6, 8.
- Supervising Labor Mediator, 33, 28.
- Supervising Laboratory Caretaker, 4, 8.
- Supervising License Inspector, 20, 17.
- Supervising Market Reporter, 23, 20.
- Supervising Master Mechanic, 24, 21.
- Supervising Matron, 13, 14.
- Supervising Milk Inspector, 25, 18.
- Supervising Mine and Tunnel Inspector, 23, 20.
- Supervising Motion Picture Inspector, 22, 14.
- Supervising Motor Carrier Investigator, 17, 15.
- Supervising Motor Carrier Referee, 28, 25.
- Supervising Motor Vehicle Inspector, 19, 17.
- Supervising Motor Vehicle License Examiner, 15, 15.
- Supervising Motor Vehicle Referee, 28, 25.
- Supervising Nurse, 12, 13.
- Supervising Pari-Mutuel Examiner, 21, 20.
- Supervising Park Ranger, 13, 12.
- Supervising Payroll Examiner, 28, 25.
- Supervising Physical Therapist, 14, 15.
- Supervising Psychiatrist, 34, 29.
- Supervising Public Health Dental Hygienist, 12, 12.
- Supervising Public Health Educator, 25, 22.
- Supervising Railroad Equipment Inspector, 19, 17.
- Supervising Rent Accountant, 21, 18.
- Supervising Seamstress, 4, 6.
- Supervising Special Agent, Department of Mental Hygiene, 20, 18.
- Supervising Stock Transfer Tax Examiner, 21, 20.
- Supervising Tailor, 6, 9.
- Supervising Transportation Service Inspector, 17, 15.
- Supervising Trial Examiner, 34, 27.
- Supervising Truck Mileage Tax Examiner, 21, 20.
- Supervising Truck Weigher, 18, 13.
- Supervising Tuberculosis Physician, 34, 29.
- Supervising Tuberculosis Roentgenologist, 34, 29.
- Supervising Unemployment Insurance Hearing Representative, 25, 21.
- Supervising Unemployment Insurance Investigator, 28, 24.

(Continued on Page 13)



REAL ESTATE



HOUSES — HOMES — PROPERTIES

THE BEST GIFT OF ALL — YOUR OWN HOME

LONG ISLAND

LONG ISLAND

LONG ISLAND

LONG ISLAND

INTER-RACIAL

HEMPSTEAD BRICK BUNGALOWS
Are you looking for suburban living pleasures and urban conveniences, paved winding streets, modern schools, N. Y. Dept. Store branches, recreational facilities to name a few. We have available in one of the most progressive communities on Long Island, many modern 4, 5, and 6-room bungalows, ranging from \$11,500 and up.
One of the largest selections of new and resale Cape Cod Split Level and Ranch homes anywhere on Long Island.
WM. URQUHART, JR.
83 Grove St., Hempstead
Ivanhoe 3-8515
Southern State Pkwy. to Exit "19"
Left to 2nd Traffic Light

SPRINGFIELD GARDENS
G. I. \$1,000 Cash
1 family, 6 modern rooms, detached plot, oil heat, garage. Clean throughout.
\$11,250

ST. ALBANS
G. I. \$1,200 Cash
6 large rooms on 40x100 plot, tile bath, modern kitchen, 2-car garage. Excellent location.
\$11,990

TOWN REALTY
186-11 Merrick Blvd.
Springfield Gardens, L. I.
Laurelton 7-2500-2501

BUY NOW
MOVE RIGHT IN
JAMAICA
2 family, full basement, two apts., modern tile baths, oil, 2 car garage. Near subway and all conveniences. Good solid buy and money maker. Asking **\$14,000**
EAST ELMHURST
Large beautiful 1 family stucco with the last word in modern building. Many extras, lovely neighborhood. See it now.
\$12,990
Terms of Course. MANY GOOD BUYS. Jamaica St. Albans, So. Ozone Park
CALL JA 6-0250
The Goodwill Realty Co.
WM. RICH
Lic. Broker Real Estate
108-12 New York Blvd., Jamaica, N.Y.

Kitchens & Bathrooms MODERNIZED
for only pennies a day
NO DOWN PAYMENTS
PMA Terms Huge Selection of 5 Yrs. to Pay Unpainted Cabinets
FREE ESTIMATES
Call AXtel 7-8585, or visit our showrooms.
Atlantic-Craft Products
147-30 Archer Ave., Jamaica 35, N. Y. (1 block from LIRR Station, just off Sutphin Blvd., Jamaica Ave.) Open Daily to 5:30 P.M., Mon., Fri. to 9 P.M. Sat. to 1 P.M. FREE PARKING
Screens, Storm Windows
• Aluminum Windows and Doors
• Screens Rewired
• Venetian Blinds • Jalousies
• Shower Doors
• Bath Tub Enclosures
BO. 3-3509
Continental Screen Co.
90-05 70th Ave., Forest Hills
Real estate buys. See P. 11.

GET RICH QUICK
Own Your Own Home
THIS WEEK'S SPECIALS
ROCKAWAY
5 room brick bungalow with expansion attic. House 2½ years old. Plot 55x100, oil heat. Sacrifice Sale.
\$11,500
HOLLIS CHAPPELLE GARDENS
Two-Family brick, semi-detached, 5 rooms down and 3 rooms up, modern baths, kitchens and Frigidaires, parquet floors, oil heat, 1-car garage. excellent community, near all facilities. Price:
\$12,999

ADDISLEIGH PARK
Six-Room brick, 1-car garage. oil heat, completely finished knotty pine basement with lavatory, kitchen and bar, plot 40 x 100. Price:
\$12,500

ST. ALBANS
All BRICK, ranch hme of 6 nice rooms, large plot 50x100. Only 4 years old, modern, clean and up-to-date, all you would want in a home.
\$13,999

Chappelle Gardens
10 ROOMS
Built of beautiful stucco, a mansion of 10 rooms with 3 baths, large plot, finished basement, oil, modern and immaculate condition.
F.H.A. & G.I. MORTGAGES ARRANGED
For every type home call
Arthur Watts, Jr.
112-02 175 Place, St. Albans
OL 8-0105
9 AM to 7 PM Sun. 11-6 PM

ST. ALBANS \$14,990
7 rooms, brick bungalow, plus finished basement, oil heat, garage, enclosed patio, 1½ baths and many, many extras.

BAISLEY PARK \$8,990
Lovely 5 room detached house, side hall entrance. Combination windows, steam heat and garage.
G. I. \$490 DOWN

ST. ALBANS \$10,500
6 rooms and porch, steam heat. Excellent location. Many extras.
G. I. \$500 DOWN
A large selection of other choice homes in all price ranges

OPEN 7 DAYS A WEEK
Mortgages and Terms Arranged
DIPPEL
115 - 43 Sutphin Blvd.
(Corner 115th Drive)
Olympic 9-8561

BAISLEY PARK
5 Room Bungalow
40 x 100 Plot
3 bedrooms, living room dinette and kitchen, only 7 years old
\$12,500 (terms)

JAMAICA
3 family, brick attached, 8 rooms and bath, first floor, 6 rooms and bath, second floor, paying \$85.00 monthly, oil, steam heat, convenient to transportation. Asking \$11,500 with terms.

J. W. STEWART
Hugo R. Heydorn
Realty Co.
JA. 6-0787 AX.7-6359

LOOKING INSIDE, news and views by H. J. Bernard, appears weekly in The LEADER. Don't miss it.

JAMAICA \$9,850
Completely Detached
6 ROOM HOME
FINISHED BASEMENT
No Cash GI
Can be used for 2 FAMILY
Owner is sacrificing beautiful detached home which is in immaculate condition and set back on large landscaped grounds. There are 6 large rooms and a finished basement with an extra kitchen and stall shower. Oil heat and many extras. Only one block from subway bus.
SEE THIS BARGAIN TODAY
HOLIDAY
'The Real Estate Super Market!!!'
147-05 Hillside Ave., Jam.
JA. 6-4034
OPEN 7 DAYS A WEEK
8th Ave. Subway "M" Train
To Sulphur Blvd. Station
North Exit

MERRICK PK. \$12,750
3 family
Detached, 10 rooms, 1-4 room apt. and 2-3's. Oil heat. Other features. Small cash.

ST. ALBANS
2 family
Solid brick, detached, 4 rooms, 2-4½ room apts., modern colored tile bath and kitchen. Lot 40 x 100, 2 car garage. Finished basement and all modern improvements. Inspect and make offer.

ST. ALBANS
1 family
8 rooms, 3 modern tile baths, finished basement and loads of extras. Inspect and make offer.

JAMAICA \$11,500
2 family, 11 rooms. Solid brick attached. Wall-to-wall carpeting. Near schools and all transportation. Cash down \$3,000.
MANY OTHERS TO CHOOSE FROM
MALCOLM BROKERAGE
106-57 New York Blvd.
Jamaica 5, N. Y.
RE. 9-0645 — JA. 3-2716

NEW HOMES
ST. ALBANS
3 Bedrooms - 2 Story
These are brand new homes with every luxury and every modern improvements. The latest in construction and materials, with stall showers and laundry room—everything.
\$13,060
Low Down Payments for Vets and Non-Vets
ST. ALBANS
6½ rooms, brick, garage, oil heat, modern kitchen, colored tile bath with stall shower, real fireplace, extra large living room.
\$12,200

Lovely Long Island Homes at Prices to suit in the most desirable sections
NEW LISTINGS DAILY
Of One and Two Family Houses
LEE ROY SMITH
114-04 Merrick Blvd. Jamaica, L.I.
Jamaica 4-4592 LAurelton 7-6855

PHOTO IDEA WINS \$75
Detective William Cicio, assigned to the Photographic Bureau, NYC Police Department, received a certificate and \$75 for a suggestion expected to save \$2,000 a year on the administrative filing of outdated photographs.

NO CASH for Vets
S. OZONE PARK \$8,900
No Cash for G.I.
Detached Colonial
5 rooms, oil steam, full basement, 40 x 100, garage. No. 344.
\$13,500
Solid Brick
7½ rooms, 4 bedrooms, oil heat, over sized garage, 3 years old. (No. 347.)
No Cash for G.I.
DETACHED BRICK RANCH
5½ rooms — 3 bedrooms — 40 x 100
3 Years Old
(No. 364)
REDUCED TO \$14,000
NO CASH FOR G. I.
All Homes Available on Essex Layaway Plan

ESSEX
88-32 138th STREET, JAMAICA
100 feet North of Jamaica Ave. on Van White Blvd. — Call for detail driving directions. Open everyday.
AX. 7-7900

NOW READY!!
BRAND NEW HOMES
See the new all modern brick, 1 family, 6 room homes, full basements, ceramic tiled bath, ultra modern kitchen, formica top cabinets, casement windows, automatic heat, extra lavatory on main floor, Venetian blinds, laundry in basement, four burner gas range, landscaped plot with parking area.
Price \$13,060
Veterans—Down Payment \$1,960
Mortgage (at 4½% for 25 years)
Monthly Payment of Principal and Interest \$61.15
Located at East Side of 171st Street, between Foch Boulevard and 116th Avenue, St. Albans, New York.
Office: **HERMAN CAMPBELL**
33-21 Junction Boulevard, Jackson Heights 72, New York.
HAVemeyer 6-1151 — Hickory 6-3672
Moderate down payment for non-veterans

OUTSTANDING VALUES
HOLLIS-CHAPPELLE GARDENS: Detached brick bungalow with income, 5-room apartment 1st floor; 5-room apartment 2nd floor; finished basement, private entrance. A-1 condition. Excellent community. Price..... **\$18,500**
ST. ALBANS: Beautiful brick bungalow, detached, 7-rooms, (4-bedrooms), 2-modern baths, rear porch, 2-rooms and kitchenette upstairs, garage, excellent transportation. **\$14,800**
Price

OTHER 1 AND 2 FAMILY HOUSES FROM \$7,500 UP
— LOW DOWN PAYMENTS —
MORTGAGES ARRANGED
ALLEN & EDWARDS
149-18 Liberty Ave., Jamaica, N. Y. OLYMPIA 8-2014—8-2015

BROOKLYN MANSION
Corner mansion, 20 rooms, 7 bathrooms, push button elevator, brick and stone, oil, parquet. An excellent house, well located.
ACT NOW — CALL PR 4-6611

Chance Of A Lifetime
ST. ALBANS \$9,500
Gorgeous, detached, 6 room home, lovely neighborhood, automatic heat, garage, many extras.
Many others to choose from to satisfy your taste.
OL 7-1635 — SCOTT

NYC POLICE FORCE ISSUES 'SELF PORTRAIT'
The NYC Police Department released a 60-page booklet entitled "Self Portrait" that describes the operations of the department, its functions and specialized units.
Address requests for a copy to the Office of Community Relations, NYC Police Department, Room 211, at 240 Centre Street, New York 13, N. Y.

CARD PARTY TO BE HELD
The St. Gabriel Mission Circle will conduct a card party on Friday evening, October 22, at 32 East 32nd Street, NYC. The proceeds will be given to the Rev. Vincent Lyons, a Columban Father in the Philippines, to help rebuild the parish church.
Information may be obtained from Mrs. Charles Lane, of Woodhaven, an employee of the State Credit Union.

LEGAL NOTICE

At a Special Term Part II of the City Court of the City of New York held in and for the County of New York, at the Courtroom thereof, 53 Chambers Street in the Borough of Manhattan, City of New York on the 20th day of July 1954.

PRESENT: HON. LOUIS J. LEFKOWITZ, Justice. In the Matter of the Application of FRANCISZKA MATUSZEWSKI, parent of KRYSZYNA DANUTA KOSTRZEWA, also known as Chrystyna Kostrowa, for leave to change the name of her daughter and to assume in name of CHRISTINE MATUSZEWSKI.

Upon reading and filing the petition of FRANCISZKA MATUSZEWSKI, parent of KRYSZYNA DANUTA KOSTRZEWA, verified the 20th day of July, 1954, praying for leave for her daughter to assume the name of CHRISTINE MATUSZEWSKI in place and stead of her present name and the Court being satisfied thereby that the averments contained in said petition are true and that there are no reasonable objections to the change of name proposed;

NOW, on motion of CHARLES C. CARROLL, ESQ., attorney for petitioner, it is

ORDERED THAT KRYSZYNA DANUTA KOSTRZEWA, born at Audubon, Germany, on May 17, 1947, be and she hereby is authorized to assume the name of CHRISTINE MATUSZEWSKI on and after the 8th day of September, 1954, upon condition however that she shall comply with the further provisions of this order; and it is further

ORDERED that this order and the aforementioned petition be filed within ten days from the date hereof in the Office of the Clerk of this Court and that a copy of this order shall within ten days from the entry thereof be published once in the Civil Service Leader a newspaper published in the City of New York, County of New York, and that within forty days after making of this order proof of such publication shall be filed with the Clerk of the City Court of New York in the County of New York, and it is further

ORDERED that a copy of this order and the papers upon which it is based shall be served the Alien Registration Division, Immigration and Naturalization Service, Washington, D. C., within twenty days after its entry and that proof of such service shall be filed with the Clerk of this Court in the County of New York within ten days after such service; and it is further

ORDERED that following the filing of

NYC to Fill Painter Jobs

The NYC Civil Service Commission has approved the requirements for painter jobs, \$2.89 an hour with the Housing Authority, and house painter, \$19.81 a day with the Department of Marine and Aviation.

Approval of the Budget Director is required before application dates are set. Do not attempt to apply until the filing period is official. Watch The LEADER for such dates.

Candidates must have five years' experience, or at least two and one-half years' experience plus helper experience or training to equal five years. Six months' experience will be credited for each 12 months of helper work or training.

The maximum period for which credit will be given for provisional work is nine months.

Training or experience acquired on military duty or in a veterans' training or rehabilitation program will be credited.

Maximum age is 50, except for veterans.

What the Duties Are

Candidates will take a written test, weight 30 per cent, and a performance test, weight 70 per cent.

A medical exam will be given. No candidate who is blind in one eye, who has less than 20/30 vi-

sion, glasses allowed, who has a hernia, who is deaf in either ear, who has defective color vision, or any other disabling defect, will be qualified.

A comprehensive physical exam will test candidates' strength and agility.

Painters do inside and outside painting of a general nature, including all coats; work on and from ladders and scaffolds as jobs may require; erect ladders; rig lines and scaffolds; prepare, fill and prime surfaces for painting; mix paint components and match colors; and take proper care of all materials, tools and equipment.

POLICE UNDERPAID EVERYWHERE, SAS ADAMS

"No policeman in the State of New York or in the United States is adequately paid," NYC Police Commissioner Francis W. H. Adams told 450 delegates to the 54th annual conference of the State Association of Chiefs of Police, meeting in NYC last week.

He urged police officials throughout the State to unite in a campaign for salaries comparable to those paid in private industry.

SHIRLEY GIVES SITE FOR FIRE HEADQUARTERS

The site for a new fire company headquarters at Shirley, L. I., was presented to the Mastic Beach Fire District by Walter T. Shirley, founder of the community.

The property consists of two plots, each 50 by 125 feet, on Lombardy Drive, between William Floyd Parkway and Pine Tree Drive.

LEGAL NOTICE

CRUTTENDEN & CO. — Notice of substance of certificate of limited partnership formed under laws of Illinois and doing business there and elsewhere, filed July 13, 1954 in New York County Clerk's office. Name: CRUTTENDEN & CO. Business: general securities business. Principal place of business: 209 South LaSalle Street, Chicago 4, Ill. Principal office and place of business in New York State: 37 Wall Street, New York City. General partners and residence addresses: Walter W. Crutenden, 887 Bob O'Link Road, Highland Park, Ill.; Robert A. Podesta, 9319 S. Hamilton Ave., Chicago, Ill.; Donald B. Stephens, 1000 Meadows Rd., Geneva, Ill.; Glenn E. Miller, 33 Williamsburg Lane, Evanston, Ill.; Walter W. Crutenden, Jr., 1161 Walnut Lane, Northbrook, Ill. Limited partners and residence addresses: Donald R. Bonniwell, 3172 Sheridan Rd., Chicago, Ill.; Fay T. Crutenden, 887 Bob O'Link Rd., Highland Park, Ill. Term of partnership is to December 31, 1954 and from year to year thereafter subject to dissolution on 30 days notice at end of any year by certain general partners. Each limited partner contributed \$50,000 in cash, securities, cash and other property which may be held by partnership for individual account of any partner, limited or general, becomes partnership property and is treated as capital contributed by such partner subject to certain provisions applicable solely to determine rights of partners among themselves. Contribution of any partner is returnable upon his death, withdrawal or incompetency, except it may be retained by a continuing or successor partnership at the risk of the business for 120 days thereafter. Property in the individual account of any partner is similarly returnable in the event of his death, and is returnable without such right of retention upon his ceasing to be a partner for any reason other than death. Fay T. Crutenden receives by reason of her contribution 5% of net profits, interest on her capital at 5% a year, whether or not earned, and to the extent earned, interest at the same rate on any amount in her individual account available to the partnership in determining its capital commitment base under New York Stock Exchange rules. Donald R. Bonniwell, as well as each general partner, is entitled to receive interest on his capital and on the amount in his individual account similarly available, at rate of 5% a year but only to extent earned. Net losses above total of general partners' contributions, shall be borne by Donald R. Bonniwell only to extent of his capital contribution and then by Fay T. Crutenden only to the extent of her capital contribution. Any partner may withdraw on 60 days' notice. Remaining partners have right to continue the business after death, incompetency or withdrawal of any partner.

DR. J. M. REINER APPOINTED TO HIGH POST AT SPA

SARATOGA SPRINGS, Aug. 9 — John M. Reiner, Ph.D., senior enzyme chemist and assistant professor of biochemistry of the College of Physicians and Surgeons of Columbia University, has assumed his duties as research director of the Saratoga Spa. Social Investigator Study Book.

LEGAL NOTICE

LICHTENSTEIN, FERDINAND. — CITATION. — THE PEOPLE OF THE STATE OF NEW YORK, BY THE GRACE OF GOD FREE AND INDEPENDENT, TO: FERDINAND LICHTENSTEIN and HERTA LICHTENSTEIN, nee ERMANN, persons who have disappeared under circumstances affording reasonable ground to believe that they are dead: Good Greeting:

Upon the petition of Julius Lichtenstein, residing at 155 Audubon Avenue, Borough of Manhattan, City, County and State of New York, you and each of you are hereby cited to show cause before the Surrogate's Court of New York County, held at the Hall of Records, in the County of New York, on the 14th day of September, 1954, at half-past ten o'clock in the forenoon of the day, why the Surrogate should not inquire into the facts and circumstances and make a decree determining that the said Ferdinand Lichtenstein and his wife Herta Lichtenstein, nee Ermann, late of Schwalbach/Saar, in the Saar Territory, are dead, and why Julius Lichtenstein should not be appointed ancillary administrator with the will annexed on the estate of FERDINAND LICHTENSTEIN, deceased, late of Schwalbach/Saar, Saar Territory.

In Testimony Whereof, we have caused the seal of the Surrogate's Court of said County of New York to be hereunto affixed. Witness Honorable William T. Collins, a Surrogate of our said County, at the County of New York, the 5th day of August, in the year of our Lord, one thousand nine hundred and fifty-four. (L. S.) PHILIP A. DONAHUE, Clerk of the Surrogate's Court.

Save Together

OPEN A JOINT SAVINGS ACCOUNT AT THE FAMOUS DIME



When two of you share plans and hopes and dreams — save together and you'll save more!

You can have a Joint Account in two names at The Dime. You can both make deposits whenever you like. You can both make withdrawals on individual signatures if you wish — or you can open the account so both signatures are necessary for withdrawing money. In the event of death of one person, the balance is payable to the survivor.

And . . . If you wish, you can open your Joint Account in Trust for your child or children to whom the balance will be payable as beneficiary.

Open a Joint Account—and do it now—by mail if you like. You can start with as little as \$5 as much as \$20,000.

The DIME SAVINGS BANK OF BROOKLYN

DOWNTOWNFulton Street and DeKalb Ave.
 BENSONHURST86th Street and 19th Avenue
 FLATBUSHAve. J and Coney Island Avenue
 CONEY ISLANDMermaid Ave. and W. 17th St.

LATEST QUARTERLY DIVIDEND
2 1/2% A YEAR PLUS EXTRA
 at the rate of **1/8%** A YEAR
 FROM DAY OF DEPOSIT



Member Federal Deposit Insurance Corporation

Mail this coupon to any office of The Dime Savings Bank of Brooklyn

I enclose \$_____ Please open a Savings Account as checked:

Individual Account in my name alone

Joint Account with _____

Trust Account for _____

NAME _____

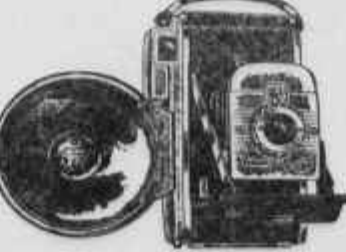
ADDRESS _____

CITY, ZONE NO., STATE _____

Cash should be non registered mail.

Just out!

NEW PICTURE-IN-A-MINUTE CAMERA



THE Highlander

Now you can enjoy all the fun of 60-second photography — the excitement of lifting beautiful finished prints right out of your camera — for much, much less than ever before!

\$6995* as little as \$7 down Federal Tax Incl.

PROSPECT Photographic Corp.
 104 Fourth Avenue, Brooklyn 17, N. Y.
 Car. Warren St. TE 5-4513
 For Further Information Write for Illustrated Booklet L. Headquarters for All Other Photographic Equipment



TOO HOT TO SLEEP?

FEDDERS WILL COOL YOU OFF FOR AS LOW AS \$266 A WEEK

WHY wrestle with a damp pillow all night and lose your sleep . . . you can throw hot, muggy weather out for good with a Fedders Room Air Conditioner! Act now and sleep in mountain-cool air!



COOL! Fedders has the cooling power of 15 refrigerators . . . at less than the price of one. Circulates air . . . ventilates room . . . with never a draft!

CLEAN! Fedders oversize filters catch dust, pollen. Help relieve miseries of hay fever, asthma. Keep rooms cleaner, cut housework and dry cleaning bills.

DEHUMIDIFIES! Removes up to 30 qts. of excess moisture a day, keeps air healthfully dry. No pipes or building alterations needed.

Exclusive Built-in Weather Bureau Press a button for the weather you want. See this greatest new advance in room air conditioning . . . and try it . . . today!

Cortlandt Co.
 243 BROADWAY (OPPOSITE CITY HALL)
 Open Daily to 6:30 P. M. Thursday, 9 P. M.
 Downtown's Newest Department Store
 All Nationally Advertised Products
 Appliances - Televisions - Furniture
 Accessories - Refrigerators
 Housefurnishings - Washing Machines
 Gift Ware
BE ckms 3-5900

State Pay

(Continued from Page 3)

Communicable Disease Veterinary Consultant, 27, 24. Compensation Claims Investigator, 9, 10. *Compensation Claims Legal Investigator, 11, 13. Compensation Investigator, 9, 10. *Compensation Reviewing Examiner, 12, 12. Concession Stand Representative, 10, 11. Concession Stand Supervisor, 18, 16. Conservation Aide, 5, 7. Conservation Education Assistant, 16, 14. Conservation Publications Editor, 20, 18. Construction Assistant, 11, 11. Construction Equipment Operator, 5, 7. Construction Safety Inspector, 13, 13. Construction Wage Rate Investigator, 9, 10. Consultant on Child Detention Care, 20, 18. Consultant Public Health Nurse, 20, 18. Cook, 6, 8. Coordinator of Community Mental Health Services, 30, 25. Core Drill Operator, 6, 7. Corporal, Park Patrol, 12, 12. Corporation Tax Examiner, 14, 14. Correspondence Censor, 6, 7. Counsel to Division of Employment, 39, 31. Crafts Production Representative, 10, 11. Crafts Production Supervisor, 18, 16. Crane and Shovel Operator, 9, 11. Craneman, 8, 9. Criminal Hospital Attendant, 8, 10. Criminal Hospital Charge Attendant, 10, 12. Criminal Hospital Chief Attendant, 19, 19. Criminal Hospital Head Nurse, 11, 12. Criminal Hospital Senior Attendant, 9, 11. Criminal Hospital Staff Nurse, 9, 10. Criminal Hospital Supervising Attendant, 15, 16. Curator, 13, 13. Custodian of Buildings and Grounds, 14, 15. Damages Evaluator, 15, 14. Deckhand Foreman, 5, 8. Decorating Mechanic, 8, 9. Dental Assistant, 4, 5. Dental Hygienist, 7, 9. Dental Investigator, 14, 13. Dental Technician, 6, 7. Dentist, 20, 20. Department of State Accounts Examiner, 20, 18. Department of State Publications, Editor, 20, 18. Deputy Chief Engineer, 50, 37. Deputy Commissioner of Standards and Purchase, 42, 33. Deputy Commissioner of Taxation and Finance and Counsel, 50, 34. Deputy Corporation Tax Director, 34, 28. Deputy State Rent Administrator, 35, 29. Deputy Superintendent of Banks, 46, 35. Deputy Superintendent and Counsel, 46, 34. Deputy Tax Commissioner and Manhattan District Supervisor, 50, 34. Derrick Boat Captain, 11, 12. Derrick Boat Master, 14, 14. Dictating Machine Transcriber, 2, 3. Dietitian, 9, 11. Dietitian Aide, 4, 4. Dining Room Attendant, LG-1, 1. Director of Accounting Systems, 32, 27. Director of Accounts and Finance, 42, 33. Director of After-Care Clinics, 44, 35. Director of Alcoholism Research, 32, 27. Director of Bedding Inspection, 33, 25. Director, Branch of Boys' Training School, 30, 25. Director, Bureau of Aviation, 34, 28. Director, Bureau of Business Promotion, 35, 28. Director, Bureau of Business Research, 34, 28. Director, Bureau of Business Service, 34, 28. Director, Bureau of Planning, 34, 28. Director, Bureau of Travel, 34, 28. Director of Business Management and Personnel, 39, 29. Director of Cancer Institute, 50, 37. Director of Cancer Radiology, 44, 34. Director of Cerebral Palsy Unit, 18, 18. Director of Civil Service Examinations, 39, 32.

Director of Classification and Compensation, 50, 36. Director of Clinical Laboratories, 40, 32. Director of Community Organization for Youth, 28, 24. Director of Compensation Claims, 42, 33. Director of Conservation Department Accounts, 37, 29. Director of Conservation Education, 32, 27. Director of Correction Accounts, 36, 30. Director of Correction Reception Center, 39, 32. Director of Correctional Research, 32, 27. Director of Correctional Training, 28, 23. Director of Craig Colony, 44, 35. Director of Criminal Identification, 32, 27. Director of Education, 32, 27. Director of Education Research, 32, 27. Director of Elementary Education, 36, 29. Director of Employment Security Finance, 39, 32. Director of Employment Security Personnel, 34, 30. *Director of Employment Security Training, 25, 24. Director of Field Audit, 39, 31. Director of Fish and Game, 39, 31. Director of General Accounts, 39, 32. Director of Health Department Accounts, 39, 31. Director of Health and Physical Education, 34, 27. Director of Health Statistics, 40, 32. Director of Highway Planning, 44, 34. Director of Housing Project Development, 42, 33. Director of Housing Research and Statistics, 34, 29. Director of Industrial Education, 36, 29. Director of Industrial Hygiene and Safety Standards, 42, 33. Director of Industrial Relations, Women in Industry and Minimum Wage, 39, 31. Director of Industrial Safety Service, 39, 31. Director of Insurance Department Tax and Accounts, 37, 27. Director of Labor Research and Statistics, 42, 31. *Director of Laboratories and Research, 50, 37. Director of Lands and Forests, 39, 31. Director of Leases and Automotive Services, 32, 28. Director of Licenses, 32, 27. Director of Local Assessments, 34, 27. Director of Local Assistance, 39, 30. Director of Mail and Supplies, 25, 22. Director of Medical Defense, 34; this position is now erroneously listed as "NS." It is in the competitive class. Director of Mental Hospital, 44, 35. Director of Mental Hygiene Nursing Service, 32, 27. Director of Mental Hygiene Occupational Therapy, 30, 25. Director of Mental Hygiene Personnel, 32, 27. Director of Mental Hygiene Publications and Public Relations, 28, 25. *Director of Mental Hygiene Social Work, 32, 27. Director of Mental Hygiene Statistics, 34, 29. Director of Motion Pictures, 34, 28. Director of Municipal Service, 39, 31. Director of Municipal Statistics, 34, 28. Director of Nursing, 20, 18. Director of Nutritional Services, 32, 27. Director of Office Administration, 25, 23. Director of Office Audit, 39, 32. Director of Payroll Audits, 37, 30. Director of Personnel, 32, 27. Director of Personnel and Office Administration, 34, 29. Director of Personnel Research, 39, 31. Director of Physical Rehabilitation, 20, 18. Director of Physical Therapy, 20, 18. Director of Planning, 35, 29. *Director of Prison Industries, 39, 33. Director of Probation, 32, 27. Director of Psychiatric Institute, 50, 37. Director of Psychiatric Research, 42, 33. Director of Psychiatric Social Work Training, 22, 20. Director of Psychological Services, 30, 25. Director of Public Assistance, 32, 23. Director of Public Employee Training, 34, 28. Director of Public Health Development and Evaluation, 44, 34. Director of Public Health Education, 40, 32. Director of Public Health Nursing, 32, 27.

Director of Public Works Contracts and Accounts, 46, 35. Director of Public Works Laboratory, 39, 31. Director of Public Works Personnel, 34, 27. Director of Publications and Public Relations, 28, 24. Director of Pupil Personnel Services, 36, 29. Director, Radio-Motion Picture Bureau, 34, 28. Director, Rehabilitation of the Blind, 25, 23. Director of Rehabilitation Hospital, 44, 34. Director of Research, Division of Employment, 39, 31. Director of Retirement Accounts, 30, 25. Director of Safety Service, 37, 30. Director of Sanitary Engineering, 45, 34. Director of Saratoga Springs Reservation, 44, 30. Director of School Building Service, 36, 29. Director of School Financial Aid, 34, 28. Director of Secondary Education, 36, 29. Director, Services for the Blind, 32, 27. Director of Social Statistics, 34, 29. Director of Special Investigations, 50, 34. Director of Standards, 39, 27. Director of State Archives and History, 32, 27. Director of State Parks, 50, 36. Director of State School, 44, 35. Director of State Traffic Commission, 36, 29. Director of Tax and Finance Accounts, 35, 29. Director of Tax Research and Statistics, 34, 29. Director of Tuberculosis Hospital, 44, 34. Director of Visual Education, 32, 23. Director of Vital Statistics, 34, 27. Director of Vocational Rehabilitation, 34, 28. Director of Welfare Area Office, 28, 25. Director of Welfare Medical Services, 44, 34. *Director of Workmen's Compensation Accounts, 32, 29. *Director of Workmen's Compensation Board Review, 34, 28. Disability Benefits Examiner, 10, 10. District Engineer, 46, 36. *District Fisheries Manager, 20, 18. District Forester, 22, 20. District Game Manager, 18, 17. District Game Protector, 16, 15. District Health Officer, 34, 29. *District Marine Fisheries Protector, 16, 15. District Ranger, 16, 14. District Supervising Public Health Nurse, 20, 18. District Supervisor of Agriculture and Markets, 20, 18. District Supervisor of Fish Culture, 20, 16. District Tax Supervisor, 35, 29. Dog Licensing Agent, 7, 9. Domestic, LG-1, 1. Dredge Captain, 14, 14. Dredge Craneman, 9, 10. Dredge Operator, 11, 12. Drill Rig Operator, 9, 10. Drill Supervisor, 14, 13. Economist, 14, 14. Editor of School Reports, 22, 18. Editorial Assistant, 16, 14. *Education Research Aide, 14, 14. Education State Aid Analyst, 28, 24. Electric Inspector, 8, 11. Electrician, 9, 11. Electrician Foreman, 12, 13. Electroencephalograph Technician, 5, 6. Electronics Technician, 6, 8. Elevator Operator, 4, 4. Elevator Repairman, 9, 11. Elevator Starter, 6, 7. Embalmer, 6, 8. Embalming and Undertaking Investigator, 10, 12. Employment Consultant, 23, 19. Employment Interviewer, 11, 12. Employment Manager, 21, 19. Employment Security Administrative Assistant, 21, 19. Employment Security Area Director, 39, 32. Employment Security Assistant Area Director, 35, 29. Employment Security Manager, 21, 19. Employment Security Superintendent, 28, 25. Employment Superintendent, 28, 25. Estate Tax Examiner, 14, 14. Examinations Editor, 14, 14. Examiner of Mortgages, 14, 14. Examiner of Municipal Affairs, 14, 14. Examiner of State Payrolls, 8, 10. Executive Officer A, 32, 27. Executive Officer B, 25, 22. Executive Officer C, 22, 20. Executive Officer D, 20, 18. Executive Officer E, 15, 14. Executive Officer F, 10, 11. Executive Secretary to Medical Practice Committee, 20, 18.

Executive Secretary to the Water Pollution Control Board, 42, 32. Exhibit Designer, 11, 11. Exhibits Mechanic, 5, 10. Exterminator, 8, 8. Eye Classification Analyst, 18, 16. Fabric Specialist, 11, 12. Factory Inspector, 12, 12. Farm Consultant, 21, 19. Farm Manager, 14, 14. Farm Placement Representative, 11, 12. Farm Placement Supervisor, 20, 18. Farm Products Inspector, 11, 11. Farmer, 4, 5. Farmhand, LG-1, 2. Field Representative (Commission Against Discrimination), 22, 19. File Clerk, 2, 3. Film Library Supervisor, 20, 16. Film Production Supervisor, 25, 22. Filter Plant Operator, 8, 9. Financial Secretary, 20, 19. *Fingerprint Clerk, 3, 4. Fish Hatchery Foreman, 11, 11. Floating Plant Supervisor, 16, 16. *Folding Machine Operator, 9, 8. Food Chemist, 14, 14. Food Service Advisor, 25, 22. Food Service Instructor, 15, 14. Food Service Manager, 15, 14. Forest Appraiser, 20, 16. Forest General Foreman, 11, 11. Forest Nursery Foreman, 6, 8. Forest Pest Control Field Supervisor, 16, 14. Forest Ranger, 5, 7. Forest Surveyor, 19, 17. Forester, 16, 14. Game Farm Foreman, 11, 11. Game Pathologist, 14, 14. Game Protector, 6, 7. Game Research Investigator, 16, 14. Gas Inspector, 8, 9. Gas Meter Tester, 7, 8. Gas Tester, 8, 9. General Director of Tuberculosis Hospitals, 46, 35. General Industrial Foreman, 16, 16. General Manager of Allegany Parks, 27, 24. General Manager of Central New York Parks, 32, 27. *General Manager of Genesee Parks, 32, 27. *General Manager of Taconic Parks, 39, 32. General Manager of Thousand Island Parks, 25, 22. General Mechanic, 9, 11. General Park Foreman, 12, 12. General Park Superintendent, 25, 22. General Parkway Foreman, 14, 13. General Supervisor of Building Construction, 46, 36. Graphic Statistician, 17, 14. Greenhouseman, 5, 6. Grounds Construction Foreman, 12, 12. Groundsman, 2, 3. Group Care Consultant, 20, 18. Guidance Counsellor, 9, 11. Guidance Supervisor, 15, 16. Gypsy Moth Foreman, 11, 9. Harbormaster, 8, 7. *Harness Racing Aide, 6, 7. Harness Racing Supervisor, 23, 19. Head Account Clerk, 20, 18. Head Actuarial Clerk, 17, 16. Head Attendant, 9, 13. Head Audit Clerk, 20, 18. Head Baker, 10, 11. Head Bindery Worker, 2, 4. Head Children's Supervisor, 14, 14. Head Clerk, 16, 15. Head Compensation Clerk, 18, 16. Head Cook, 10, 11. Head Cook and Housekeeper, 9, 11. Head Dictating Machine Transcriber, 15, 15. Head Dining Room Attendant, 4, 6. Head Editorial Clerk, 16, 15. Head Elevator Starter, 9, 10. Head Farmer, 7, 9. Head File Clerk, 16, 15. Head Hearing Reporter, 20, 18. Head Housekeeper, 9, 11. Head Hydro-electric Operator, 14, 15. Head Industrial Shop Worker, 8, 10. Head Institution Fireman, 6, 8. Head Institution Patrolman, 6, 8. Head Janitor, 9, 11. Head Laundry Supervisor, 10, 12. Head Law Clerk, 20, 16. Head Mail and Supply Clerk, 15, 15. Head Maintenance Supervisor, 20, 19. Head Matron, 18, 17. Head Mechanical Supervisor, 20, 18. Head Motor Vehicle License Examiner, 27, 20. Head Nurse, 9, 10. Head Printing Clerk, 16, 15. Head Public Building Maintenance Supervisor, 20, 18. Head Seamstress, 6, 9. Head Stationary Engineer, 20, 19. Head Statistics Clerk, 17, 16. Head Stenographer, 15, 14.

*Head Tabulating Machine Operator, 16, 15. Health Local Assistance Supervisor, 25, 22. Health Publications Editor, 25, 22. Hearing Attendant, 4, 4. Hearing Reporter, 15, 14. Hearing Stenographer, 10, 11. *Highway Equipment Operator, 5, 6. Highway General Maintenance Foreman, 9, 13. Highway Light Maintenance Foreman, 6, 8. Histology Technician, 6, 8. Historian, 20, 18. Historic Site Attendant, 1, 2. Historic Site Caretaker, 4, 5. Historic Site Superintendent, 6, 7. Home Economist, 14, 14. Home Teacher for the Blind, 4, 5. Horticultural Aide, 4, 5. Horticultural Inspector, 11, 12. Horticulturist, 11, 11. Hospital Administrative Officer, 36, 29. Hospital Attendant, 1, 3. Hospital Business Management Advisor, 32, 25. Hospital Medical Management Advisor, 40, 32. Housefather, 4, 6. Housekeeper, 4, 5. Housemother, 4, 6. Housing Management Inspector, 25, 20. Housing Management Supervisor, 32, 27. Housing Safety Inspector, 15, 12. Hydro-electric Operator, 8, 9. Identification Analyst, 14, 14. Identification Officer, 6, 7. *Income Tax Accounts Supervisor, 31, 26. Income Tax Examiner, 14, 14. Industrial Consultant, 19, 18. Industrial Engineer, 20, 19. Industrial Foreman, 11, 13. Industrial Geographer, 14, 14. Industrial Hygiene Engineer, 20, 19. Industrial Inspector, 8, 10. Industrial Investigator, 10, 11. Industrial Shop Worker, 5, 7. Industrial Superintendent, 28, 24. Inspector of Motor Vehicle Licensing Operations, 11, 11. Inspector of Penal Institutions, 17, 15. Inspector of Weights and Measures, 11, 11. Inspector of Welfare Institutions, 17, 15. Institution Education Director, 20, 18. Institution Education Supervisor, 15, 15. Institution Farm Advisor, 18, 16. Institution Fireman, 4, 6. Institution Patrolman, 4, 6. Institution Safety Supervisor, 9, 10. Institution Steward, 25, 23. Institution Teacher, 10, 11. Institution Vocational Instructor, 10, 11. Instructor of Nursing, 11, 12. Insurance Advisor, 23, 20. Insurance Collector, 8, 9. Insurance Field Investigator, 20, 16. *Insurance Examiner, 21, 18. Insurance Fund Supervising Attorney, 34, 29. *Insurance Qualifications Examiner, 21, 18. *Insurance Policy Examiner, 21, 18. Insurance Sales Director, 42, 33. Insurance Sales Representative, 18, 16. Investigator, 14, 13. Investigator of Absent Employees, 6, 7. Investigator of Animal Industry, 11, 11. Janitor, 2, 4. Job Printer, 8, 10. Junior Accountant, 9, 10. Junior Actuary, 11, 10. Junior Administrative Assistant, 15, 14. Junior Analytical Chemist, 9, 10. Junior Architect, 14, 15. Junior Architectural Draftsman, 4, 6. Junior Architectural Estimator, 14, 15. Junior Attorney, 14, 14. Junior Auditor, 8, 10. Junior Bacteriologist, 9, 10. Junior Biochemist, 9, 10. Junior Budget Examiner, 14, 14. Junior Building Electrical Engineer, 14, 15. Junior Building Structural Engineer, 14, 15. Junior Business Consultant, 11, 10. Junior Chemical Engineer, 14, 15. Junior Chemist, 9, 10. Junior Civil Engineer, 14, 15. Junior Compensation Claims Auditor, 9, 10. Junior Cytologist, 9, 10. Junior Draftsman, 4, 6. Junior Economist, 10, 10. Junior Electric Engineer, 14, 18. Junior Engineering Aide, 4, 5. Junior Examiner of Methods and Procedures, 9, 10. Junior Field Investigator, 8, 18. Junior Forester, 9, 10. (Continued on Page 16)

State Pay

(Continued from Page 13)

Asst. Insurance Qualifications Examiner, G-21; 18, Insurance Qualifications Examiner.
 Asst. Insurance Report Auditor, G-21; 18, Insurance Examiner.
 Asst. Laboratory Engineer, G-20; —, See Note 1.
 Asst. Milk Sanitarian, G-14; 15, Milk Sanitarian.
 Asst. Projectionist, G-14; 11, Projectionist.
 Asst. Supt. of Boys' Training School, G-28; 24, Asst. Supt. of Training School.
 Asst. Supt. of Girls' Training School, G-28; 24, Asst. Supt. of Training School.
 Asst. Supt. of Inland Fisheries, G-20; 21, Supvg. District Fisheries Manager.
 Asst. Supervising Truck Weigher, G-12; 13, Supervising Truck Weigher.
 Asst. in Visual Education Loans, G-10; 7, Senior Clerk.
 Assoc. in Audio-Visual Education, G-25; 19, Asst. in Audio-Visual Education.
 Assoc. Auditor of Printing, G-25; 18, Head Audit Clerk (Printing).
 Assoc. in Child Development and Parent Education, G-25; 23, Associate in Child Development.
 Assoc. Compensation Examining Oculist, G-34; 29, Assoc. Compensation Ex. Ophthalmologist.
 Associate Corporation Examiner, G-32; 27, Assoc. Attorney (Corporations).
 Associate Education Accountant, G-25; 14, Principal Account Clerk.
 Assoc. Educ. Supvr. (Private Trade Schools), G-25; 19, Asst. in Private Trade School Admin.
 Assoc. Educ. Supvr. (Professional Education), G-25; 23, Assoc. in Professional Education.
 Assoc. Insurance Qualifications Examiner, G-30; 23, Sr. Insurance Qualifications Examiner.
 Assoc. Insurance Report Auditor, G-30; 26, Associate Insurance Examiner.
 Associate Laboratory Engineer, G-32; —, See Note 1.
 Assoc. Research Analyst (Vet. Affairs), G-32; 23, Sr. Research Analyst (Veterans Affairs).
 Assoc. in School Library Service, G-25; 19, Asst. in School Library Service.
 Assoc. Welfare Consultant (Public Health), G-23; 23, Assoc. Welfare Consultant (Medical).
 Assoc. Welfare Consultant (Research), G-25; 18, Sr. Economist.
 Cameraman, G-16; 11, Photographer.
 Campsite Construction Foreman, G-11; —, See Note No. 2.
 Chief Estate Tax Surrogate

Clerk, G-25; 20, Chief Clerk (Surrogate).
 Chief Ins. Examiner (Administration), G-46; 34, Chief Ins. Examiner (Administration).
 Chief Ins. Examiner (Casualty), G-42; 31, Supervising Ins. Examiner (Property).
 Chief Ins. Examiner (Fire and Marine), G-42; 31, Supervising Ins. Examiner (Property).
 Chief Ins. Examiner (Life), G-42; 34, Chief Ins. Examiner (Life).
 Chief Ins. Examiner (Mutual and Fraternal), G-42; 34, Chief Ins. Examiner (Property).
 Chief Ins. Examiner (Rates), G-42; 31, Supervising Ins. Examiner (Rates).
 Chief Land Claim Examiner, G-30; 27, Associate Attorney (Realty).
 Chief Law Clerk, G-25; 15, Head Clerk.
 Chief Milk License Clerk, G-22; 15, Head Clerk.
 Chief Purchase Clerk, G-22; 20, Chief Clerk (Purchase).
 Chief Rent Examiner (Accounting), G-28; 24, Chief Rent Accountant.
 Chief Securities Accountant, G-37; 27, Principal Accountant.
 Civil Service Information Secretary, G-10; 7, Senior Clerk.
 Clerk (Fingerprinting), G-2; 4, Fingerprint Clerk.
 Coal Weigher, G-10; 4, Power Plant Helper.
 Community Health Assistant, G-20; 14, Junior Administrative Assistant.
 Compensation Claims Investigator (Legal), G-11; 13, Comp. Claims Legal Investigator.
 Compensation Claims Referee, G-34; —, See Note No. 3.
 Compensation Examining Physician, G-34; 29, Assoc. Comp. Examining Physician.
 Conservation Investigator, G-16; 15, District Marine Fisheries Protector.
 Construction Foreman, G-16; —, See Note No. 4.
 Consultant for Placement of Nurses, G-20; 19, Employment Consultant (Nursing).
 Coordinator of Public Relations, G-50; —, To be reclassified.
 Correction Inst. Education Supervisor, G-15; 15, Institution Education Supervisor.
 Correction Institution Teacher, G-10; 11, Institution Teacher.
 Correction Institution Vocational Instructor, G-10; 11, Institution Vocational Instructor.
 Correction Physical Training Supvr., G-15; 15, Recreation Supervisor.
 Court Fund Examiner, G-14; 14, Asst. State Accounts Auditor.
 Department Counsel (Civil Service), G-50; —, To Be Reclassified.
 Department Information Secretary, G-25; 18, Sr. Publicity Agent.
 Deputy Supt. of Insurance, G-39; —, See Note 5.
 Director of Files, G-25; 20, Chief File Clerk.
 Director of Housing Publications and Public Relations, G-28; 22, Sr. Publicity Editor.
 Director of Industrial Board Review, G-34; 28, Dir. of Workmen's Comp. Bd. Review.
 Director of Industrial Engineering, G-39; 27, Assoc. Industrial Engineer.
 Director of M. Hyg. Psychl. Social Work, G-32; 27, Director of M. Hyg. Social Work.
 Director of Purchase, G-27; 22, Purchasing Specialist.
 Dock Carpenter, G-9; 11, Carpenter.
 Editor of Municipal Affairs Reports, G-25; 23, Assoc. Examiner of Municipal Affairs.

Elevator Maintenance Supvr., G-12; 11, Elevator Repairman.
 Estate Tax Appraiser, G-25; 17, Sr. Estate Tax Examiner.
 Estate Tax Investigator, G-11; 11, Principal Clerk.
 Estate Tax Securities Appraiser, G-14; 14, Estate Tax Examiner.
 Examinations Control Supervisor, G-22; 20, Chief Clerk.
 Executive Asst. (Professional Educ.), G-30; 23, Assoc. in Professional Education.
 Executive Officer, G-25; 23, Sr. Administrative Asst. (Executive).
 Executive Officer G, G-7; 11, Executive Officer F.
 Field Investigator, G-14; 14, Asst. State Accounts Auditor.
 First Asst. Comm'r. for Prison Industries, G-39; 33, Director of Prison Industries.
 General Mgr. of Niagara Frontier Parks, G-32; 24, Asst. Gen. Mgr. of Niagara Front. Parks.
 Graduate Nurse, G-9; 10, Head Nurse.
 Head Cattle Appraiser, G-20; 15, Sr. Cattle Appraiser.
 Head Charwoman, G-2; —, See Note No. 6.
 Head Office Machine Operator (Tabulating), G-16; 15, Head Tabulating Machine Operator.
 Head Poultryman, G-7; 9, Head Farmer.
 Head Purchase Clerk, G-17; 15, Head Clerk (Purchase).
 Health Exhibit Operator, G-6; —, See Note 7.
 Industrial Reviewing Examiner, G-22; 19, Supervising Industrial Investigator.
 Insurance Research Assistant, G-12; 14, Research Assistant.
 Investigator (Public Accountancy), G-14; —, See Note 8.
 Jr. Comp. Reviewing Examiner, G-12; 12, Comp. Reviewing Examiner.
 Jr. Educ. Supervisor (Research), G-9; 10, Research Aide.
 Jr. Examiner of State Expenditures, G-8; 8, Sr. Audit Clerk.
 Jr. Housemother, G-1; —, See Note 9.
 Jr. Insurance Report Auditor, G-17; 14, Jr. Insurance Examiner.
 Jr. Laboratory Engineer, G-14; —, See Note 1.
 Jr. Physician, G-17; 20, Physician.
 Jr. Research Aide, G-8; 10, Research Aide.
 Labor Publications Editor, G-25; 18, Sr. Publicity Agent.
 Labor Statistics Engineer, G-17; 12, Prin. Statistics Clerk.
 Law Case Investigator, G-14; 13, Investigator.
 Linotype Operator, G-13; 12, Printer.
 Maintenance Man (Power Plant), G-5; 4, Power Plant Helper.
 Market Information Analyst, G-20; 17, Sr. Market Reporter.
 Mechanical Handyman, G-8; —, See Note 10.
 News Photographer, G-20; 15, Sr. Photographer.
 Nurses Aide, G-3; —, See Note 11.
 Office Machine Operator (Billing), G-4; 4, Billing Machine Operator.
 Office Machine Operator (Bookkeeping), G-2; 4, Bookkeeping Machine Operator.
 Office Machine Operator (Key Punch), G-2; 4, Key Punch Operator.
 Parkway Foreman with Truck, G-14; 8, Parkway Foreman.
 Parole Case Supervisor, G-20; 14, Parole Officer.
 Policeman, G-5; 6, Institution Patrolman.
 Prin. Clerk (Fingerprinting), G-10; 11, Principal Fingerprint Clerk.
 Prin. Insurance Report Auditor, G-35; 29, Principal Insurance Examiner.
 Prin. Landscape Architect, G-39; 27, Assoc. Landscape Architect.
 Prin. Mental Health Consultant, G-32; —, See Note 5.
 Prin. Office Machine Operator (Key Punch), G-10; 11, Prin. Key Punch Operator.
 Prin. Office Machine Operator (Offset Printing), G-10; 11, Prin. Offset Printing Machine Operator.
 Prin. Office Machine Operator (Printing), G-10; 8, Sr. Printing Machine Operator.
 Prin. Office Machine Operator (Reproduction), G-12; 11, Prin. Offset Printing Machine Operator.
 Prin. Office Machine Operator (Tabulating), G-12; 12, Prin. Tabulating Machine Operator.
 Prin. Purchase Clerk, G-12; 11, Prin. Clerk (Purchase).
 Prin. Securities Accountant, G-31; 23, Associate Accountant.
 Psychiatric Research Librarian, G-14; 14, Assistant Librarian (Medicine).
 Recording Secretary, G-22; 14, Hearing Reporter.
 Rent Examiner (Accounting), G-14; 14, Rent Accountant.

Research Aide (Harness Racing), G-6; 7, Harness Racing Aide.
 Research Asst. (Education), G-14; 14, Education Research Aide.
 Research Interne (Budget), G-9; 10, Budget Aide.
 Research Scientist, G-14; 14, Asst. Research Scientist.
 Safety Coordinator (Training), G-23; 18, Sr. Training Technician.
 Salary Standardization Board Asst., G-17; 14, Jr. Admin. Assistant.
 Secretary to Dept. of Civil Service, G-20; 14, Secretarial Assistant.
 Secretary to State Ins. Board & Supt., G-15; 14, Jr. Admin. Assistant.
 Securities Control Officer, G-31; 18, Head Account Clerk.
 Senior Attorney (Court Trials), G-28; 25, Senior Trial Attorney.
 Senior Clerk (Fingerprinting), G-6; 8, Senior Fingerprint Clerk.
 Senior Corporation Examiner, G-25; 23, Sr. Attorney (Corporations).
 Sr. Director of Pilgrim State Hospital, G-50; 36, Sr. Director of Mental Hospital.
 Sr. Education Institution Engineer, G-25; 19, Asst. in School Business Management.
 Senior Educ. Supvr. (Professional Exam. & Qualifying Certificates), G-20; 14, Jr. Admin. Assistant.
 Senior Embalming and Undertaking Investigator, G-14; 12, Embalming and Undertaking Investigator.
 Senior Examiner of State Expenditures, G-20; 18, Head Audit Clerk.
 Sr. Field Representative (Educ. Practices), G-25; —, See Note 5.
 Senior Ichthyologist, G-20; 18, District Fisheries Manager.
 Senior Insurance Audit Clerk, G-7; 8, Senior Account Clerk.
 Senior Insurance Report Auditor, G-25; 23, Senior Insurance Examiner.
 Senior Laboratory Engineer, G-25; —, See Note 1.
 Senior Medical Social Worker, G-17; 18, Sr. Welfare Consultant (Medical).
 Senior Office Machine Operator (Billing), G-6; 8, Sr. Billing Machine Operator.
 Senior Office Machine Operator (Bookkeeping), G-6; 8, Sr. Bookkeeping Machine Operator.
 Senior Office Machine Operator (Key Punch), G-6; 7, Senior Key Punch Operator.
 Senior Office Machine Operator (Offset Printing), G-6; 8, Sr. Offset Printing Machine Operator.
 Senior Office Machine Operator (Printing), G-6; 8, Sr. Printing Machine Operator.
 Senior Office Machine Operator (Tabulating), G-7; 8, Sr. Tabulating Machine Operator.
 Senior Payroll Examiner, G-14; 12, Payroll Examiner.
 Senior Public Relations Assistant, G-20; 14, Publicity Agent.
 Sr. Rent Examiner (Accounting), G-18; 16, Senior Rent Accountant.
 Sr. Research Analyst (Veterans Affairs), G-25; 18, Research Analyst (Veterans Affairs).
 Senior Research Dentist, G-25; 23, Senior Dentist.
 Sr. Research Scientist (Biochemistry), G-20; 18, Research Scientist (Biochemistry).
 Sr. Research Scientist (Blood Protein), G-25; 23, Blood Protein Sr. Research Scientist.
 Sr. Research Scientist (Physiology), G-20; 18, Research Scientist (Physiology).
 Sr. Research Scientist (Psychology), G-20; 18, Research Scientist (Psychology).
 Sr. Research Scientist (Social Psychology), G-25; 22, Assoc. Social Psychologist.
 Sr. Social Worker (Youth Parole), G-17; 15, Sr. Youth Parole Worker.
 Senior State Archivist, G-25; 23, Records Management Analyst.
 Sr. Supvr. of School Medical Services (General), G-28; 25, Supvr. of School Medical Services.
 Senior Vault Guard, G-16; 6, Vault Guard.
 Senior Veterinarian, G-20; 18, Veterinarian.
 Shellfish Protector, G-11; 7, Marine Fisheries Protector.
 Shellfish Sanitarian, G-27; 23, Marine Fisheries Sanitarian.
 Social Worker (Youth Parole), G-12; 12, Youth Parole Worker.
 Superintendent, G-1; 4, Park Caretaker.
 Supt. of Boys' Training School, G-40; 32, Superintendent of Training School.
 Supt. of Girls' Training School, G-40; 32, Superintendent of Training School.
 Supt. of Inland Fisheries, G-25; 14, Supvr. of Fish Salvage.
 Supervising Cattle Appraiser, G-16; 11, Cattle Appraiser.
 Supervising Charwoman, G-1; —, See Note 6.

Supervising Comp. Exam. Physician, G-40; 32, Prin. Comp. Exam. Physician.
 Supervising Housemother, G-11; 10, Sr. Housemother.
 Supervising Operating Room Nurse, G-12; —, See Note 12.
 Supervising Rent Examiner (Accounting), G-21; 18, Supervising Rent Accountant.
 Supervisor of Embalming and Undertaking, G-19; 18, Supervisor of Funeral Directing Section.
 Supervisor of Fish Management, G-19; 16, Supvr. of Stream Improvement.
 Supervisor of Game Management, G-20; 21, Supervising District Game Manager.
 Supervisor of Game Research, G-20; 18, Conservation Publications Editor.
 Supervisor of Industrial Hygiene Exhibits, G-16; 12, Factory Inspector.
 Supervisor of Local Assessments, G-25; 20, Assoc. Local Assessments Examiner.
 Supvr. of Social Work (Youth Parole), G-20; 18, Youth Parole Supervisor.
 Supervisor of Welfare Client Resources, G-20; —, See Note 5.
 Unemp. Insurance Referee (Admin.), G-25; 24, Sr. Unemp. Insurance Referee.
 Veterans' Assistance Officer, G-21; 13, Investigator.

NOTES

Note 1. Positions in the Public Works Laboratory are to be reclassified to new titles which will be announced later.
 Note 2. Campsite Construction Foreman G-11 is to be eliminated by reclassification of some positions to Senior Park Superintendent R-12 and others to Principal Park Superintendent R-15.
 Note 3. Compensation Claims Referee is in the exempt class. The Director of Classification and Compensation is not empowered to allocate exempt class positions.
 Note 4. Construction Foreman G-16 is to be eliminated by reclassification of some positions to Senior Maintenance Supervisor R-16 and others to Maintenance Supervisor R-14.
 Note 5. Vacant position, not to be allocated pending clarification of duties and of organizational relationships to existing filled positions.
 Note 6. Not to be allocated. The Director of Classification and Compensation is not empowered to allocate part-time positions.
 Note 7. To be eliminated by reclassification of one position to Maintenance Man R-7 and the other to Mail and Supply Clerk R-3.
 Note 8. To be eliminated by reclassification of one position to Investigator R-13 and the other to Professional Education Aide R-14.
 Note 9. Junior Housemother is in the exempt class. The Director of Classification and Compensation is not empowered to allocate exempt class positions.
 Note 10. Mechanical Handyman is to be eliminated by reclassification of positions to various standard titles such as General Mechanic R-11, Maintenance Man R-7, etc.
 Note 11. To be eliminated by reclassification of some positions to Practical Nurse R-5 and others to Hospital Attendant R-3.
 Note 12. Positions presently classified as Supervising Operating Room Nurse are to be reclassified to Head Nurse or to Supervising Nurse.

DUPLICATE ALLOCATIONS

Duplicate allocations are to be eliminated. These arose from the former practice of allocating exempt labor class positions to both G and LG grades, depending upon the civil service status of individual employees. Under the new schedule, all exempt labor class positions are to be allocated to the grades shown in Part I as follows:

Present title, present grade for employees with competitive or non-competitive status, present grade for employees with exempt labor class status, and new grade for both, given, in that order.

Bindery Helper, G-2, LG-1, 1.
 Bridge Helper, G-2, LG-2, 2.
 Domestic, G-1, LG1, 1.
 Farmhand, G-2, LG-1, 2.
 Kitchen Helper, G-1, LG-1, 2.
 Laboratory Helper, G-2, LG-1, 1.
 Mail and Supply Helper, G-2, LG-1, 1.
 Maintenance Helper, G-2, LG-3, 4.
 Messenger, G-2, LG-1, 1.
 Power Plant Helper, G-2, LG-3, 4.
 Watchman, G-1, LG-3, 2.

This uniformity of allocation does not change the status of individuals who presently are in the competitive or non-competitive class.

Vacation Spots

ROCKAWAY (Seaside) 1, 2, 3 room apts. Housekeeping facilities — refrigerators. Block to beach. WEEK — MONTH — SEASON. As low as \$15 weekly or \$150 season.

M. BLACK

300-12 Beach. Bch. Blvd. NEptune 4-7077

HOLIDAY?

YOU CAN TAKE IT WITH YOU MONTICELLO, POCONO ANYWHERE YOU CARE TO GO. CH 3-9123 John Waggaman

SILVER LAKE HOUSE

Tyler Hill, Pa. Phone Guilford 53 E 410 Cabins with private bath, hot & cold water in house rooms, both overlooking large lake, swimming, boating and fishing, saddle horses, ping pong; all recreations, for large & small. Fresh vegetables from our own farm. Write for rates, pictures, etc. Norman & Edith Dennis

Get Your
STUDY BOOK
 FOR
MOTOR VEHICLE
LICENSE EXAMINER
\$2.50
LEADER BOOK STORE
 97 Duane Street, N. Y. C.

State Pay

(Continued from Page 14)

Junior Gas Engineer, 14, 15.
Junior Graphic Statistician, 11, 10.
Junior Heating and Ventilating Engineer, 14, 15.
Junior Hydraulic Engineer, 14, 15.
Junior Hydro-electric Operator, 5, 7.
Junior Industrial Hygiene Engineer, 14, 15.
Junior Insurance Examiner, 17, 14.
Junior Insurance Policy Examiner, 17, 14.
Junior Insurance Qualifications Examiner, 17, 14.
Junior Land and Claims Adjuster, 17, 15.
Junior Landscape Architect, 14, 15.
Junior Librarian, 9, 10.
Junior Mechanical Draftsman, 4, 6.
Junior Park Engineer, 14, 15.
Junior Personnel Assistant, 9, 10.
Junior Personnel Technician, 9, 10.
Junior Pharmacist, 9, 11.
Junior Photographer, 7, 8.
Junior Planning Delineator, 14, 14.
Junior Plumbing Engineer, 14, 15.
Junior Public Records Analyst, 9, 10.
Junior Rates Examiner, 8, 10.
Junior Rent Examiner, 9, 9.
Junior Sanitary Chemist, 9, 10.
Junior Sanitary Engineer, 14, 15.
Junior Scientist, 14, 14.
Junior Soils Engineer, 14, 15.
Junior Statistician, 11, 10.
Junior Tax Examiner, 10, 10.
Junior Tax Valuation Engineer, 14, 15.
Junior Utility Rates Analyst, 9, 10.
Junior Valuation Engineer, 14, 15.
*Key Punch Operator, 2, 4.
Kitchen Helper, LG-1, 2.
Kitchenkeeper, 15, 14.
Kosher Food Inspector, 11, 11.
Labor Corporations Investigator, 12, 13.
Labor Elections Assistant, 8, 10.
Labor Elections Supervisor, 22, 18.
Labor Mediator, 27, 24.
Labor Relations Examiner, 22, 18.
Laboratory Aide, 3, 5.
Laboratory Animal Caretaker, 4, 4.
Laboratory Caretaker, 2, 3.
Laboratory Equipment Designer, 17, 15.
Laboratory Helper, LG-1, 1.
Laboratory Illustrator and Photographer, 16, 15.
Laboratory Mechanician, 11, 11.
Laboratory Secretary, 7, 8.
Laboratory Technician, 6, 8.
Laboratory Worker, 3, 4.
Laborer Foreman, 6, 8.
Landscape Aide, 10, 11.
Landscape Architect, 20, 19.
Launderer, 2, 3.
Laundry Consultant, 22, 19.
Laundry Supervisor, 7, 9.
Law Assistant, 9, 10.
Law Department Investigator, 19, 16.
*Law Records Supervisor, 25, 20.
Legal Research Assistant, 25, 23.
Library Assistant, 7, 7.
License Enforcement Officer, 25, 22.
License Examination Technician, 23, 20.
License Inspector, 9, 9.
License Investigator, 14, 13.
Lieutenant, 19, 17.
Lieutenant, Park Patrol, 18, 16.
Liquor Authority Field Representative, 20, 15.
Local Assessment Examiner, 14, 10.
Locksmith, 8, 9.
Machinist, 9, 11.
Machinist Foreman, 12, 13.
Mail and Supply Clerk, 2, 3.
Mail and Supply Helper, LG-1, 1.
Maintenance Foreman, 11, 13.
Maintenance Helper, LG-3, 4.
Maintenance Man, 5, 7; Excludes Maintenance Man (Power Plant), to be reclassified to Power Plant Helper R-4.
Maintenance Supervisor, 13, 14.
Managing Editor, Industrial Bulletin, 29, 25.
Managing Editor, New York State Conservationist, 28, 25.
Marine Engineer, 10, 11.
Marine Fireman, 5, 7.
Marine Fisheries Aide, 8, 7.
Marine Fisheries Protector, 6, 7.
*Marine Fisheries Sanitarian, 27, 23.
Marine Oiler, 5, 6.
Maritime College Business Officer, 28, 26.
Market Reporter, 15, 14.
Marketing Cooperative Specialist, 16, 15.
Marketing Facilities Specialist, 16, 15.
Marketing Investigator, 11, 11.
Marketing License Inspector, 9, 9.
Mason and Plasterer, 9, 11.

Mason and Plasterer Foreman, 14, 13.
Master-at-Arms, 11, 11.
Matron, 6, 8.
Meat Cutter, 8, 8.
Meat Inspector, 11, 11.
Mechanical Equipment Inspector, 20, 15.
Mechanical Stores Clerk, 2, 4.
Medical Defense Hospital Consultant, 40, 32.
Medical Defense Training Supervisor, 25, 23.
Medical Illustrator, 16, 15.
Medical Records Librarian, 9, 10.
Medical Technician, 7, 8.
Mental Health Consultant, 14, 14.
Mental Hygiene Publications Editor, 25, 23.
Messenger, LG-1, 1.
Military Instructor, 10, 10.
Milk Accounts Examiner, 14, 14.
Milk Control Hearing Representative, 18, 16.
Milk and Food Inspector, 11, 11.
Milk Inspector, 11, 11.
Mine and Tunnel Inspector, 12, 13.
Motion Picture Inspector, 11, 10.
Motion Picture Reviewer, 17, 16.
Motor Carrier Investigator, 12, 12.
Motor Carrier Referee, 25, 23.
Motor Equipment Maintenance Foreman, 11, 13.
Motor Equipment Maintenance Supervisor, 19, 18.
Motor Equipment Repairman, 8, 11.
Motor Vehicle Inspector, 15, 13.
Motor Vehicle License Examiner, 11, 11.
Motor Vehicle Operator, 4, 6.
Motor Vehicle Referee, 25, 23.
Municipal Research Assistant, 14, 14.
Museum Education Supervisor, 14, 14.
Museum Exhibits Designer, 13, 13.
Museum Exhibits Planner, 20, 18.
Museum Instructor, 9, 10.
Museum Technical Apprentice, 3, 4.
Musical Instrument Repairman, 9, 10.
Narcotics Investigator, 17, 15.
Nurse-Anesthetist, 12, 13.
Nurseryman, 5, 6.
Nutritionist, 14, 14.
Occupational Instructor, 5, 6.
Occupational Therapist, 9, 10.
Occupational Therapy Aide, 2, 4.
Office Attendant, 2, 3.
Office Machine Operator, 2, 3; Excludes the following, to be reclassified: Office Machine Operator (Billing) G-4 to Billing Machine Operator R-4; Office Machine Operator (Bookkeeping), G-2 to Bookkeeping Machine Operator R-4; Office Machine Operator (Key Punch) G-2 to Key Punch Operator R-4.
On-The-Job Training Program Evaluator, 22, 20.
Orthopedic Shoemaker, 8, 11.
Orthoptic Technician, 9, 8.
Painter, 8, 10.
Painter Foreman, 11, 12.
Paper Machine Operator, 7, 8.
Pari-Mutuel Examiner, 14, 14.
Park Caretaker, 2, 4.
Park Engineer, 20, 19.
Park Foreman, 6, 8.
Park Maintenance Supervisor, 20, 18.
Park Patrolman, 10, 11.
Park Ranger, 5, 7.
Park Sanitation Superintendent, 14, 13.
Park Superintendent, 6, 8.
Parkway Foreman, 8, 8.
Parole District Assistant Director, 23, 21.
Parole District Director, 28, 25.
*Parole District Senior Director, 28, 27.
Parole Employment Officer, 14, 13.
Parole Employment Supervisor, 20, 18.
Parole Officer, 15, 14.
Pasteurization Plant Operator, 4, 5.
Pathologist, 20, 20.
Payroll Auditor, 11, 12.
Payroll Examiner, 12, 12.
Personnel Administrator, 15, 14.
Personnel Relations Counsellor, 20, 18.
Personnel Technician, 14, 14.
Pharmacist, 14, 14.
Pharmacy Aide, 3, 4.
Pharmacy Inspector, 16, 15.
Photofluorographer, 5, 6.
Photographer, 11, 11.
Photographic Technician, 7, 8.
Physical Therapist, 9, 10.
Physical Therapy Aide, 2, 4.
Physical Therapy Technician, 7, 8.
Physician, 22, 20.
Physiotherapist, 7, 8.
Planning Delineator, 20, 18.
Planning Technician, 14, 14.
Planting Foreman, 6, 8.
Plumber and Steamfitter, 9, 11.
Plumber and Steamfitter Foreman, 12, 13.
Poultry Marketing Specialist, 16, 15.
Power Plant Helper, LG-3, 4.
Practical Nurse, 3, 5.
Principal Account Clerk, 14, 14.

Principal Account Stenographer, 10, 11.
Principal Accountant, 32, 27.
Principal Actuarial Clerk, 11, 12.
Principal Actuary, 34, 28.
Principal Architect, 39, 31.
Principal Attorney, 39, 31.
Principal Audit Clerk, 14, 14.
Principal Bank Examiner, 34, 27.
Principal Biochemist, 32, 27.
Principal Budget Examiner, 39, 31.
Principal Building Construction Engineer, 39, 31.
Principal Building Electrical Engineer, 39, 31.
Principal Building Mechanical Engineer, 39, 31.
Principal Building Structural Engineer, 39, 31.
Principal Cancer Dental Surgeon, 32, 29.
Principal Cancer Research Scientist, 40, 32.
Principal Case Analyst, 32, 27.
Principal Civil Engineer, 39, 31.
Principal Claims Engineer, 39, 31.
Principal Clerk, 10, 11.
Principal Clinical Psychiatrist, 40, 32.
Principal Compensation Claims Examiner, 27, 23.
Principal Compensation Clerk, 12, 12.
Principal Compensation Examining Physician, 40, 32.
Principal Compensation Reviewing Examiner, 27, 23.
*Principal Dentist, 29, 29.
Principal Dictating Machine Transcriber, 10, 11.
Principal Disability Benefits Examiner, 25, 21.
Principal Economist, 32, 27.
Principal Editorial Clerk, 11, 11.
Principal Electric Engineer, 39, 31.
Principal Employment Consultant, 30, 24.
Principal Engineering Examiner, 32, 27.
Principal Examiner of Methods and Procedures, 32, 27.
Principal Examiner of Municipal Affairs, 32, 27.
Principal Examiner of State Payrolls, 28, 26.
Principal File Clerk, 10, 11.
*Principal Fingerprint Clerk, 10, 11.
Principal Insurance Collector, 25, 22.
Principal Insurance Examiner, 35, 29.
Principal Keeper, 28, 24.
*Principal Key Punch Operator, 10, 11.
Principal Laboratory Animal Caretaker, 10, 11.
Principal Laboratory Secretary, 15, 14.
Principal Laboratory Technician, 10, 11.
Principal Laboratory Worker, 10, 11.
Principal Law Clerk, 14, 12.
Principal Librarian, 32, 27.
Principal Library Supervisor, 32, 27.
Principal Local Assessment Examiner, 32, 23.
Principal Mail and Supply Clerk, 10, 11.
Principal Marine Stores Clerk, 12, 12.
Principal Medical Bacteriologist, 40, 32.
Principal Office Machine Operator, 10, 11; Excludes the following, to be reclassified as shown below: Principal OMO (Key Punch) G-10 to Principal Key Punch Operator R-11; Principal OMO (Offset Printing) G-10 to Principal Offset Printing Machine Operator, R-11; Principal OMO (Printing) G-10 to Senior Printing Machine Operator R-8; Principal OMO (Reproduction) G-12 to Principal Offset Printing Machine Operator R-11; Principal OMO (Tabulating) G-12 to Principal Tabulating Machine Operator R-12.
*Principal Offset Printing Machine Operator, 11.
Principal Park Engineer, 39, 31.
Principal Park Superintendent, 16, 15.
Principal Pathologist, 40, 32.
Principal Payroll Auditor, 25, 22.
Principal Payroll Examiner, 21, 19.
Principal Personnel Technician, 32, 27.
Principal Printing Clerk, 11, 11.
Principal Public Health Physician, 40, 32.
Principal Public Welfare Physician, 34, 29.
Principal Publicity Agent, 28, 24.
Principal Real Estate Appraiser, 35, 26.
Principal Rehabilitation Counsellor, 28, 24.
Principal Rent Examiner, 25, 22.
Principal Research Analyst, 39, 31.
Principal Research Scientist, 40, 32.
Principal Retirement Claims Examiner, 27, 23.
Principal Safety Service Representative, 25, 22.
Principal Sanitary Engineer, 39, 31.

Principal, School of Nursing, 20, 18.
Principal Scientist, 33, 27.
Principal Self-Insurance Examiner, 27, 23.
Principal Soils Engineer, 39, 31.
Principal Special Tax Investigator, 31, 27.
Principal Stationary Engineer, 16, 16.
*Principal Statistician, 27.
Principal Statistics Clerk, 11, 12.
Principal Stenographer, 10, 11.
Principal Stores Clerk, 12, 12.
*Principal Tabulating Machine Operator, 12, 12.
Principal Tax Collector, 25, 22.
Principal Telephone Operator, 10, 11.
Principal Thoracic Surgeon, 40, 32.
Principal Traffic Clerk, 12, 11.
Principal Transportation Engineer, 39, 31.
Principal Underwriter, 27, 23.
Principal Unemployment Insurance Reviewing Examiner, 27, 23.
Principal Welfare Consultant, 32, 27.
Principal X-Ray Technician, 14, 14.
Printer, 13, 12.
Printer-Compositor Apprentice, 2, 4.
Printing Shop Assistant Foreman, 16, 15.
Printing Shop Assistant Superintendent, 18, 17.
Printing Shop Foreman, 20, 18.
Printing Shop Helper, LG-3, 2.
Printing Shop Superintendent, 22, 20.
Prison Guard, 10, 11.
Probation Examiner, 18, 18.
Process Server, 4, 5.
*Professional Education Aide, 14, 14.
Projectionist, 19, 11.
Proofreader, 4, 4.
Property Manager, 22, 20.
Psychiatric Museum Curator, 8, 8.
Psychological Assistant, 9, 10.
Public Buildings Maintenance Supervisor, 11, 13.
Public Buildings Management Supervisor, 28, 24.
Public Health Dental Hygienist, 9, 10.
Public Health Education Production Supervisor, 25, 22.
Public Health Educator, 14, 14.
Public Health Nurse, 8, 9.
Public Records Analyst, 14, 14.
Public Relations Aide, 11, 10.
Public Works Safety Director, 33, 25.
Publications Production Assistant, 14, 14.
Publications Production Supervisor, 20, 18.
Publicity Agent, 16, 14.
Publicity Aide, 11, 10.
Publicity Production Manager, 32, 26.
Pulverum Disease Control Agent, 9, 10.
Pumping Plant Operator, 5, 6.
Purchase Specifications Writer, 17, 15.
Purchasing Agent, 20, 18.
*Purchasing Specialist, 27, 22.
Racing Assistant, 25, 17.
Racing Equipment Clerk, 2, 3.
*Racing Examiner, 20, 19.
Racing Inspector, 19, 10.
Radio-Physicist, 14, 14.
Radio Technician, 12, 13.
Railroad Electric Inspector, 19, 15.
Railroad Equipment Inspector (Electric), 15, 15.
Railroad Equipment Inspector (Steam), 17, 15.
Railroad Inspector, 15, 13.
Railroad Track and Structure Inspector, 15, 14.
Realty Advisor, 25, 22.
Realty Consultant, 30, 25.
*Records Management Analyst, 25, 23.
Recreation Instructor, 9, 10.
Recreation Supervisor, 15, 15.
Refrigeration Plant Operator, 8, 10.
Regents Night Printer, 16, 15.
Regents Printer, 14, 14.
Regional Health Director, 40, 32.
Regional Public Health Nurse, 23, 20.
Registrar, 10, 11.
Rehabilitation Counselor, 17, 15.
Rehabilitation Interviewer, 8, 8.
*Rent Accountant, 14, 14.
Rent Examiner, 14, 13.
Rent Inspector, 10, 10.
*Research Aide, 8, 10; New title, for positions now classified as Junior Education Supervisor (Research) G-9 and Junior Research Aide G-8. The R-10 allocation does not apply to the existing position of Research Aide (Harness Racing), G-6.
Research Analyst, 30, 18.
Research Assistant, 14, 14.
Research Director of Saratoga Springs Reservation, 27, 24.
†Research Scientist, 20, 18.
Rigger, 8, 10.
Roofer and Tinsmith, 8, 10.
Ruling Machine Operator, 8, 9.
Safety Consultant, 21, 19.
†Safety Coordinator, 23, 20.
Safety Field Representative, 15, 16.
Safety Service Representative, 11, 12.

Sales Representative for the Blind, 10, 11.
Sales Supervisor for the Blind, 18, 16.
Sanitary Chemist, 14, 14.
Sawmill Operator, 7, 9.
Scientific Aide, 9, 10.
School Transportation Supervisor, 33, 19.
Scientist, 20, 18.
Seamstress, 1, 2.
Secretarial Assistant, 15, 14.
Secretarial Stenographer, 10, 11.
Secretary of Commission of Correction, 32, 25.
Secretary to Commissioner of Health, 15, 14.
Secretary to Department of State, 20, 18.
Secretary-Engineer, 39, 30.
Secretary to Long Island Park Commission, 32, 27.
Secretary to Merit Award Board, 25, 18.
Secretary to the New York City Alcoholic Beverage Control Board, 20, 18.
Secretary to Superintendent of Public Works, 15, 14.
Self-Insurance Examiner, 18, 16.
Senior Account Clerk, 7, 8.
Senior Accountant, 20, 18.
Senior Actuarial Clerk, 7, 8.
Senior Actuary, 22, 18.
Senior Administrative Assistant, 25, 23.
Senior Agronomist, 25, 23.
Senior Analytical Chemist, 20, 18.
Senior Apprentice Training Representative, 22, 19.
Senior Aquatic Biologist, 20, 18.
Senior Architect, 25, 23.
Senior Architectural Draftsman, 10, 11.
Senior Architectural Estimator, 25, 23.
Senior Architectural Specifications Writer, 25, 23.
Senior Artist-Designer, 20, 18.
Senior Attorney, 25, 23.
Senior Audit Clerk, 7, 8.
Senior Auditor, 20, 18.
Senior Bacteriologist, 20, 18.
Senior Bank Examiner, 27, 23.
Senior Bedding Inspector, 15, 15.
Senior Beverage Control Investigator, 17, 15.
*Senior Billing Machine Operator, 6, 8.
Senior Biochemist, 20, 18.
Senior Biophysicist, 20, 18.
Senior Biostatistician, 22, 18.
Senior Boiler Inspector, 19, 16.
*Senior Bookkeeping Machine Operator, 6, 8.
Senior Boys' Supervisor, 8, 10.
Senior Budget Examiner, 26, 23.
Senior Building Construction Engineer, 25, 23.
Senior Building Electrical Engineer, 25, 23.
Senior Building Research Engineer, 25, 23.
Senior Building Structural Engineer, 25, 23.
Senior Business Consultant, 25, 22.
Senior Business Officer, 33, 29.
Senior Cancer Research Anesthesiologist, 28, 25.
Senior Cancer Research Internist, 28, 25.
Senior Cancer Research Pathologist, 28, 25.
Senior Cancer Research Radiologist, 28, 25.
Senior Cancer Research Roentgenologist, 28, 25.
Senior Cancer Research Scientist, 28, 24.
Senior Cancer Research Surgeon, 28, 25.
*Senior Cattle Appraiser, 20, 15.
Senior Chemical Engineer, 25, 23.
Senior Chemist, 20, 18.
Senior Civil Engineer, 25, 23.
Senior Claims Examiner, 25, 23.
Senior Claims Examiner, 20, 18.
Senior Clerk, 6, 7.
Senior Clinical Psychiatrist, 28, 25.
Senior Clinical Psychologist, 20, 18.
Senior Colony Supervisor, 9, 10.
Senior Commodities Tax Examiner, 17, 17.
Senior Compensation Claims Auditor, 20, 18.
Senior Compensation Claims Examiner, 20, 16.
Senior Compensation Claims Investigator, 16, 15.
Senior Compensation Investigator, 13, 14.
*Senior Compensation Reviewing Examiner, 18, 16.
Senior Conservation Publications Editor, 25, 22.
Senior Construction Safety Inspector, 19, 16.
Senior Construction Wage Rate Investigator, 16, 14.
Senior Corporation Tax Examiner, 18, 17.
Senior Curator, 17, 16.
Senior Damages Evaluator, 18, 17.
Senior Dentist, 25, 23.
Senior Dictating Machine Transcriber, 6, 7.
Senior Dietitian, 12, 13.
Senior Director of Mental Hospital, 48, 36.
Senior Director of State School, 48, 36.
Senior Director of Welfare Area Office, 32, 27.
(Turn to Page 1)