

Sports Chatter

By Pete Marchetta



The football season is fast coming to a close, and a hard fight for the championship looms for the coming week.

On Tuesday afternoon, the occupants of top spot in the football league, the Dorm A Trojans and Potter Club meet in what will undoubtedly be the deciding contest for the championship.

This game promises to be a "natural." Potter, defending champion, has its eye on the second consecutive football championship, and in keeping the trophy another year.

Both squads should be at full strength for the contest. The Dorm boys boast weight and a good running attack centered about Tassoni.

Potter, on the other hand, has many capable substitutes who can wear down and tire the opposition for the first stringers.

The game of last week was over-ruled by Intramural Council and the game remains as a 6-6 tie.

Referring to the rule book to Rule 3, Section 4, Article 1: "The timer shall stop his watch when a signal indicates that the ball is out of bounds."

WAA Tennis Tourney Nears Semi-Final Stage

There are four more games to be played in the women's tennis tournament before the deadline, Tuesday, October 27.

There will be a week-end at Camp Johnston soon. Pat Frey is in charge of the camp and all those interested should contact her.

SPORT TOGS SNAPPY MEN'S SHOP

SHIRTS SNAPPY MEN'S SHOP

TIES SNAPPY MEN'S SHOP

SPORT HOSE SNAPPY MEN'S SHOP

Potter Club, Trojans Triumph To Tie For Football Title

KDR Scores Over Dorm B For Second Win As Finks Suffer Losses To Potter and SLS; Shieks Gain First Victory By Defeating Ramblers

Scoring at will, and stopping KB's vaunted attack, Potter Club yesterday scored an overwhelming 43-6 victory.

In its first game this week, Potter Club scored 5 of Potter's 7 touchdowns. The EEP boys scored in every period.

Behind 6-0 at half time, a spirited KDR went to town with a passing attack that temporarily gave them a 7-6 lead, but they finally succumbed to the sharp shooting of Tassoni to lose 12-7.

Starting the second quarter with a 40-yard punt return by Evans to the Fink 23, EEP moved to its first score.

Coasting on a thirteen point lead built up in the first half, KDR found itself up to its neck in Dorm "B" threats throughout the second half but kept its goal line unscathed to win, 13-0.

Standings to Date table with columns W, L, T, P, S and rows for EEP, Trojans, KB, SLS, KDR, Finks, Shieks, Ramblers.

Midway in the first period, Leonard passed to McNamara on a play and retained two-thirds the length of the field to bring KDR its first touchdown.

In the final period a Chellimi interception on the KDR 25 started Dorm "B" on its way again.

WAA Banquet Postponed

Win Jones, president, announces that the annual WAA banquet which was to have been held on Tuesday October 27, as was stated in the Freshman Handbook, has been postponed.

There will be a week-end at Camp Johnston soon. Pat Frey is in charge of the camp and all those interested should contact her.

SPORT TOGS SNAPPY MEN'S SHOP

SHIRTS SNAPPY MEN'S SHOP

TIES SNAPPY MEN'S SHOP

SPORT HOSE SNAPPY MEN'S SHOP

W. M. WHITNEY & CO. DEPARTMENT STORE

Soph Class Leads in Rivalry Frosh Hoopsters Continue Practice

The class of '45 has managed to take a short but early lead in rivalry. With the present score standing at 3 to 2, the final outcome, of course, still to be reckoned by Fate and if the spirit shown by both so far continues, it looks as though it will be tough and go until Moving Up Day.

The freshmen started strong a week ago today when they outsmarted, outran and outpushed the Sophomores in pushball to the tune of a 15-6 victory.

Many difficulties have been encountered in drawing up a schedule for the Junior Varsity. Union College Frosh and Albany Academy opponents of the Frosh in previous years, cannot be played this year.

The system of solicitors will again be followed this year. Students will be contacted through their group houses.

Distribution of Funds

Some of the money will be contributed to the World Service Fund which aids those students who are now war prisoners in different countries.

Receipts will be given for all amounts of money collected. Tags will be placed on students so that no one will be approached twice.

Sol Greenberg, '43, chairman says, "These are times when the money is vitally needed, more so than ever before."

Assisting Greenberg are Emily Blasiar, '43, Don Vanas, '43, Harold Ashworth, '44, and William Tucker, '44.

Group to Probe Annex Situation

As a result of recent action taken by the State College News and Forum regarding the quality of sandwiches served in the Annex, Dr. John M. Sayles, President of the College, will appoint a joint faculty-student committee to investigate the situation.

At its Wednesday meeting, Forum passed a resolution to support the News in any action which it might take.

From November 2 to November 11, Campus Chest is conducting its second annual drive.

Signum Laudis Members

Dr. John M. Sayles disclosed the names of the first group of Signum Laudis members.

Dr. John M. Sayles disclosed the names of the first group of Signum Laudis members.



State College News

Annual Campus Drive to Start Coming Monday

Greenberg Will Use Solicitor System Again

Campus Chest, under the direction of Sol Greenberg, '43, is conducting its second annual drive from November 2 through November 10.

The system of solicitors will again be followed this year. Students will be contacted through their group houses.

Distribution of Funds

Some of the money will be contributed to the World Service Fund which aids those students who are now war prisoners in different countries.

Receipts will be given for all amounts of money collected. Tags will be placed on students so that no one will be approached twice.

Sol Greenberg, '43, chairman says, "These are times when the money is vitally needed, more so than ever before."

Assisting Greenberg are Emily Blasiar, '43, Don Vanas, '43, Harold Ashworth, '44, and William Tucker, '44.

Group to Probe Annex Situation

As a result of recent action taken by the State College News and Forum regarding the quality of sandwiches served in the Annex, Dr. John M. Sayles, President of the College, will appoint a joint faculty-student committee to investigate the situation.

At its Wednesday meeting, Forum passed a resolution to support the News in any action which it might take.

From November 2 to November 11, Campus Chest is conducting its second annual drive.

Signum Laudis Members

Dr. John M. Sayles disclosed the names of the first group of Signum Laudis members.

Stote Loses Hal As U. S. Changes Singer Into Sailor

On November 10, Hal Singer, vice-president of Potter Club, president of Interfraternity Council, and treasurer of '43, is leaving State College.

Reporting at Northwestern, he will receive four months of training which will then entitle him to the commission of ensign.

When asked why he didn't transfer to the air corps, Singer replied, "I can't fly without a plane."

It's unnecessary to say that Hal will be missed. He has his place here at State just as assuredly as we know he's what Uncle Sam is looking for.

KDR, Potter, KB Will Hold Parties

Informality, Comfort Keynote of Fun Frolics

Pulling rabbits from a hat, breaking unbreakable bonds, and even making a freshman disappear, will be the simple task of the magician obtained by Potter Club to provide only a portion of the entertainment at their smoker on Sunday, October 25, to 12 p.m., for their first rush affair of the year.

Glaring pumpkins, rosy apples, brown corn stalks, and terrifying witches will provide the atmosphere for the KDR and KB "Halloween parties, 8:30 to 12 p.m., tomorrow night at the KDR house and the Lounge respectively.

"We will take you back to those wonderful days of your childhood when you had not a worry in the world!" explained in unison Harold Goldstein, '45, KB Master of Ceremonies, and Fred Beyer, '44, Chairman of the KDR party.

Assisting Greenberg are Emily Blasiar, '43, Don Vanas, '43, Harold Ashworth, '44, and William Tucker, '44.

Group to Probe Annex Situation

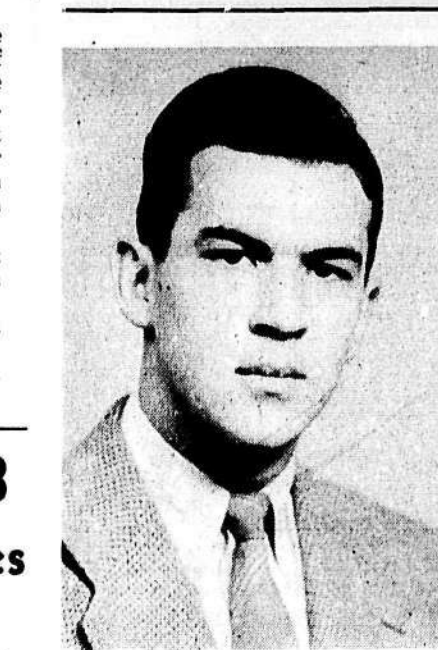
As a result of recent action taken by the State College News and Forum regarding the quality of sandwiches served in the Annex, Dr. John M. Sayles, President of the College, will appoint a joint faculty-student committee to investigate the situation.

At its Wednesday meeting, Forum passed a resolution to support the News in any action which it might take.

From November 2 to November 11, Campus Chest is conducting its second annual drive.

Signum Laudis Members

Abrams, Wood Swamp LaFaro In Freshman Presidential Election



Dale Wood, left, and Stanley Abrams, right, the two remaining candidates for the freshman presidency who will battle it out in final revotes Monday.

Sororities Induct New Members

Formal initiations have been held for the last year's pledges of several of the sororities.

Psi Gamma held formal initiation on Sunday, October 25, to 12 p.m., for their first rush affair of the year.

Glaring pumpkins, rosy apples, brown corn stalks, and terrifying witches will provide the atmosphere for the KDR and KB "Halloween parties, 8:30 to 12 p.m., tomorrow night at the KDR house and the Lounge respectively.

"We will take you back to those wonderful days of your childhood when you had not a worry in the world!" explained in unison Harold Goldstein, '45, KB Master of Ceremonies, and Fred Beyer, '44, Chairman of the KDR party.

Assisting Greenberg are Emily Blasiar, '43, Don Vanas, '43, Harold Ashworth, '44, and William Tucker, '44.

Group to Probe Annex Situation

As a result of recent action taken by the State College News and Forum regarding the quality of sandwiches served in the Annex, Dr. John M. Sayles, President of the College, will appoint a joint faculty-student committee to investigate the situation.

At its Wednesday meeting, Forum passed a resolution to support the News in any action which it might take.

From November 2 to November 11, Campus Chest is conducting its second annual drive.

Signum Laudis Members

Debate Council To Discuss War

The College Debate Council is to sponsor a discussion before the War Education Forum of Albany on Wednesday night, November 4 at 7:30 in Joseph Henry Memorial Hall.

The theme of the evening's speeches will be mainly the second front in Europe with particular emphasis on Russia's part in this proposed move in the war.

Four members of the Council will speak, considering the different angles of the military plan. Joseph Higgins, '44, will discuss the military problems which confront Russia today.

Alpha Epsilon Phi has received one new member, Sue Weissblum, '44, this year.

Seven girls, Mary Elizabeth Crouch, '42, Mary Ellen Munson, Hazel Ravelle, Angela Fabrizio, June Irwin, Jayne Cheney, and Yefkin Derbedrosian, Sophomores, recently became members of Gamma Kappa Phi.

Three girls, Osnif Serabien, '44, Jacquelin Shaw, '43, and Marie Quinn, '45, became pledges of the same sorority.

At their meeting, Beta Zeta inducted four Sophomores, Janet Brunton, Ruth Blinke, Jean Offhouse and Barbara Putnam.

Group to Probe Annex Situation

As a result of recent action taken by the State College News and Forum regarding the quality of sandwiches served in the Annex, Dr. John M. Sayles, President of the College, will appoint a joint faculty-student committee to investigate the situation.

At its Wednesday meeting, Forum passed a resolution to support the News in any action which it might take.

Class Will Revote On Six Offices; Balloting Monday

In an unexpected maneuver, two men, Stanley Abrams and Dale Wood, eliminated a woman candidate, Betty LaFaro, from the presidential slate in yesterday's freshman class balloting.

Two men dared to run against one woman in a class where an overwhelming majority of the members are women. Total balloting was 188, a greater percentage of votes than in the first election held last Monday.

Revotes, which will take place Monday in the Commons from 9 A. M. to 4 P. M., still must be held for six of the ten elective positions in the class.

Those offices requiring revotes and the candidates for those offices are as follows: President, Stanley Abrams, Dale Wood; Vice-President, Robert Lee, Terrence Smyth; Secretary, Anita Pedtsch, Eleanor Smith; Treasurer, Joyce McDonald, Elizabeth McGrath, Robert Wilcox; Song Leader, Mary Lou Casey, Arthur Russell; Cheerleader, Alice McGowan, Betty Williams.

Those already elected to office are: Robert Sullivan, MAA Representative; Ned Timpane, Publicity Chairman; Jean Turner, WAA Representative; Georgette Dunn, WAA Manager.

Mysskania, Senior Campus Honorary Society, released for publication the numerical results of the four elected offices. They are as follows: (asterisk following name indicates the one elected).

MAA Representative—First Ballot: Sullivan 62, Gillen 52, Cummings 28, blank 14; Second Ballot: Sullivan 88*, Gillen 80, blank 20.

WAA Representative—First Ballot: Turner 73*, Shoup 70, blank 13.

WAA Manager—First Ballot: Dunn 76*, Van Aulken 61, blank 19.

Publicity Chairman—First Ballot: Timpane 52, Biviano 36, Scudder 21, Propper 13, Tontarski 11, Boylan 9, Cohl 5, Hill 4, blank 5; Second Ballot: Timpane 104*, Biviano 74, blank 10.

Frosh to Parade, Sing in Assembly

The traditional frosh parade around the auditorium to prove their talents, musical and otherwise, will be the highlights of today's assembly program.

Feature of last year's frosh sing, has not been satisfactory and therefore this method must be used in order to make an orchestra possible this year.

On the other hand, there has been too large a response of clarinetists. Snow announces that competitive try-outs will be held shortly to limit the clarinets to two.

At present the orchestra is rehearsing for a concert to be held in the future. "Prelude to the 3rd Act of Lohengrin," "Emperor Waltz," and the "Grand March from Aida" are among the numbers. These are in the original editions.

Coca-Cola advertisement featuring a woman and a bottle of Coke with the text "How about a Coke date?" and "We've been 'goin' steady' a long time, you and I. You see, I'm a symbol of the life and sparkle of Coca-Cola. Therefore, I speak for Coke. I like your company. I offer something more than a thirst-quenching drink. It's refreshing. Yes sires...it's got that extra something you can't get this side of Coca-Cola itself. Let's get together. Make it a Coke date."

W. M. WHITNEY & CO. DEPARTMENT STORE NORTH PEARL STREET, ALBANY, N. Y. ALBANY'S SHOPPING CENTER FOR 85 YEARS

SPORT TOGS SNAPPY MEN'S SHOP SHIRTS SNAPPY MEN'S SHOP TIES SNAPPY MEN'S SHOP SPORT HOSE SNAPPY MEN'S SHOP 222 CENTRAL AVE.

'Meditate, Cooperate, Donate' Is Slogan of Campus Chest Drive by Sunna Cooper

Are you one of those who would like to do more in the war effort, or do you just talk about it? Are you the Joe College who drives his car unnecessarily, or do you take the bus when possible?

From November 2 to November 11, Campus Chest is conducting its second annual drive. Each student will be expected to contribute fifty cents—or more.

The orchestra must be a balanced organization," according to Earle Snow, '44, director; therefore outside players from Vincentian Institute, Albany High School and Milne High School will be used to round out the orchestra.

At present the orchestra is rehearsing for a concert to be held in the future. "Prelude to the 3rd Act of Lohengrin," "Emperor Waltz," and the "Grand March from Aida" are among the numbers. These are in the original editions.