

State College News

Established by the Class of 1918
The Undergraduate Newspaper of New York State
College for Teachers

THE NEWS STAFF

- MARION C. HOWARD, Editor-in-Chief
162 Western Avenue, 3-0975
- WILLIAM C. NELSON, Managing Editor
Kappa Delta Rho, 117 S. Lake Avenue, 2-4314
- JEAN CRAIGMILE, Advertising Manager
Phi Delta, 20 S. Allen Street, 2-1437
- KATHRYN HAUG, Finance Manager
Gamma Kappa Phi, 21 N. Main Avenue, 2-4144
- DAN VAN LEUVAN, Associate Managing Editor
401 Western Avenue, 2-2650
- RUTH WILLIAMS, Associate Managing Editor
Beta Zeta, 680 Madison Avenue, 2-3266
- MILDRED FACER, Circulation Manager
Phi Lambda, 516 Mercer Street, 2-6533

SENIOR ASSOCIATE EDITORS: Almira Russ, Bessie Steklar, and Thelma Smith, seniors; Ruth Brooks and Valentine Reutovich, juniors. DESS EDITORS: Karl Ebers, Mary Hudson, Emma Rogers, and Glenn Ungerer. REPORTERS: Beatrice Coe and Rose Rosenbeck, seniors; Bessie Hartman, Emily Hurlbut, Olga Hyatt, Dorothy Meyer, Esther Rowland, Helen Smith, and Mary Torrens, juniors; Rosella Argente, Elaine Baird, Phyllis Bosworth, Margaret Bowes, Loretta Buckley, Frances Green, Elsa Calkins, Hulda Classen, Doris Coffin, Margaret Dietz, Frances Donnelly, Ruth Edmunds, Rose Elinor, Blodwyn Evans, Jacqueline Evans, Editha Farrell, Margaret Flanigan, Merle Getney, Marie Geisler, Elizabeth Griffin, Elizabeth Hobbie, Dorothy Herick, Aubrey Kalbaugh, Virginia Chappell, LaVonne Kelsey, Jeanne Lesnick, Janet Lewis, Martha Martin, Eleanor Nottingham, Evelyn O'Brien, Charlotte Beckow, Dorothy Smith, Edith Sobel, Nina Ullman, and Elizabeth Whitman, sophomores. ASSISTANT FINANCE MANAGERS: Julia Riel, '35. ASSISTANT CIRCULATION MANAGERS: Margaret Walsworth, '35. ASSISTANT ADVERTISING MANAGERS: Beatrice Burns and Elizabeth Premer, juniors; DENNIS STAFF: William Davidge, Edith Garrison, juniors; and Mary Clichman and Carolyn Simons, sophomores.



Associated Collegiate Press
1933 (National Scholastic Press Association) 1914

Published every Friday in the college year by the Editorial Board representing the Student Association. Subscriptions, \$2.25 per year, single copies, ten cents. Delivered anywhere in the United States. Entered as second class matter at postoffice, Albany, N. Y.

The News does not necessarily endorse sentiments expressed in contributions. No communications will be printed unless the writers' names are left with the Editor-in-Chief of the News. Anonymity will be preserved if so desired. The News does not guarantee to print any or all communications.

PRINTED BY C. F. WILLIAMS & SON, INC., ALBANY, N. Y.

Vol. XVIII, No. 12 Feb. 23, 1934 Albany, N. Y.

MAY CHANGE RING

Today, in student assembly, the question of the proposed change in tradition will again arise with regard to the junior ring. Whether or not this revision of the old tradition will be adopted is a matter entirely subject to the will of the student body.

A survey of records shows that the exact origin of the junior ring tradition is obscure. In 1921, however, a motion, originating with Myskania, was put before the assembly that the junior ring be standardized. A ring committee, consisting of the four class presidents and one other member from each class, investigated the rings which previous classes had secured. The motion was passed. The junior ring and the ring requirements became a tradition at that time.

For several years now, junior classes have seen the need and advisability of changing the class ring. This year the junior class has wanted to change the ring to one with black onyx stone. The matter was taken up with Myskania; Myskania has accorded this class the privilege of having such a ring. This, however, does not mean that tradition has been changed, Myskania has merely countenanced the exception to the original ring requirements for the one year.

Whether or not this new ring will become the traditional ring rests with the student body. The proposed change will affect the top of the ring, changing the gold seal to an oval seal cut in black onyx. As in previous years, each class will select a suitable shank with the appropriate numerals and design.

The proposed ring is certainly a much better looking ring than the old, heavy, plain gold one. If the old requirements are out of date, why not change them so that other classes might also be benefited? If this change in tradition is not made, the old requirements will again apply to succeeding classes, subject to exceptions allowed by the various Myskanias. It seems advisable, therefore, that the proposed changes be made now.

WHAT TO DO ABOUT IT?

The News has received a letter protesting the lack of provisions for the protection of students from the elements as the pass between Draper Hall and Hawley Library. The recent inclement weather has rendered such protection practically indispensable. Throughout the winter and particularly during the severe snow storm of this week, those desiring to study in the library have been forced to brave sweeping winds and swirling snow on the peristyle in order to study in the hall. On Tuesday, the small indoor passageway between the two buildings was opened up, but the proportions of this passageway are hardly adequate to accommodate the numbers of students who make daily use of the library. We hope and trust that the powers that be are not intending to consign the students to the misery of either route for the remainder of the cold weather.

We deplore presumptuousness at any time, but we deem it not unreasonable to suggest that something should be done to remedy the condition. Consideration of the problem reveals two possible solutions. One is to widen the stairway which forms a part of the indoor passage, since the narrowness of this stairway is the cause of most of the difficulty in that thoroughfare. The other is to enclose the peristyle, as the peristyle between Husted and Richardson halls is enclosed. Obviously, the latter suggestion is more practical.

Our mind is open to any reasonable opposition to this plan. But we feel that the rectitude of our argument is unimpeachable. The circumstance we are discussing is not alone inconvenient; it is dangerous. The remedy suggested is not prohibitively expensive, and there is precedent for it. The administration can not be entirely ignorant of the condition; some members of the faculty must have found occasion to visit the Library this week. The situation should not be allowed to continue as it is any longer than is absolutely necessary.

Books

By M. C. H.

(For sale in the Co-op)

The Mother by Pearl S. Buck, The John Day Company, New York, 302 pages, \$2.50.

With even a deeper breadth of understanding than was shown in *The Good Earth*, Pearl Buck has drawn her characters for her latest novel, *The Mother*. This story is also more simply written, the mechanics helping all the more to create the atmosphere which the author has desired.

The book opens in the kitchen of the small thatched farmhouse where the mother sits on a low bamboo stool behind the earthen stove feeding the fire with grass. She is happy with her lot; her husband is a pretty young man, though not too careful about saving the precious bits of silver so slowly acquired. The old man, though half blind, sits at the doorway all day watching the children while the mother and the man work in the fields.

After a time, however, the man takes their meagre store of silver and wanders off to the city, never to return. The mother's life, once so normal and contented, now becomes a striving existence against almost unsurmountable odds. In time, she too is supplanted by a younger woman who feeds the fire. In spite of the feared results of her great hidden sin, the daughter-in-law bears a man child, and the mother becomes the "Old One," whose job it is to watch the children playing about the doorway.

The book is simple; in its simplicity lies its strength. One section of Chinese peasant life is the scope for this novel, rather than the crowded canvas of *The Good Earth*. The central character, is the "natural" woman, while her life of toil and child-bearing, even her great sin, all are a part of that naturalism. She is indeed symbolic of the normal life of woman, so seldom found in modern novels. One can certainly say of *The Mother*, "truly a great book."

A Modern Tragedy, by Phyllis Bentley. The Macmillan Co. New York, 434 pages, \$2.50.

"The *New York Times*" has dubbed this book "a novel which clarifies our age." This title is very apt because the book certainly does show this age as one of unrest, dissolution, and economic depression.

The novel has for its background the Leeds country of Yorkshire, England. The entire story is centered around the depression and its effect on the cloth manufacturing trades of that vicinity.

Walter Laight, the key character of the book, becomes involved in a swindle, propagated by Leonard Tasker, the typical hard-headed promoter. The characters as well as the scenes give dramatic contrast, for besides Tasker, we find Henry Clay Crossland, an honest, dependable man of the old school. When the company finally goes under, we find an amazing reaction, though a natural one, from these three men; Crossland commits suicide, and Tasker tries to leave the country. Walter, though overwhelmed with the disaster and taken to prison, is given the reassurance of hope. Thus the book comes out all right after all.

Strangely enough Miss Bentley has divided her book into acts and scenes rather than chapters. She has placed at the beginning of the book a table of dramatic personae. She has also given the book more of a dramatic pitch than is found in most novels. It is the type of book which might easily be made into a play, for one can not help but notice how carefully the author has made the scenes as nearly like a stage setting as possible.

New Methods For Ancient History Course Place Stress On Social Studies Aspects

The presentation of ancient history through social science methods constitutes an experiment now being conducted for the first time in Milne High School under the supervision of Dr. Donald V. Smith, assistant professor of history. One of the innovations of this course is that mimeographed project sheets instead of textbooks are used by the pupils. Each one of these sheets treats a unit subject over a long period of time, in fact, from the beginning of civilization to 1789.

These project sheets or units have such titles as "The Christian Church," "Primitive Man," "Communication," "Religion," "The Establishment of an Agrarian Culture," "Social Conflict and Cooperation." Each unit has an introductory note which "sets the stage." An outline follows which covers the field completely. A list of general refer-

NEWS COMPETES FOR 1934 N. S. P. A. CONTEST AWARD

The STATE COLLEGE NEWS has entered the 1934 All-American Newspaper Contest conducted annually by the National Scholastic Press Association in the Department of Journalism at the University of Minnesota, according to Marion Howard, '34, editor-in-chief.

The college newspapers entered in the contest are judged on the writing, choice of type faces, variety and type of headlines, and make-up. Ratings awarded are: All-American, superior; first class, excellent; second class, good; third class, high average; and fourth class, no honors.

In 1927, the News was rated an All-American newspaper. In 1929, the News received an All-American Honor rating. In 1930 and 1933, the News was rated first class.

Communications

Editor, STATE COLLEGE NEWS:
In the opinion of a number of students, the College administration should take cognizance of the problem occasioned by the open peristyle passageway connecting Draper Hall and Hawley Library. Many times during the winter, inclemencies of the weather made it very inconvenient for a great number of students and faculty members to reach the library. Today's storm accentuated a deplorable condition.

First, the stormy weather and accumulated drifts in the passageway well nigh precluded the use of the peristyle. Second, the indoor passageway reluctantly opened by the janitorial staff proved dangerous and very inadequate when students pass to classes. Obviously, this is not the remedy to the problem.

It is the consensus of opinion that the appropriate solution would be the speedy erection of some form of glass covering walls similar to those used at present to great advantage in the peristyle connecting Husted and Richardson halls. I believe that the cost of such a project would not be too great when the comfort of the students and faculty is considered. Perhaps some means of utilizing emergency employment funds could be devised in this project. Certainly, this problem is timely enough and urgent enough to warrant not only the consideration of the administration but also speedy action to alleviate the difficulty.

Yours sincerely,
A Junior,
February 20, 1934.



Calendar

Today
11:10 Student assembly, auditorium, Page hall.

Tonight
8:15 State college, Brooklyn Polytechnic institute basketball game, gymnasium, Page hall.

Sunday
4:00 Lutheran club meeting, Friendship house, 646 State street.
5:30 Memorial club bridge party, Richardson hall.

Monday
8:00 Y.M.C.A. discussion meeting, Lounge, Richardson hall.

Tuesday
4:15 Y.W.C.A. discussion meeting, Lounge, Richardson hall.
5:30 Chemistry club dinner, cafeteria, Husted hall.
8:30 Advanced dramatics class plays, auditorium, Page hall.

Wednesday
3:00 Freshman tea, Lounge, Richardson hall.
3:15 French club meeting, room 20, Richardson hall.

Thursday
8:30 Debate, State college versus Middlebury college, Lounge, Richardson hall.

Friday
11:10 Student assembly, auditorium, Page hall.
5:30 Biology club party, room 259, Husted hall.

Saturday
8:15 State college, St. Stephen's basketball game, gymnasium, Page hall.

Tuesday
4:15 Y.W.C.A. discussion meeting, Lounge, Richardson hall.
8:30 Advanced dramatics class plays, auditorium, Page hall.

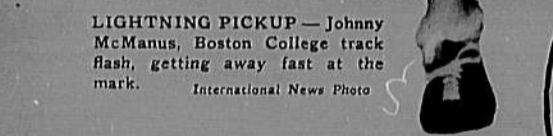
Queen Gertrude I Reigns Over Class of '35

Collegiate Digest

SECTION
"National Collegiate News in Picture and Paragraph"



ROUND THE WORLD DEBATERS—Lyle Spencer and Robert Burns, of University of Washington, trace their international goodwill debating tour.



LIGHTNING PICKUP—Johnny McManus, Boston College track flash, getting away fast at the mark.

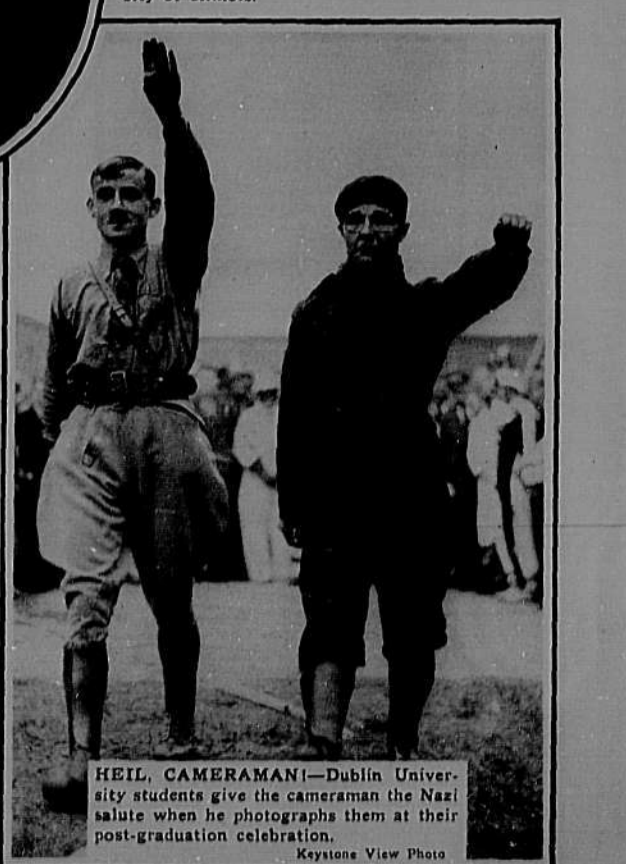


Marjorie Kalaidjian, '36: I think the students like it; but I don't think they find enough material of interest to themselves. It does, however, create an interest in the affairs of other colleges. Therefore, we should continue it.

Left INFORMAL QUEEN—Hazel Hoyle led the seniors' informal dance at the University of Illinois.



LIVING VALENTINES—Isabel Carroll and Cordelia Hoover form a life-size Valentine for Christian College's celebration of Cupid's day.



HEIL, CAMERAMAN!—Dublin University students give the cameraman the Nazi salute when he photographs them at their post-graduation celebration.

State

The Under

MARION C. HO

WILLIAM C. N

JEAN CRAIGH

KATHRYN HA

DAN VAN LE

RUTH WILLIA

MILDRED FAC

SENIOR ASSE

Thelma Smith,

and Glenn Ung

beck, seniors; I

orthy Mestere,

juniors; Rosell

garet Howes, L

dash Classes, I

Ruth Edmunds,

Eudora Farrell,

Elizabeth Griffin

baugh, Virginia

Lewis, Martha-

lotte Rockow,

Elizabeth Whit

Julia Riel, '35,

worth, '35, A

and Elizabeth I

Edith Garrison,

sophomores.

Published

Editorial B

Subscription

Delivered a

second clas

The New

expressed in

printed uncl

in-Chief of t

desired. TI

all commu

PRINTED BY

Vol. XVIII

Today,

proposed

regard to

vision of t

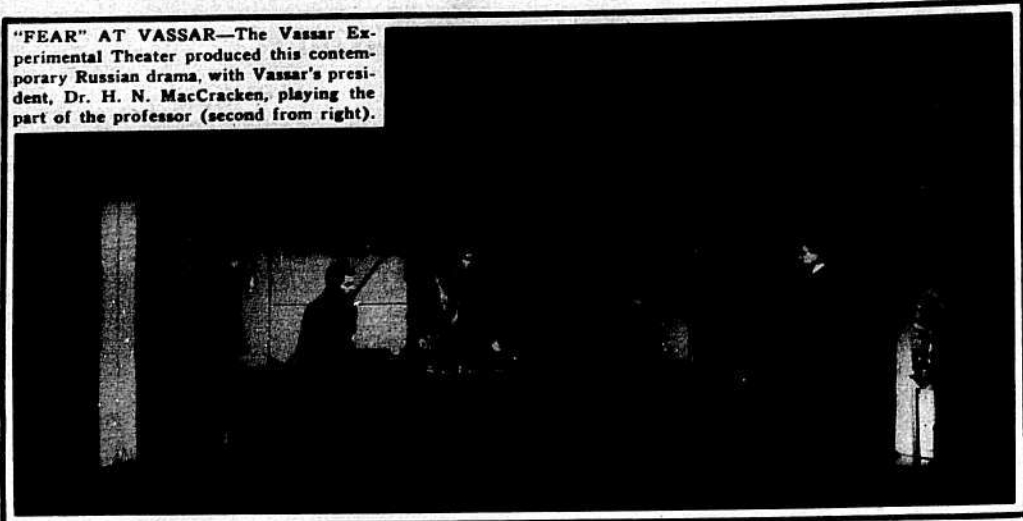
entirely st

A surv

of the jun

ever, a m

before the



"FEAR" AT VASSAR—The Vassar Experimental Theater produced this contemporary Russian drama, with Vassar's president, Dr. H. N. MacCracken, playing the part of the professor (second from right).



SOCIETY LEADER at Carroll—Janet Dancey, queen of the prom.

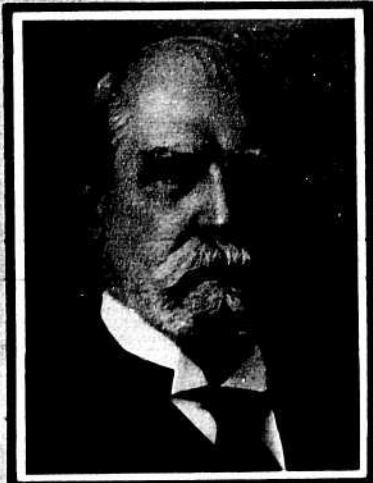


DEPICTING OLD STYLES, Frances Morgan poses with her father, A. E. Morgan, president of Antioch College and chairman of the Tennessee Valley Authority.



NEVER TOO OLD TO LEARN—these two grandmothers have enrolled in pre-legal courses at Long Island University. Tri-Baro Photo

OUTSTANDING COLLEGE GRADUATES



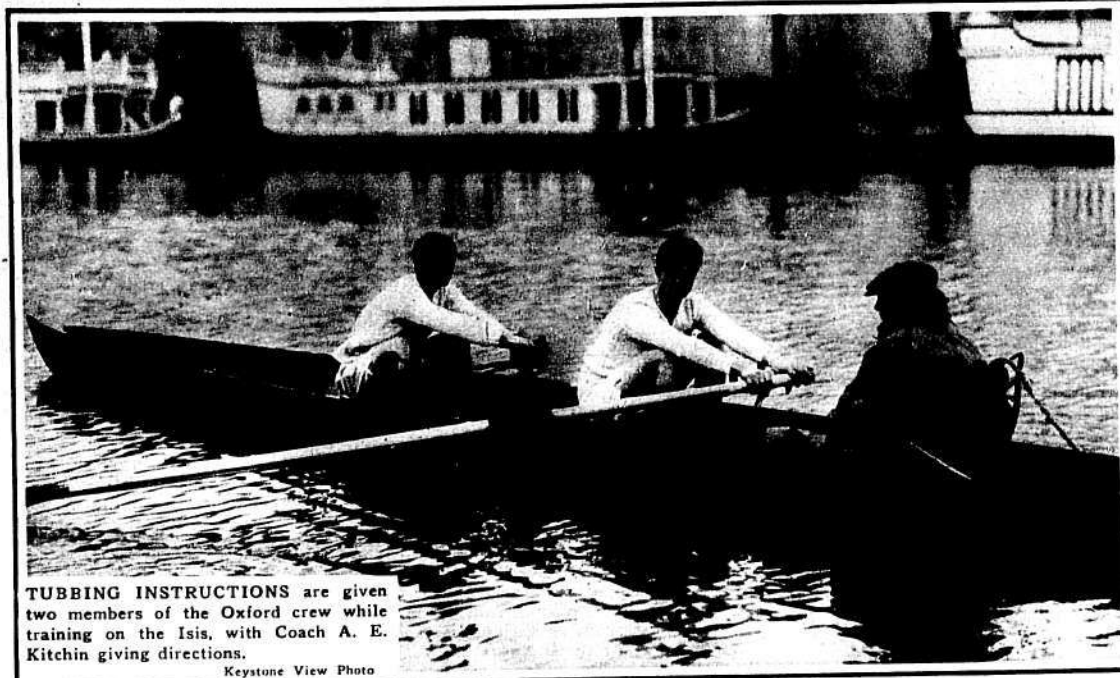
Charles E. Hughes
Brown University '81
Voted the nation's most outstanding lawyer before his appointment as Chief Justice of the U. S. Supreme Court, Mr. Hughes, former New York governor and Republican presidential nominee, is the only man ever to be re-appointed later. A former Secretary of State and World Court judge, he is an outstanding statesman and jurist.



John Gabbert Bowman
University of Iowa '99
As Chancellor of the University of Pittsburgh, Dr. Bowman is best known as the man who made that institution's Cathedral of Learning, a 40-story building, a reality. Former president of his alma mater, he holds honorary degrees from Rutgers and Oglethorpe universities and Coe College.



George A. Welsh
Temple University '05
A graduate of Temple's School of Law, Mr. Welsh is now judge of the United States District Court of Philadelphia. A former member of Congress from Pennsylvania, his selection was inspired by his conspicuous record in public service.



TUBBING INSTRUCTIONS are given two members of the Oxford crew while training on the Isis, with Coach A. E. Kitchin giving directions. Keystone View Photo



COLLEGIATE MURALIST—Susanne Knorr, Manchester, Ind., College student has just completed this mural decoration of the student art room.



Varsity CAPTAIN Oscar Hammer, of the Brown University hard-wood squad.



TO WAVE OVER SOUTH POLE—Southern Methodist University coeds displaying the flag which will be placed at the pole by C. G. Morgan of the Byrd Expedition. U. T. P. S. Photo



CO-EDS TALK WITH ECONOMIST—Roger W. Babson recently visited the Florida State College for Women. U. T. P. S. Photo



EXPONENT of American dance technique, Miss Pauline Chellis is a member of the Boston University faculty.

HEADLINERS



White Blazer Girl—Martha Myton, Hood senior, outstanding scholar and athlete.



Three sports, four honor societies at Drexel look to "Gabby" Fleming for leadership.



Goucher President David A. Robertson has been chosen a Phi Beta Kappa trustee.



University of New Mexico's weekly paper head, Dan Minnick, editor of the Lobo.



Federation of W. Va. College Students president, Eugene Robinson of Fairmont State.

State

The Under

MARION C. HOW

WILLIAM C. N. Kappa

JEAN CRAIGMIE

KATHRYN HAY Gamma

DAN VAN LEV

RUTH WILLIAM

MILDRED FACE Phi

SENIOR ASSOC. Thelma Smith, Juniors, Desk E and Glenn Unglbeck, seniors, Dorothy Meserve, Juniors; Rosella Garet Bowes, Loda Classen, D Ruth Edmunds, Estelara Parrill, Elizabeth Griffinbaugh, Virginia Lewis, Martha J. Lotte, Rockow, Elizabeth Whitte, Julia Riel, '35, worth, '35, Al and Elizabeth P. Edith Garrison, sophomores.

Published Editorial Board Subscription Delivered at second class

The New expressed in printed unless in-Chief of desired. T all commun

PRINTED BY Vol. XVIII

Today, proposed regard to vision of t entirely st A sury of the jun ever, a m before the zed. A r president's vestigated secured. and the r time. For se the need This yea ring to taken up class the ever, doe Myskani the origi When tradition posed ch the gold in previ shank w The ing ring old req them so If this quire subject kanias, posed c



WE'RE TELLING YOU—William Tell couldn't compete with this formidable line-up of co-ed archers at the University of Southern California.



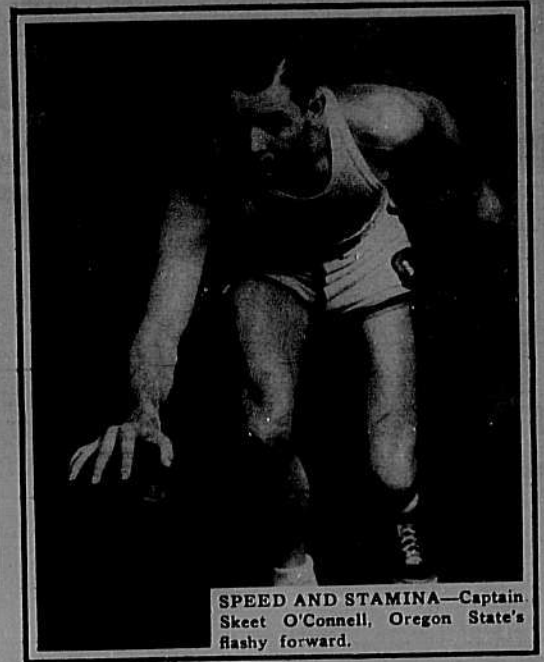
DIRECT DARTMOUTH CARNIVAL—these Dartmouth College students laid the plans for the famous carnival which is considered the highlight in the east's mid-winter collegiate social season.



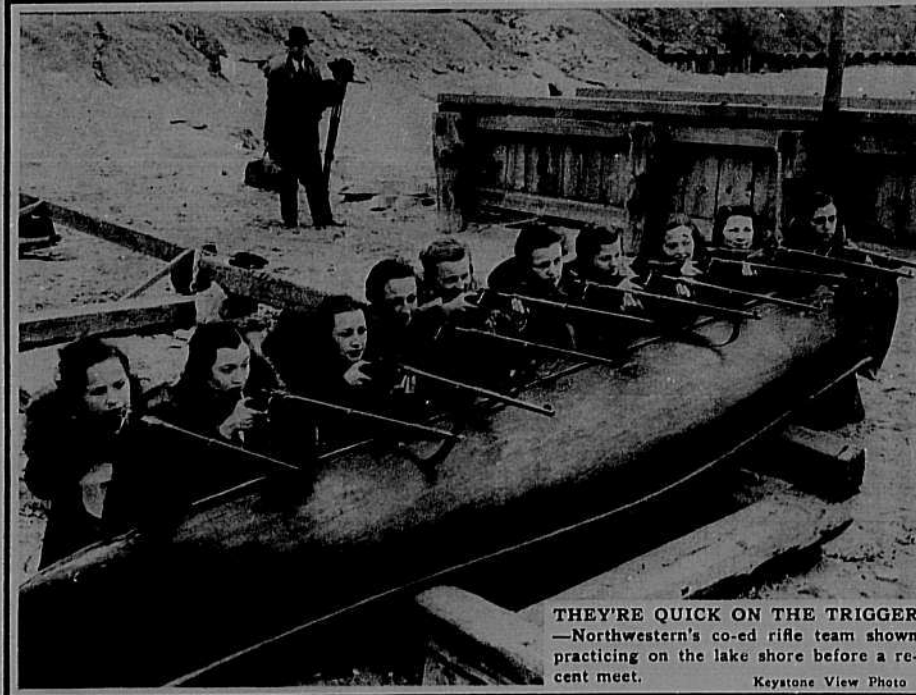
SHE DIRECTS a large part of all student activities at Butler University—Dorothy Dauner.



"IT'S OLSEN" . . . "AND JOHNSON"—but this time in the role of beauty judges. They selected Anne Scott (second row center) as Ohio State's Makio yearbook queen.



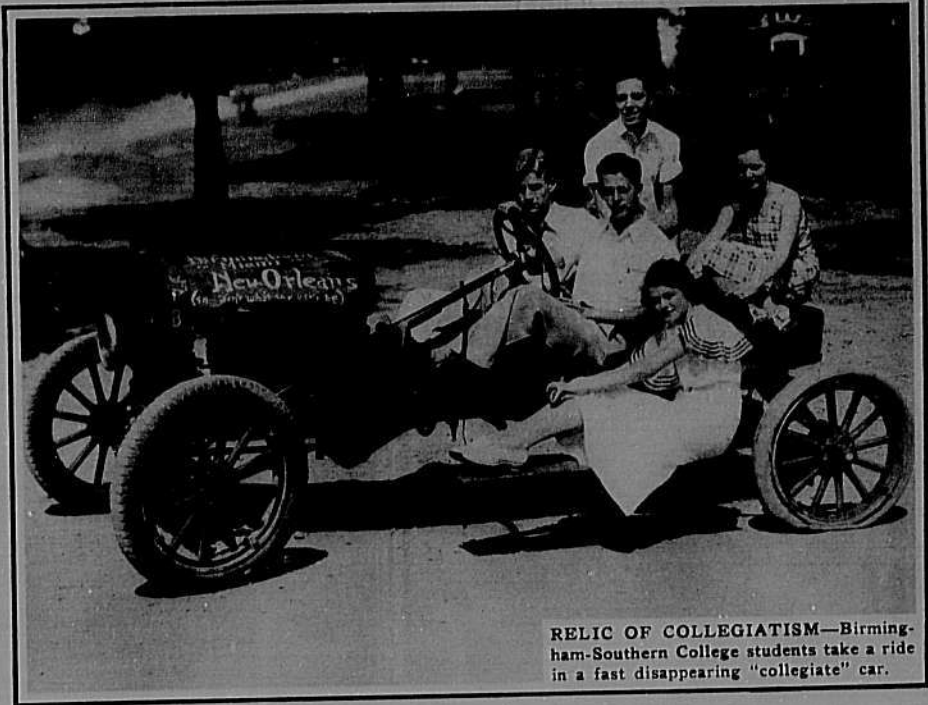
SPEED AND STAMINA—Captain Skeet O'Connell, Oregon State's flashy forward.



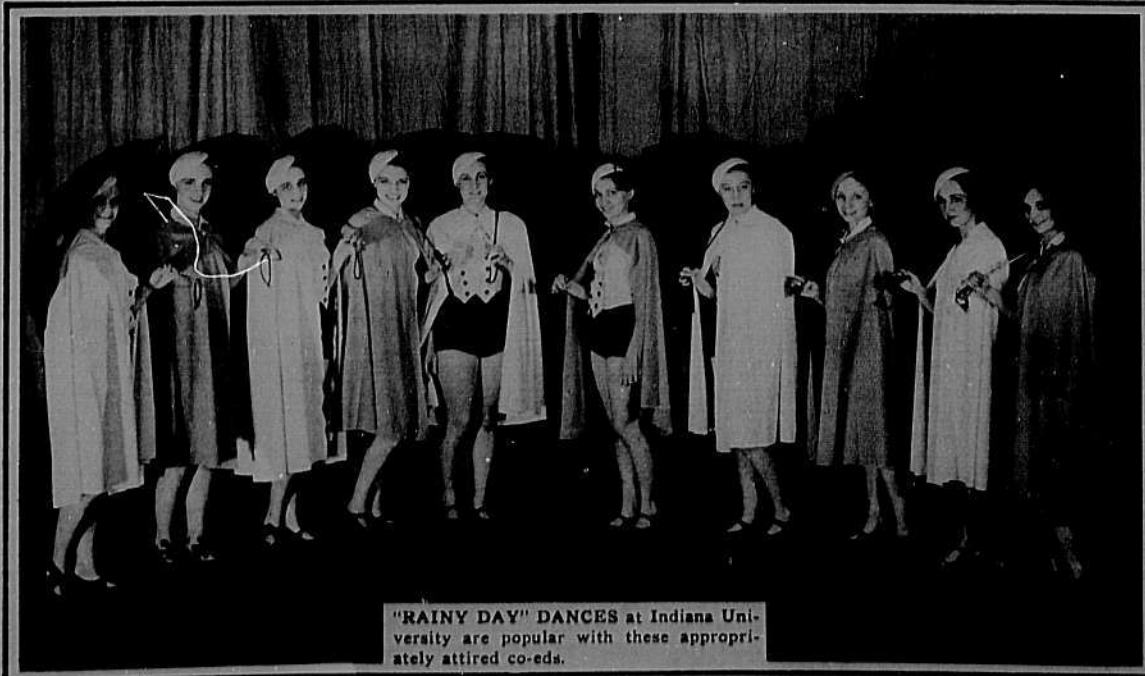
THEY'RE QUICK ON THE TRIGGER—Northwestern's co-ed rifle team shown practicing on the lake shore before a recent meet. Keystone View Photo



DECK TENNIS ON LAND—University of Maryland co-eds are rapidly adopting this new land sport as part of their intramural program. International News Photo



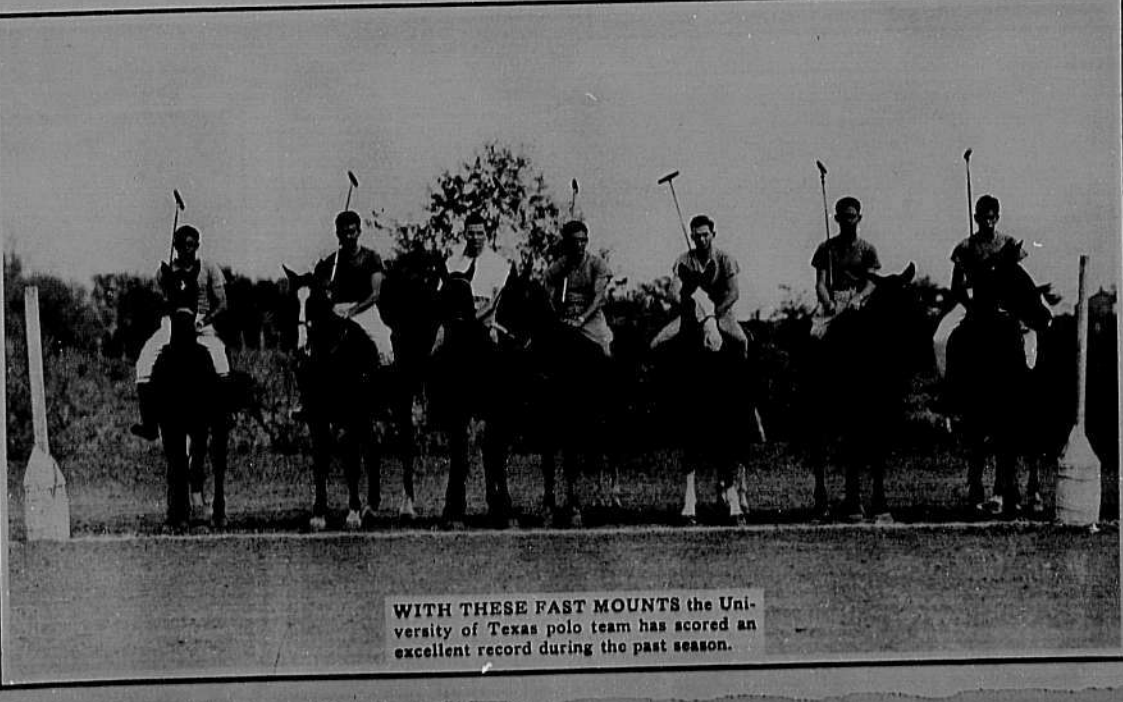
RELIC OF COLLEGIATISM—Birmingham-Southern College students take a ride in a fast disappearing "collegiate" car.



"RAINY DAY" DANCES at Indiana University are popular with these appropriately attired co-eds.



PREPARING for the Drake relays, Pitch Johnson, Drake University coach, puts his men through the paces.



WITH THESE FAST MOUNTS the University of Texas polo team has scored an excellent record during the past season.

Stat

THE U...
MARION C...
WILLIAM C...
JEAN CRAI...
KATHRYN...
DAN VAN...
RUTH WH...
MILDRED F...

Senior J...
Thelma Sm...
Juniors, Dis...
and Glenn...
beck, seniors...
Orlly Messer...
Juniors: Ro...
garet Bowes...
dah Classen...
Ruth Edm...
Eudora Tarr...
Elizabeth G...
baugh, Virg...
Lewis, Mar...
lote Rocky...
Elizabeth W...
Julia Riel, ...
worth, '35...
and Elizabeth...
Edith Garris...
sophomores.

Publishe...
Editorial...
Subscription...
Delivered...
second cla...

The Ne...
expressed...
printed un...
in-Chief of...
desired. T...
all commu...

PRINTED I...

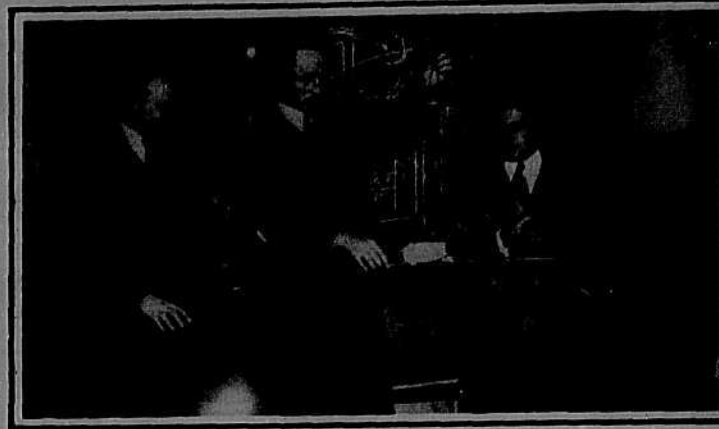
Vol. XVII

Today...
proposed...
regard to...
vision of...
entirely...
A sur...
of the ju...
ever, a r...
before th...
zed. A...
president...
vestigate...
secured...
and the...
time.

For s...
the need...
This yea...
ring to...
taken u...
class th...
ever, do...
Myskan...
the orig...
The...
tradition...
posed...
the gol...
in prev...
shank...
The...
ing rin...
old rec...
them...
If this...
quiere...
subject...
kanas...
posed.



HE RAN THE PICKET LINES in Yankton College's "date" war, so the strikers administered this punishment.



TO STUDY STRATOSPHERIC WEATHER—balloons will be sent up by these Massachusetts Institute of Technology scientists.



STAGECRAFT DEMONSTRATIONS are given spectators at Ohio University theater productions.



CHAMPIONSHIP CONTENDERS — Case Tech's Ohio conference champions who will again enter the tennis tourneys this season.



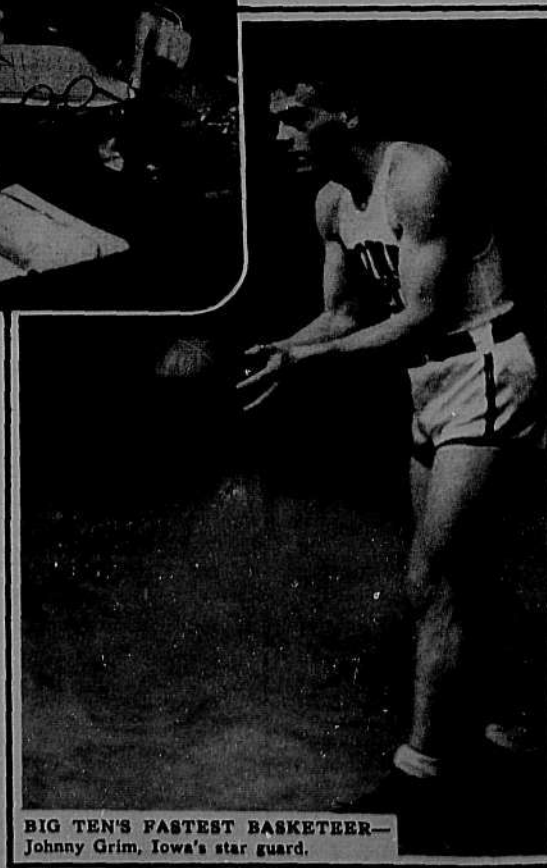
HEADS RHODES GROUP—Dr. Frank Aydelotte, president of Swarthmore College, is American secretary of the Rhodes Scholarship Trust.



TENNESSEE'S MOST VALUABLE—Beattie Peathers, All-American half-back of the University of Tennessee, is awarded the trophy as the most valuable player in the southeastern conference.



THREE GENERATIONS—Betty Coed, her mother and grandmother in the costume parade at Drexel Institute's open house.



BIG TEN'S FASTEST BASKETEER—Johnny Grim, Iowa's star guard.

Queen Gertrude I Reigns Over Class of '35
At Annual Junior Prom at Aurania Club

THE SIDE LINE



LUNCHEON DANCES are popular in Oglethorpe University's student dining hall.



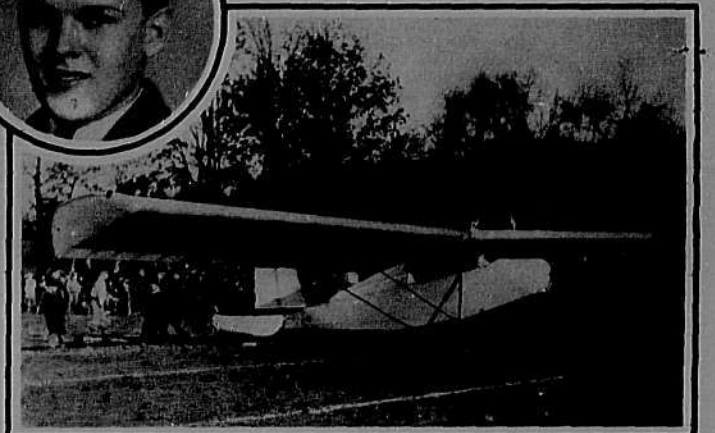
I'M WAITING JULIET—Oklahoma City University students in a lax moment between classes.



THIS IS THE LAST—Taps will soon be sounded for R. O. T. C. unit at DePauw University, for it has been abolished by the institution's administrators.



"GOLDEN FLASH"—Kent State College Glider Club's student-constructed glider. In the inset is Roger Wolcott, president of the club.



CORRECT CAMPUS WEAR—This week we present three patterns, two ensembles and an "all-day" school dress, that are outstanding in their simplicity and attractiveness. At the left is an ensemble that can be procured in 12 to 20-year-old sizes, with 34 to 38 bust. The smart dress illustrated in the center panel comes in sizes 14 to 20 years, with 34 to 44 bust, while the combination shown on the right may be had in small, medium and large sizes for the cape, and 12 to 20 years, with 34 to 40 bust, for the dress.

ORDER PATTERNS from Collegiate Diorst SECTION 114 S. Carroll St., Madison, Wis. Enclose stamps, coins, money order or check for 20 cents for each pattern and cost of mailing. Please indicate pattern number and size on order.



Travelling?

Collegiate Digest Travel Bureau is organized to help you choose an enjoyable vacation, at no cost to you. Below you will find a coupon which we ask you to check, clip, and send us. We will forward the requested literature to you as soon as possible.

Travel Bureau, Collegiate Digest
Box 472, Madison, Wisconsin

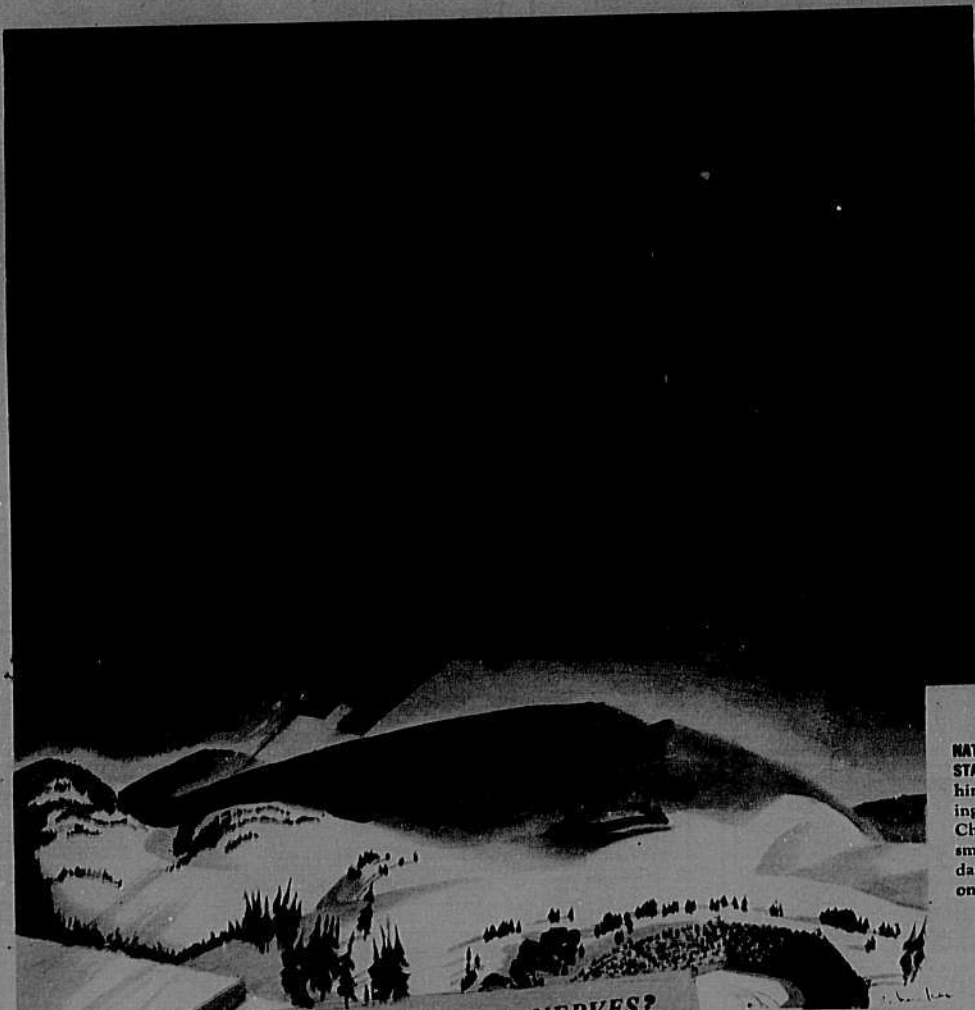
Gentlemen: Please send me the literature on the following:

- Yellowstone Park Alaska
- Rocky Mt. National Pk. Dude Ranches
- Europe Zion National Pk.
- Glacier National Park Hawaii
- Banff-Lake Louise Other

I expect to travel by railroad automobile plane steamship

(NAME) _____
(COLLEGE ADDRESS) _____
(HOME ADDRESS) _____

It takes Healthy Nerves

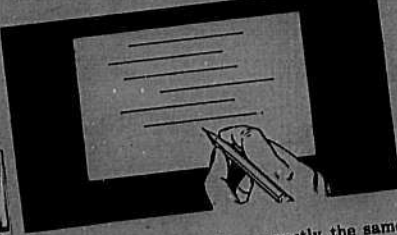


TO BE A
CHAMPION
SKI JUMPER

ANTON LEKANG
NATIONAL CLASS A SKI JUMP CHAMPION OF THE UNITED STATES. With over forty titles and trophies behind him, Anton Lekang turned in a brilliant ski-jumping record at Lake Tahoe to win the 1932 National Championship of the U.S.A. Lekang has been smoking Camels for many years. He says: "A day's last Camel tastes just as good as the first one. They never interfere with healthy nerves."

Copyright, 1931, R. J. Reynolds Tobacco Company

HOW ARE YOUR NERVES?
TRY THIS TEST



Here is a series of six lines, exactly the same length. Have someone count quickly, one, two, three, four, five, six, while you divide each line exactly in half. Now measure each line with a ruler. What's your score? The average person divides the lines within one-eighth of an inch.

Florence Burnham (Camel smoker), famous woman motor-race racer, divides them within one-sixteenth of an inch!

IT IS MORE FUN TO KNOW
It is a fact that Camels are made from finer, MORE EXPENSIVE tobaccos than any other popular brand.



Steady Smokers turn to Camels

ANTON LEKANG, winner of over 40 titles and trophies, smokes Camels steadily—without a sign of jangled nerves. He says: "The most important elements in ski jumping are correct timing and healthy nerves. In fact, they add up to the same thing because you cannot have correct timing *without* healthy nerves. I have been jumping at championship ski-runs for years. And I have smoked Camels steadily for even longer. They are the

only cigarette that I don't get tired of. A day's last Camel tastes just as good as the first one. And Camels never interfere with healthy nerves."

Countless thousands are changing to Camels. And they are urging others to join them! Camels are milder. They have a rich, satisfying flavor. And they leave your nerves smooth and unruffled.

Camel's Costlier Tobaccos

NEVER GET ON YOUR NERVES.. NEVER TIRE YOUR TASTE

TUNE IN! CAMEL CARAVAN featuring Glen Gray's CASA LOMA Orchestra and other Headliners Every Tuesday and Thursday at 10 P. M., E.S.T.—9 P. M., C.S.T.—8 P. M., M.S.T.—7 P. M., P.S.T., over WABC-Columbia Network

Queen Gertrude I Reigns Over Class of '35
Room at Aurania Club

THE SIDE LINE

Collegiate Digest

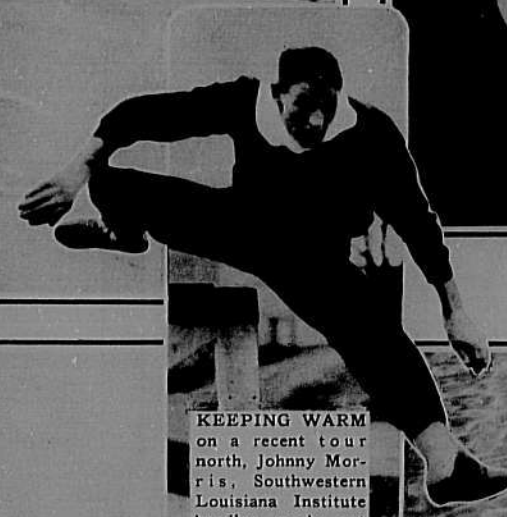
SECTION
"National Collegiate News in Picture and Paragraph"



TAPS ON THE ROOF OF NEW ENGLAND—A Harvard University skier blows the bugle for supper during an outing on Mt. Washington. Acme Photo



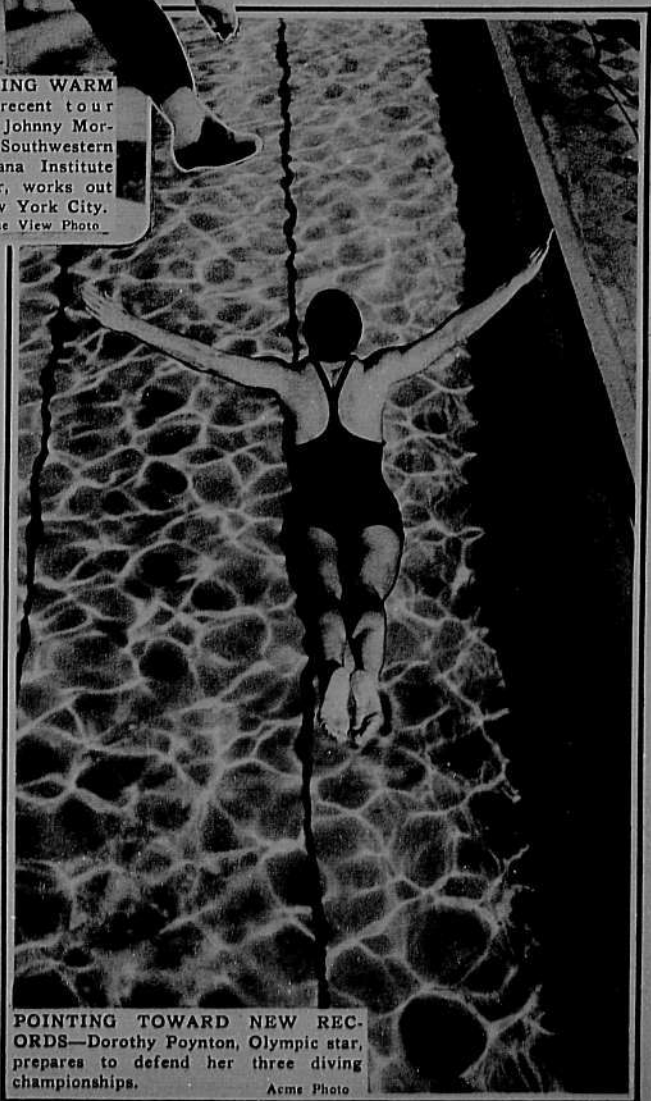
A SMILE WORTH FIGHTING FOR—Virginia Kilbourne, sponsor of the Louisiana State University boxing team. Keystone View Photo



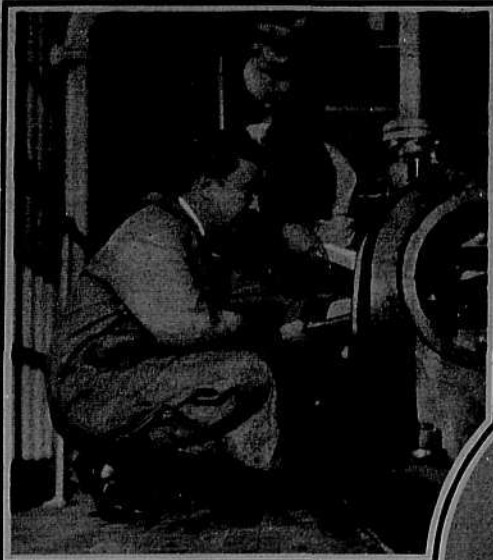
KEEPING WARM on a recent tour north, Johnny Morris, Southwestern Louisiana Institute hurdler, works out in New York City. Keystone View Photo



FIRST CREW PRACTICE at University of California under the direction of Coach Ky Ebright. Acme Photo



POINTING TOWARD NEW RECORDS—Dorothy Poynton, Olympic star, prepares to defend her three diving championships. Acme Photo



TACKLING A TOUGH ONE—Brown University students at work in the engineering laboratory.



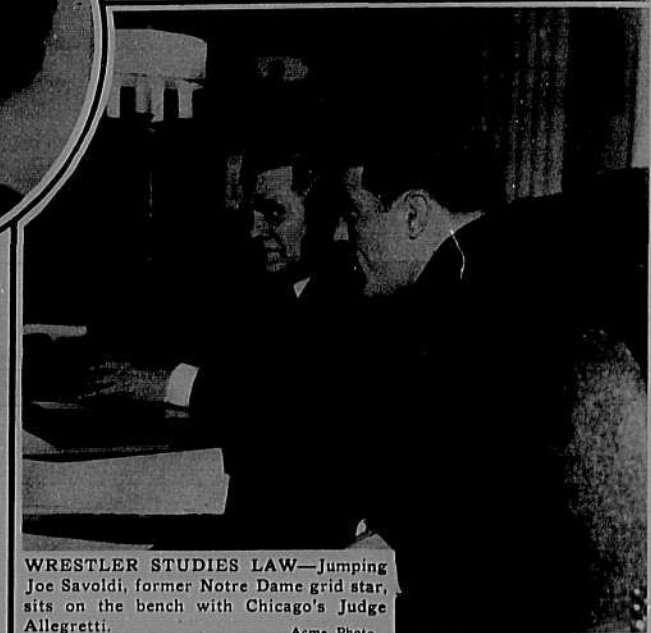
CO-ED RIFLE TEAM CAPTAIN—Gertrude Schneeweiss, of Drexel Institute, Philadelphia. Acme Photo



Left JUNIOR CLASS PRESIDENT—Jeanette Wagon, Bessie Tift College, Forsyth, Ga.



TABLE TENPINS—University of Michigan students enjoying a friendly winter evening game.



WRESTLER STUDIES LAW—Jumping Joe Savoldi, former Notre Dame grid star, sits on the bench with Chicago's Judge Allegetti. Acme Photo

OUTSTANDING COLLEGE GRADUATES



Most Rev. P. A. McGovern
Creighton University '91
A member of Creighton's first graduating class, the Rev. Mr. McGovern has risen to the high post of Bishop of Cheyenne, Wyo., a position which he has held for 20 years. Known throughout the nation as a champion of education, he has done outstanding missionary work in a diocese comprising 101,340 square miles. He was elevated to the hierarchy in 1912 by Pope Pius X.



James E. Scrugham
University of Kentucky '00
Kentucky's outstanding alumnus has occupied positions of high trust in the fields of education and government. He served as engineering dean of the University of Nevada, public service commissioner of New York State, Governor of Nevada, and editor of Nevada State Journal. He is at the present time Congressman from Nevada and a member of the House banking and currency committee.



Gabe E. Parker
University of Tulsa '99
Now a trustee of his alma mater, Mr. Parker has done outstanding work in education among the Indians of the southwest. From superintendent of the Armstrong Academy for Choctaw Indian Boys to superintendent of five Indian tribes under President Wilson, he has been a constant friend of Indian education. He was registrar of the U. S. treasury from 1913 to 1915.

HEADLINERS



Virgil Wettich, 1934 May Queen at Westminster College.



Dr. Walter A. Jessup, former Iowa President, chairman of Carnegie Foundation for Advancement of Teaching.



Nan Grishaber, first co-ed business manager of Lawrence College weekly.



Spencer Liverant, youngest professor of law at Dickinson College.



Dr. Emmett B. Carmichael, University of Alabama, conference chairman of American Association for Advancement of Science.



CHAMPIONSHIP FORM—Miss Ellen Stevens is the outstanding co-ed fencer at the University of Southern California.



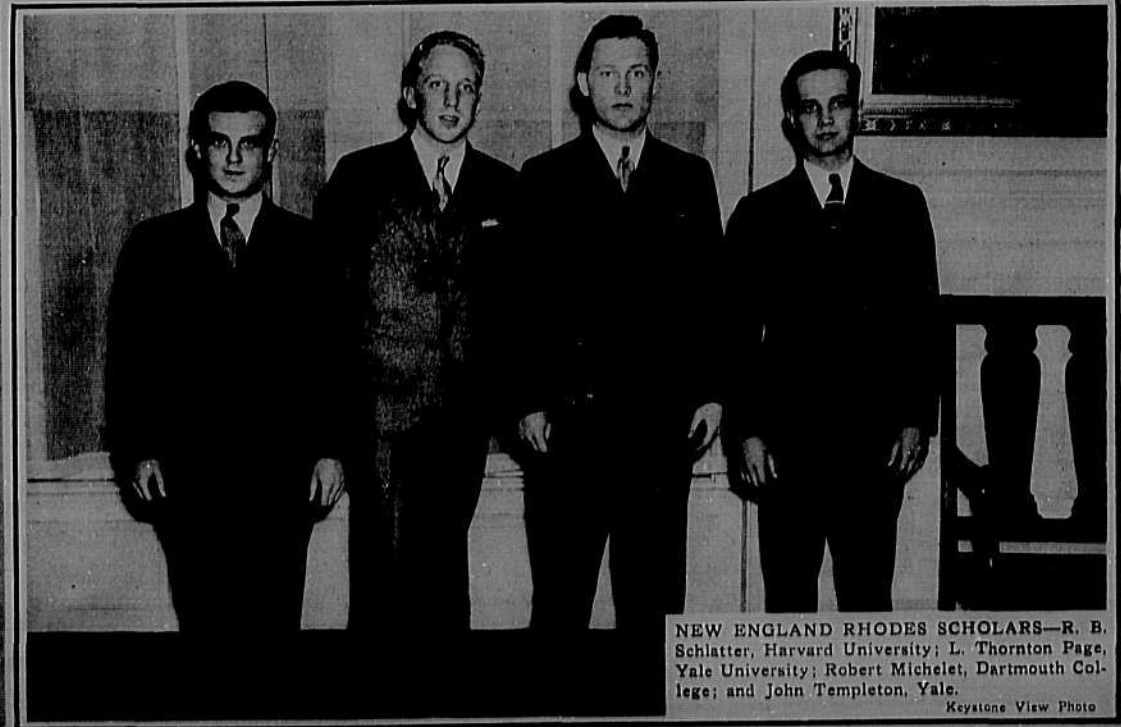
HOLDS FIVE TITLES—Robert S. Oppenheim, of Union College's tank squad.



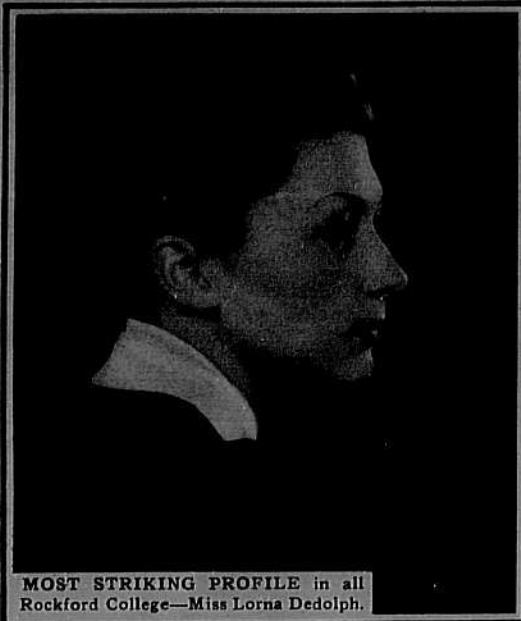
IOWA'S TITLE HOPES rest on the fast footwork of Johnny Barko and Ivan Blackmer, and they are making sure that their shoes fit perfectly.



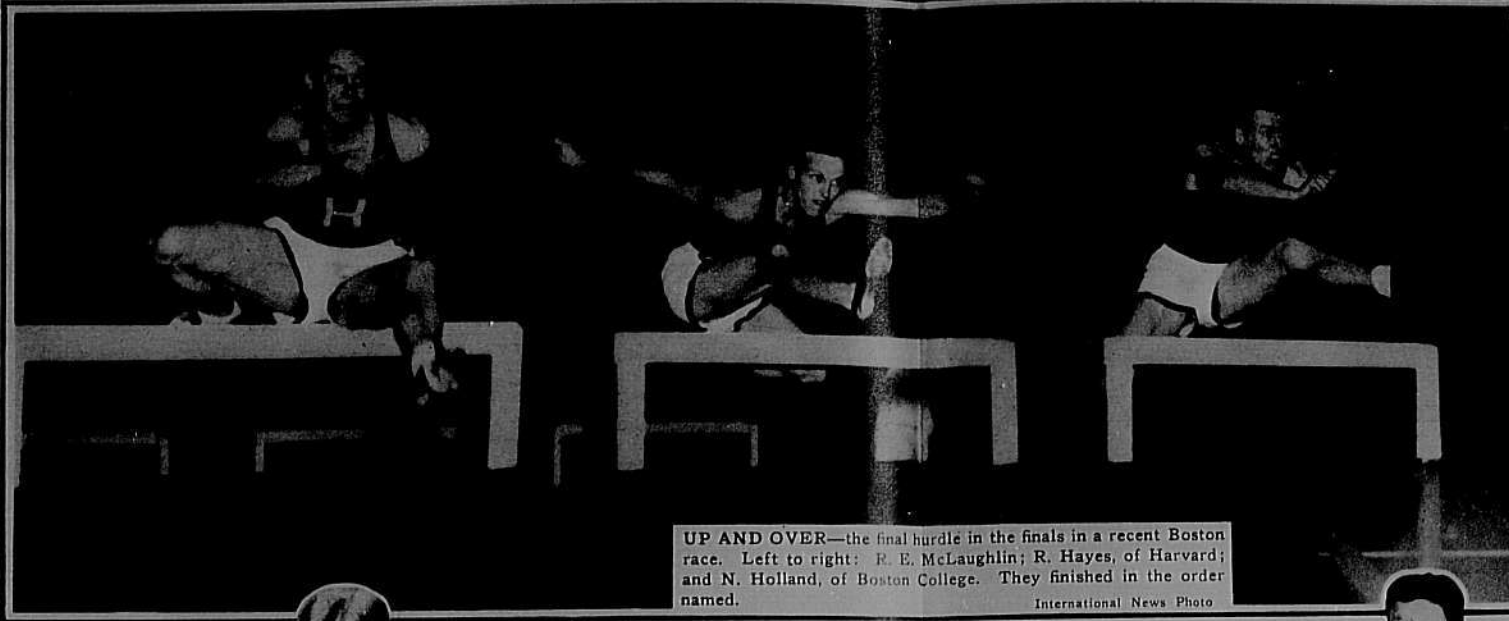
NEW YALE COACH—Ducky Pond (right) is greeted by Clare Curtin, captain of next year's team, and "Handsome Dan," Eli's doggy mascot. Keystone View Photo



NEW ENGLAND RHODES SCHOLARS—R. B. Schlatter, Harvard University; L. Thornton Page, Yale University; Robert Michelet, Dartmouth College; and John Templeton, Yale. Keystone View Photo



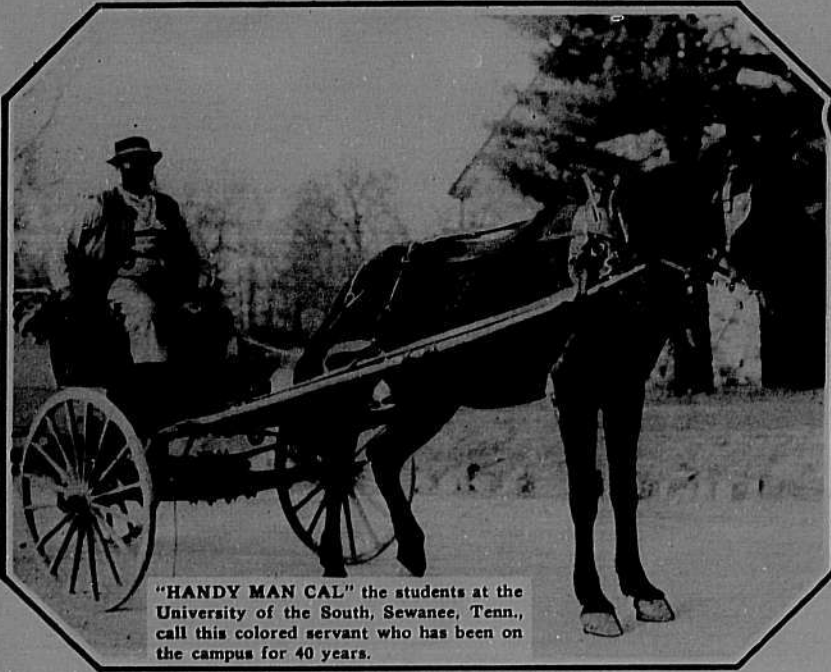
MOST STRIKING PROFILE in all Rockford College—Miss Lorna Dedolph.



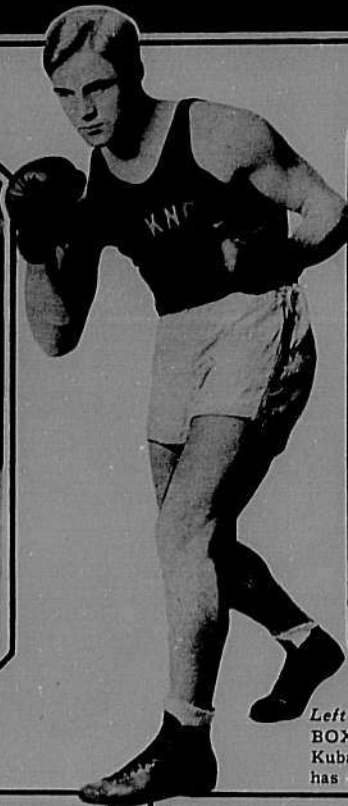
UP AND OVER—the final hurdle in the finals in a recent Boston race. Left to right: R. E. McLaughlin; R. Hayes, of Harvard; and N. Holland, of Boston College. They finished in the order named. International News Photo



PLAYED IN FIRST INTERCOLLEGIATE FOOTBALL GAME—Homer D. Boughner, 85-year-old Princeton alumnus, who played in the Princeton-Rutgers game, the first played in the U. S., in 1869. Keystone View Photo



"HANDY MAN CAL" the students at the University of the South, Sewanee, Tenn., call this colored servant who has been on the campus for 40 years.



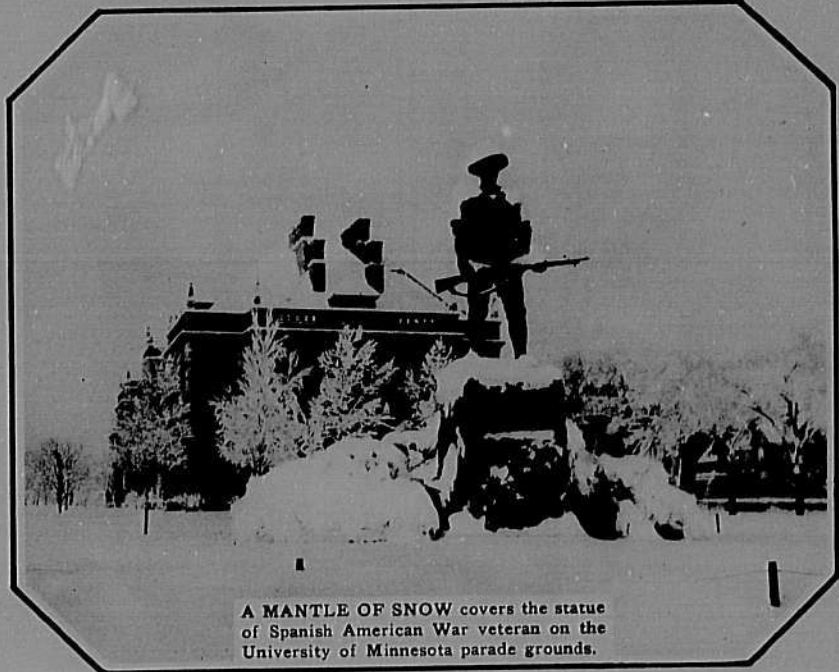
Left
BOXING CAPTAIN — Johnny Kubacki, of Bucknell University, has not been beaten this season.



WINTER DANCE LEADERS at the University of Tennessee—David Harris, and his partner, Miss Lillian Gautier. Knaff & Brakebill Photos



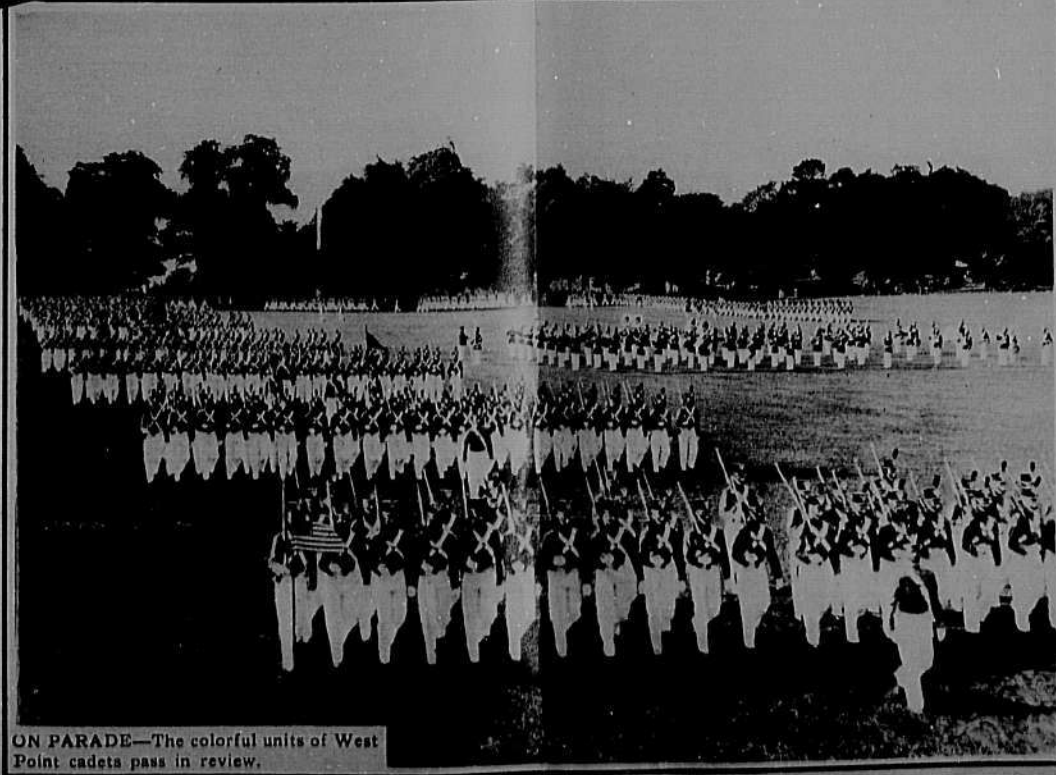
Right
ONE-MAN TRACK TEAM—Red Parrish, of the University of Kentucky, participates in five events.



A MANTLE OF SNOW covers the statue of Spanish American War veteran on the University of Minnesota parade grounds.



FUTURE RHARMACISTS—students working in the laboratories of the University of Maryland pharmacy school. Matlese Photo



ON PARADE—The colorful units of West Point cadets pass in review.



PECAN RACES are the outstanding features of the Delta Kappa fraternity initiations at Vanderbilt College, Nashville, Tenn. Wide World Photo

3
1
s
-
s,
h
at
ll
an
ve
ts
00
ill
dr

it-
ss,
u-
on
its
It-
er-

inc
sis
use

nes
tip.

11

112
112

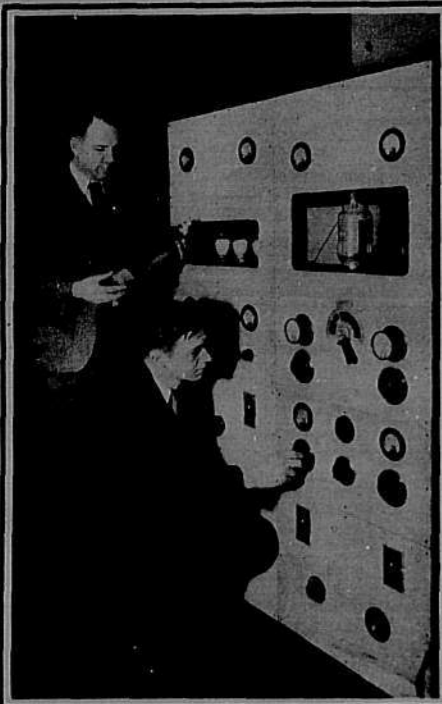
Y.



FRESHMAN CLASS OFFICERS at Middlebury, Vt. College, (left to right) Ruth Wickware, William Waite, Mildred Moore, Randal Hoffman, Phillip Brown, Marion Wishart.



EDITS LITERARY MAGAZINE—Florence Pitts, editor of Converse College "Concept." Manning Photo



NEW TELEVISION APPARATUS has just been installed at the University of Iowa station, W9XK. Prof. E. B. Kurtz and J. L. Potter are inspecting the new apparatus.



PLAYS THIRD SEASON AT GUARD—Francis Heenan, Rutgers University basketball player.



THUMBING THEIR WAY HOME—University of Georgia students catching rides out to their fraternity and sorority houses.



WHO DOES THIS REMIND YOU OF?—Evelyn Wilson, Southwestern Louisiana Institute co-ed, in a real old-time costume.



LEARN FORESTRY MANAGEMENT—A "classroom" scene at the New York State College of Forestry at Syracuse.

Queen Gertrude I Reigns Over Class of '35
Annual Junior Prom at Aurania Club

THE SIDE LINE



JUNIOR PROM CHAIRMAN—Vivian Boyce, popular Adelphi College, Garden City, N. Y., co-ed.



ARTHUR BRISBANE HONORED—The famous columnist was made an honorary member of Alpha Phi Gamma, journalism fraternity, at the national convention held at Santa Barbara State College. He is shown with members of the organization.



Left \$5,000 IN GOLD LEAF was used to cover the dome on Notre Dame's Administration Building.



IT'S "BLACKFACE JIMMY" NOW—The famous Schnozzle Durante turns mammy singer in a new Hollywood production.



A BAFFLED COACH—Elmo and Otto Patrick, twin basketballers, still have Marshall College Coach Farley puzzled.



THE COLLAR'S THE THING—along with the slender lines of the models shown this week for the smartly dressed co-ed who wishes to make her own dresses. At the left is a simple frock with a V-neck, sizes 12 to 20 years, with 34 to 42-bust. In the center panel are illustrated patterns for an ascot and a bib collar, coming in small, medium and large sizes. At the right is a striking frock which comes in sizes 14 to 20 years, with 34 to 42 bust.

ORDER PATTERNS from Collegiate Digest SECTION 114 S. Carroll St., Madison, Wis. Enclose stamps, coin, money order or check for 20 cents for each pattern and cost of mailing. Please indicate pattern number and size on order.



Going places?

Collegiate Digest Travel Bureau is organized to help you choose an enjoyable vacation, at no cost to you. Below you will find a coupon which we ask you to check, clip, and send us. We will forward the requested literature to you as soon as possible.

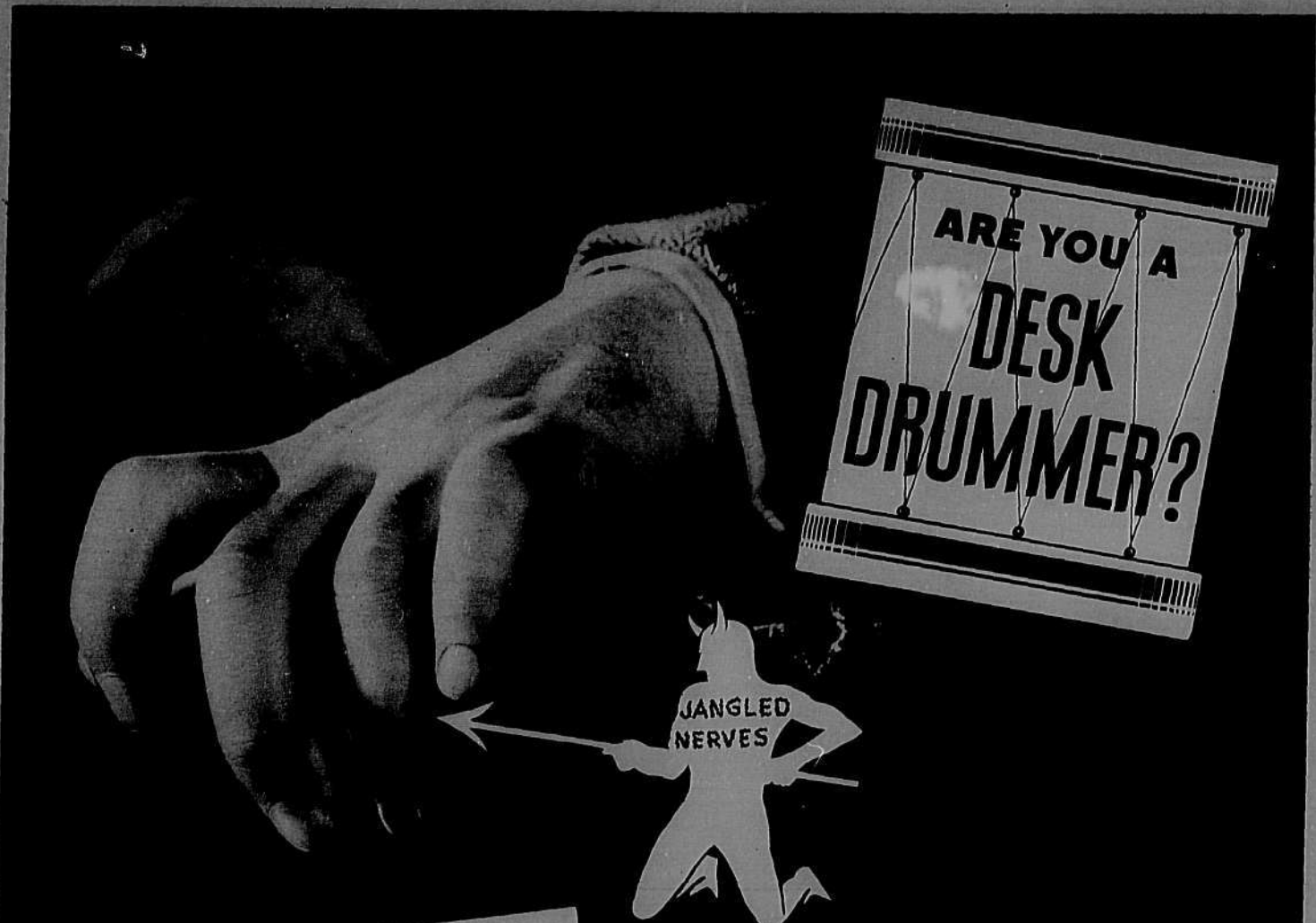
Travel Bureau, Collegiate Digest
Box 472, Madison, Wisconsin

Gentlemen: Please send me the literature on the following:

<input type="checkbox"/> Yellowstone Park	<input type="checkbox"/> Alaska
<input type="checkbox"/> Rocky Mt. National Pk.	<input type="checkbox"/> Dude Ranches
<input type="checkbox"/> Europe	<input type="checkbox"/> Zion National Pk.
<input type="checkbox"/> Glacier National Park	<input type="checkbox"/> Hawaii
<input type="checkbox"/> Banff-Lake Louise	<input type="checkbox"/> Other _____

I expect to travel by
 railroad automobile plane steamship

(NAME) _____
 (COLLEGE ADDRESS) _____
 (HOME ADDRESS) _____



How are YOUR nerves? TRY THIS TEST

With arms hanging straight at your sides—standing in erect position—rise on your toes as high as possible. See how long you can maintain this position without teetering or losing your balance. Average time is one minute.



Irving Jaffe (Camel smoker), famous Olympic skating champion, can maintain the position 10 minutes.

COSTLIER TOBACCOS

Camels are made from finer, MORE EXPENSIVE TOBACCOS than any other popular brand of cigarettes!



Jangled nerves are like a leak in your reserve of energy. And if you could count the units of energy a normally high-strung person wastes each day—the result would astonish you.

So if you find yourself drumming on your desk or table—or indulging in any other nervous habits—start protecting your nerves.

Get enough sleep—fresh air. Make Camels your smoke. You can smoke as many Camels as you want. Their costlier tobaccos never jangle your nerves.

CAMELS—SMOKE AS MANY AS YOU WANT... THEY NEVER GET ON YOUR NERVES!

TUNE IN! CAMEL CARAVAN featuring Glen Gray's CASA LOMA Orchestra and other Headliners Every Tuesday and Thursday at 10 P. M., E.S.T.—9 P. M., C.S.T.—8 P. M., M.S.T.—7 P. M., P.S.T., over WABC-Columbia Network

BAKERMEN DOWN HARTWICK QUINTET

State Displays New Offense System; Whips Oneonta Cage Outfit By 17 Point Margin

In the annual court tilt with the Hartwick quintet from Oneonta, the Bakermen emerged the victors by a wide margin, indicated by a 47-30 score.

The Purple and Gold offense, as such, was noticeable for the first time this season and the floor work of the team was up to a collegiate par.

The Purple and Gold offense, as such, was noticeable for the first time this season and the floor work of the team was up to a collegiate par.

Both coaches substituted frequently throughout the last two quarter periods with no distinct advantage to either outfit.

"Flip" Burnell and George Bancroft led the scoring attack of the State college outfit with thirty-two points.

The box score of the game follows:

Table with columns for STATE and HARTWICK, listing player names and statistics.

CLUB WILL HAVE INITIATION PARTY AT 5:30 FRIDAY

Biology club will conduct a laboratory party in the biology laboratory, room 257 of Draper hall, Friday afternoon at 5:30 o'clock.

TO CONDUCT PARTY

Menorah club will conduct a bridge party Sunday afternoon at 5:30 o'clock at the home of Mrs. Ben Hershey.

NEWS NOTES

TO CONDUCT TEA

The next student-faculty tea will be conducted Wednesday afternoon at 3:00 o'clock in the Lounge of Richardson hall.

CLUB TO MEET

French club will conduct a council meeting Wednesday afternoon at 3:15 o'clock in room 20 of Richardson hall.

IS VICE-PRESIDENT

Philip Riccardi, '34, was recently elected vice-president of Kappa Phi Kappa, national honorary educational fraternity.

IS RECENT VISITOR

Alvina Lewis, '33, recently visited the office of the State College News.

DR. E. H. MORRIS TO LEAD Y. W. C. A. GROUP TUESDAY

Dr. Elizabeth H. Morris, professor of education, will lead the discussion of the second meeting of the Young Women's Christian association.

CLUB WILL HAVE INITIATION PARTY AT 5:30 FRIDAY

Biology club will conduct a laboratory party in the biology laboratory, room 257 of Draper hall, Friday afternoon at 5:30 o'clock.

Art Studio Conducts Display of Pastels

The art exhibit now displayed outside the art studio in Draper hall is an inspirational study conducted by Miss Alice Morgan Wright.

FRANK H. EVORY & CO. General Printers

36-38 Beaver Street 91 Steps East of Pearl Street

N. P. FREDETTE EYE GLASSES

OCULISTS' PRESCRIPTIONS FILLED Hewitt Building, Room 10, 61 Columbia Street, Albany, N. Y.

Queen Gertrude I Reigns Over Class of '35 At Annual Junior Prom at Aurania Club



Courtesy, Times Union

State college demonstrated its unique originality Friday night at the Aurania club when members of the junior class and their guests gathered to witness the coronation of Gertrude Morgan, '35.

Fraternity To Initiate Nine Neophytes Sunday

Nine neophytes will be formally initiated into Gamma chapter of Kappa Delta Rho fraternity Sunday afternoon.

Dr. Smith Will Speak In Student Assembly

Hertha E. Brimmer, executive secretary of the Alumni association.

WELCOMES MEMBER

Epsilon Beta Phi sorority welcomes Mary Riley, '35, into full membership.

C. F. Williams & Son, Inc. Printers

36 Beaver Street Albany, N. Y.

THE SIDE LINE

Six correct predictions—one incorrect—not bad!

The Bakermen looked like a college ball team last Saturday against the Southern tier aggregation from Hartwick.

I must say that the morale of the team was slightly improved, showing that the boys can hold out if they are taking over the opposition.

George Bancroft held his man, or men, we should say, to goose eggs, while he managed to run up a neat sum of 13 counters.

Charlie Robson, not a basketball star, but a pill player of a certain degree, is reputed to have taken over the entire almost entire—squad from Hartwick on his private court at the Y.M.C.A.

This week-end the Purple and Gold go into action against a mediocre team from Brooklyn and the Hamilton college quintet.

I predict that the Bakermen will be taken into camp on both occasions. Boys, please spare the brick bats. I predict you will win the St. Stephen's game.

FRESHMAN 'CUBS' WILL CONTINUE IN NEWS CLASSES

During the second semester, editorial classes for the State College News freshman "cubs" will be conducted under the direction of Thelma Smith.

VISIT SORORITY

Katherine Moore and Katherine Long, of the class of '33, were guests at the Chi Sigma Theta sorority house for Junior Week-end.

WELCOMES MEMBER

Epsilon Beta Phi sorority welcomes Mary Riley, '35, into full membership.

C. F. Williams & Son, Inc. Printers

36 Beaver Street Albany, N. Y.

NANCY ANN SHOP

793 Madison Avenue Open Evenings

Boulevard Cafeteria and Grill

198-200 Central Avenue Albany, N. Y. Try Our Special Dinners \$1.00

DRAMATICS CLASS TO STAGE PLAYS

Miss Gahagan, '35, to Direct First Presentation of Semester Tuesday at 8:30

The advanced dramatics class will present a program of two one act plays Tuesday night in the auditorium of Page hall. The first play will begin at 8:30 o'clock. These will be the first productions directed by the class for the second semester and present plans indicate that there will be at least one play each week, with the annual presentation of a three act play in May. Miss Agnes E. Futterer, assistant professor of English, serves as faculty advisor to the student dramatists.

The first play, directed by Dorothea Gahagan, '35, will have the following cast: the warden, Wilfred Allard, '35; James Dyke, Samuel Spector, '35; Dyke's sister, Elaine Cronin, '35; the priest, Kenneth Christian, '35; assistants Frank Hardmeyer and Thomas Kelley, sophomores.

Agnes Beck, '34, directs the second play production. The following will appear in the cast: Mrs. Schultze, Mary Kane, '36; Mr. Schultze, Cecil Walker, '36; Jim, William Jones, '35; and Mae, Doris Howe, '35.

WELCOMES MEMBER

Phi Lambda sorority welcomes Margaret Burnette, '36, into full membership.

ARE GUESTS

Recent house guests at Phi Lambda sorority were Ruth Conger, '31, and Dorothy Hurlbut, '30.

CHEMISTRY CLUB TO HAVE DINNER TUESDAY AT 5:30

Chemistry club will conduct a dinner in the cafeteria of Husted hall, Tuesday afternoon at 5:30 o'clock, Harold Gardner, '34, president, announced today. The committee in charge of the dinner includes: Florence Standchuk, '35, chairman, and Dorothy Grainer and Sylvia Saroff, seniors.

Initiation of new members will be conducted in room 250 of Husted hall after the dinner. The initiates will be divided into groups, and each group will present an original stunt as a part of the initiation program. All students having had more advanced work than chemistry one and any others who present original and acceptable papers before the club are eligible for membership. Eleanor Coutant, '34, will be chairman of initiation, Miss Grainer, Leo Plante, and Sophia Zelnick, seniors, will assist her.

New members of the club who will be initiated at the party are: Orvis Hazard, '34; Janet Brown, Eloise Cooper, Allen Lewis, Inez Litts, Alfred Lucas, John Stewart, and Ruth Williams, juniors; Norma Blake, Philip Carlson, Martha Dashnaw, Emma Guatterly, Donald Huddleston, Benjamin Kolker, Mildred Schultes, Myra Stephens, Florence Tate, and Angelo Zannieri, sophomores; and Fred Dexter, and Norman Gunderson, freshmen. There will be a charge of fifty cents for the dinner.

COLLECTS TINFOIL

The freshman class has undertaken the task of collecting tinfoil for the benefit of children crippled as a result of infantile paralysis. They have placed boxes for the reception of the tinfoil in the rotunda of Draper hall.

DIRECTOR NAMES 'SORCERER' CAST

G. A. A. Troubadours To Present Gilbert and Sullivan Operetta March 23 and 24

The Girls' Athletic association and the Troubadours, men's musical organization, will present another of Gilbert and Sullivan's operettas, "The Sorcerer," on Friday and Saturday, March 23 and 24, in the auditorium of Page hall at 8:30 o'clock. Lucille Hirsch, '35, will direct the production.

The cast includes: Dr. Daly, Robert Robinson, '34; Constance Partlet, Frances Studebaker, '36; Aline, Alice Owen, '34; Alexis, William Jones, '35; Sir Marmaduke, Thomas Garrett, '34; Lady Sangazure, Mildred White, '34; Mrs. Partlet, Jessie Eaton, '34; notary, Donald Benedict, '34; and John Wellington Wells, Joseph Ryan, graduate student.

The committees are: business managers, Kathryn Haug, '34, and John Bills, '35; advertising, Glenn Ungerer, '36, and Sarah Logan, '35, co-chairmen, Hannah Parker, '34, Charlotte Rockow, Clarence Saki, Karl Ebers, and Ruth Edmunds, sophomores; tickets, Carlton Coulter and Marion Heinemann, juniors, co-chairmen, George Ketcham, '34, and Harriette Ten Eyck, '35; house, Paul Cheney, '36, and Dorothy Munyer, '34, co-chairmen; sets and props, Kenneth Christian and Ruth Brooks, juniors, co-chairmen, William Nelson, Alice Fitzpatrick, Helen Danahy, Dorothy Griffin, seniors, Elizabeth Gregory and Thurston Paul, juniors; costumes, Wilfred Allard, '35, and Marian Pike, '34, co-chairmen; faculty, Almira Russ, '34, chairman; music, Philip Riccardi and Julia Shields, seniors, co-chairmen.

STATE FIVE ENDS COURT CAMPAIGN SATURDAY NIGHT

State's varsity basketball team will attempt to close its court campaign with victory when it meets St. Stephen's on the Page hall gymnasium court, Saturday night, at 8:15 o'clock, according to George Ketcham, '35, varsity basketball manager.

Neither team has an impressive court record for this season, but State should emerge the victor. St. Stephen's has bowed to both Hartwick and St. Michael's. The Purple and Gold decisively vanquished the former, and lost only by five points to the latter compared to a thirty point defeat administered to St. Stephen's by St. Michael's.

Last year, the State quintet emerged the victor over St. Stephen's by a score of 38-26.

Coach Baker has made no predictions as to who would be in the starting line-up.

Phi Delta Sorority Has Annual Alumnae Event

Phi Delta sorority conducted its annual alumnae week-end Friday, Saturday, and Sunday at the sorority house, 20 South Allen street, according to Jean Graigmile, '34, president. Activities of the week-end included a luncheon Saturday noon, and a joint meeting of active members and alumnae Saturday afternoon at 2:00 o'clock.

Guests entertained at the house were: Ethel Bisland, '27; Florence Lindoll, '31; Jean Credle, Virginia Hawkins, and Marjorie Wilson, members of the class of '32, Edith Judkins, ex-'32; and India Newton, '33.

'34 TEAM LEADS IN SPORT LEAGUE

Junior Five Wins Second Place In First Round of Winter Court Schedule

The first round of the intra-mural basketball league has been completed and the tabulation shows the juniors and seniors in first and second places respectively. The New Era team, now in third place, has an opportunity to go into a tie with the juniors if they win their two remaining games which they have yet to play because of their late entry into the race.

This season has marked the most extensive schedule ever arranged for intra-mural sports at State college. Al Jadick, manager of intra-mural sports, has recently initiated a schedule for intra-class boxing tournaments. Jadick stated that he expects to stage both tennis and baseball schedules this coming spring.

The final standing of the basketball league for the first round is as follows:

Team	Won	Lost
Juniors	4	1
Seniors	3	1
New Era	2	1
Sophomores	3	2
Graduates	1	4
Freshmen	0	5

* Must play two more games to complete round one.

WELCOMES MEMBERS

Gamma Phi Sigma welcomes the following into full membership: Margaret McCann, Beatrice Burns, and Elizabeth Bennett, juniors, and Harriette Rhodes and Catherine Mullarney, graduate students.

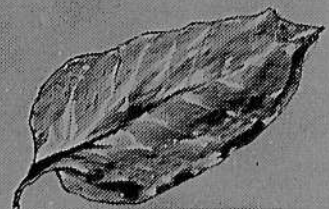
Each year Turkey and Greece ship us thousands of bales of fine tobaccos—

But why send 4,000 miles for tobacco?

...because spicy, aromatic Turkish is the best seasoning there is for a cigarette. It adds something to flavor and aroma that no other tobacco can give.

Chesterfield uses Turkish tobacco—from Samsoun, Smyrna, Cavalla and Xanthi.

Then it blends and cross-blends them with various kinds of choice home-grown tobaccos in the right balance to give you a cigarette that's milder, a cigarette that tastes better.



A leaf of Turkish tobacco—smaller than the palm of your hand—800 or more to the pound. There are many thousands of these leaves in each of these bales below, ready for shipment to America.



Chesterfield

A BALANCED BLEND OF FINEST AROMATIC TURKISH

AND DOMESTIC TOBACCOS

© 1934, LIGGETT & MYERS TOBACCO CO.