

6 K Kan River at
Nanchang Sailboat

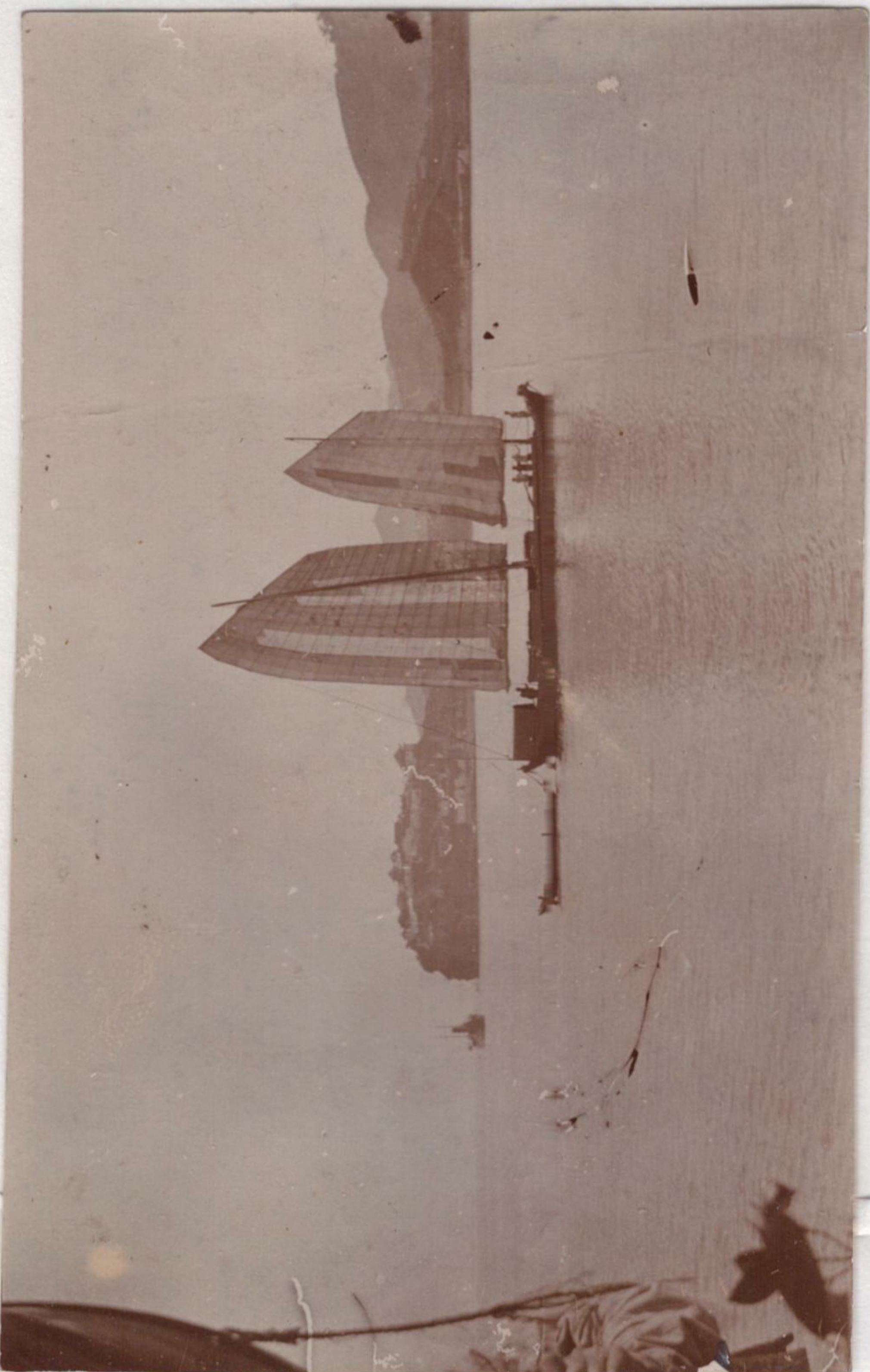


No
202

N^N Kan River 3 Boats 1934
from the Methodist
Compound in Nanchang



12 E Kan River at
Boat Nanchang



N^N 2 Boats on the Kan River
N^N Nanchang from the
Methodist Compound
2 Pictures



NN Boats on the Kan on
which we travelled.
1918



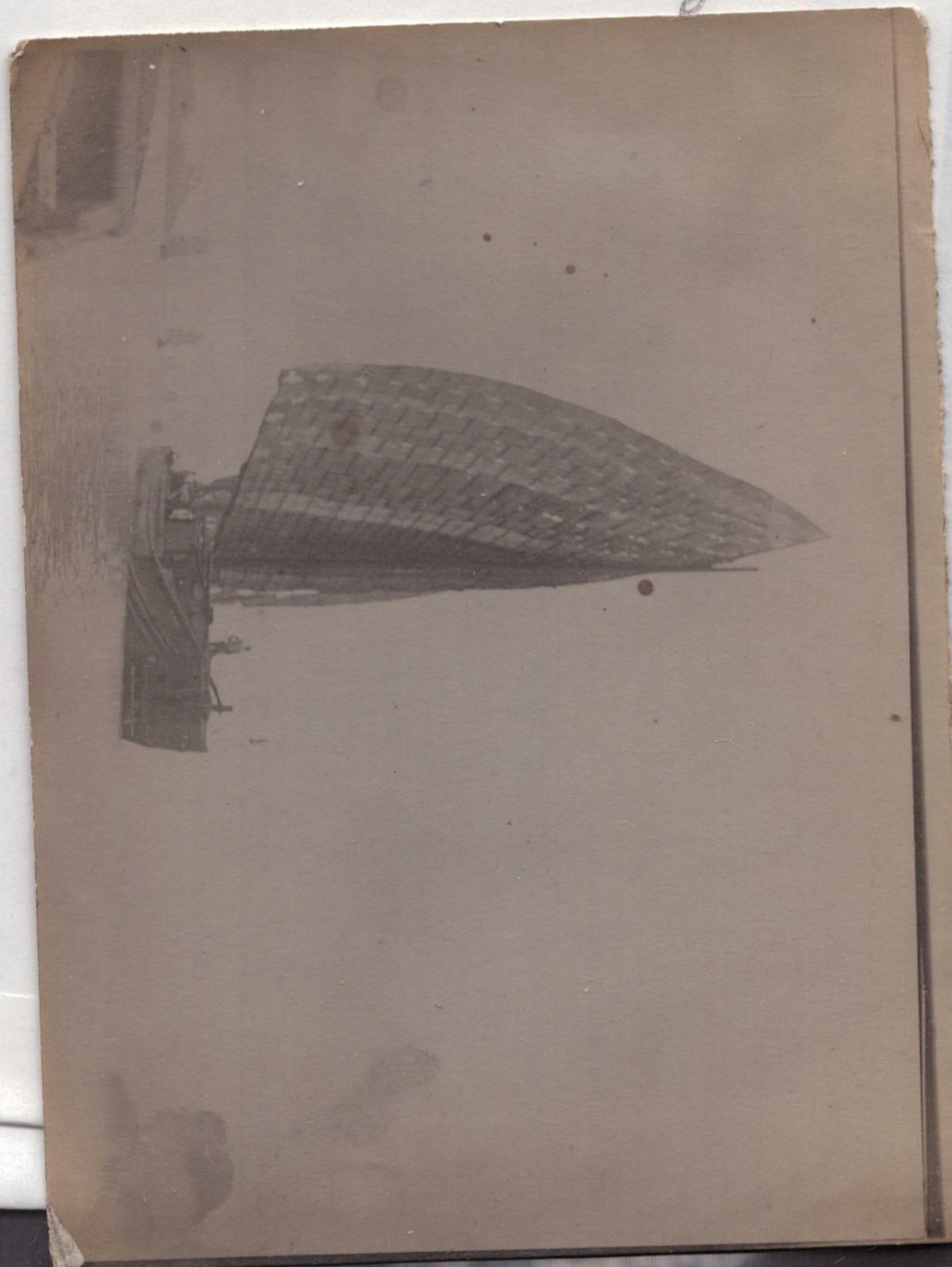
8 Kan River - 2 Pictures
from the Methodist
Compound in Nanchang.

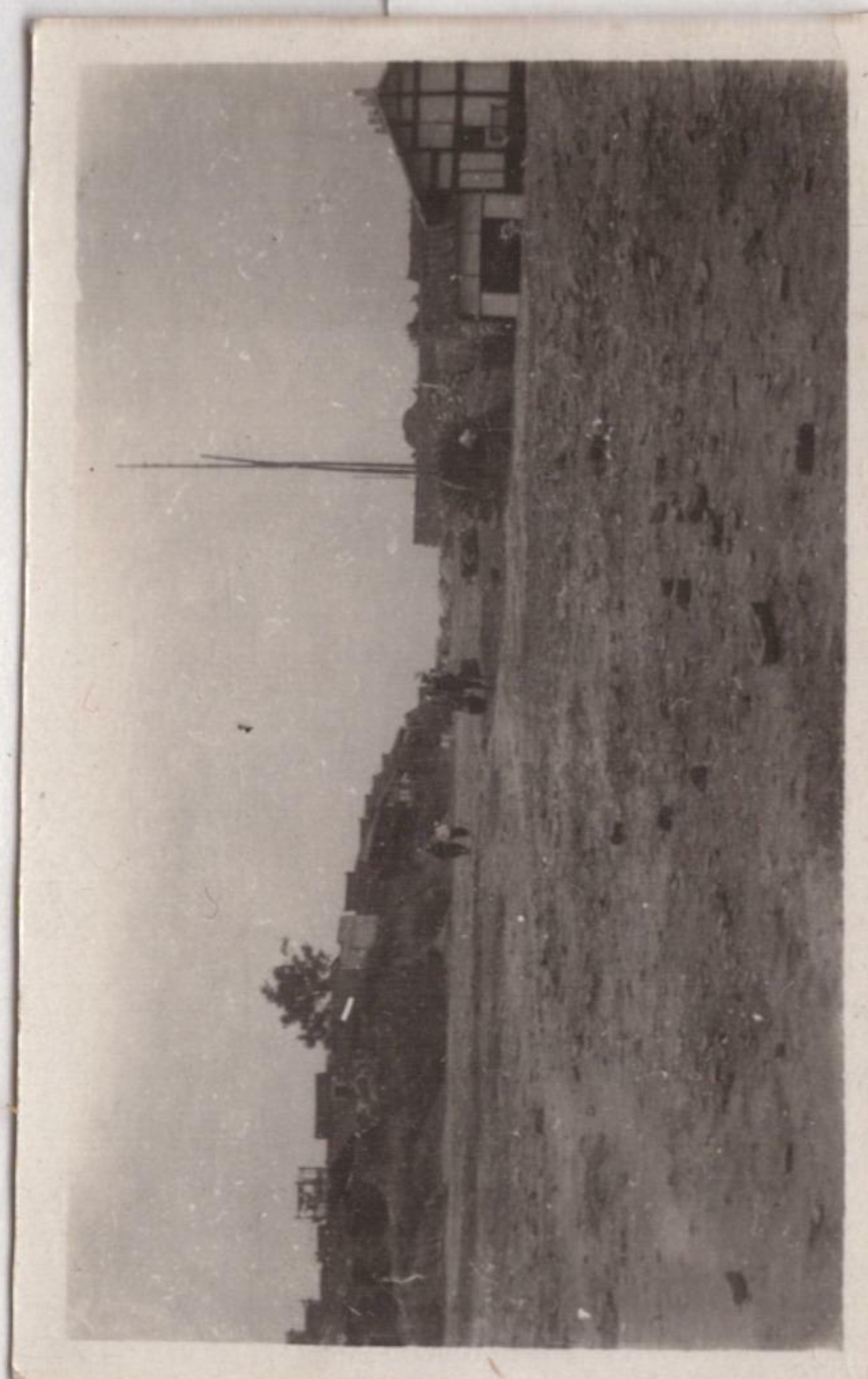
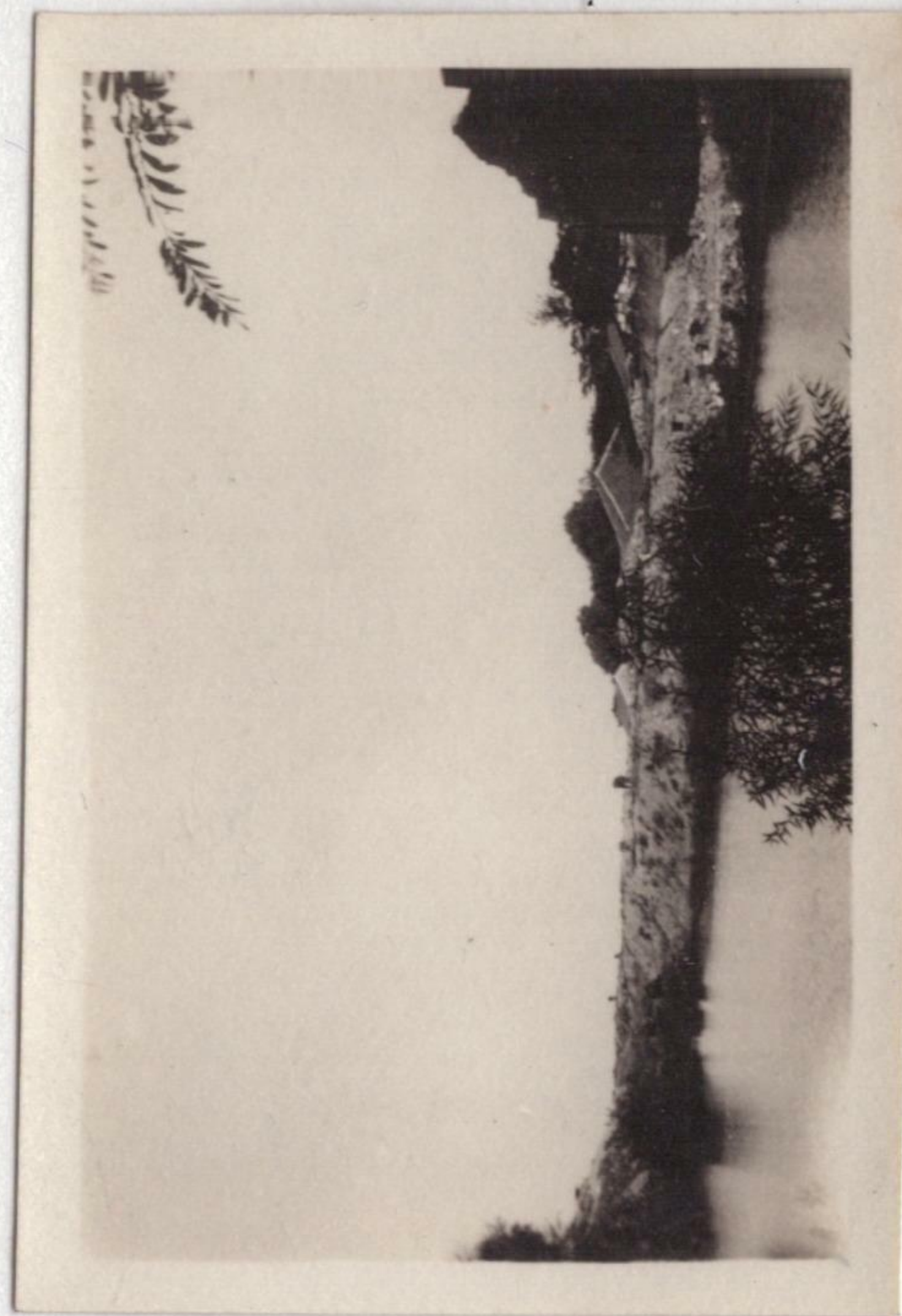


NN Boats on which we
travelled on the Kan
1918 - Nanchang



NN a Junk on the Kan
at Nanchang

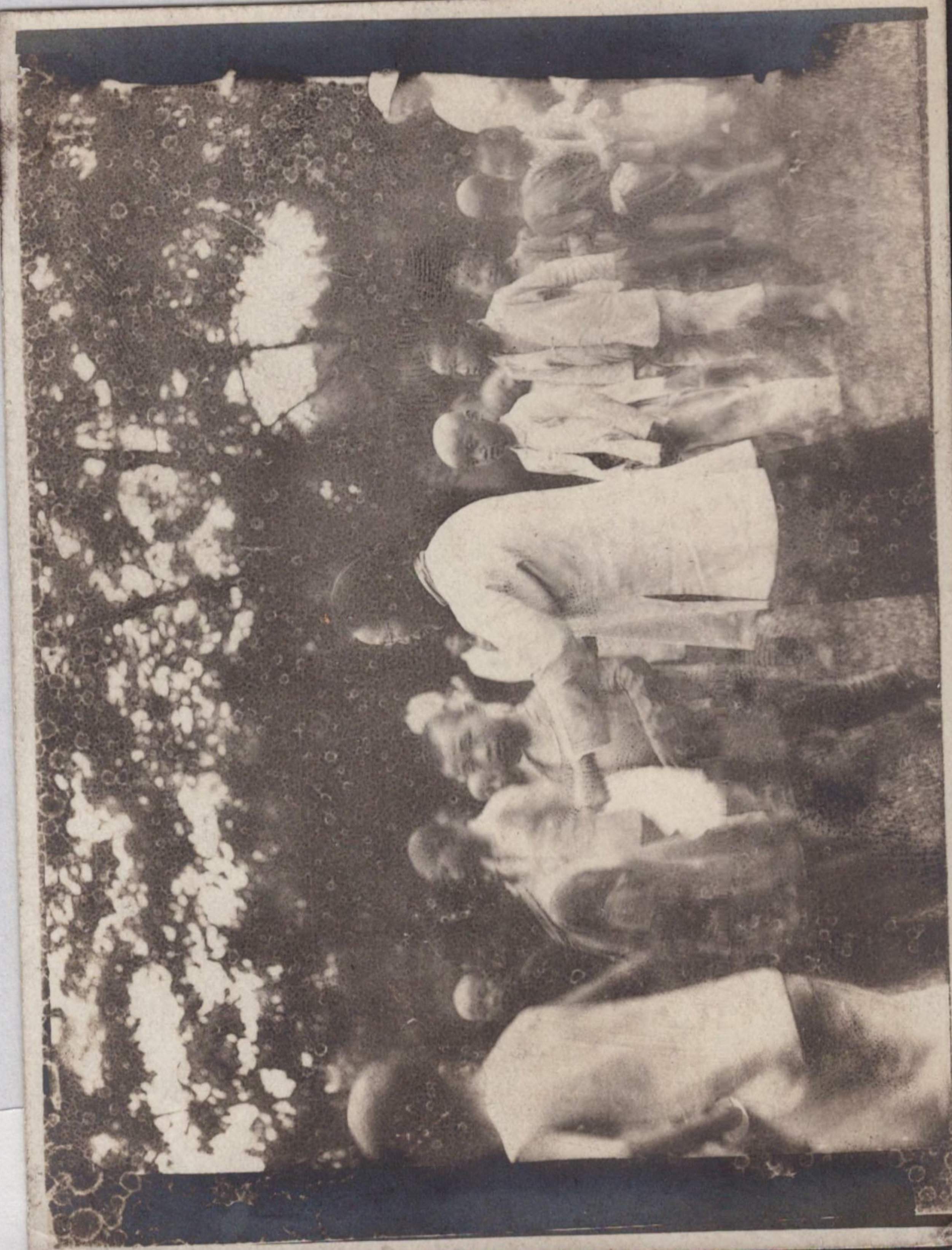




Handwritten text in cursive script, likely a caption or note related to the photograph above.

464

1-46 Nanchang.
A Party for Neighborhood
Children



NN Birthday Party -
Nanchang - ±1919,
Johnson's front steps



NN Nanchang, Showing
Snowballa C&B Planted.



NN Nanchang ±1923
On front steps
Blydenburg -
Pebbles
Charles & Walter
in the center



A party for
neighbor hood
children
held at the
night school



ye-
and,
own
24.

November
Evel from Salt
Mrs. Bergendick

298



NN



NN
6-62

That wonderful winter
when there was enough
snow to actually make
snow animals.

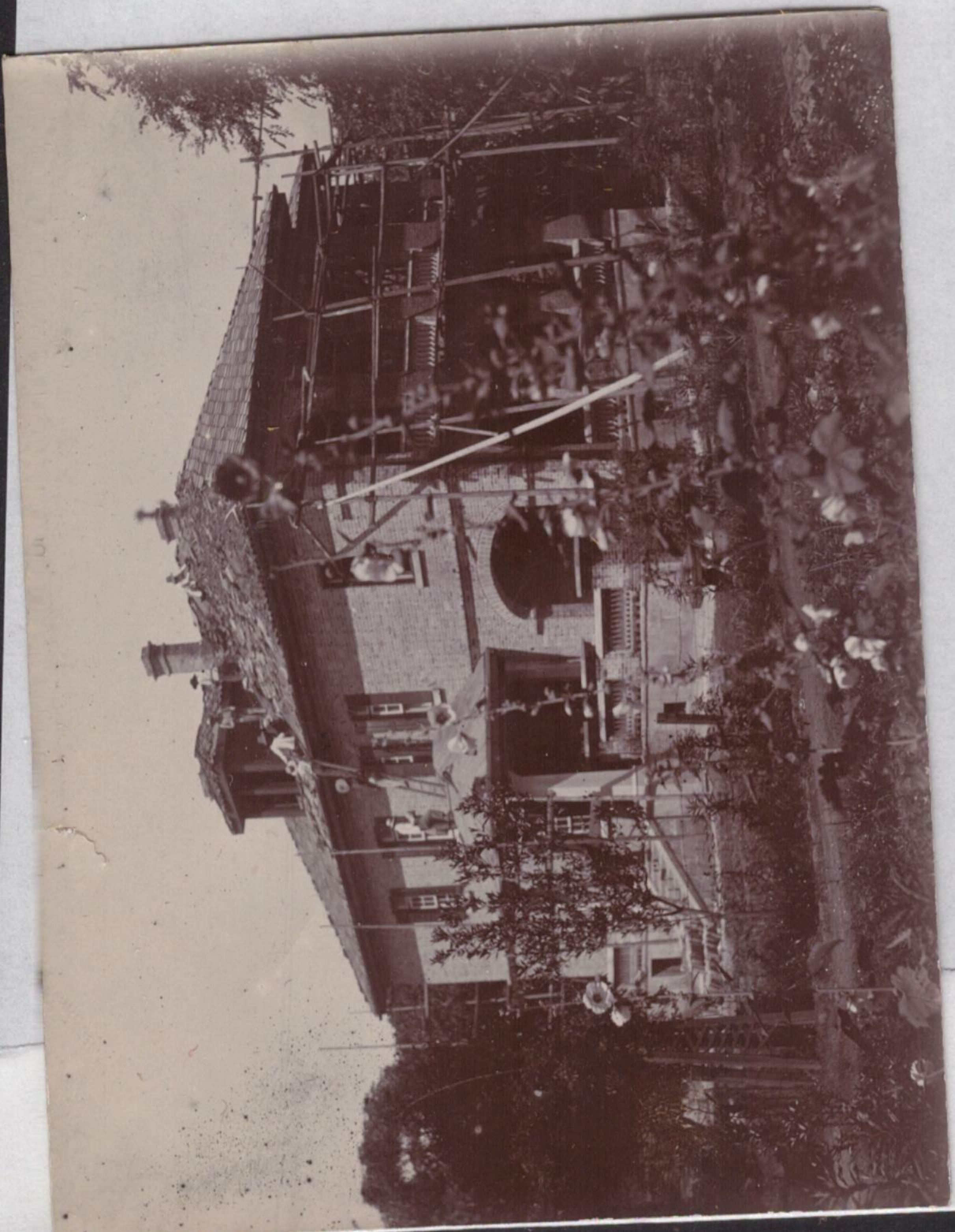


NN

7 PICTURES OF TREES
AROUND NANCHANG
about 2" x 3"



308 Tearing down the house destroyed by Termites
HCBU



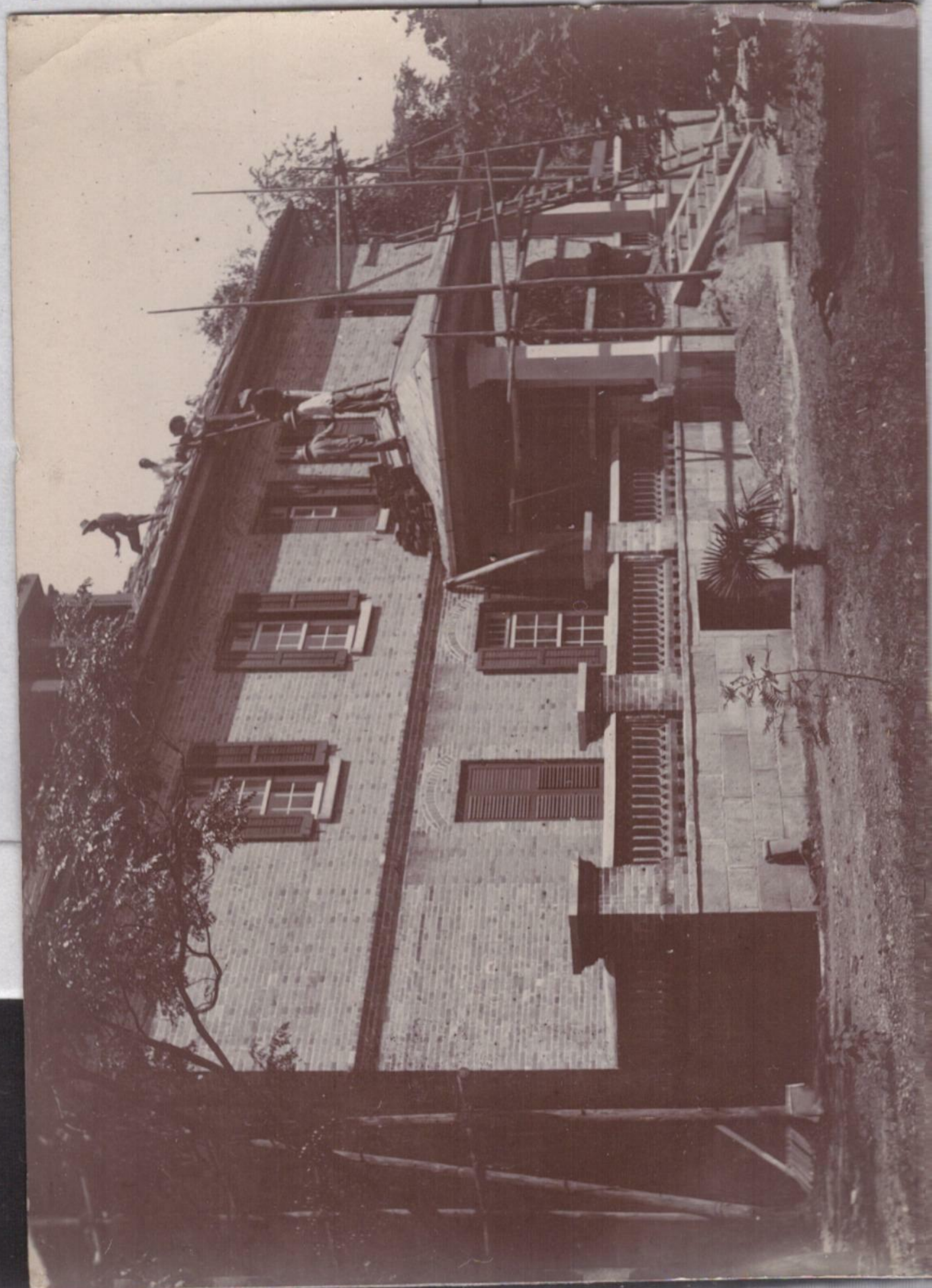
NN Our house - it looks all right from the outside!



nn The way Adirondack Goldenrod grows in Keaugea
The other flowers are Cosmos
± 1922
House that had to be torn down because of termites



309 Tearing down the house that termites destroyed. The property was added to the STEM Hospital grounds
± 1924 HCBU







"The Houseboat" - as purchased

Nov. 2, 1920



56



MM