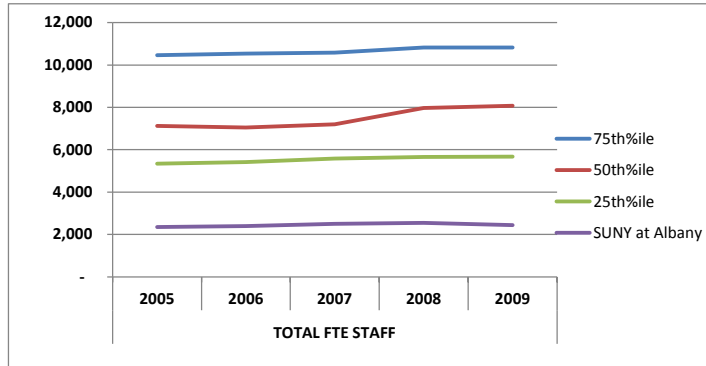


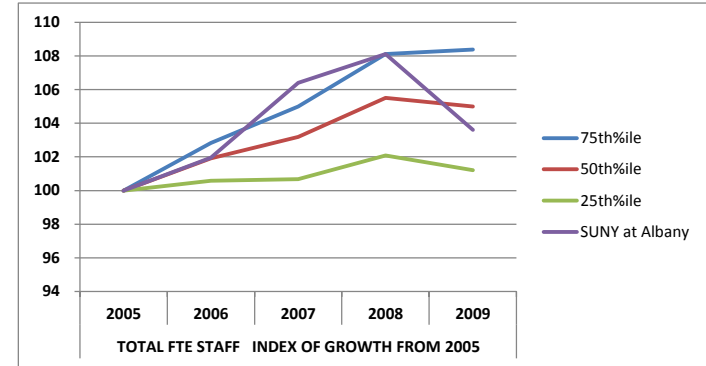
## Key Performance Indicators: Full Time Equivalent Staff

Target: SUNY at Albany						Target: SUNY at Albany					
TOTAL FTE STAFF						TOTAL FTE STAFF INDEX OF GROWTH FROM 2005					
	2005	2006	2007	2008	2009		2005	2006	2007	2008	2009
75th%ile	10,456	10,539	10,584	10,829	10,830	75th%ile	100	103	105	108	108
50th%ile	7,121	7,056	7,207	7,975	8,072	50th%ile	100	102	103	106	105
25th%ile	5,349	5,418	5,586	5,653	5,669	25th%ile	100	101	101	102	101
SUNY at Albany	2,355	2,401	2,506	2,546	2,440	at Albany	100	102	106	108	104
Index of Target to 50%ile	33	34	35	32	30		100	100	103	102	99
Count	63	63	63	63	63		63	63	63	63	63

Reference: Public Research Universities (very high research activity)

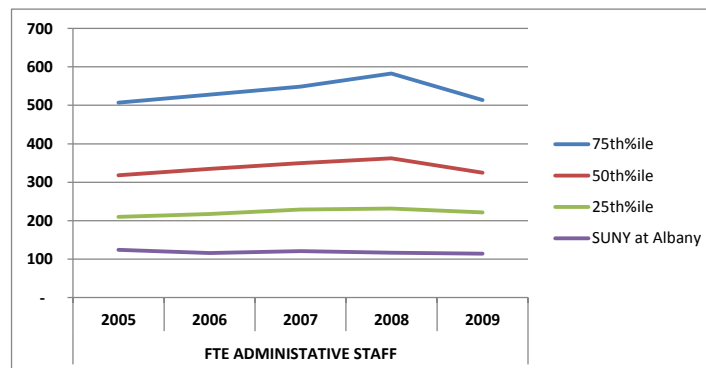


© 2010 JMA Inc

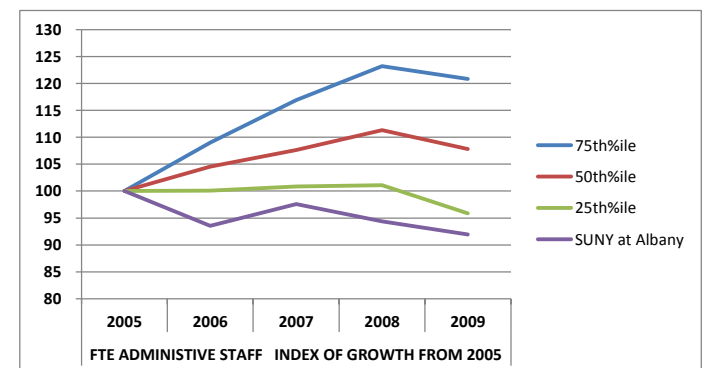


Target: SUNY at Albany						Target: SUNY at Albany					
FTE ADMINISTRATIVE STAFF						FTE ADMINISTRATIVE STAFF INDEX OF GROWTH FROM 2005					
	2005	2006	2007	2008	2009		2005	2006	2007	2008	2009
75th%ile	507	528	549	583	514	75th%ile	100	109	117	123	121
50th%ile	318	335	350	362	325	50th%ile	100	105	108	111	108
25th%ile	210	217	229	232	222	25th%ile	100	100	101	101	96
SUNY at Albany	124	116	121	117	114	at Albany	100	94	98	94	92
Index of Target to 50%ile	39	35	35	32	35		100	89	91	85	85
Count	63	63	63	63	63		62	62	62	62	62

Reference: Public Research Universities (very high research activity)



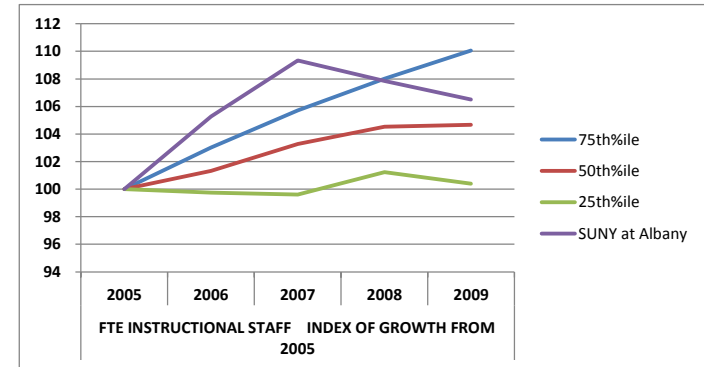
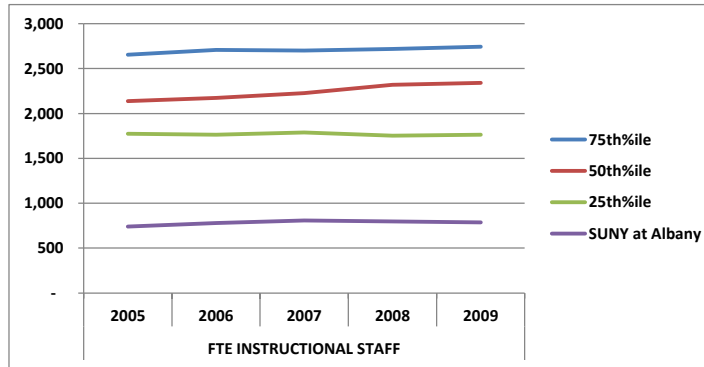
© 2010 JMA Inc



## Key Performance Indicators: Full Time Equivalent Staff

Target: SUNY at Albany						Target: SUNY at Albany					
FTE INSTRUCTIONAL STAFF						FTE INSTRUCTIONAL STAFF	INDEX OF GROWTH FROM 2005				
	2005	2006	2007	2008	2009		2005	2006	2007	2008	2009
75th%ile	2,656	2,707	2,703	2,718	2,744	75th%ile	100	103	106	108	110
50th%ile	2,139	2,175	2,226	2,319	2,342	50th%ile	100	101	103	105	105
25th%ile	1,776	1,762	1,788	1,752	1,763	25th%ile	100	100	100	101	100
SUNY at Albany	739	778	808	797	787	at Albany	100	105	109	108	106
Index of Target to 50%ile	35	36	36	34	34		100	104	106	103	102
Count	63	63	63	63	63		63	63	63	63	63

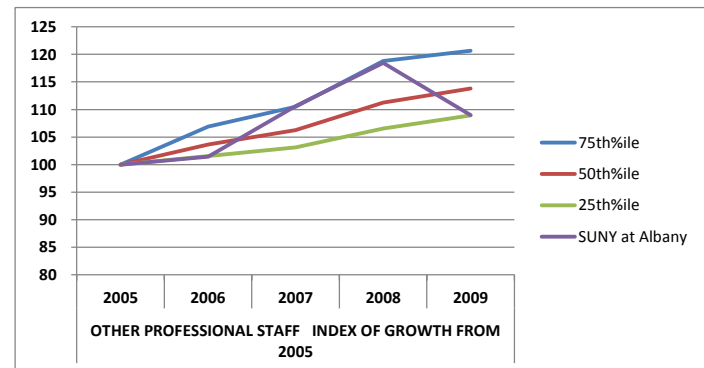
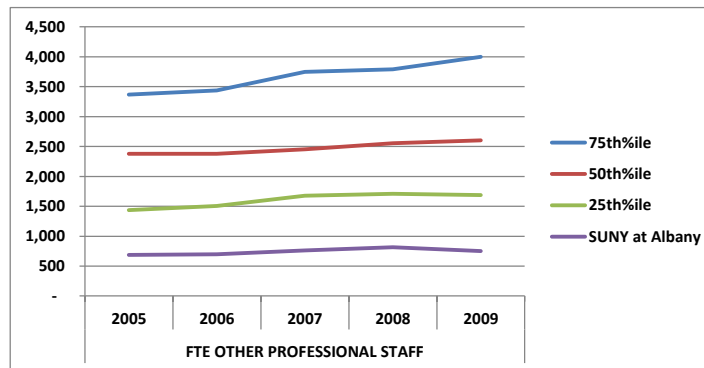
Reference: Public Research Universities (very high research activity)



© 2010 JMA Inc

Target: SUNY at Albany						Target: SUNY at Albany					
FTE OTHER PROFESSIONAL STAFF						OTHER PROFESSIONAL STAFF	INDEX OF GROWTH FROM 2005				
	2005	2006	2007	2008	2009		2005	2006	2007	2008	2009
75th%ile	3,368	3,439	3,748	3,791	3,997	75th%ile	100	107	111	119	121
50th%ile	2,380	2,379	2,455	2,554	2,603	50th%ile	100	104	106	111	114
25th%ile	1,437	1,504	1,678	1,707	1,689	25th%ile	100	102	103	107	109
SUNY at Albany	689	699	762	816	751	at Albany	100	101	111	118	109
Index of Target to 50%ile	29	29	31	32	29		100	98	104	106	96
Count	63	63	63	63	63		60	60	60	60	60

Reference: Public Research Universities (very high research activity)

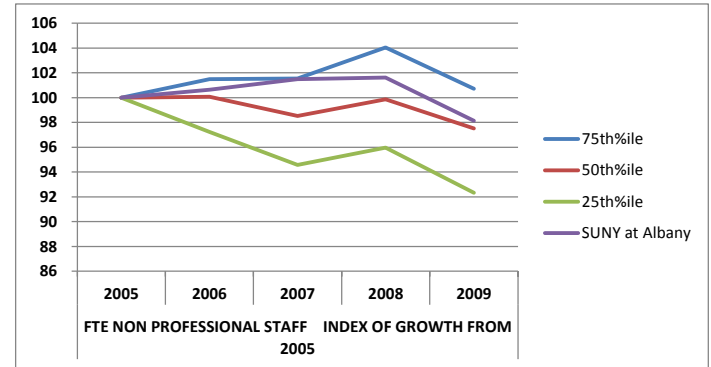
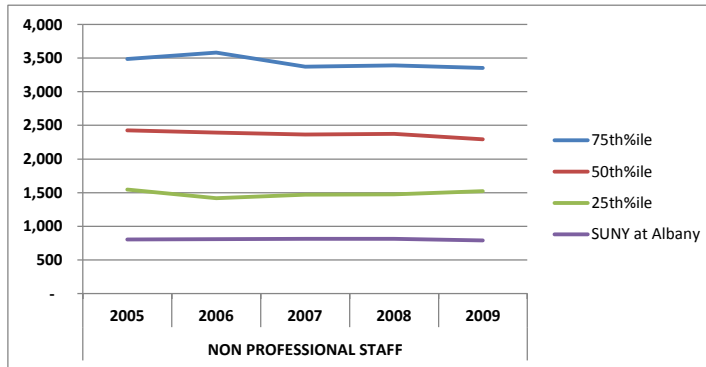


© 2010 JMA Inc

## Key Performance Indicators: Full Time Equivalent Staff

Target: SUNY at Albany						Target: SUNY at Albany					
NON PROFESSIONAL STAFF						FTE NON PROFESSIONAL STAFF INDEX OF GROWTH FROM 2005					
	2005	2006	2007	2008	2009		2005	2006	2007	2008	2009
75th%ile	3,485	3,582	3,371	3,390	3,352	75th%ile	100	101	102	104	101
50th%ile	2,426	2,395	2,365	2,374	2,294	50th%ile	100	100	99	100	98
25th%ile	1,546	1,419	1,472	1,474	1,523	25th%ile	100	97	95	96	92
SUNY at Albany	803	808	815	816	788	at Albany	100	101	101	102	98
Index of Target to 50%ile	33	34	34	34	34		100	101	103	102	101
Count	63	63	63	63	63		63	63	63	63	63

Reference: Public Research Universities (very high research activity)



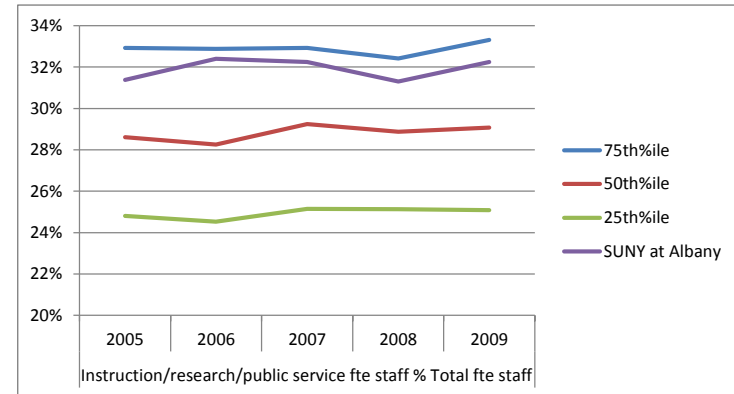
## Full Time Equivalent Staff Distribution

Target: SUNY at Albany

		Instruction/research/public service fte staff % Total fte staff				
		2005	2006	2007	2008	2009
75th%ile		33%	33%	33%	32%	33%
50th%ile		29%	28%	29%	29%	29%
25th%ile		25%	25%	25%	25%	25%
SUNY at Albany		31%	32%	32%	31%	32%
Index of Target to 50%ile		110	115	110	108	111
Count		63	63	63	63	63

Reference: Public Research Universities (very high research activity)

Target: SUNY at Albany



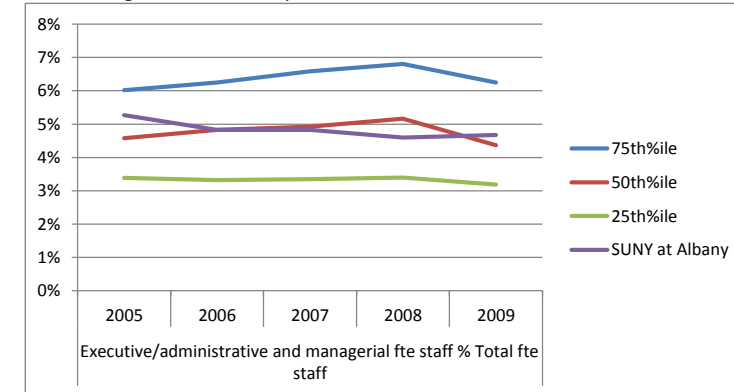
Reference: Public Research Universities (very high research activity)

Target: SUNY at Albany

		Executive/administrative and managerial fte staff % Total fte staff				
		2005	2006	2007	2008	2009
75th%ile		6%	6%	7%	7%	6%
50th%ile		5%	5%	5%	5%	4%
25th%ile		3%	3%	3%	3%	3%
SUNY at Albany		5%	5%	5%	5%	5%
Index of Target to 50%ile		115	100	98	89	107
Count		63	63	63	63	63

Reference: Public Research Universities (very high research activity)

Target: SUNY at Albany



Reference: Public Research Universities (very high research activity)

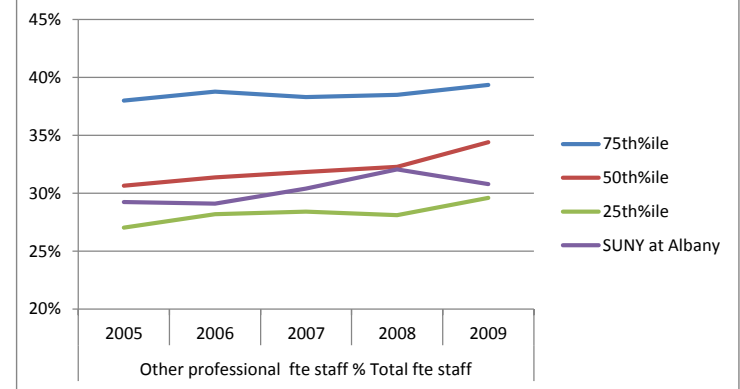
### Full Time Equivalent Staff Distribution

Target: SUNY at Albany

	Other professional fte staff % Total fte staff				
	2005	2006	2007	2008	2009
75th%ile	38%	39%	38%	39%	39%
50th%ile	31%	31%	32%	32%	34%
25th%ile	27%	28%	28%	28%	30%
SUNY at Albany	29%	29%	30%	32%	31%
Index of Target to 50%ile	95	93	96	99	89
Count	63	63	63	63	63

Reference: Public Research Universities (very high research activity)

Target: SUNY at Albany



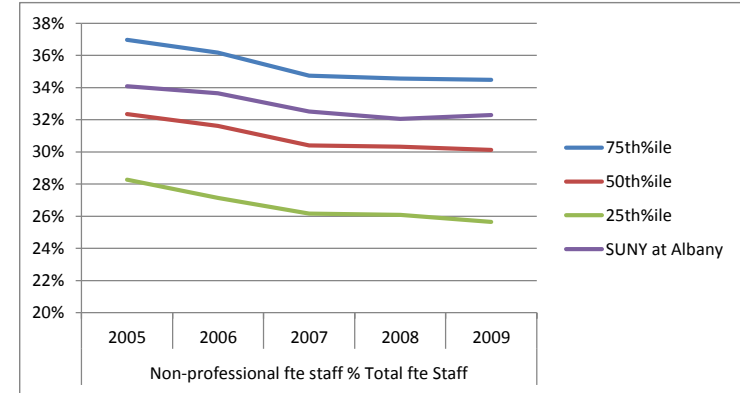
Reference: Public Research Universities (very high research activity)

Target: SUNY at Albany

	Non-professional fte staff % Total fte Staff				
	2005	2006	2007	2008	2009
75th%ile	37%	36%	35%	35%	34%
50th%ile	32%	32%	30%	30%	30%
25th%ile	28%	27%	26%	26%	26%
SUNY at Albany	34%	34%	33%	32%	32%
Index of Target to 50%ile	105	106	107	106	107
Count	63	63	63	63	63

Reference: Public Research Universities (very high research activity)

Target: SUNY at Albany



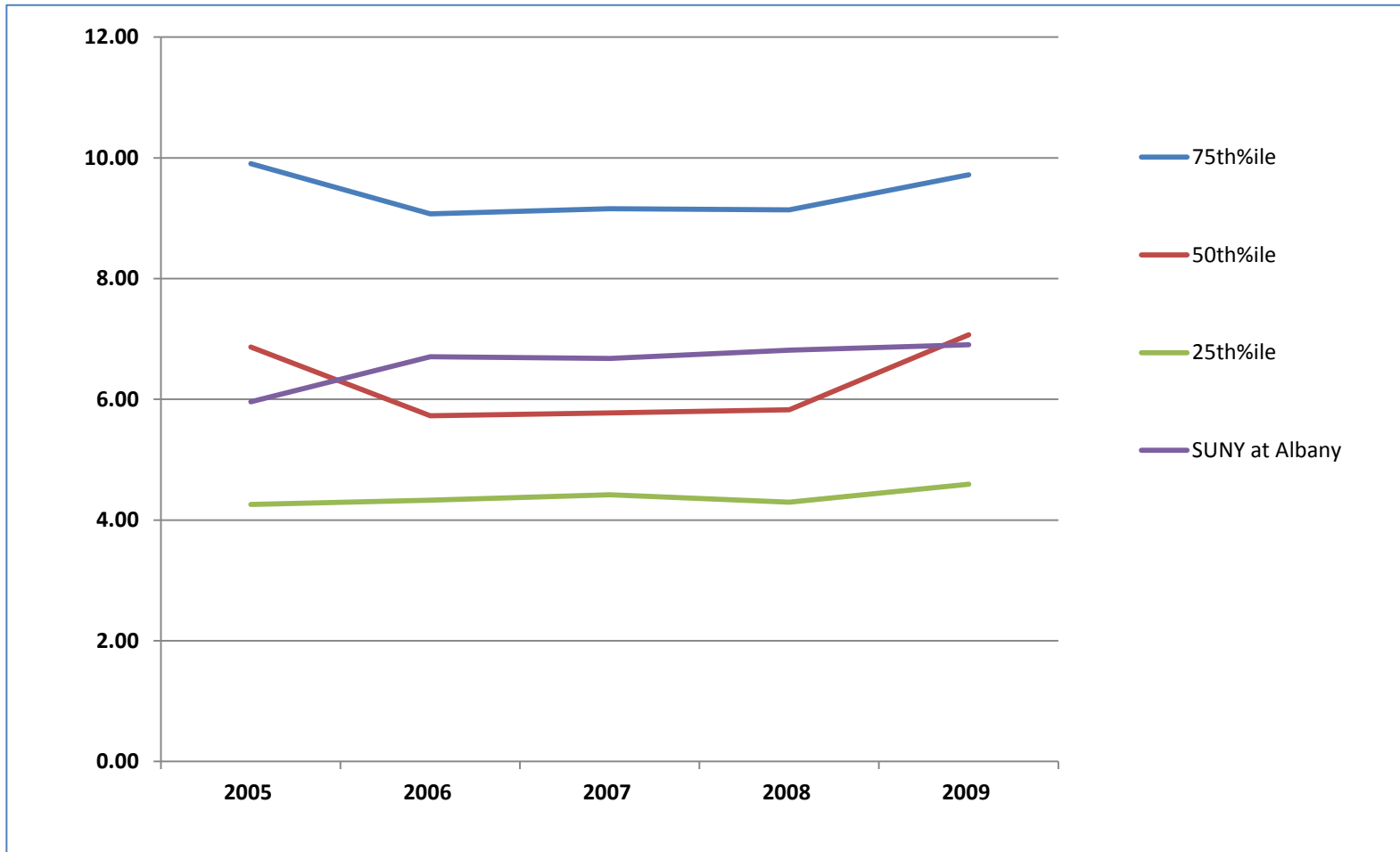
Reference: Public Research Universities (very high research activity)

### Ratio of non-Faculty FTE to Faculty FTE

	2005	2006	2007	2008	2009
75th%ile	9.91	9.07	9.16	9.14	9.72
50th%ile	6.86	5.73	5.78	5.83	7.07
25th%ile	4.26	4.33	4.42	4.30	4.59
<b>SUNY at Albany</b>	5.96	6.71	6.68	6.81	6.90
TARGET INDEXED TO 50th%ile	87	117	116	117	98
Count	63	63	63	63	63

© 2010 JMA Inc.

Group: **Public Research Universities (very high research activity)**

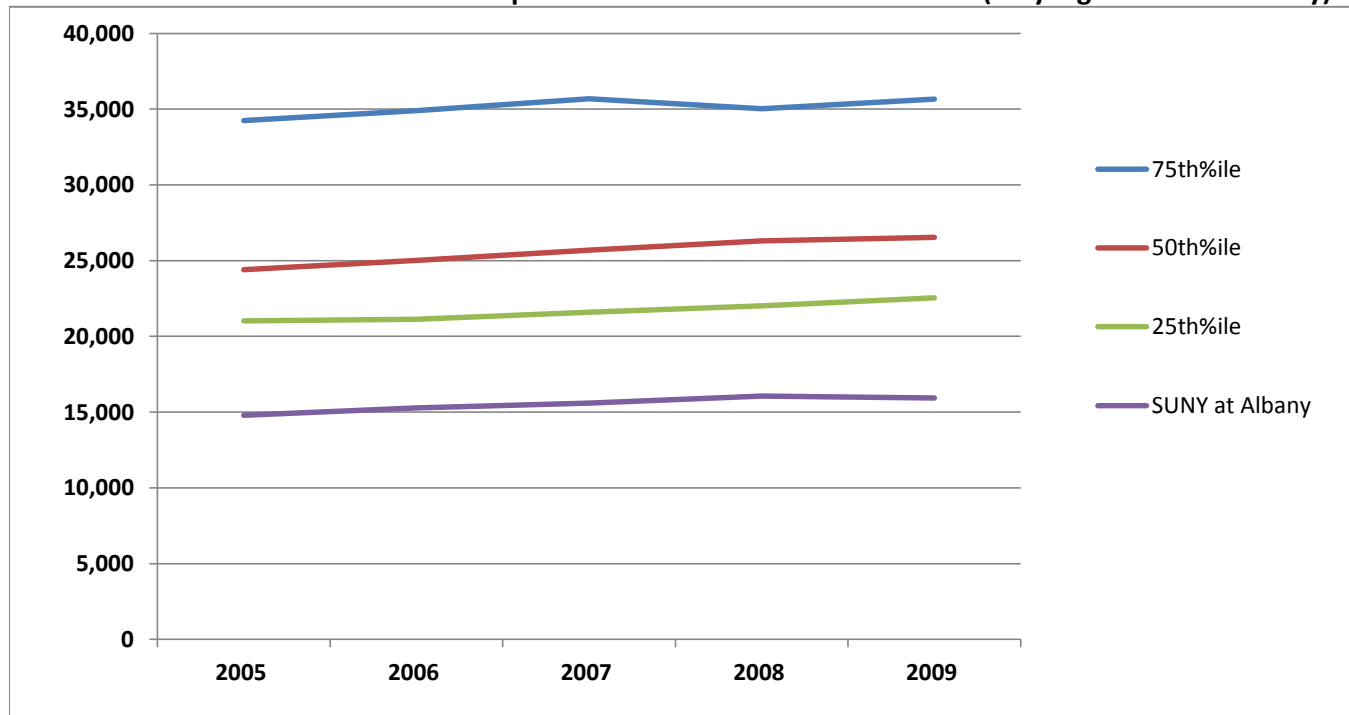


### Fall Student FTE

	2005	2006	2007	2008	2009
75th%ile	34,242	34,905	35,684	35,031	35,656
50th%ile	24,396	25,010	25,685	26,301	26,543
25th%ile	21,032	21,140	21,598	22,022	22,544
<b>SUNY at Albany</b>	14,785	15,286	15,590	16,068	15,930
TARGET INDEXED TO 50th%ile	<b>61</b>	<b>61</b>	<b>61</b>	<b>61</b>	<b>60</b>
Count	63	63	63	63	63

© 2010 JMA Inc.

Group: **Public Research Universities (very high research activity)**

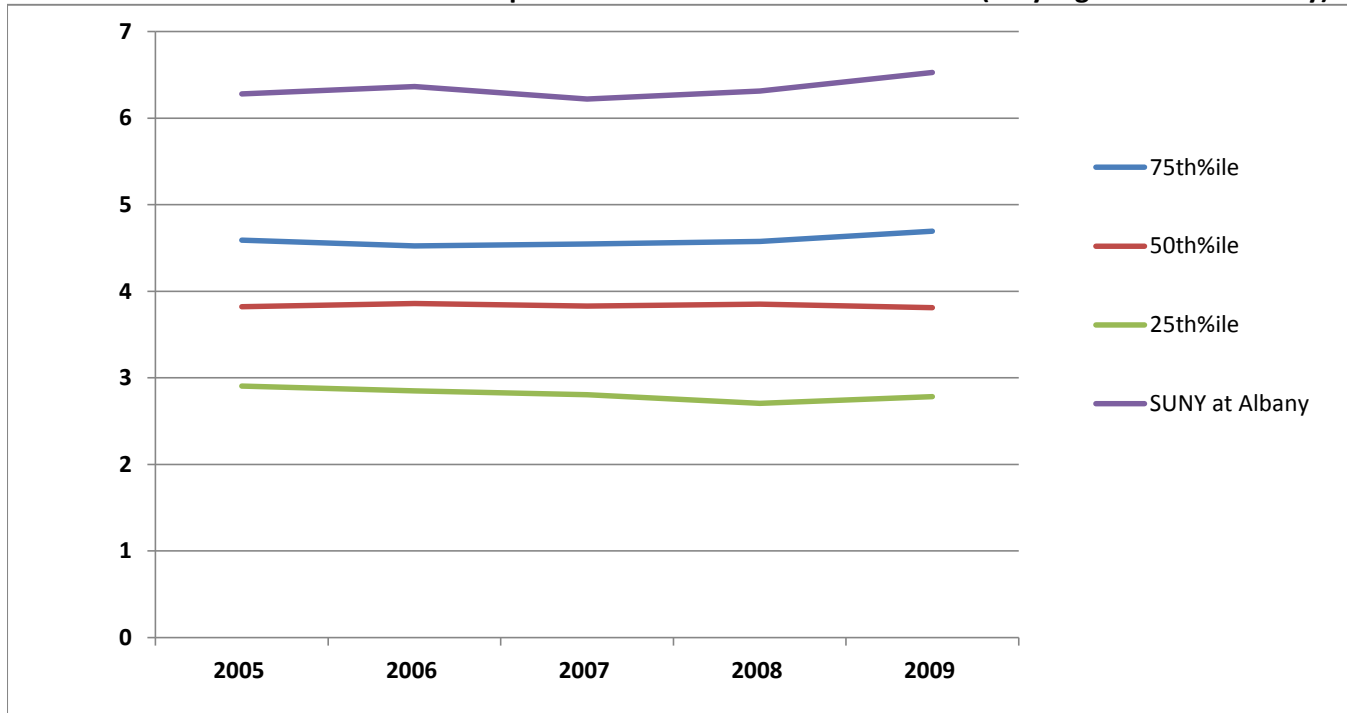


### Student/Total Staff Ratio

	2005	2006	2007	2008	2009
75th%ile	5	5	5	5	5
50th%ile	4	4	4	4	4
25th%ile	3	3	3	3	3
<b>SUNY at Albany</b>	6	6	6	6	7
<b>TARGET INDEXED TO 50th%ile</b>	<b>164</b>	<b>165</b>	<b>162</b>	<b>164</b>	<b>171</b>
Count	63	63	63	63	63

© 2010 JMA Inc.

Group: **Public Research Universities (very high research activity)**



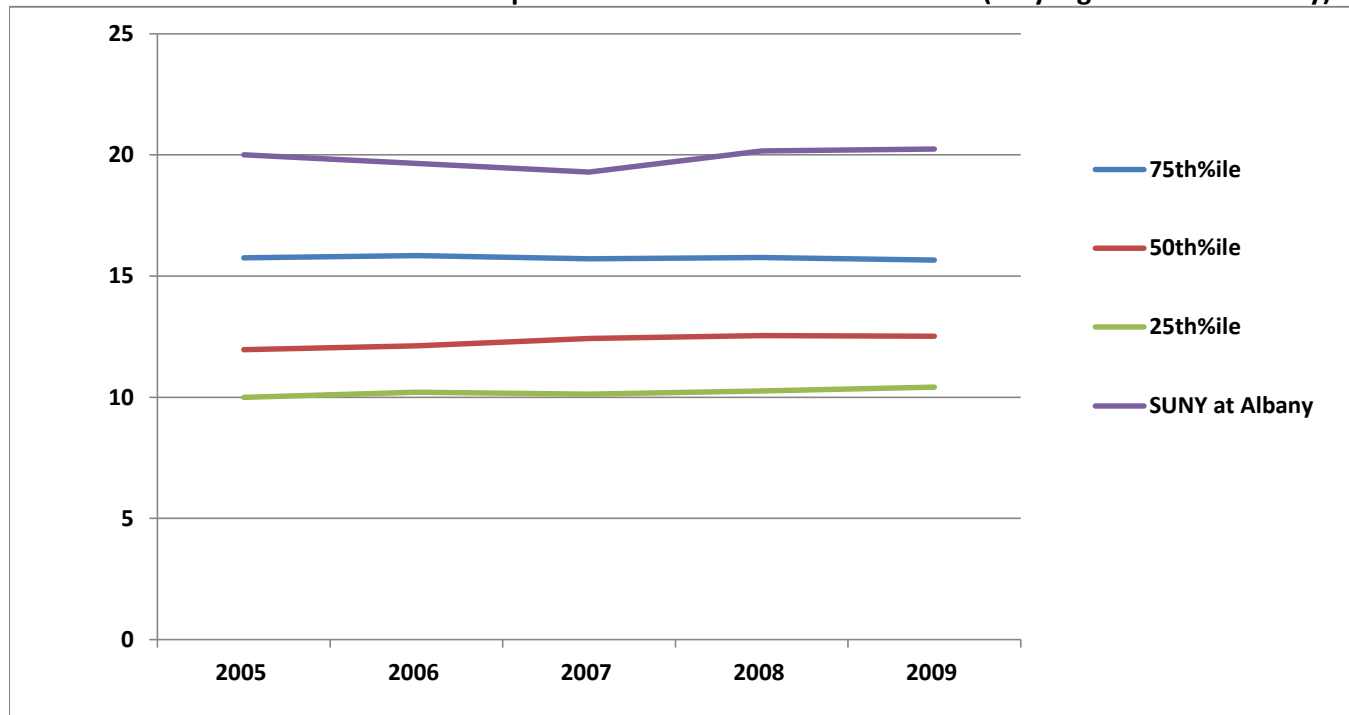


### Student/Faculty (Instruction-Research-Public Service) Ratio

	2005	2006	2007	2008	2009
75th%ile	16	16	16	16	16
50th%ile	12	12	12	13	13
25th%ile	10	10	10	10	10
<b>SUNY at Albany</b>	20	20	19	20	20
<b>TARGET INDEXED TO 50th%ile</b>	<b>167</b>	<b>162</b>	<b>155</b>	<b>161</b>	<b>162</b>
Count	63	63	63	63	63

© 2010 JMA Inc.

Group: **Public Research Universities (very high research activity)**

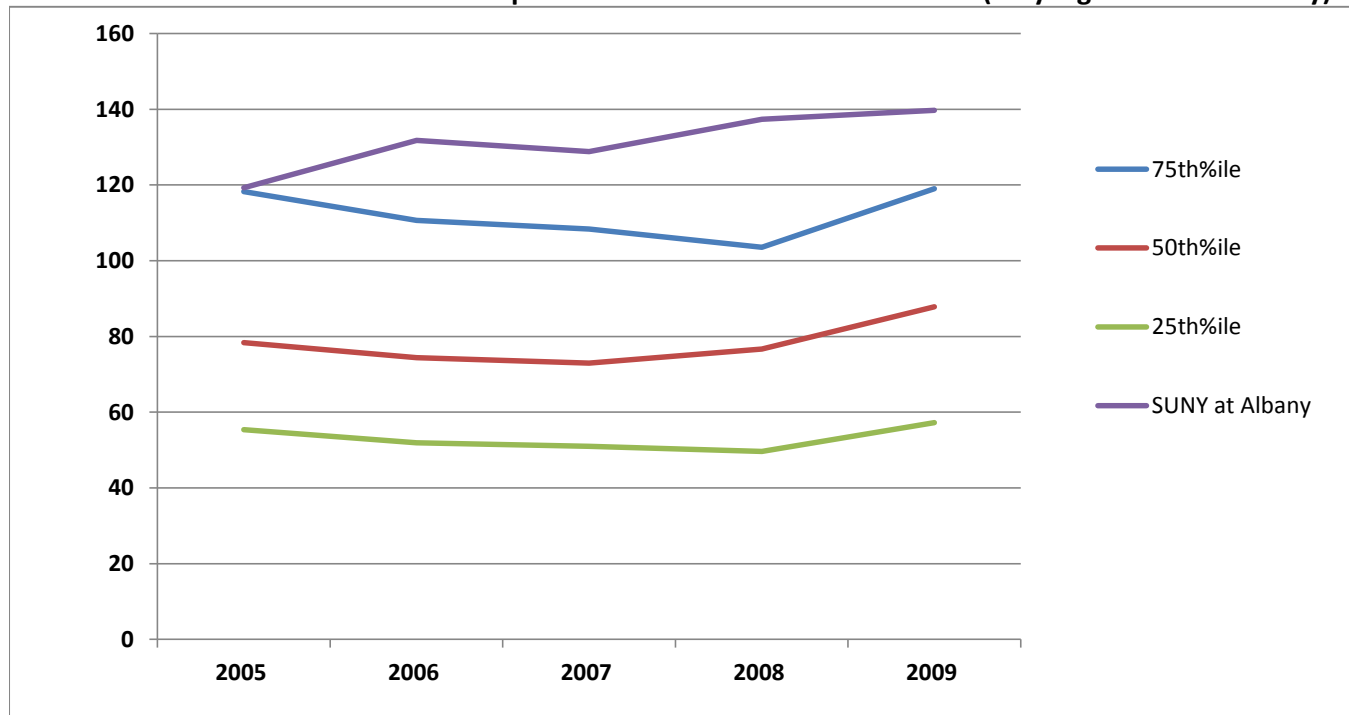


### Student/Executive, Administrative, Managerial Ratio

	2005	2006	2007	2008	2009
75th%ile	118	111	108	104	119
50th%ile	78	74	73	77	88
25th%ile	55	52	51	50	57
<b>SUNY at Albany</b>	119	132	129	137	140
<b>TARGET INDEXED TO 50th%ile</b>	<b>152</b>	<b>177</b>	<b>177</b>	<b>179</b>	<b>159</b>
Count	63	63	63	63	63

© 2010 JMA Inc.

Group: **Public Research Universities (very high research activity)**

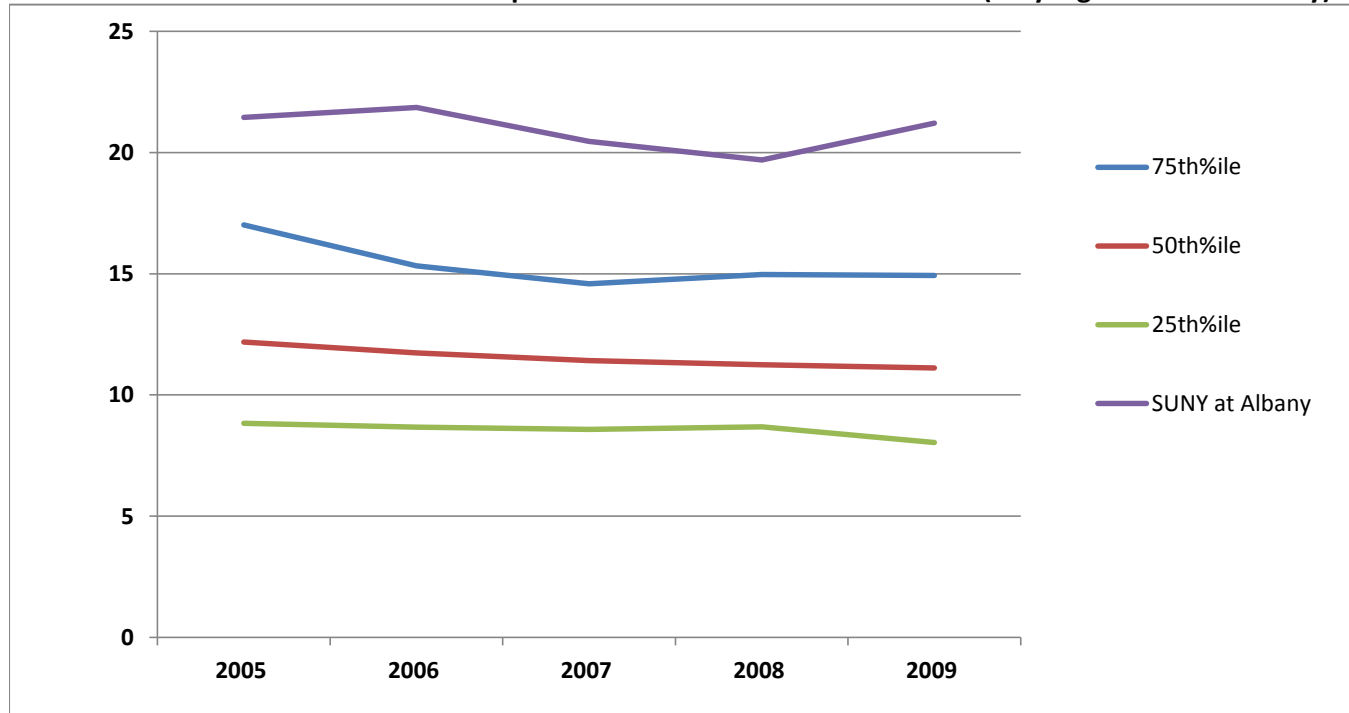


### Student/Other Professional Ratio

	2005	2006	2007	2008	2009
75th%ile	17	15	15	15	15
50th%ile	12	12	11	11	11
25th%ile	9	9	9	9	8
<b>SUNY at Albany</b>	21	22	20	20	21
<b>TARGET INDEXED TO 50th%ile</b>	<b>176</b>	<b>186</b>	<b>179</b>	<b>175</b>	<b>191</b>
Count	63	63	63	63	63

© 2010 JMA Inc.

Group: **Public Research Universities (very high research activity)**

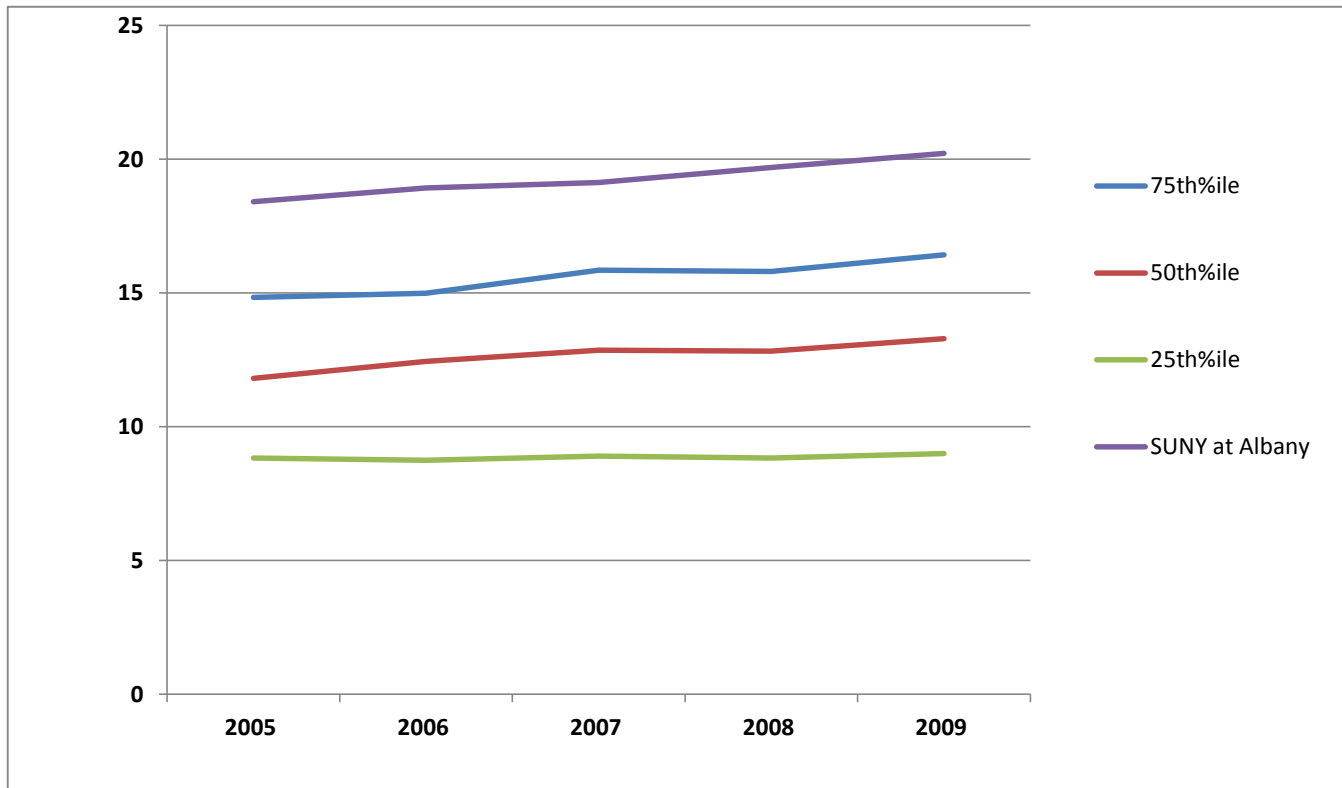


### Student/Non Professional Staff Ratio

	2005	2006	2007	2008	2009
75th%ile	15	15	16	16	16
50th%ile	12	12	13	13	13
25th%ile	9	9	9	9	9
<b>SUNY at Albany</b>	18	19	19	20	20
<b>TARGET INDEXED TO 50th%ile</b>	<b>156</b>	<b>152</b>	<b>149</b>	<b>154</b>	<b>152</b>
Count	63	63	63	63	63

© 2010 JMA Inc.

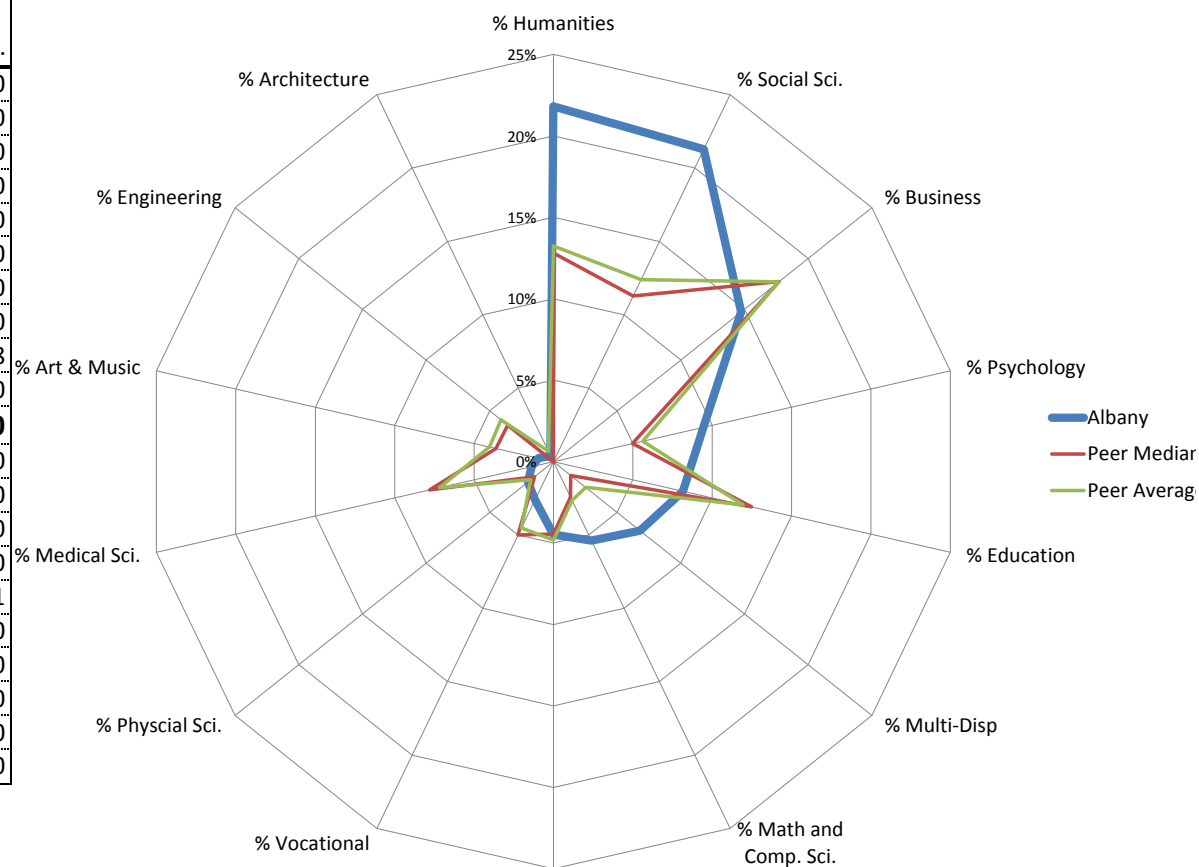
Group: **Public Research Universities (very high research activity)**



### UAlbany's 20 Closest SUNY Benchmark Institutions - preliminary pass

Institution Name	Enrollment				Degrees					
	Total headcount	% Part-time	% Under-represented minority	% Grad. & Prof.	Total FTE	# Bacc.	% Bacc.	Masters	# Doctoral	# Prof.
U Wyoming	12,427	22.7%	7.2%	21.6%	10,697	1,747	73.7%	423	200	0
U Delaware	21,138	12.6%	10.8%	17.2%	19,506	3,569	75.3%	727	251	0
Miami U-Oxford	16,884	8.3%	6.6%	13.1%	16,001	3,318	81.4%	440	55	0
U Mass-Boston	14,912	40.3%	21.5%	26.0%	11,219	1,608	62.5%	922	41	0
U New Hampshire	15,253	12.9%	3.7%	17.6%	14,022	2,592	71.1%	843	56	0
U California-Santa Cruz	16,775	3.1%	20.8%	9.0%	16,461	3,271	88.9%	262	145	0
U California-Riverside	19,384	3.1%	33.9%	12.3%	19,021	3,055	83.7%	406	188	0
Utah State U	15,612	19.4%	3.9%	11.5%	13,770	2,968	78.7%	696	88	0
George Mason U	32,067	43.9%	17.3%	38.6%	23,276	4,009	57.8%	2,499	202	228
Florida Atlantic U	27,637	46.1%	36.0%	17.3%	19,909	4,467	76.8%	1,102	90	0
<b>UAlbany</b>	<b>18,020</b>	<b>18.5%</b>	<b>16.3%</b>	<b>27.2%</b>	<b>15,930</b>	<b>2,895</b>	<b>68.1%</b>	<b>1,225</b>	<b>131</b>	<b>0</b>
Ball State University	21,401	17.3%	8.9%	17.1%	19,090	3,057	67.9%	1,004	68	0
U Miss. Main Campus	15,932	12.3%	16.3%	17.1%	14,725	2,506	76.1%	448	337	0
U Missouri-St Louis	16,534	57.7%	17.3%	21.6%	10,739	2,018	69.7%	771	107	0
U Oregon	22,335	10.1%	6.7%	17.1%	20,953	3,460	73.7%	899	334	0
U Memphis	21,424	31.4%	38.5%	22.0%	17,308	2,590	69.9%	862	132	121
UNC Greensboro	21,306	33.1%	27.5%	18.1%	17,001	2,441	69.1%	985	107	0
Wichita State U	14,601	35.4%	12.9%	21.0%	11,441	1,691	68.5%	648	61	0
Old Dominion U	24,013	34.9%	24.8%	24.0%	18,858	2,955	68.2%	1,257	122	0
U Montana	14,921	21.3%	6.0%	14.0%	12,990	1,759	64.8%	475	95	140
Portland State U	27,901	40.1%	9.0%	22.5%	21,083	3,325	66.9%	1,577	68	0

### Discipline Match for Degrees Awarded



Institution Name	Discipline Mix											% Biological Sci.							
	% Agricultural	% Architecture	% Art & Music	% Biological Sci.	% Business	% Education	% Engineering	% Humanities	% Law	% Math and Comp. Sci.	% Medical Sci.	% Physical Sci.	% Psychology	% Social Sci.	% Infor. Sci.	% Technology	% Vocational	% Multi-Disp	
U Wyoming	4.8%	0.0%	2.4%	6.2%	13.0%	14.7%	9.2%	6.3%	3.4%	1.7%	10.3%	2.4%	3.9%	9.6%	3.8%	0.0%	7.2%	0.9%	
U Delaware	3.3%	0.0%	3.1%	4.4%	17.9%	11.0%	7.4%	14.1%	0.2%	2.7%	6.6%	2.0%	3.0%	13.6%	2.9%	0.4%	5.6%	1.7%	
Miami U-Oxford	0.6%	2.2%	3.1%	6.9%	22.8%	11.0%	2.0%	13.7%	0.0%	2.2%	6.2%	1.4%	6.0%	10.0%	4.4%	1.2%	5.0%	1.3%	
U Mass-Boston	0.0%	0.0%	1.1%	4.7%	19.3%	14.5%	0.0%	13.0%	0.3%	2.5%	11.8%	1.4%	9.1%	14.9%	0.0%	0.0%	6.0%	1.4%	
U New Hampshire	6.2%	0.1%	3.2%	4.5%	17.7%	6.5%	7.0%	10.6%	0.0%	2.3%	10.4%	1.7%	5.5%	11.3%	4.3%	1.1%	6.2%	1.4%	
U California-Santa Cruz	6.0%	0.0%	9.7%	13.8%	7.9%	2.5%	1.6%	18.7%	1.8%	3.9%	0.0%	5.4%	9.5%	17.9%	0.0%	0.0%	0.0%	1.3%	
U California-Riverside	1.5%	0.0%	3.9%	13.0%	19.7%	2.2%	5.6%	17.3%	0.0%	4.8%	0.0%	2.3%	8.8%	17.4%	0.0%	0.0%	0.0%	3.7%	
Utah State U	4.6%	0.8%	3.7%	3.2%	16.9%	17.8%	7.9%	9.6%	0.4%	3.2%	5.1%	1.4%	3.5%	8.0%	2.7%	0.2%	5.9%	5.3%	
George Mason U	0.0%	0.0%	4.3%	3.5%	14.9%	13.1%	7.4%	12.0%	3.4%	3.5%	6.6%	1.2%	5.4%	16.1%	1.7%	0.0%	2.0%	4.8%	
Florida Atlantic U	0.0%	1.7%	3.3%	5.2%	25.0%	13.2%	4.0%	11.1%	0.0%	2.1%	7.9%	1.3%	4.7%	10.8%	3.5%	0.0%	5.9%	0.2%	
<b>UAlbany</b>	<b>0.0%</b>	<b>0.4%</b>	<b>0.9%</b>	<b>4.5%</b>	<b>14.7%</b>	<b>8.2%</b>	<b>0.5%</b>	<b>21.8%</b>	<b>0.0%</b>	<b>5.4%</b>	<b>1.4%</b>	<b>2.0%</b>	<b>9.4%</b>	<b>21.3%</b>	<b>0.0%</b>	<b>0.0%</b>	<b>2.6%</b>	<b>6.8%</b>	
Ball State University	0.4%	3.8%	4.4%	2.1%	12.7%	18.6%	0.0%	20.8%	0.4%	1.3%	8.7%	1.2%	4.7%	4.8%	7.4%	2.5%	6.0%	0.2%	
U Miss. Main Campus	0.0%	0.0%	3.6%	2.6%	27.0%	15.3%	3.6%	8.7%	5.3%	1.3%	5.0%	1.9%	5.0%	6.2%	4.8%	0.0%	9.9%	0.0%	
U Missouri-St Louis	0.0%	0.0%	2.2%	4.5%	27.0%	19.9%	1.8%	9.0%	0.0%	2.2%	9.3%	1.5%	5.2%	12.5%	4.2%	0.0%	0.0%	0.5%	
U Oregon	1.8%	3.9%	7.1%	5.9%	13.4%	7.0%	0.0%	14.4%	3.5%	2.1%	1.0%	2.2%	6.9%	19.3%	6.8%	0.0%	0.0%	4.8%	
U Memphis	0.0%	0.3%	5.4%	2.8%	19.1%	12.5%	2.8%	12.8%	3.3%	1.8%	7.8%	1.5%	5.2%	5.0%	5.2%	0.6%	4.9%	9.1%	
UNC Greensboro	0.0%	0.0%	8.5%	3.5%	14.6%	16.5%	0.0%	14.5%	0.0%	2.4%	11.1%	0.6%	3.5%	10.9%	2.9%	0.0%	9.6%	1.3%	
Wichita State U	0.4%	0.0%	4.1%	0.8%	18.0%	10.7%	11.9%	12.2%	0.0%	2.0%	12.7%	1.8%	4.7%	8.5%	3.6%	0.0%	8.0%	0.5%	
Old Dominion U	0.0%	0.0%	2.3%	2.5%	15.6%	18.3%	9.4%	10.2%	0.0%	2.4%	15.2%	1.2%	4.5%	9.5%	0.0%	3.6%	1.1%	4.5%	
U Montana	7.4%	0.0%	5.1%	3.8%	16.2%	6.7%	0.0%	11.6%	3.4%	2.4%	8.8%	2.0%	5.0%	14.8%	6.6%	0.8%	5.0%	0.6%	
Portland State U	0.9%	1.6%	3.5%	2.8%	17.9%	10.8%	4.8%	15.4%	0.0%	3.0%	4.5%	1.1%	4.7%	18.0%	2.8%	1.1%	4.0%	3.1%	