

HIGH SCHOOL LUNCH AND RESTAURANT
Pastry and Sandwiches
Special 25c Dinner Daily—11:30 A. M.—7:30 P. M.
9 North Lake Avenue

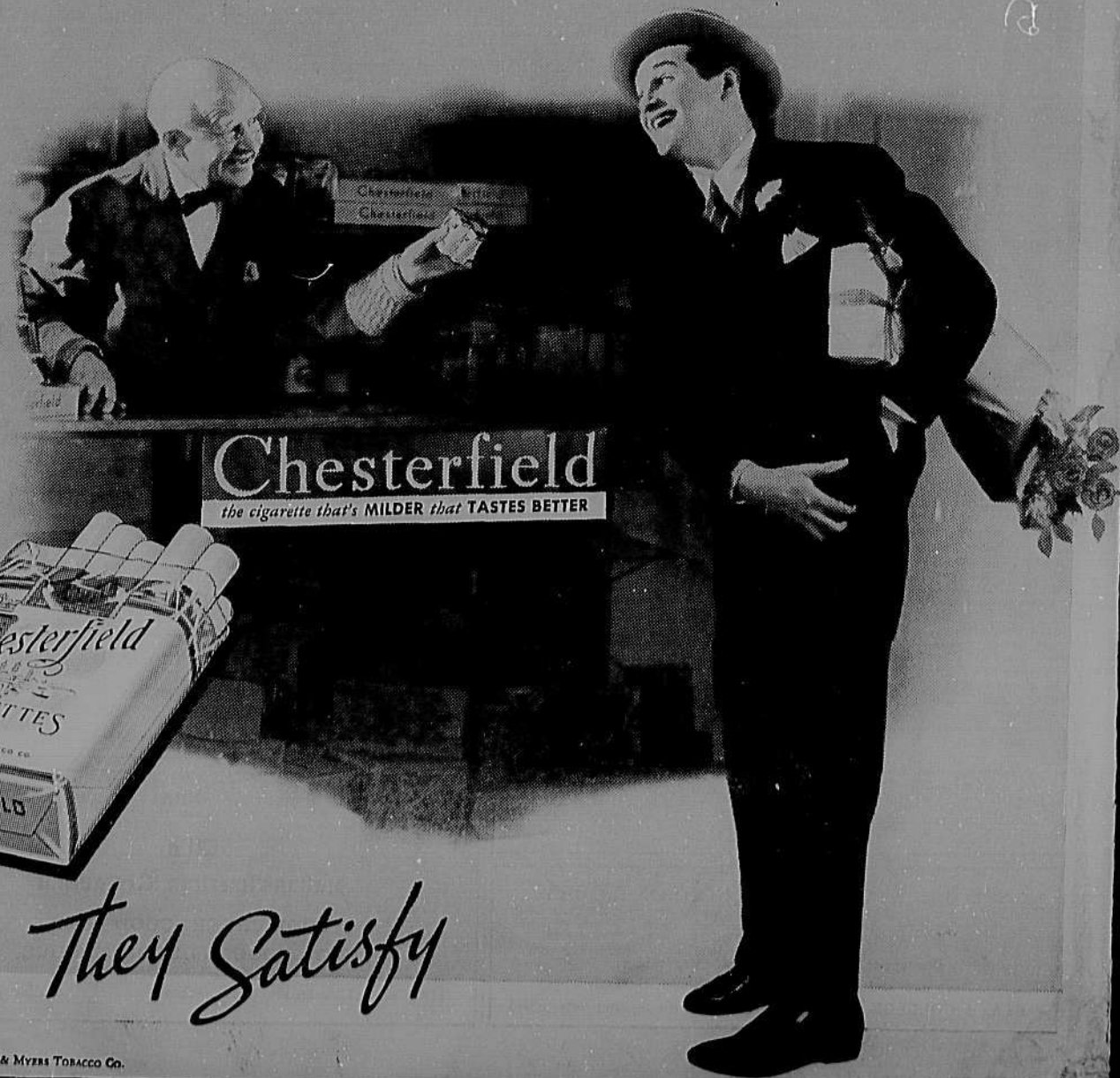
Geo. D. Jeoney, Prop.  Dial 5-1913
" 5-9212

Boulevard Cafeteria
and
Grill

198-200 CENTRAL AVENUE ALBANY, N. Y.

Mike's Barber Shop
Special Attention to College Students
Six Barbers and Attendants
262 Central Avenue At Lake

Wait a minute —
here's what she smokes



Chesterfield
the cigarette that's MILDER that TASTES BETTER

They Satisfy

State College News

Merry Christmas

Happy New Year

VOL. XIX, No. 9

STATE COLLEGE FOR TEACHERS, ALBANY, N. Y., DECEMBER 14, 1934

\$2.25 Per Year. 32 Weekly Issues

President Given LL.D. By Alfred

Dr. Brubacher Addresses Convocation; Receives Honorary Degree At Founders' Day

Announcement to the College student body is made today that Dr. A. R. Brubacher, president of State college since 1914, was the recipient of the degree of Doctor of Laws from Alfred university at the annual Founders' Day exercises conducted at Alfred last Thursday to mark the 98th anniversary of the founding of the university.

Prior to the conferring of the degree, Dr. Brubacher addressed the faculty and students of Alfred, questioning the wisdom of the intensive vocational education programs which have characterized the procedures of American educational institutions since 1900. "Our vocational expertness has gradually made production outrun consumption, leaving us in the midst of plenty which we apparently do not know how to use. That is, we have become skilled in making things but have forgotten how to live the good life. We need to learn how to live rich and abundant lives," the president said.

"Factual knowledge, vocational skill, and scientific method are not alone sufficient," he continued, "but must be supplemented with a new set of ideals. Education in its best conception, consists in forming life ideals,—an honest desire to increase the sum total of human welfare."

The degree was conferred by Dr. Frank P. Graves, commissioner of education of the State of New York. Dr. Brubacher has received the degree of Doctor of Philosophy from Yale university.

RECEIVES DEGREE



Dr. A. R. Brubacher, president, who received the degree of LL.D. from Alfred university last Thursday, and who will present the intersorority scholarship cup in assembly this morning.

Women's Forensic Team Will Meet Syracuse Tonight

The College women's debate team, composed of Lucille Hirsch and Geraldine Huggins, seniors, will meet a Syracuse university team tonight at Syracuse. The State team is upholding the negative side of the question, "Resolved: That the federal government should equalize educational opportunities throughout the United States by granting funds to the states for use in elementary education." On January 10 another women's team not yet chosen will debate at Middlebury. The issue will be: "Resolved: That local public utilities should be municipally owned." The State team will support the negative side of the question.

Newkirk To Play For Fall Dance Of Potter Club

The Edward Eldred Potter club will conduct its annual fall dance tomorrow night in "The Commons" of Hawley Hall, from 9:00 to 1:00 o'clock. Music for dancing will be furnished by Russ Newkirk and his seven-piece orchestra. The dance will be semi-formal.

Edward Kramer, '36, is general chairman of the dance. Committees assisting Kramer are: music, Robert Margison, '37; decorations, Robert Poland, '36; programs, Harry Gumaer, '37; flowers, Glenn Ungerer, '36; refreshments, John Murphy, '37; and faculty, William McGraw, '37.

Alumni members expected to attend are: Arthur Jones and Larry Newcomb, of the class of '31; Samuel Dorrance and Andrew Hritz, of the class of '32, and Gus Askin, Charles Robson, and Thomas Ryan, all of the class of '34.

TO COLLECT FUNDS

The *Pedagogue* will collect subscriptions, \$3.75, on Monday, Tuesday, and Wednesday in Room X, according to Julia Reil, '35, business manager. After Christmas vacation, payments will be collected until January 15. After January 15, the price will be \$4.25.

Chorus To Carol In 11:10 Assembly

100 Students Will Be On Stage; Assembly To Have Revotes For N. S. F. A. Delegate

This morning in the 11:10 student assembly in Page hall auditorium, the student body will be entertained by the annual program of Christmas carols presented by the sections of the College chorus of over 100 students, under the direction of Dr. T. Frederick H. Candlyn, head of the music department. The carols which will be sung are:

"I Saw Three Ships," "Wassail Song," "Patapa," "The Spinning Top," "The Turtle Dove," and "Joyous Christmas Song."

The chorus will occupy the entire stage platform.

Following the singing of the carols, revotes will be taken for the representative to the annual National Student Federation of America Congress at Boston, Mass., December 28 to January 1. The candidates to be voted on this morning are:

Elaine Baird, Paul Bulger and Jayne Buckley. Miss Baird is president of her class, and was vice-president last year. Bulger is vice-president of the student association, and Miss Buckley is secretary of Debate council and was chairman of the Junior Guide committee this year.

Council To Award Scholarship Cup To Pi Alpha Tau

Pi Alpha Tau leads all the campus sororities in scholarship for the year 1934, and consequently will be the recipient of the intersorority council scholarship cup, according to Betty Hartman, '35, president of the council. Dr. A. R. Brubacher, president, will present the cup to the sorority in this morning's student assembly.

Pi Alpha Tau's average is 1.718. Beta Zeta stands in second place with 1.711, which is .07 lower than first place. Last year, Pi Alpha Tau was ninth of the council sororities on the list, and Beta Zeta again held second place. Psi Gamma was first, with an average of 1.63, last year, and this year, with an average .04 higher, or 1.67, has fallen to third.

Kappa Delta, which was third last year, is still near the top, in fifth place; and Eta Phi, which last year was at the end, stands now ninth.

The council sororities and their scholastic standings for the year 1933-34 are as follows:

Pi Alpha Tau	1.718
Beta Zeta	1.711
Psi Gamma	1.67
Alpha Rho	1.58
Kappa Delta	1.55
Alpha Epsilon Phi	1.50
Delta Omega	1.47
Chi Sigma Theta	1.44
Eta Phi	1.41
Phi Delta	1.39
Gamma Kappa Phi	1.30

Y.W.C.A. To Sponsor Weekly Lounge Tea

The Young Women's Christian association will sponsor a Christmas tea to be conducted Tuesday in the Lounge of Richardson hall, from 3:15 to 5:00.

"Y. W." Caroling Will Start Wednesday Morning at 4:30

An itinerant carol service will precede Y. W. C. A.'s Christmas matins next Wednesday morning when boisterous bands and wandering waits leave "Y" House at 4:30 o'clock to carol successively at several group houses and homes of the faculty.

Breakfast at the Boulevard at 7:00 o'clock will be followed by matins in the Lounge of Richardson hall at 8:00 o'clock. Anne Rand, '37, is in charge of the caroling, and Margaret Woodruff, '36, of matins. Everyone is welcome, for either the whole or part of the itinerary. Transportation facilities will be appreciated.

Middlebury Team To Battle State Quintet Tonight

The State varsity five will strive to maintain its victorious stride against a strong Middlebury quintet tonight on the Page hall court. The game is scheduled for 8:15 o'clock.

The invaders from the Granite state have high hopes for a successful season. They recently downed a strong McGill team in impressive fashion and give every evidence of being one of the strongest outfits on the Purple and Gold schedule.

Coach Baker has drilled hard all week ironing out the glaring weaknesses revealed in the Connecticut Teachers contest. The State mentor has not definitely decided on his first team as yet but the starting lineup tonight will probably be the same team that took the floor against Connecticut last Saturday with Baneroft and Murray, forwards, Leonard at the pivot position, and Captain Cliff Rall and Jerry Amyot getting the guard assignments.

WILL HAVE PARTY

Classical club will conduct its annual Christmas party Monday night at 7:30 in room 110 of Draper hall, according to Beatrice Burns, president. All members are urged to be present.

MAY BORROW BOOKS

Students may borrow reserve library books for the period of the Christmas vacation, Mary Elizabeth Cobb, college librarian, announced today. The library will close Wednesday afternoon, December 19, at 5:30 o'clock. Books may be taken out after 5:30 o'clock, Tuesday afternoon.

Dr. William S. French Traces Development Of State College

Some college graduates appreciate their alma mater enough to include a partial history of it in a thesis for the degree of doctor of philosophy. Dr. William French, instructor in education, has such appreciation for the "College of the Empire State."

Dr. French, who graduated from State college in the class of '29, submitted his thesis on "A Century of Development of Teacher Training Institutions in New York State" last June to the Yale graduate school and received his degree of doctor of philosophy. In this he traces the development of State college from the time it was opened on December 18, 1844 as a Normal school, as a normal college in 1890, and as a state college for teachers in 1914. He reveals that State was founded in Albany because Dr. Alonzo

Potter, influential in its establishment, thought it should be near the state capital. For nearly twenty years this was the only school primarily interested in training qualified teachers to work in the elementary and secondary schools of the state. Continuing to show interest in his alma mater, Dr. French has written an article for the Alumni Quarterly to commemorate the ninetieth anniversary of its establishment.

Many professors have extra-curricular interests very different from anything in their careers but Dr. French has always been primarily interested in State college—as a student, a graduate, and a professor. State has been the foundation and pervading interest in his entire educational progress and development.

State College News

Established by the Class of 1918

The Undergraduate Newspaper of New York State College for Teachers

THE NEWS BOARD

Editors-in-Chief

RUTH E. WILLIAMS DAN VAN LEUVAN
680 Madison Avenue, 2-3266 117 South Lake Avenue, 2-4314

Associate Managing Editors

EMMA A. ROGERS KARL D. EBERS
680 Madison Avenue, 2-3266 117 South Lake Avenue, 2-4314
Advertising Manager Finance Manager Circulation Manager
WILLIAM M. DAVIDGE CAROLYN SIMONET MILDRED FACER
3 Sprague Place 21 North Main Avenue, 2-4144 536 Mercer Street, 2-6533

THE NEWS STAFF

Feature Editor Sports Editor
HILDA HEINES FRANK J. HARDMEYER
303 State Street, 4-0002 56 Bertha Street, 3-1806

SENIOR ASSOCIATE EDITORS

Florence Ellen, '35 Ruth Edmunds, '36 Mary Hudson, '36 Glenn Ungerer, '36

JUNIOR ASSOCIATE EDITORS

Helen Smith, '35 Phyllis Boewerth, '36 Aubrey Kalbaugh, '36
Ruth Gillespy, '35 Elsa Calkins, '36 Martha Martin, '36

SOPHOMORE DESK EDITORS

Fred Daxtor Robert Margison Betty Gooding Virginia Stoel Harry Gumaer

REPORTERS

Bessie Hartman, Dorothy Meserve, Genevieve Sennott, Mary Torrens, Hilda Van Alstine, and Edna Wright, seniors; Rosella Agostina, Margaret Bowas, Frances Broom, Loreta Buckley, Virginia Chappell, Hulda Classen, Blodwyn Evans, Jacqueline Evans, Margaret Flanigan, Marie Geosler, Ruth Gillespy, Jeanne Lesnick, Evelyn O'Brien, and Margaret Woodruff, juniors; Alice Barrow, Thomas Iren, Helen Clyde, Janet Conroy, Louise Cunningham, Margaret Domes, Evelyn Hamann, Effrieda Hart, Elizabeth Harr, Eleanor Haselun, Joanne Jacobs, Ethel Keahner, Dorothy Knapp, Lois Kraus, Mary Lam, Frances McVehg, Carol Mires, John Murphy, Mary Plank, Annabelle Reed, Eleanor Samley, Elizabeth Studebaker, Agnos Torrens, and Phyllis Vermilya, sophomores.

ASSISTANT ADVERTISING MANAGERS

Beatrice Burns, '35 Evelyn Hamann, '37

ASSISTANT FINANCE MANAGERS

Mary Cickman, '36 Florence Tate, '36

ASSISTANT CIRCULATION MANAGERS

Edith Garrison, '35 Marjorie Kalaidjian, '36

BUSINESS STAFF

Ruth Hallock, '37 Margaret Walsworth, '35 Laurita Seid, '37

MEMBER

Associated Collegiate Press

1934 Collegiate Digest 1935

Published every Friday in the college year by the Editorial Board representing the Student Association. Subscriptions, \$2.25 per year, single copies, ten cents. Delivered anywhere in the United States. Entered as second class matter at post-office, Albany, N. Y.

The News does not necessarily endorse sentiments expressed in contributions. No communications will be printed unless the writers' names are left with the Editor-in-Chief of the News. Anonymity will be preserved if so desired. The News does not guarantee to print any or all communications.

PRINTED BY FORT ORANGE PRESS, INC., ALBANY, N. Y.

Vol. XIX, No. 9 December 14, 1934 Albany, N. Y.

CONGRATULATIONS, DR. BRUBACHER

Our College president, Dr. A. R. Brubacher, received the degree of Doctor of Laws from Alfred university last week. We as a student body wish to extend our congratulations to Dr. Brubacher. We feel that the conferring of this degree by Dr. Frank P. Graves has brought honor not only to Dr. Brubacher but also to State college, its faculty, and its student body.

It is significant that this honor should be conferred during the celebration of the ninetieth year since the founding of State college. Today State is widely recognized as an institution of high scholastic rating and one which sends forth into the educational fields, teachers with excellent training and background. Dr. Brubacher has guided the affairs of State college through years of great development. The completion of the three buildings, Richardson and Page halls and Milne High school, in 1929, was brought about only through patient and persistent action upon his part. He became president of the College in 1914, the same year the name was changed from State Normal College to New York State College for Teachers. It has been his task to make this transition from a normal college to a college, and he has fulfilled the task creditably. Entrance requirement standards have been raised and are constantly becoming higher, a large extra-class activities program has been encouraged and developed, a summer session has been established and successfully carried on annually, and an excellent faculty has been maintained and more members added since Dr. Brubacher first came to State college.

Grant is his direct personal influence in the educational field, but perhaps even greater is that influence which he exerts indirectly throughout the state through the thousands of well-trained teachers who have been educated in State college and gone out to teach in the secondary schools of the state.

To a man with the highest educational aims, to a teacher of teachers, we extend our congratulations upon the conferring of the degree of Doctor of Laws.

STATE VERSUS MIDDLEBURY

Support your basketball team, be loyal to State, attend the game tonight!

THE STATESMAN

'Tis whispered about that the peculiar customs mentioned last week were not entirely received with open arms . . . seems as if there is always some exception some one must make . . . the Activities office has finally been caged . . . there are just as many people there as ever . . . and in a smaller space . . . wonder what Bush will do now . . . big question of the moment—where are ya gonna spend Tuesday night . . . wherever the best breakfast is served . . . do you know that Jack and Ruth blush when they see each other . . . wonder how Sweet Jane likes the policeman she met the other night . . . where did all the scholarship money go to . . . D. O. is said to accede . . . have you noticed how Jones has lost his woe-begone look in the last two weeks . . . Nelson is gambling around again . . . a certain fireman has been complaining of slow progress . . . but, sir, you need heat for progress . . . the girls are clamoring for a Stateswoman . . . just call the rat in Chi Sig's cellar Oscar the next time you go down . . . will Atwell never stay put . . . the boys sure would like to watch Shalhen do his handstands if there weren't other things . . . not so many outsiders at the game as was expected . . . but, Coach, won't you give us some good music to dance to . . . do you know the administration is in debt to one of the students . . . wonder how Ouellette felt at the Chi Sig tea . . . Sigma Alpha has no house rules, it seems . . . how sorority rushing rules are being violated . . . no one dares say anything 'cause it would be "You tell on me, I tell on you" . . . that's about all for this year . . . see you next year . . . if I'm awake Wednesday, say good-bye to me.

PLAYGOER

After seeing the plays last Tuesday night, again we wonder if the directors are not ignoring stage sets and concentrating only upon stage business. The set for the first play was inadequate (—a beautiful painting in an ugly room). The set for the second was nonexistent. What might have been done for both plays were a definite atmosphere created by the sets can only be imagined, but we feel that the plays could have reached heights unattained by this year's presentations. May we praise the lights in the first play; also the theory employed in the second play (although it was only partly successful), which, by the way, had more time been spent in an effective and practical employment of this theory, might have compensated for the lack of set. Sir Harry and Kate were too conscious of their movements and so detracted much from the effectiveness of the business in the first play. Miss Stone had an excellent accent, but her tenseness transformed the listless character of Lady Sims into one approximating spirit, and submission to her husband into condescension. Miss Peterson and Mr. MacNamee gave good characterizations, but they lacked a sense of comedy that obliterated much of the author's humor. It is rare that an actor of State college can inspire the full confidence of the audience, but Mr. Norton accomplished it by his ease and proficiency. Miss Hirsh was good throughout the play, but only in the denouement did we feel the precise ability which she possesses; and we suspect it was not because of lack of opportunity. Miss Studebaker was spontaneous but ineffectively youthful.

BOOKS: The Cross vs. the Crescent; Love and Life

—K.D.E.— —R.E.W.—

"A Historical Narrative of Asia Minor"

(For Sale in the Co-op)
The Forty Days of Musa Dagh, by Franz Werfel. Viking Press, New York. 377 pages. \$2.50.

The Forty Days of Musa Dagh brings back a forgotten chapter in Turkish-Armenian history during the World War. Werfel uses this background for his historical narrative, interweaving fiction and fact.

Gabriel Bargradian, an Armenian, educated and brought up in Paris and surrounded with wealth, is forced to return to Istanbul on the death of his brother, to take charge of the home office of his business. Bargradian settled with his wife and son at the family villa at Yoghonoluk in the shadow of Musa Dagh, at that time a refuge from the war.

Slowly, the ancient world closes in on Bargradian and he feels himself more and more a member of that minority race. And when Enver Pasha, young commander of Turkey, ordered all Armenia to be exterminated, it was Bargradian who suggested armed resistance regardless of their small number. At the head of five thousand Armenians, he marches to the mountain fastness of Musa Dagh, there to defy the Ottoman Pasha. The struggles, hardships, and heroism of this little band to preserve their lives, heritage, and Christian faith is recounted vividly by Werfel in this his latest book.

TO COLLECT TAX

Members of the student board of finance will conduct a table for tax collection in the rotunda of Draper hall from 9:00 to 2:30 o'clock today, and on Monday, Tuesday, and Wednesday from 9:00 to 3:15 o'clock.

"The Sea's Claim on Life and Love"

(For Sale in the Co-op)
Mary Peters, by Mary Ellen Chase. The Macmillan Company, New York. 377 pages. \$2.50.

Mary Peters could not help but love the sea since it was the only home that she knew for fourteen years. She was born on board a ship, and this ship was her home until she was old enough to enter the academy. How different she was from her brother, John, who loved the land and greatly disliked the life on the seas. Mary was tutored by her mother and followed a regular schedule of study on shipboard until a young Harvard student became mate on the ship. He soon became her idol and tutor.

Disasters at sea must be met with calmness, and Mary appeared to become a true sailor in this respect. Although the sea claimed both her father and tutor, she held no bitterness toward it.

On land, Mary settled down with her mother and John. Mary was guided through many trying experiences by a mother with an exceptionally tolerant view point toward many matters for a person living in the early 1900's. When Mary loved, she loved with the deepest of feelings. To such love she was ever true. We must admire her, yet pity her, too, for her loyalty to Jim Pendleton. The sea of matrimony proved rough for Mary, but, true sailor that she was, she guided her course through it to the tragic end of Jim's life.

Miss Chase has portrayed a story of sea life so vividly and so humanly, that it captivates and holds our interest until we reach the end and find that Mary Peters has gained at least a small portion of the happiness that is due her.

State Vanquishes Connecticut 47-16

State Quintet's Offensive Playing Is Feature of First Game of 1934-5 Season

An enthusiastic display of rugged individualism led by sharpshooting Bob Murray brought State a one-sided victory over an extremely weak Connecticut Teacher's team. The Purple and Gold cagers fattened their scoring averages considerably at the expense of the feeble visitors, with Murray's 17 points leading the onslaught. The floorwork of Captain Cliff Rall and Jerry Amyot, plus the uncanny accuracy of Murray's cut-shots provided what thrills there were in an unusually dull game. Grasso's 7 points were high for Connecticut.

Connecticut leaped into a 4-0 lead in the first few minutes. Success evidently turned their heads, for from then on they spent most of the evening watching State players try shots.

After this opening uprising had petered out, State never was threatened. Coach Baker substituted freely; every combination he put on the floor piled up points at will against the invaders. At half-time State had built up a 20-10 lead which they increased constantly throughout the second half.

Score:

Player	ft	Score	fp
Baneroff, lf	2	3	16
Murray, rf	8	17	2
Leonard, c	1	0	0
Welter, c	2	1	5
Kane, c	2	3	7
Rall, rg	3	2	8
Amyot, lg	1	0	2
Byrnes, lg	0	0	0
Pember, rg	1	0	0
Total	19	9	47

CONNECTICUT STATE

Player	ft	Score	fp
Vladis, rf	2	0	4
Burtian, lf	0	0	0
Derent, lf	1	0	0
Hattings, lf	0	0	0
Kaczynski, c	0	0	0
Gladstone, c	0	1	1
Geissler, c	1	0	2
Tolain, rg	2	3	7
Grasso, lg	0	0	0
Total	6	4	10

Newman Christmas Party Will Include Carols, Yule Log

Newman club will conduct a Christmas party Monday night, at 8:30 o'clock, at Newman hall, according to Loreta Buckley, '36, general chairman. Christmas carols, the Yule log fire, and dancing will be features of the evening.

The following committees have been appointed: arrangements, Ada Knuappel, '37, chairman, Jeanne La Roque, Gertrude Tolnitch, juniors, Annabelle Keery, Dorothy Laurenz, sophomores; refreshments, Berenice Monnat, '37, chairman, Dorothy Walker, '36, Dorothy Cain and Florence Nelbach, freshmen; clean-up, Betty Cashin, '38, chairman.

Sorority Conducts Christmas Seal Campaign In College

"500 seals!" Do you know what that means? It is the slogan of Alpha Epsilon Phi in its drive to aid in the fight against tuberculosis.

The sorority members have again set up their table in front of the cafeteria annex, and the annual sale is once more under way. Their goal this year is the sale of 500 Christmas seals, proceeds of which are to go to help maintain tuberculosis sanitariums.

Patronize home industry! Buy your seals this year from your classmates! The drive will be continued until Christmas recess. Help them reach their goal!

SPORT SHOTS

Er-er, ahem! First prediction slightly off! We're happy to announce that we were mistaken. However, pessimism still guides the pen of your humble servant. To wit—Middlebury 28, State 23 for this week.

The scheduled basketball game with Connecticut Teachers developed into an informal track meet. We firmly believe that the business managers of the News, Echo, Lion, Ped., etc. could trounce Connecticut by at least 10 points.

Coach Perry Mundy's arm-twisters journey to North Adams this week-end for their baptism of fire in the wrestling world. The survivors should have an interesting tale to tell next Monday.

The Interclass Basketball league rolled merrily on its way with the seniors nosing out the grads and the sophomores eking out a 34 to 1 victory over the cream of 1938. A smashing last quarter counter-attack brought the Frosh to victory. Some sophomores must have slipped up.

Lutheran Club's Group Discussion To Be January 10

The next meeting of Lutheran club will be Thursday, January 10, at 5:30 o'clock in the Friendship house. Alice Kemp, '37, and John Schonenberg, '38, will be in charge of the supper. Ruth Wright, graduate student, will lead the discussion meeting on "The Christian student's social activities." This is a vital topic and should interest many. Everyone is welcome.

Plans are being made for a subregional meeting in Albany on January 13 of all Lutheran clubs of the various colleges in this section of New York state. These colleges include Hartwick college, Oneonta, Skidmore college, Saratoga Springs; Union college, Schenectady; Russell Sage, Troy; and State college. The purpose of this gathering is to arouse enthusiasm for the North Atlantic Regional conference of the Lutheran Student association which will convene at Philadelphia February 21-24, Helen Smith, '35, is general chairman of the sub-regional meeting.

Dean Moreland Has Third Freshman Tea

Thirty-three freshmen women yesterday attended the third tea which Miss Helen H. Moreland, dean of women, has conducted for freshmen this year at her home at 311 Western Avenue. Miss Laura Thompson, manager of the College cafeteria, and Miss Elizabeth Van Denburgh, registrar, assisted Dean Moreland in pouring.

Freshmen who attended were: Irma Anderson, Lucinda Ashley, Marion Ball, Betty Barsaloux, Helen Benway, Charlotte Bradshaw, Marion Burns, Josephine Cypher, Esther Fraats, Marjorie Jobson, Phyllis Jobson, Mildred Katz, Mildred Kornmeyer, Elinor Lichtel, Doris Munroe, Helen Olski, Theresa Palmer, Mary Ann Pomponio, Kathryn Recktenwald, Lillian Ruslmeyer, Vivian Salisbury, Anne Sarcone, Adelaide Schmid, Elizabeth Smith, Mary Elizabeth Smith, Margaret Takacs, Ruth Thompson, Virginia Travis, Barbara Van Patten, Evelyn Vosburgh, Margaret Winn, Sophie Wolzak, and Bertha Wood.

English Department To Have New Class

Miss Agnes Futterer will conduct a new course in play-writing during the second semester. Its aim will be to have students write plays to be presented by the advanced dramatics class. Only those people who have submitted to Miss Futterer some sort of worthy dramatic writing will be admitted. It is also advisable to have completed English 8 before entering the new course in play-writing.

The class will be conducted in Miss Futterer's office on the third floor of Richardson hall. The time is to be announced.

WELCOMES MEMBERS

Beta Zeta sorority recently welcomed Dr. Ralph G. Clausen, instructor in biology, Mrs. Clausen, an alumna of the sorority, and Miss Margaret Jager, instructor in English, into honorary membership.

"Echo" Completes Fencing Program In Activities Room

And now the Echo has it—a neat fence enclosing a few square feet at the extreme right rear of the Activities office. Norbert F. Huber, '36, the business manager of the publication, said that the Echo desk, especially the drawers, were slowly but surely losing their identity as such. Thus necessity became, in a mild way, "the mother of invention." The telephone booth has been moved so as to be as accessible as heretofore.

TALKS ON SAAR TOPIC

Mr. Ralph H. Baker, instructor in government, spoke on the Saar question at a meeting of Pi Gamma Mu, national honorary social science fraternity, Wednesday night at the home of Professor Clarence Hildley. Mr. Baker pointed out the importance of the Saar question to present-day world trends in government.

Geo. D. Jeoney, Prop.  Dial 5-1913
" 5-9212

Boulevard Cafeteria and Grill

198-200 CENTRAL AVENUE ALBANY, N. Y.

For Students and Faculty Rail Fares Reduced 1/3

The railroads appreciate the enthusiastic responses of students and faculty to the "College Special" fares which combine economy with the great advantages of rail travel—safety, speed, comfort and convenience.

If you bought one of the reduced fare round-trip tickets when you came to school this Fall, the coupon is good returning home between December 10 and 25. When coming back after the Holiday, be sure to take advantage of this one and one-third fare ticket, the purchase date for which has been extended to January 16. Diagram below shows going and return dates.

GOING TO SCHOOL	RETURNING FROM SCHOOL		
	Return portion of ticket may be used to Home Station during any one of the periods named below:		
Round-trip ticket may be purchased at Home Station during any one of the periods named below:	Christmas 1934	Spring 1935	Close 1935
Dec. 25, 1934-Jan. 16, 1935	Dec. 10-25	Mar. 9-Apr. 20	May 15-June 30
Mar. 15-Apr. 23, 1935	Mar. 9-Apr. 20	May 15-June 30

Going trip must begin on date ticket is purchased—limited to reach school station within ten days. Return trip must begin on date of validation of ticket by railroad agent at school station—limited to reach home station within ten days. Tickets good over same route both ways. Stop-overs will be allowed in each direction. Tickets good in coaches, also in Pullman cars, upon payment of regular Pullman charges. Baggage will be checked under the usual regulations. No certificate or other form of identification necessary.

TRAVEL BY TRAIN

Assuring your comfort with speed
Your convenience with safety.

CENTRAL PASSENGER AND TRUNK LINE ASSOCIATION RAILROADS

First State Normal School Marks Ninetieth Anniversary December 18

Tuesday, December 18, marks the ninety-ninth anniversary of the New York State College for Teachers, which was founded as the State Normal School in 1844. It was the first normal school in the state and the fourth in the United States.

On May 7, 1844, the New York State legislature passed an Act for the establishment of a state normal school in the county of Albany, following the suggestion which Governor DeWitt Clinton had made in 1826 in his annual message to the legislature of the state. The same Act provided for the appropriation of money necessary for its support and placed the entire supervision of the school in the hands of the superintendent of common schools and the Regents of the University.

Through the Honorable Gideon Hawley, a member of the organization committee, the Mohawk and Hudson railroad depot was secured for the college building at the corner of Maiden Lane and State street which in those days intersected just below the present State Capitol. The building which occupies that site now is known as Van Vechten hall.

Following the committee's agreement that there should be no charge for tuition, that books should be furnished to students free, that male pupils should receive one dollar a week, and female students one dollar and twenty-five cents a week to help pay their room rent, the legislature passed such an Act. Consequently on December 18, 1844, the school opened for the first term "under most favorable conditions." Mr. David Perkins Page was appointed first principal and served with distinction until his death in 1849. Thus ended the first stage of the history of the state normal school.

During the early history, the enrollment of the school was restricted to two students from each assembly district. The first class which graduated in August 1845 numbered 34. All of the graduates in this class had some teaching experience, ranging from one-half to forty-seven years.

From 1849 on, the problem was one of building, facilities, curriculum, and name. An additional College building was erected at the cost of \$25,000, to be the first building of its own. From 1848 to 1889, the events of importance were the changes that occurred in the principal's office.

The recruiting of students for the Civil war was begun in 1862. A total number of 179 students entered and served in the war, four joining the Confederate army. A tablet in memory of the normal school students who gave their lives during the Civil war has been placed in the rotunda of Draper hall.

In 1882, Dr. Edward P. Waterbury, who succeeded Dr. Joseph Alden as administrator, was instrumental in securing a new site for the erection of the school, after the old building was deemed unsafe for habitation. Dr. William J. Milne succeeded Dr. Waterbury in 1889.

When the new building located on Willett street opposite Washington park was opened in 1890, a new charter was granted. It accorded permission to grant pedagogical degrees, such as: Bachelor, Master, and Doctor of Pedagogy. Thus the scope and purpose of the College was enlarged. The entrance requirements were broadened and the name was changed to State Normal College. In 1890 a semi-centennial jubilee was celebrated by graduates from all over the country.

The establishing at State of Greek letter sororities, clubs, and successful financing of publications are partly indebted to the aid of Dr. Milne. He also reorganized the practice school, adding a high school department.

In the year 1905, two fires broke out in the school within six months of each other. The first occurred on January 8, the buildings being burned to total destruction. In this fire a \$5,500 alumni window in the auditorium was demolished. Six months later, another fire broke out in the basement of another building doing considerable damage.

Shortly after this, the present site was purchased and these buildings were ready for occupancy by 1906. Draper hall, Husted hall, and Hawley hall auditorium and gymnasium were erected.

In 1914, Dr. Milne died and was succeeded by Dr. A. R. Brubacher as president. The Board of Regents voted to change the name of the college to New York State College for Teachers on April 10, 1914. Since 1917, when summer sessions were established and successfully operated, they have been continued.

In 1928, the second group of buildings, Richardson, Page and Milne halls were completed and opened for use in September 1929. The erecting of the women's dormitory on a site between Ontario and Partridge streets and Western and Washington avenues is in progress at present, to be ready for occupancy in September 1935.

State college has grown four-fold since its foundation necessitating a limited enrollment and a raising of entrance requirements.

Freshmen To Open Basketball Season With College House

The freshman basketball team will open its season tonight against College House in the preliminary game in Page hall gymnasium.

The squad, coached by George Bancroft, '36, has been intensively drilled since the basketball men were called out. The freshmen were to have opened their season Saturday at Amsterdam but the conflict with the varsity game necessitated its cancellation.

The men composing the yearling team and who will probably see action tonight are: Neal Kane, John O'Brien, Frank Hildebrandt, Lyle Lawton, Paul Schmitz, John Masko, and Peter Rodenrys.

The tentative schedule as announced by Edward Reynolds, manager, is:

January	11 Stratford
	31 Peru
February	1 Lyon Mountain
	2 Danmora
	15 Mechanville
	21 Mt. Pleasant
	23 Milne High School
March	8 Sophomores

Club Will Conduct Party For Children

Canterbury club will conduct its annual Christmas party for the children at Trinity institute on Tuesday, in accordance with an annual custom.

Committees for the party include: refreshments, Marion Walker, '35, Marjorie Kelley, '37, and Kathryn Carlson, '38; gifts, Irma Donnan, '35, Marion Caborn, '38, and Elsie Pugsley, '35; entertainment, Ida Jane Hammond, '37, Ruth Ramee, '38, and Isabel Dav' Jge, '37.

RECEIVES POSITION

Marion Pike, '34, has withdrawn from College to accept a position teaching junior high school subjects in the Central School at Washingtonville.

As Reliable as Ever
**SUPERIOR
SHOE REBUILDERS**
Ask Your Senior Classmates
About Us
204 Central Ave. Dial 4-6015

HIGH SCHOOL LUNCH AND RESTAURANT
Pastry and Sandwiches
Special 25c Dinner Daily—11:30 A. M.—7:30 P. M.
9 North Lake Avenue



HOME, JAMES! For Christmas Holidays

Congratulations, students! You need no longer fear that your cellmate — in an unguarded moment — will pawn your extra pair of pants or hock your jewelry to raise the fare necessary to go home Christmas. Greyhound's excursion rates eliminate that danger.

This Christmas you can make the trip home in a modern, comfortably-heated coach, piloted by one of the finest drivers on American highways. Join in the good fellowship aboard, or recline your deeply cushioned chair to the most comfortable angle and let the miles roll by unheeded. Greyhound's frequent schedules enable you to leave almost as soon as your last class is over — and stay until the last possible moment before you return.

FARES REDUCED

1 1/2 TIMES THE
ONE-WAY
FARE FOR
ROUND TRIP

DEC. 14 — JAN. 1
RETURN LIMIT JAN. 13

Effective to hundreds of places — not good to New York — certain other cities.

Eastern Greyhound Terminal
350 Broadway
Phones: 4-6165 and 4-6166

GREYHOUND
Lines

Eye Glasses



Prescription
OPTICIANS.
N.P. FREDETTE
61 Columbia St. 1st door above Pearl
COMPLETE OPTICAL SERVICE

McMANUS & RILEY

CORRECT ATTIRE FOR GENTLEMEN AND BOYS

Albany, N. Y.

49-51 State Street

SPECIAL STUDENTS' LUNCHEON TODAY

(and every day)

20c.

Scalloped Oysters; Potatoes; Vegetables;

Beverage and Roll Also: Salads, Soups, Desserts

STATE COLLEGE CAFETERIA (a non-profit making enterprise)

Collegiate Digest

SECTION

"National Collegiate News in Picture and Paragraph"

U. S. TRADEMARK SERIAL NUMBER 31412



SKYLINE QUEEN » Lillian Colwell is the most popular girl at Colorado Woman's College (Denver). KEYSTONE



POLAND HONORS DARTMOUTH PROFESSOR » Prof. Eric P. Kelly (left), Dartmouth College (Hanover, N. H.), receives a decoration in recognition of his writings on Polish history from Polish Ambassador Stanislaw Patek. KEYSTONE PHOTO



BATTER UPI » Frederick Frick, son of National League president, is a DePauw University (Greencastle, Ind.) student. KEYSTONE PHOTO



CAMPUS BOSS » Hudson Moore is the leader of the non-fraternity men at the University of Georgia (Athens), and he sees to it that they get their share of extra-curricular activities.



NINE BEAUTIES » They've been chosen the most beautiful of all the women attending Capital University (Columbus, O.), and they'll be the queens of the campus for the remainder of the school year.



QUEEN OF THE FROSH » Ruth Clay has just been elected queen of the University of Arkansas (Fayetteville) first-year class, and she'll rule over their activities for the rest of the year.



ADOPTING FRESHMEN is quite an affair at Texas State College for Women (Denton), and here are a group of the "adopters" gathered around the campfire for the traditional Indian ceremonies.



QUEEN AND ATTENDANTS » Mary McGuire (left) reigned as Homecoming Queen at Drake University (Des Moines, Ia.), while Kea Rea, Josephine Peterson and Elizabeth Fields acted as her assistants.



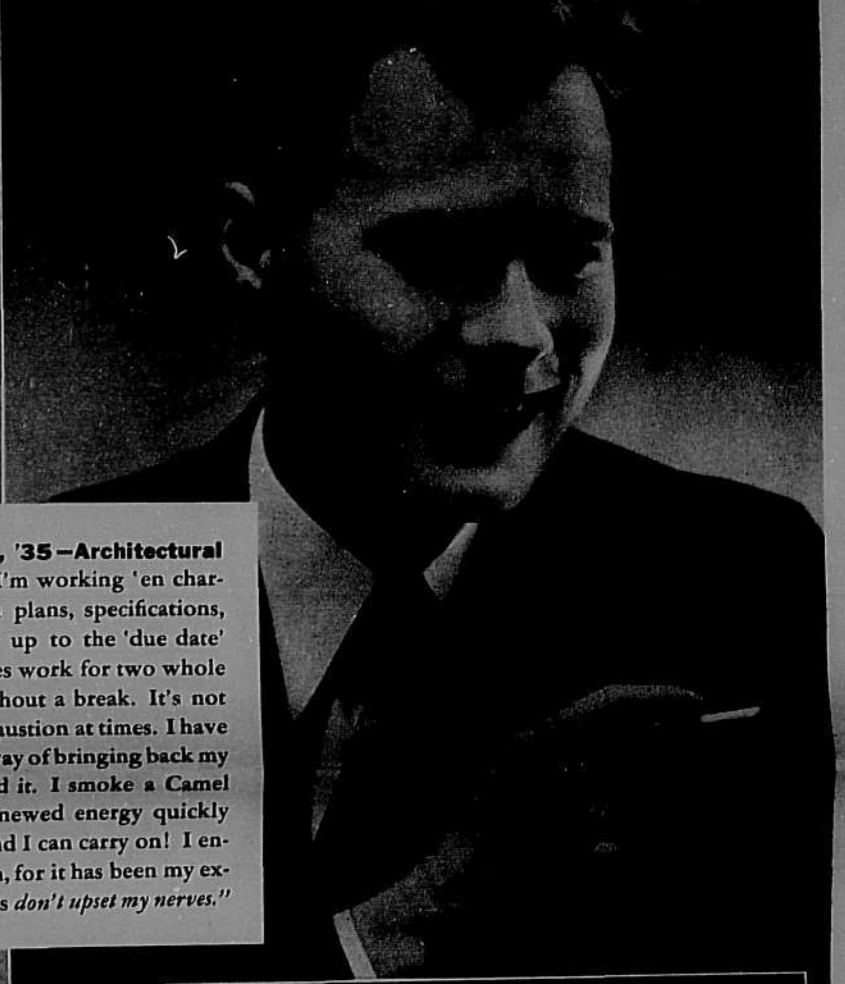
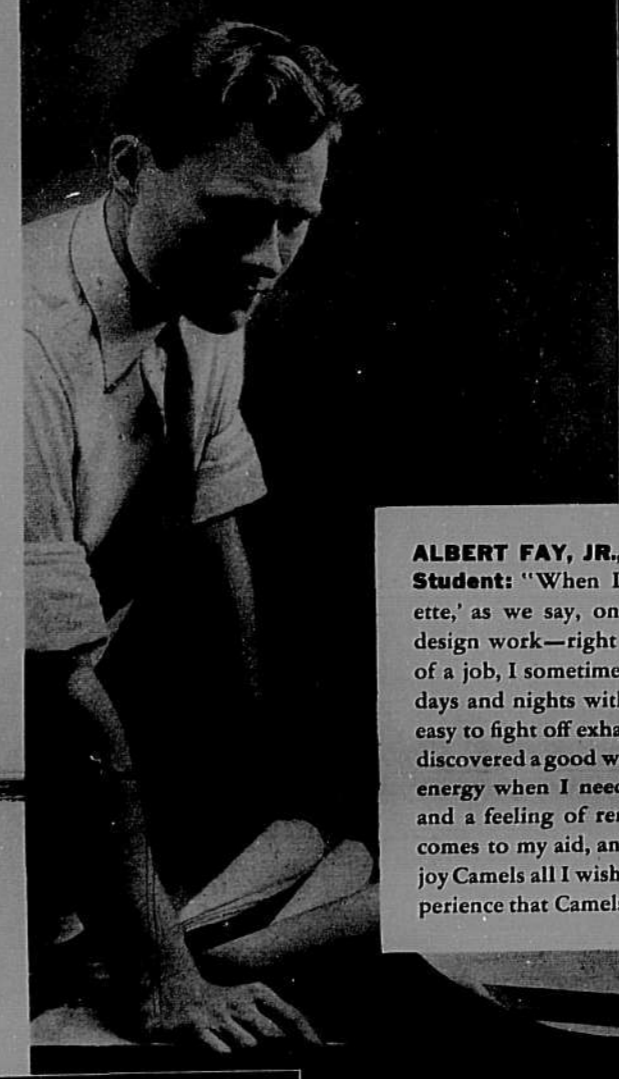
Cheering 'Em On

1. **BUD KINNEY**, University of Toledo (Ohio) head cheerleader, gets disgusted with lack of cheering enthusiasm. 2. **HUEY AND THE LADIES** cheer the election of student Abe Mickals, of Louisiana State University, to the state senate. 3. **JOE E. BROWN** gets a workout with the University of Toledo gridmen, and takes a few lessons from a snappy baton welder. 4. **THE ACROBATIC CHEER LEADERS** of Dartmouth College (Hanover, N. H.) lead a sizzling skyrocket. 5. **CO-ED CHEERLEADERS** lead the yells at Syracuse University (N. Y.). 6. **FLIP-FLOPS** help bring out the cheers at Purdue University (Lafayette, Ind.) grid battles.

U. T. P. S. PHOTO

WHEN TIRED OR TROUBLED...

GET A LIFT WITH A CAMEL!



ALBERT FAY, JR., '35—Architectural Student: "When I'm working 'en charrette,' as we say, on plans, specifications, design work—right up to the 'due date' of a job, I sometimes work for two whole days and nights without a break. It's not easy to fight off exhaustion at times. I have discovered a good way of bringing back my energy when I need it. I smoke a Camel and a feeling of renewed energy quickly comes to my aid, and I can carry on! I enjoy Camels all I wish, for it has been my experience that Camels *don't* upset my nerves."

NOTED GIRL EXPLORER. Mrs. William LaVarre says: "When I am tired, I just stop and smoke a Camel... It wakes up my energy in no time. And here is an important point—smoking Camels steadily does not affect one's nerves."



TRANSPORT PILOT. "When I notice that 'all in' feeling," says Maurice Marrs of the United Air Lines, "I pull out a Camel, light up, and the tiredness is quickly relieved. I smoke them steadily...and never know that I have nerves."



TOBACCO EXPERTS ALL SAY:

"Camels are made from finer, more expensive tobaccos—Turkish and Domestic—than any other popular brand."



JOIN THE NEW CAMEL CARAVAN



Annette Hanshaw

with **ANNETTE HANSHAW**

WALTER O'KEEFE TED HUSING

GLEN GRAY'S CASA LOMA ORCHESTRA

TUESDAY

10:00 P.M. E.S.T.
9:00 P.M. C.S.T.
8:00 P.M. M.S.T.
7:00 P.M. P.S.T.

THURSDAY

9:00 P.M. E.S.T.
8:00 P.M. C.S.T.
7:30 P.M. M.S.T.
8:30 P.M. P.S.T.

OVER COAST-TO-COAST
WABC-COLUMBIA NETWORK

CAMEL'S COSTLIER TOBACCOS NEVER GET ON YOUR NERVES!

Copyright, 1934, H. J. Heynolds Tobacco Company

>>



<<

Leading the Fashion Parade

The shirtwaist dress in checked velveteen is a perfect campus costume—especially under a nutria or beaver coat such as worn by the young lady shown at the left. The smart hat with a turned up brim completes the outfit. The exhibit of what the well-dressed co-ed at Washington University (St. Louis, Mo.) featured in the center comprises the nine women chosen as the best-dressed on the Bears' campus. Miss Flor-

ence Kay (at right) was selected by the committee of artists and writers as the best-dressed of the best-dressed. She is shown wearing a two-piece sport outfit with a brown skirt and vintage-green blouse. **INFORMATION** on what the well-dressed co-ed should wear will be sent upon request by the New York fashion editors of Collegiate Digest. Address correspondence to: Fashion Editor, Collegiate Digest, P. O. Box 472, Madison, Wis.

COURTESY BUTTERICK PATTERNS & KEYSTONE PHOTO

News Item

By
Jeanne Ross '33
Chi Omega
Indiana University

"Hello, Atkins."
"Good afternoon, Mr. Wood," said Atkins, taking the master's hat and coat.
"Hello, Mary, have a good bridge game?"
"Dreadful."
"Could I talk to you a minute, dear?"
"Please wait, Roger. You know contract always gives me a beastly headache."
"But --"
Mary went on upstairs to her room.

The telephone rang. It was Gerald calling to say he was staying at the club for dinner.
Roger went to the radio, but no sooner did he have vague promises of a good station, than the door opened and in burst Rosalie with a crew of friends.

"Just came from the game, Dad, and we won. See how State's doing, Jerry. You have money on that game, too, don't you?"

And Jerry turned the dials till he got a blustering account of a game somewhere farther north.

Roger retired to the library. From the din in the adjoining room one might have guessed that the game itself was no more distant than the radio. Hearing the front door open and close, he looked out in the hall questioning—ah, the mob gone, now he could see Rosalie. Atkins returned from closing the front door to say that Miss Rosalie had gone on a house party for the weekend.

"All right, Atkins, Buddy won't be home, either. Mrs. Wood and I will dine alone."
"I beg pardon, sir, but Mrs. Wood had some milk toast in her room and has asked not to be disturbed. Shall I serve you in the dining room?"

"It doesn't matter, Atkins, never mind. Guess I'll go to the club to eat tonight."

Returning from the club he asked Atkins to order extra copies of the morning paper and to put one in the room of each member of the family.

He had hopes that at a late breakfast he would see some of his wandering family, but his hopes were futile.

"Atkins, I have something to tell which I cannot keep any longer. Will you listen to me? Yesterday I learned that I have inherited my Uncle Jacob's..."

Atkins pardoned himself to answer the telephone.

"It's Miss Rosalie, sir. She says to tell you she's coming right home and wants to know why you didn't tell her anything about it."

Dignified Gerald slid down the banister, followed by bathrobed and frowled Buddy.

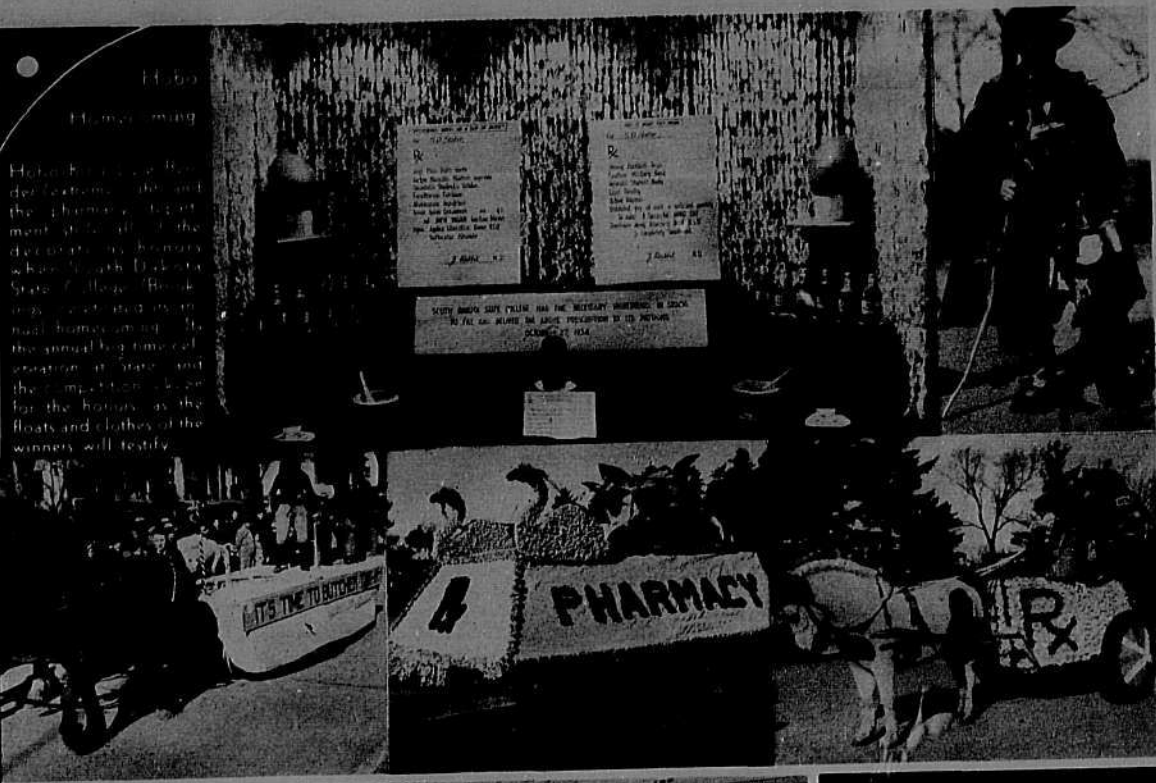
"Why didn't you let us in on it, Dad?"

"Good morning, dear. Why didn't you tell me? I have to read the newspapers to learn anything about my own husband."

"I ask you dear, is that fair?"

"But why so secretive about a gold mine in Alaska? Dear, you know I always listen to you."

COLLEGIATE DIGEST Section is looking for Short Short stories. Manuscripts must be accompanied by return postage. Payment at regular rates upon acceptance. Address: Story Editor, COLLEGIATE DIGEST Section, P. O. Box 472, Madison, Wis.



YES, SIR! THEY EVEN HAD HORNED DINOSAURS • And these four monster skulls being exhibited by Preparator Fred Darby, of the Yale University (New Haven, Conn.) Peabody Museum, prove it. The four skulls show how evolution revised the dinosaur "moled" sixty million years ago in America.

PRESENT AMERICAN PREMIERE • Westminster College (New Wilmington, Pa.) dramatists gave the first U. S. performances of "The Theatre of the Soul."

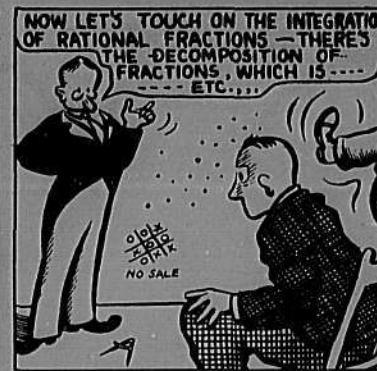
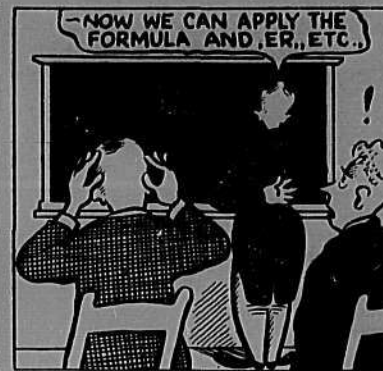
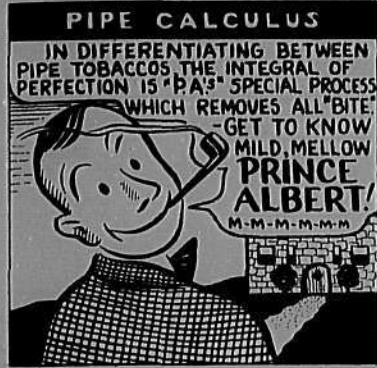
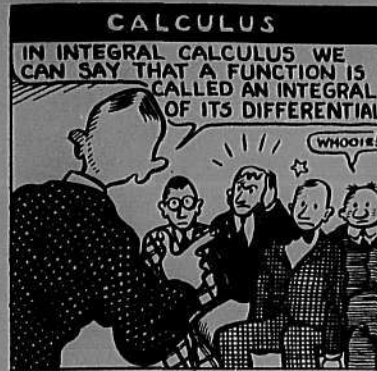
YESTERDAY AND TODAY



They may have called it "Moonlight and Stars" when the Rockford College (Illinois) presented the production pictured on the left back in 1913, but the 1934 interpretative dancing class believes that it should be done with more



grace and with appropriate draped backgrounds. This panel in our series of exclusive Yesterday and Today pictures should probably have been titled from the Light Fantastic to the Interpretative Modernistic.

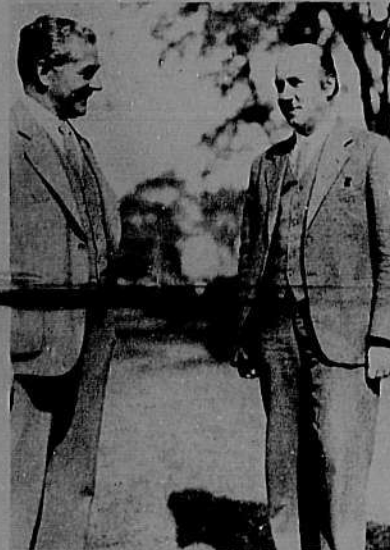


AMERICA'S FAVORITE PIPE TOBACCO !!

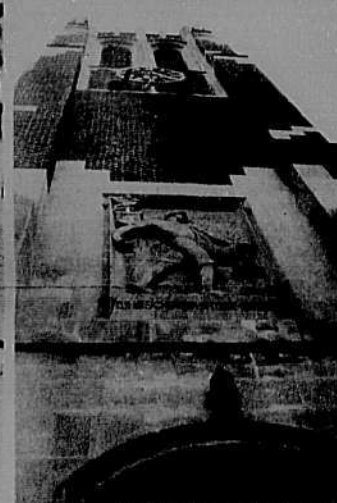
- ✓ SPECIAL PROCESS REMOVES THE BITE
- ✓ MILD CRIMP CUT
- ✓ A SECRET-RECIPE TOBACCO
- ✓ LONG BURNING
- ✓ 2 OUNCES IN EVERY TIN
- ✓ LARGEST-SELLING SMOKING TOBACCO IN THE WORLD!

PRINCE ALBERT
THE NATIONAL JOY SMOKE!

2 OUNCES



SIKORSKI JOINS FACULTY • Raymond G. Bressler (left), president of Rhode Island State College (Kingston), welcomes the famed aviation designer to the campus.

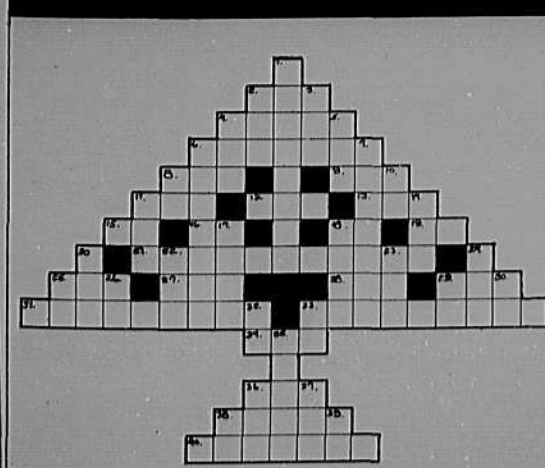


VICTORY CHIMES • The chimes in Beaumont Tower are rung only in celebration of a Michigan State College (East Lansing) athletic victory. The four clock faces on the tower are visible from every corner of the campus.



PRESIDENTS MEET • James B. Conant, of Harvard University (Cambridge, Mass.), confers with Paul D. Moody, of Middlebury College (Vt.).

CROSSWORD PUZZLE



- Horizontal**
2. Begin to grow.
 4. Intrepidly.
 6. Delicately cut.
 8. Mistle . . .
 9. Christmas spirit.
 11. A term of respect.
 12. To mingle.
 13. The cry of a cat.
 15. "The Cracker State" (Abbr.).
 16. Each (Abbr.).
 18. Township (Abbr.).
 19. Alternating current.
 21. These make a good sauce for a Christmas dinner.
 22. The atmosphere.
 27. Vase.
 28. The month of Hallow'en (Abbr.).
 29. Total.
 31. The festival celebrating the birth of Christ.
 33. We hang these up for Santa on Christmas Eve.
 34. Articles.
 36. . . . Saint Nick.
 38. Ideal Christmas weather.
 40. We all look for one under the Christmas tree.
- Vertical**
1. The season at the end of the year.
 2. To bear.
 3. The family physician.
 4. To contend.
 5. Carpet.
 6. The lower part of the arm.
 7. Mexican city on the Gulf of Mexico.
 8. Note of the scale.
 10. You.
 11. Bag.
 14. Part tense of "to be".
 17. Girl's name.
 18. A jogging pace.
 20. The Christmas tree.
 22. Wheel track.
 23. And so forth.
 24. Mirth.
 25. Exclamation of joy.
 26. The state called "Little Rhody" (Abbr.).
 29. Symbol for silicon.
 30. Symbol for magnesium.
 32. Street (Abbr.).
 33. Compass point.
 35. Rings of light.
 36. Individual.
 37. Female sheep.
 38. Senior (Abbr.).
 39. Then (contraction).

Last Week's Puzzle



Report Card
By Prof. Metro Ebb Hack

BOOKS
B MURDER CALLING, by David Whitelaw (Claude Kendall, \$2). When they murder a man in the first chapter of a mystery thriller, and then "do him in" again in chapter five, you have the basis for a real evening of intrigue and excitement. Despite the fact that it is all quite simple in the end, you really will be kept guessing as to the identity of the real "caller" of this murder.

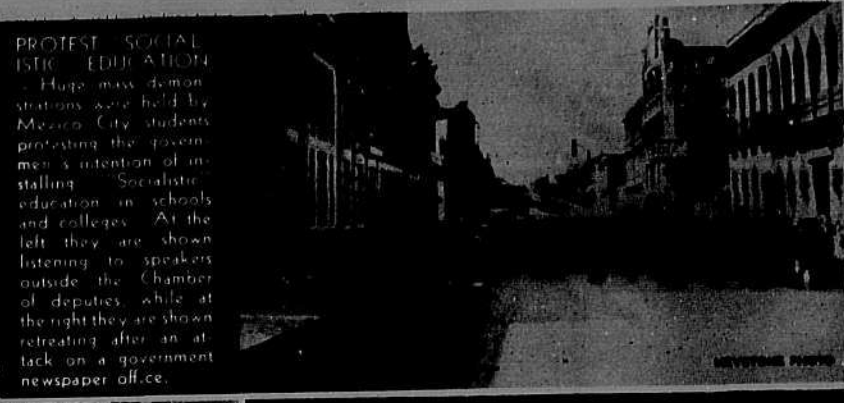
C THE GOODHUES OF SINKING CREEK, by W. R. Burnett (Harper, \$1.50). This long short-story of the before-the-Civil-war period has caused reams of comment by the critics, but its rapid narrative and matter-of-fact style has much that will bring the commendation of many. A feud-story with a new twist, it centers around the old North-South theme that has been done to death already.

A MOVIES
THE WHITE PARADE plays upon the same theme as did "Men in White," but John Boles and Loretta Young make it pleasantly different and realistically interesting. Despite the fact that parts of the picture are a bit clinical and academic, it won't bore you, and the dramalets that break up what might easily become monotonous give touches of humor and humanity that add greatly to its appeal.

C GIRL OF THE LIMBER LOST—This newest filming of the famed Porter novel will probably bring so many tears that you will be kept from going to sleep. Louise Dresser, Ralph Morgan, and Marian Marsh feature a cast that brings many saving graces to the picture. Betty Blythe, as the bird woman, provides the brightest moments of the hour and a half consumed, but she is so limited in her performance that they are few.

A RADIO
CHAMBER MUSIC—Sponsored by the Elizabeth Sprague Coolidge Foundation and the Library of Congress, this new series of four broadcasts will feature concerts by leading virtuosi and chamber music ensembles of America. To be heard on the series are: William Primrose, violinist; Nadia Reisenberg, pianist; the Philadelphia Chamber String Symphony; and the Roth String Quartet. (CBS-WABC network, Saturdays, 4:30 P. M. EST.)

B HOLLYWOOD ON THE AIR—With the signing of Donald Novis, tenor, to star in "45 Minutes in Hollywood," this weekly picture preview program adds another headliner to its already pretentious roster. Also featured are Maria Silveira, soprano, the Four Eton Boys, and Mark Warnow's orchestra. Novis sings new tunes from the latest Hollywood cinema releases. (CBS-WABC network, Thursday, 10 P. M. EST.)

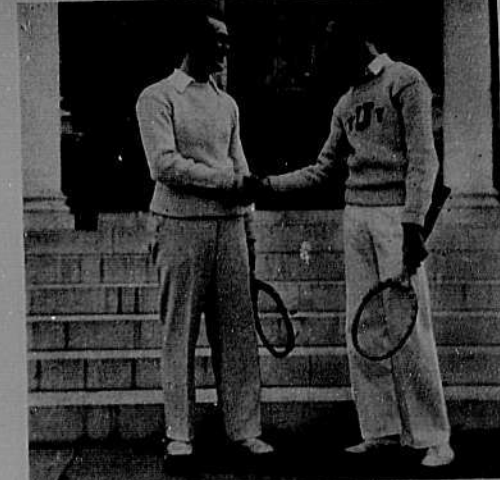


PROTEST - SOCIALISTIC EDUCATION
 Huge mass demonstrations were held by Mexico City students protesting the government's intention of installing "Socialistic" education in schools and colleges. At the left they are shown listening to speakers outside the Chamber of deputies while at the right they are shown retreating after an attack on a government newspaper office.



NEW DEAL ADMINISTRATOR - Pres. Robert Maynard Hutchins, of the University of Chicago (Illinois), has recently been named by President Roosevelt to a recovery post. He is here shown addressing a New York teachers meeting.

COEDS, BEWARE! When All These Deans Compare Notes - This group of notables participated in the dedication of the new women's residence hall at Purdue University (Lafayette, Ind.). (left to right) Naomi McGuire, foods supervisor at the new hall; Dr. Harriet O'Shea, director of personnel for women at Purdue; Florence Pope, director of women's residence halls and commons, University of Chicago; Dean Dorothy C. Stratton, dean of women at Purdue; Mrs. Edna M. Giles, director of halls, University of Kentucky; Dean Agnes G. Wells, dean of women, Indiana University; Mrs. Sarah B. Holmes, assistant dean of women, University of Kentucky; Mrs. Gaynell Neff, director of the Altruria dormitory, Valparaiso University; Mrs. E. C. Elliott, wife of President E. C. Elliott of Purdue; Dean Alice Lloyd, dean of women, University of Michigan; Virginia Cravens, dean of women, Indiana Central College; Mrs. Stanley, director of residences, University of Michigan; Dean Mrs. L. Matthews, dean of the school of home economics at Purdue; and Helen Schleman, director of the new women's residence hall at Purdue.



« «
WINS NET TITLE - Frederick B. Hawley (left), a Union College (Schenectady, N. Y.) freshman, defeated that institution's tennis captain and champion, to win the college tennis cup. Hawley was formerly captain of the Kent School team, and is a Chi Psi pledge.



« «
TEACHERS FOR A DAY - This group of Cortland State Normal School (N. Y.) students were appointed to run the school while the faculty attended a state teachers' convention.

When It Comes to Keeping A Complete Record

of your college career, and especially of this eventful year, you will want a bound file of Collegiate Digest.

The many features and news pictures that Collegiate Digest contains each week will make the perfect collegiate album when the issues are bound in the special Collegiate Digest brown leather binder. Send one dollar today to:

\$1.00 Collegiate Digest P. O. Box 477 Madison, Wis.

Collegeland Explorers . . .

. . . and map collectors, too, will want to frame "A Cartograph of Collegeland" which appears as a special feature of this issue of Collegiate Digest.

We have a limited supply of special reproductions of the cartograph in full color and on heavy paper. These may be purchased for fifty (50) cents each. Send coins or stamps to:

Collegiate Digest P. O. Box 478 Madison, Wis. **50¢**



Collegiate Digest

LIBRARY STATE COLLEGE FOR TEACHERS ALBANY, N. Y.

SECTION "National Collegiate News in Picture and Paragraph"

U. S. TRADEMARK SERIAL NUMBER 21312



Thanksgiving

Irene Holmberg, Drake University (Des Moines, Ia.), sharpens her Thanksgiving Axes as Mr. Turkey looks on.

Collegiate Digest Christmas Suggestions



The gifts on this page may be purchased through the
Collegiate Digest
Shopping Service
11 West 42nd Street
New York City

In ordering please observe the following regulations:

1. Order must be accompanied by remittance—preferably postal money order (stamps will not be accepted)—including sufficient for postage.

2. Orders must state clearly the article desired and should include size, color and all information necessary to the proper filling of the order.

3. Exchanges for color and size will gladly be made upon receipt of the merchandise. Merchandise must be returned by insured parcel post to the Collegiate Digest Shopping Service.

4. Please print or write name and address clearly.

The Collegiate Digest Shopping Service will gladly help you solve all your gift problems.

Send for Gift Catalogue

More gift suggestions next week



- Quilted robe of lined crepe de chine, warmly padded, an exceptional value. In teal, French blue and royal blue. (Postage 20c.) **\$7.95**
- Lazy bones coffee set of silver plate—three pieces in one. The sugar bowl and cream pitcher fit compactly on the top of the coffee pot. (Postage 15c.) **\$5.95**
Two cup size **\$5.95**
Four cup size **\$8.95**
- Bedroom slippers of plain and ribbed knit, in blue, peach, or white dyed any color without charge. (Postage 15c.) **\$3.95**
- All wool throw in waffle weave. Useful for napping or as an extra blanket. In green and white; red and white; blue and white; brown and white. (Postage 20c.) **\$8.95**
- Nightgown and bedjacket ensemble of satin, lace trimmed. In teal or blue; sizes 14 to 17. (Postage 15c.) **\$6.95**
- Hand bag of calf in black or brown, made by one of the most dependable bag makers. It has bill fold, key ring and identification pocket, besides the usual compartments. (Postage 10c.) **\$7.50**
- Umbrella of pure dye silk that will not crack and wears and wears; 16 rib; in blue, brown, black, green, maroon, with assorted handles all smart and new. (Postage 10c.) **\$3.98**
- Gloves of finest quality imported kid with hand sewing on back and cuff; in brown, black or white. (Postage 10c.) **\$2.95**
- Flannel robe of all wool, well tailored. In brown, blue, maroon; sizes small, medium and large. (Postage 25c.) **\$7.50**
- Leather slippers with lamb's wool cuff and inner sole, in brown or black. (Postage 20c.) **\$3.75**
- Pajamas of cotton herringbone in a slip-over style with only one button to fasten; may also be worn open. In blue piped with white; tan piped with yellow; yellow piped with blue; sizes A, B, C. (Postage 15c.) **\$3.50**
- Zipper case for papers of brown grained cowhide. (Postage 15c.) **\$3.75**
- Cig-A-Like—a most useful gift for the smoker who also drives a car. Attaches to the dashboard of any car and by simply pressing the lever it delivers a lighted cigarette. (Postage 20c.) **\$5.00**
- Dressing case of grained cowhide in black or brown, with zipper fastening and all the appurtenances a traveling man requires. (Postage 20c.) **\$5.50**
- Cigarette case of metal with

- smart simulated wood finish. Holds about 12 cigarettes without crushing. (Postage 10c.) **\$3.75**
- Fountain pen and pencil set finished in mottled effect. (Postage 15c.) **\$5.00**
- Desk set complete with pen and marble base in either white or black. (Postage 15c.) **\$5.00**
- Bill fold of pigskin with compartments enough to hold assorted cards and licenses. (Postage 10c.) **\$2.95**
- Evening bag of white with either gold or silver thread; also in darker brocades. A new and very attractive style with zipper fastening. (Postage 15c.) **\$5.00**
- Evening handkerchief of chiffon with pattern in metal thread, in the popular large size, in royal blue, red, white, black, Chinese red, green. (Postage 10c.) **\$1.50**
- Perfume — Guerlain's exquisite odor Vol de Nuit. Small size **\$10.00**; large size (Postage 20c.) **\$20.00**
- Perfume atomizer encrusted with gold in cracked effect. (Postage 15c.) **\$2.00**
- Evening jewelry of smoked crystal, clear crystal, emerald, carnelian, onyx or chrysochryse combined with rhinestones. (Postage 15c.) **\$2.00**
- Bracelet **\$5.00**
Earrings **\$3.50**
Pin **\$3.00**
- Velvet nightgown that may also be worn as an evening gown. The low cut back and slim lines give this gown a double purpose. Of washable velvet in flannel; in strapless blue; willow green; black; white; sizes 14, 15 and 16. (Postage 15c.) **\$10.95**
- Zibeline sachet imparts a lovely fragrance to one's closet. In gold, green, blue or pink. (Postage 10c.) **\$3.75**
- Souffa—the warmest things you ever put your toes in; of velvet trimmed with white bunny; red, light blue, royal blue, green, peach, black. (Postage 15c.) **\$1.95**
- Suede bag which is also a muff. One of the newest and most popular styles. In black or brown. (Postage 15c.) **\$2.95**
Initials extra each 50c, periods 10c.
- Sports set of hand knit wool, so gay and attractive for winter sports wear. In red, yellow, blue or white with gay contrasting pattern. (Postage 15c.) **\$4.00**
Socks **\$4.00**
Scarf **\$5.50**
Cap **\$3.50**
Mittens **\$3.50**
- Printed linen sports handkerchiefs in high colors in flower design or smart stripes. Mention color to predominate. (Postage 10c.) Each **50c**
- All wool socks in the bold stripes college men love; grey and red; grey and yellow; grey and white; brown and yellow; brown and green. (Postage 10c.) a pair **55c**
- Overboots for the outdoor man (or woman). They are worn over the shoes; are warmly lined with lamb's wool; have zipper closing and crepe rubber soles. Sizes 3 to 13. Give shoe size when ordering. (Postage 25c.) **\$10.00**
- House slippers of leather, leather lined; with flexible, hand-turned soles. In blue, black, brown, green, maroon. (Postage 20c.) **\$2.95**
- Lounging robe of silk faille, all silk lined in jacquard pattern. In brown, black or blue; sizes small, medium, and large. (Postage 25c.) **\$12.95**
- Silk damask pajamas, very specially priced for the holidays. In white, green, maroon, lavender, golden tan, yellow, old gold, orange, light blue, and medium blue; sizes A, B, C, D. (Postage 15c.) **\$7.85**
- Evening scarf of pure dye silk with fringed edge, monogrammed in black and white (give initials plainly, indicating last initial)—one week's delivery. (Postage 10c.) **\$3.95**
- Hurricane pipe. The bowl is covered with a pierced cap to prevent the ashes from blowing about and to slow up the combustion of the tobacco. The top moves on a hinge to permit filling, lighting and cleaning. Of highest grade natural bruyere. (Postage 10c.) **\$7.50**
- Wool knit scarf in regimental stripes. (Postage 10c.) **\$3.50**
- Tie of hand-knit silk in smart stripes: two blues and red; blue, grey and yellow; red, black and yellow; red, brown, and yellow. (Postage 10c.) **\$2.50**
- Cigarette lighter and case in black enamel on metal frame holds a package of cigarettes. (Postage 15c.) **\$3.95**
- Evening studs of jet in white gold filled setting. (Postage 10c.) **\$4.50**
- "Shipmate" watch which is practically indestructible; impervious to shock; with unbreakable crystal and radium hands and numerals. The specially treated cowhide strap will shed water. (Postage 10c.) **\$25.00**
The same watch in a smaller size for women **\$30.00**
- Tie clip in either gold filled or Sterling; with three smart letters. (Postage 10c.) **\$5.00**
- Pocket hand warmer that fits into any pocket. It keeps an even temperature of 120 for twenty hours. Perfect for outdoor sports. (Postage 10c.) **\$1.50**



PHOTOS BY LEE COVINE

NO MORE ENERGY ? . . .

GET A LIFT WITH A CAMEL!



EDWARD KENT, '36—Geology Student. Edward Kent knows the value of a full reserve of natural, vibrant energy. And that's one of the reasons why he sticks to Camels. In his own words: "It takes a lot of hard work to acquire any thorough knowledge of geology—and a lot of energy. It's tiring at times, but like most of the fellows around here, I have found that smoking a Camel cheers me up...chases away all fatigue...gives me that 'lift' in mental alertness and physical well-being which I need to be able to go on working with renewed energy."

TOBACCO EXPERTS ALL SAY:

"Camels are made from finer, More Expensive Tobaccos—Turkish and Domestic—than any other popular brand."



ANNETTE HANSHAW

JOIN THE NEW
CAMEL CARAVAN

featuring
Annette Hanshaw
Walter O'Keefe

Glen Gray's Casa Loma Orchestra
Ted Husing

TUESDAY
10:00 P.M. E.S.T. 8:00 P.M. M.S.T.
9:00 P.M. C.S.T. 7:00 P.M. P.S.T.

THURSDAY
9:00 P.M. E.S.T. 9:30 P.M. M.S.T.
8:00 P.M. C.S.T. 8:30 P.M. P.S.T.

Over Coast-to-Coast WABC-Columbia Network



MISS EVELYN WATTS, popular New York debutante: "The last Camel I smoke at night tastes just as good as the first in the morning. Camels are very mild, too. Even when I smoke a lot, they never upset my nerves."



SURVEYOR. "When I'm working hard, I find that a great way to keep up my energy is to smoke a Camel every now and again," says Prescott Halsey. "Camels seem to bring back my natural energy and chase away all feeling of tiredness."



Copyright, 1934.
H. J. Reynolds Tobacco Company

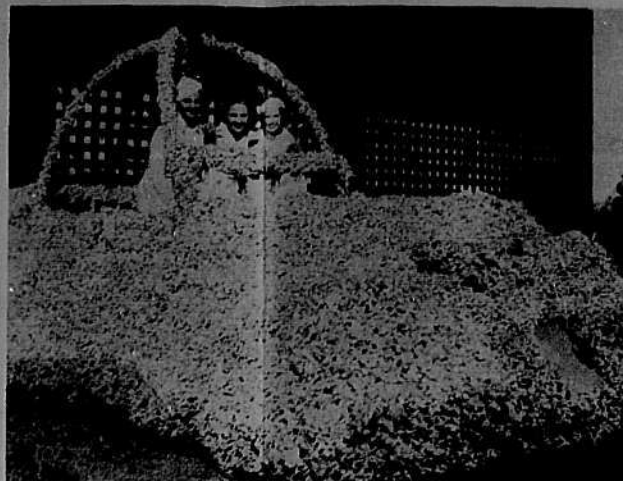
CAMEL'S COSTLIER TOBACCOS NEVER GET ON YOUR NERVES!



FROM STUDENT TO MAESTRO » Pete Underwood (right) has risen from a collegiate musician at Oglethorpe University (Atlanta, Ga.) to the leadership of one of the south's most popular orchestras.



HEADS DRAMA DEPARTMENT » Dr. Rudolf C. Bednar directs the activities of Christian College (Columbia, Mo.) student dramatists.



EXACTLY 2,338 CHRYSANTHEMUMS were used to cover the Delta Chi Omega float for the University of Tulsa (Okla.) homecoming



CAMPUS QUEEN » Bernice Cannon has been elected "Miss St. Mary's" in a popularity poll at St. Mary's College (Notre Dame, Ind.).



AWARDED HONOR DEGREE » Dr. Rufus B. von KleinSmid, (center), president of the University of Southern California (Los Angeles), poses with Dr. G. Bromley Oxman (left), president of DePauw University (Greencastle, Ind.), who has just conferred upon him an honorary degree of Doctor of Laws.



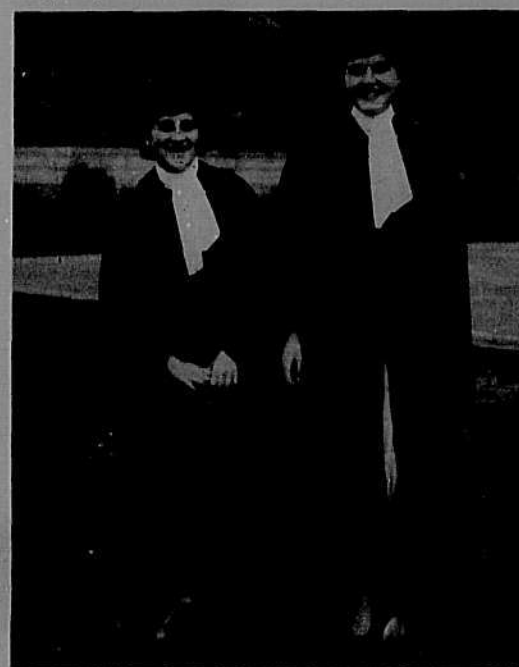
Above
THEY'RE ALL LABELLED » So you just can't help telling this is Gwen Jackson and Ellen Fee, popular New Jersey College for Women (New Brunswick) co-eds.

Left

A BOUQUET FOR THE FROSH » Freshmen at Brockport State Normal School (N. Y.) are brought into the school's folds with a series of new and unusual stunts. Here one of them gets a cabbage.



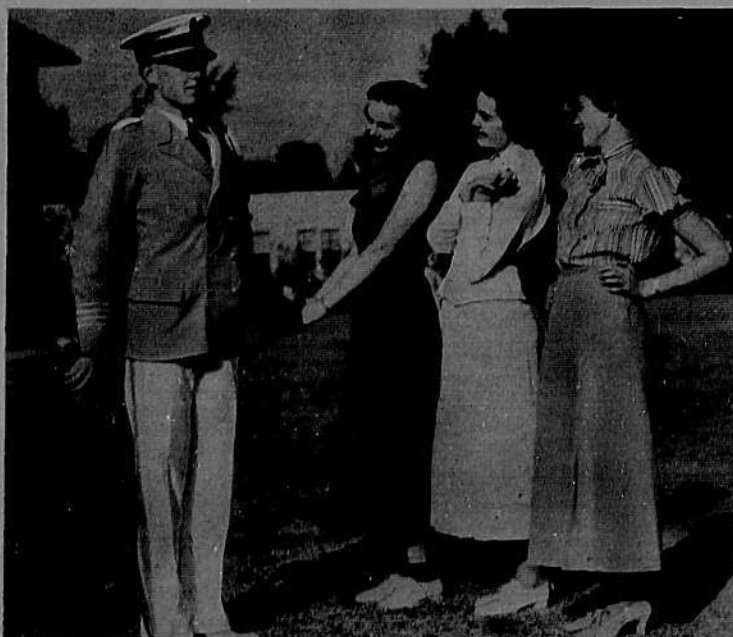
SHE OUTPLAYED THE MEN » So the Cornell University (Ithaca, N. Y.) polo coach gave Nathalie Colvocavess a regular place on the team.



Above
PRIZE SCHOLARS » Rae Schwartz and Ruth Peterson have just received the two alumnae awards for having the highest scholastic standings at Simmons College (Boston, Mass.).
KEYSTONE PHOTO

Right

SHE HAS AN AIM IN LIFE » Nancy Warden is the captain of the women's rifle team at Southwestern (Memphis, Tenn.). Here are just a few of the rifles she uses in winning her championships.
KEYSTONE PHOTO



"HE'S ALL DRESSED UP . . ." » But he has some place to go, for Don Madsen is the drum major of the San Jose State College (Calif.), and all of the members of the band have new uniforms just like his.



FAIR KNIGHTS OF THE ROAD » But they're just a quartet of Simmons College (Boston, Mass.) co-eds all dolled up for the annual hobo party.
KEYSTONE PHOTO



PUSHING FOR DEAR OLD SAN DIEGO » The sophs pushed the hardest, though, and will reign over San Diego State College (Calif.) freshmen for another year.



AS ROYALTY WATCHES, General Smuts, rector of St. Andrews University (England) receives the "freedom of the city" from the Lord Provost of Dundee.
KEYSTONE PHOTO

Holding The Bag By Cecelia Hendricks Theta Sigma Phi Indiana University

"I hazard the remark, brothers," chuckled Buck Howell, "that this time we have succeeded in putting one over on Chet. It is now an hour and a half since we left him out in the darkest corner of Henley's Woods holding the bag for the snipe we were to beat up."

"Chet's sewed up this time. Up till now, whenever we tried to get a joke on him, his fool luck saved him before he went under even the first time."

"My weak intelligence," ruminated Sam, "is still inadequate in figuring out how we could hook Chet on that snipe stunt, snipe hunting."

"Merely a modern example of the old truth that when a thing is too old it is new, and that there is nothing new under the sun."

"What about you, Bob. Do you finally admit that we have caught Chet without his usual side-kick, Lady Luck?"

"Nope, not yet. But I'm weakening."

"You're a die-hard for obstinacy, Bob."

"I grew up with Chet, and I've never seen him when luck wasn't with him. Once his jitney gave out forty miles from nowhere, and who came along and towed him in but Senator Black. The Senator became so interested in Chet that he gave him a job in his office that summer and offered to help him through college."

"It got on my nerves to think of such an unbroken record. We had to do something to stop the continuity."

"Chet never has been uppity about his good fortune."

"Well, it's unhealthy for anybody to be so darn lucky. . . . Answer the doorbell, some one."

A man in uniform was ushered into the room.

"Good evening, gentlemen. I am the Chief of Police. I want to talk with the president."

"I'm the president," faltered Buck. "What's wrong?"

"Do you have a member by the name of Chet Stevens?"

"Yes, what's Chet done?"

"We'll come to that. Did you, about an hour and a half ago, leave the said Chet Stevens holding a bag for snipe in the corner of Henley's Woods nearest the rifle range?"

Bob turned pale. "No one could be using the rifle range this time of night! Nothing's happened to Chet, has it, sir?"

"No, Stevens is not hurt. I'm just checking up on his story, to make sure that's how he got there."

"He surely didn't lodge—I mean, what did he go to your station for?"

"To report what he found. Said he got tired of waiting for you to come back, and sat down on a pile of leaves. That's how he happened to discover there was something under the leaves. He dug it out and brought it down to the station."

"What did he find?"

"The loot—the stuff that was stolen last week when the big Grant jewelry store was robbed. Watches and diamonds—nearly a sackful. He'll get \$200 reward."

"Well, well, Wellesley the girls as they were way back in the Gay 90's. They bustled around a bit in those days, it seems, as well as carry the good old umbrella. For protection? Well, not exactly, but they were the reigning beauties of the day. While, at the right, ladies and gentlemen, we have the Wellesley College (Mass.) co-eds of today. They still have the umbrella, but there's

COLLEGIATE DIGEST SECTION is looking for Short Short stories. Manuscripts must be accompanied by return postage. Payment at regular rates upon acceptance. Address: Story Editor, COLLEGIATE DIGEST SECTION, P. O. Box 472, Madison, Wis.



MISS CENTRAL ARIZONA — And, incidentally, Frances Howell is also the 1934 Homecoming Queen at Arizona State Teachers College (Tempe).

COURT QUEEN — Kathryn Samuels is the leading co-ed athlete and basketeer at the University of Akron (Ohio). Phi Mu.

C. C. N. Y. STUDENT IN RUSSIA — Martin Gula, College of the City of New York undergraduate, has just returned from a tour of the U. S. S. R.



Well, well, Wellesley the girls as they were way back in the Gay 90's. They bustled around a bit in those days, it seems, as well as carry the good old umbrella. For protection? Well, not exactly, but they were the reigning beauties of the day. While, at the right, ladies and gentlemen, we have the Wellesley College (Mass.) co-eds of today. They still have the umbrella, but there's

Rah! Rah! Rah! Kingfish!

KEYSTONE PHOTO

ENGLISH LIT
TRAGEDY IN THE SHAKESPEAREAN SENSE IS THE STORY OF A GREAT MISFORTUNE OVERCOMING A PERSON OF NOBLE BIRTH -- HAW!

SHAKESPEARE HAD A TRUST IN BEAUTY -- HE WANTED TO BELIEVE THAT IF THE FACE WERE DELIGHTFUL THE MIND MUST BE SO -- BUT -- EXCEPT -- ER --

HIS PLAYS, ON THE WHOLE, DEAL WITH EVIL AS BEING UNNATURAL HE GLORIFIES WAR, BUT --- ETC.

PIPE LIT
A PIPE OF "P.A." CHASES SHAKESPEARE AWAY! -- OH, BOY! PRINCE ALBERT!

AFTER EVERY CLASS IT RINGS THE BELL!

PIPE smokers everywhere have labeled Prince Albert "The National Joy Smoke" because they have found it a superior mixture of choice, top-quality tobaccos. Every hint of "bite" is removed from mild, mellow "P.A." by a special process. One pipeful of Prince Albert will prove to you why smokers say, "You never know how good your pipe can taste until you try 'P.A.'"

PRINCE ALBERT
-- THE NATIONAL JOY SMOKE!

WINS SCHOLAR'S CUP — Pres. Harlan L. Feeman, of Adrian College (Mich.), presents the annual scholarship award to Donald E. MacQueen.

CELEBRATE HIS 25TH YEAR ON CAMPUS — Willie Six has been athletic trainer at the University of the South (Sewanee, Tenn.) for the past quarter century. "Willie Six Day" was celebrated there recently.

EMPHASIZE INTRAMURALS — To replace football, abandoned in 1930, Loyola University (Chicago) officials are pushing an extensive intramural program. Here is one of the prizes offered for competition.

CROSSWORD PUZZLE

1	2	3	4	5	6	7
					8	
	9	10	11	12		
	13		14			
15	16				17	18
19	20	21				
	22	23		24		
	25			26		
				27		
28			29	30	31	
			32	33	34	
				35		

Horizontal

- War veteran violinist.
- Feline.
- Pluck.
- Cubic centimeter.
- Vigilant.
- End of vehicle axle.
- "Ignorance is . . ."
- Edward to his best pal.
- Character mentioned in "Treasure Island".
- Possessive pronoun.
- Sheep do it habitually.
- Type of current generated by a battery (abbr.).
- Sigma . . .
- Often found in a can of pork and beans.
- Don't be afraid.
- An article of food.
- Chromium.
- A living fly trap.
- A Russian engineer and composer.
- Inhabitants of Denmark.
- Syllable of verb indicating past tense.
- Coagulated mass.
- Girl (slang).
- In utter confusion.
- Noted for its school of veterinary medicine.
- Child psychologist.
- Useful in crossing a river.
- Poison.
- Used in billiards.
- A lowland in a mountainous region.
- American sculptor (initials).
- Pa.
- Personal pronoun.
- Kiloliter (abbr.).

Vertical

- Kr. (chem.).
- One who designs on metal.
- Silicon.
- And (L.).
- Top.
- Graces.
- A succession of telephone poles.
- Gleam.
- A great concern of a ruminant.
- Pi.
- Otherwise.
- Amalgam.
- Cakes with a filling of fruit or cheese.
- Two horseshoes.
- Sweetheart.
- Dough spelled phonetically.

Answer To Last Week's Puzzle
By Robert Wrege
Indiana University

MICHIGAN TULANE
LOU R HELEN LIL
SWR EN VISITS I
NAVY ORE TO AT
A FASTER SN COM
MD L E R SEMI
EGRET PLUNK AT
H AGE GE ST
FOOTBALL SENIOR
AR U ZTA ANON U
LIABLE PLEDGES
LOVABLE ITS LH
E SLATE TAKI
WORK ETA N NOTE
MOTOR SUNDAY E

By A. C. Yow II, Alpha Psi
Alabama Polytechnic Institute.

Report Card
By Prof. Metro Ebb Hack

BOOKS

B DEATH RIDES THE AIR LINE, by William Sutherland (Claude Kendall, \$2). Land a plane at a New Jersey airport with one murdered man and five suspected murderers and you have a plot that will give you plenty to worry about for a couple of hours. Add to the plot the smooth-flowing dialogue and description of William Sutherland, and you make the worrying a very interesting past-time. Inspector Grady does most of the investigating—and gets into the usual mystery-story complexities. As usual the one least suspected is the guilty one—and we'll give you no more tips about it.

A THE STORY OF THE AMERICAN INDIAN, by Paul Radin (Liveright, \$2.50). If you've been doing a lot of wondering about the why's and where-fore's of the American Indian, you will gain some real dope from this matter-of-fact account of their origin, development, and annihilation. From "The Golden Day" to "The Heel of the Conqueror", the chapters lead the reader through a complete record of the original Americans. It is filled with historical fact, completely annotated, bibliographed, and indexed.

MOVIES

A EVELYN PRENTICE—William Powell, Myrna Loy and Una Merkel get together again and turn out a really super-sophisticated mystery story. The story isn't particularly new, but a couple of original twists, a dash of humor, and a bit of smooth production work bring a really entertaining production.

A WE LIVE AGAIN—Despite the fact that Tolstoy's *Resurrection* has been filmed twice before in the U. S., it took Producer Samuel Goldwyn to set his hand to producing a near-accurate interpretation of the social message contained in the book. He chose Anna Sten, Fredric March and Director Rouben Mamoulian to make this one of the best pictures of the season—and they fulfilled all expectations.

RADIO

A SYMPHONY—The New York Philharmonic-Symphony orchestra this year has a vivid program of 30 hour broadcasts for Sunday afternoon symphony listeners. Presenting distinguished guest artists, the series is under the direction of Otto Klemperer, with Lawrence Gilman, noted critic, as program commentator. (CBS, Sundays, 3 P.M. EST).

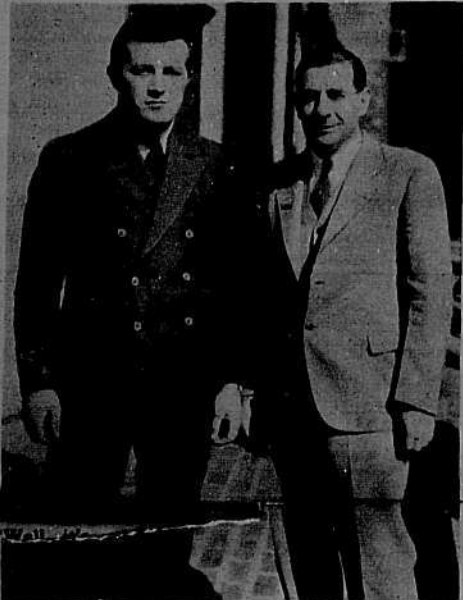
B CONTENTED HOUR—With a complement of smooth singers and the smooth announcing of Jean Paul King, the orchestra under the direction of Morgan L. Eastman provides a "contented" hour of music. A few old-timers, a bit of the classical, and a dash of the sophisticated modernism, bring a universal music-appeal to this program. (NBC-WEAF network, Mondays, 10 P.M. EST).



LOCATED "NEAR NEW HAVEN" * The editors of the *Harvard Lampoon*, Harvard University (Cambridge, Mass.) humor magazine, put out a special issue for the Harvard-Princeton grid clash. A few days before publication date, the entire printing "disappeared." They claim they were found "near New Haven," which, incidentally is the home of Handsome Dan, Yale mascot, which disappeared some time ago. KEYSTONE



DEDICATE NEW DORMITORY * Above is a general view of the dedication ceremony for the new Mary Harkness house at Connecticut College for Women (New London). The new dormitory will accommodate 75 students. At the right are shown Mrs. Mary Harkness (left), donor of the building and wife of the famed financier, and President Katharine Blunt, head of the college. KEYSTONE PHOTO



REPRESENTS STUDENTS * Leo N. Skemp (left), Pennsylvania State College student, is a member of the boro council of State College. He is shown with W. F. Leitzell, head of the local government.



BARBER SHOP QUARTET * This group of songsters is an off-shoot of the Pomona College (Claremont, Calif.) championship men's glee club.



BEST STUDENT * Dean William H. Wannamaker congratulates W. H. Scofield for making the highest scholastic average at Duke University (Durham, N. C.).

Collegiate Digest

SECTION

"National Collegiate News in Picture and Paragraph"

U. S. TRADEMARK SERIAL NUMBER 313412



ROMANCE * Elizabeth Dole, heiress to Pineapple millions, and Harvardman David H. Porteus, son of a University of Hawaii professor, have filed intentions to wed. INTERNATIONAL PHOTO



BACKED BY HUEY * that's the "Long" of it. The short of it is that the player is Abe Mickel, University of Louisiana (Baton Rouge), recently elected state Senator. KEYSTONE PHOTO



HOME EC * Mrs. Chesborough Lewis Tullis, member of Toledo "400", does "home work" in her kitchen. She's a part time student at the University of Toledo (Ohio). KEYSTONE PHOTO



POLITICS ARE SERIOUS at Glasgow University (Scotland). The Nationalists are here attempting to keep the other factions from voting. Sir Iain Colquhoun, of Luss, was elected Lord Rector. KEYSTONE PHOTO

It's Your LAST Chance!

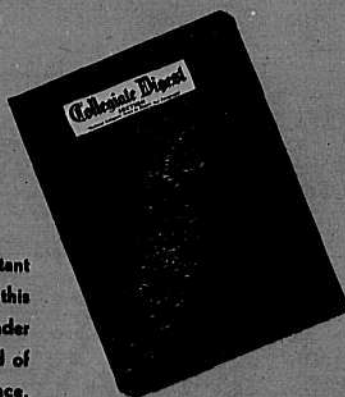
The Collegiate Digest Section All-American Poll closes Midnight, December 1

This is the last ballot that will appear in the Collegiate Digest Section. Fill it in and mail it now! Be sure that YOUR champions gain a place on this national honorary eleven.

Remember, if you've voted once, and have changed your mind, you can vote again - - but do it NOW!

Awards will be announced first issue in January

\$1⁰⁰



Keep a permanent pictorial record of the important events that take place on the nation's campuses this year. An attractive brown leather loose-leaf binder for your Collegiate Digest will keep your record of 1934-1935 up to date and ready for quick reference. Send \$1.00 to

Collegiate Digest
SECTION
P. O. BOX 472
MADISON WISCONSIN



All American Editor, Collegiate Digest
P. O. Box 472, Madison, Wis.

Dear Sir: My selections for the 1934 Collegiate Digest All American Football team are:

ENDS _____

TACKLES _____

GUARDS _____

HALFBACKS _____

FULLBACK _____ CENTER _____

QUARTERBACK _____ CAPT. _____

(name) _____ (school) _____



FIRE! FIRE! * Students at Hiram College (Ohio), aided by volunteer firemen, recently fought an all night battle against the flames which destroyed the school's administration building. ACME PHOTO



UNUSUAL is the word that best describes this snapshot of one of the presentations of the Studio Art Club, Ohio University (Athens, O.). The club's performances have become a popular feature on the campus.

Christmas Suggestions

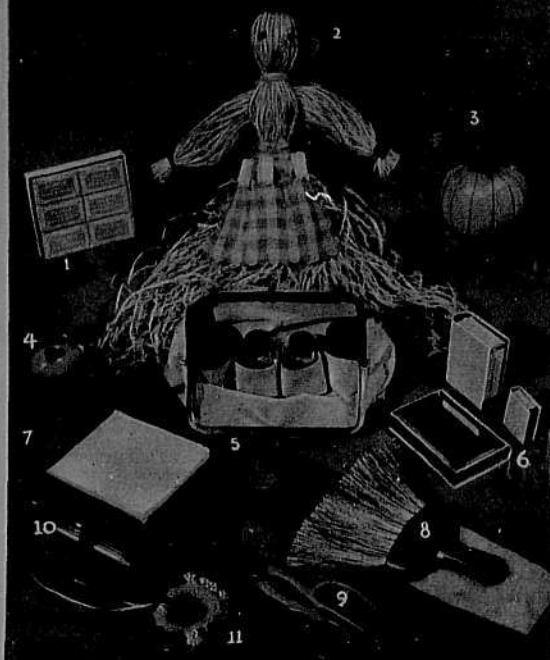
The gifts on this page may be purchased through the Collegiate Digest Shopping Service

In ordering please observe the following regulations:
 1. Order must be accompanied by remittance—preferably postal money order (stamps will not be accepted)—including sufficient for postage.
 2. Orders must state clearly the article desired and should include size, color and all information necessary to the proper filling of the order.
 3. Exchanges for color and size will gladly be made upon receipt of the merchandise. Merchandise must be returned by insured parcel post to the Collegiate Digest Shopping Service.
 4. Please print or write name and address clearly.
 The Collegiate Digest Shopping Service will gladly help you solve all your gift problems.

Send for Gift Catalogue

Collegiate Digest Shopping Service

11 West 42nd Street New York City
 More gift suggestions next week



1. Sachet for closets or bureau drawers—six small cakes to the box; in lavender, rose, and rose geranium; one odor to the box. (Postage 10c.)... **\$1.00**

2. Raffia doll—a most helpful companion for the gardener. The raffia is for tying flowers and bushes; in the apron are wooden markers. (Postage 15c.)... **\$1.25**

3. Fruit soap—a large orange of sections of fine soap. It also comes in an apple shape. (Postage 15c.)... **\$1.00**

4. Tape measure in an amusing holder shaped like an egg. To pull out the tape take hold of the fly. In assorted colors. (Postage 10c.)... **\$.50**

5. Traveling bag of moire, rubber lined. Contains two bottles and two jars and has room for wash cloth and tooth brush; in peach, rose, blue or green. (Postage 15c.)... **\$1.25**

6. Set of three attractive holders for deck of cards, package of cigarettes and matches; of white leather with mirror backs. (Postage 15c.)... set **\$1.00**

7. Telephone pad with metal stand on which is an amusing dog decoration, and having a convenient pencil in a holder; in black or green. (Postage 15c.)... **\$1.00**

8. Shoe dauber and whisk broom in leatherette case, in brown, green or red. (Postage 10c.)... **\$1.00**

9. Kitchen shears that serve also as bottle opener, with green, blue, red, cream or yellow handles. (Postage 15c.)... **\$1.00**

10. Pencil with flashlight attached. Most useful for places where there is no other light. (Postage 10c.)... **\$1.00**

11. Drip Guard is a circle of rubber sponge gaily decorated in colored fruits. It is slipped over the neck of bottles to catch the drip of bottles before it can reach the cloth or table. (Postage 10c.)... **\$1.25**

12. Book ends in green bronze in a distinctive design by McClelland Barclay. (Postage 30c.)... **\$5.00**

13. Pullman slippers in brown or black for either men or women. In whole sizes only. (Postage 10c.)... **\$3.00**

14. Condiment set consisting of small blue glass tray with chromium rim and sauce pot and two shakers of chromium. New and smart for supper parties. (Postage 20c.)... **\$4.50**

15. Hammond globe—a gift the whole family can enjoy. The chart on the base tells the time in any part of the world. The globe is 9 inches in diameter. (Postage 20c.)... **\$5.00**

16. Crane's fine stationery attractively boxed with 1 qr. each of letter and note size, with border in blue, grey or green. (Postage 15c.)... **\$3.00**

17. Address book and engagement pad in red, green or blue with smart gold stripes. (Postage 15c.)... **\$4.50**

18. Newspaper or book holder with glass base and chromium up-rights. Comes also with black composition base. (Postage 20c.)... **\$5.00**

19. Flat fifties—an attractive cover that fits over the top of a tin of fifty cigarettes. This one of brown leather with gold tooling is particularly good-looking. Including three letter monogram. (Postage 10c.)... **\$3.00**

20. Lingerie set of celanese with hand painted decoration—three useful envelopes for handkerchiefs, gloves or hose, and small lingerie; in blue, rose or green. (Postage 10c.)... **\$3.95**

21. Bridge set of pin morocco containing two decks of cards, two score pads and two pencils, in red, brown or green. (Postage 20c.)... **\$5.00**

22. Gear shift knob of black composition with Sterling silver center for monogram. Give make of car and year when ordering. Including three initials. (Postage 10c.)... **\$3.00**

23. Military brushes and comb in a case of brown or black grained cowhide. (Postage 20c.)... **\$4.50**

24. Library set of shears and paper cutter in mottled leather case. No desk is complete without one. In brown, red or green. (Postage 15c.)... **\$3.00**

25. Pigskin or black leather belt with Sterling silver initialled buckle. The attractive bakelite box in which these come may be used for cigarettes later. (Postage 15c.)... **\$3.50**

26. Saddle ash tray of pigskin with stirrup ornaments. It is particularly handy because it hangs on the arm of the chair. (Postage 10c.)... **\$2.75**

27. "On Me!" a new game that is proving an instantaneous success. It consists of layout and number machine all packed in an attractive box; in black and silver, green and silver, red and silver. Fine for those with gambling blood. (Postage 15c.)... **\$2.50**

28. Sewing kit most complete with six spools of darning thread and fourteen spools of colored silks, emery, tape measure, thimble, bodkin, scissors and package of needles; in black, red, navy blue or green leather case. (Postage 15c.)... **\$2.95**

29. Clock of black composition in a smart square shape suitable for a desk or night table. (Postage 15c.)... **\$2.95**

30. Round clock in a new and modern design. It comes with a stand for your table and is splendid for travelling because it is small. In black, white or blue. (Postage 15c.)... **\$2.95**

31. Tie rack that holds a great number of ties, all easily seen. The pegs roll so ties may be drawn out freely. (Postage 15c.)... **\$1.50**

32. Table lighter decorated in sporting designs: hunting, polo and golf scenes, or duck, sailfish and dog decorations, by Cyril Gorainoff. (Postage 15c.)... **\$2.50**

33. Engagement and memorandum pad in brown, black, green or blue leather cover with gold tooling. (Postage 10c.)... **\$1.50**

34. Razor Parkit—a holder for the razor which fastens to the wall, complete with Gillette razor, both chromium plated. (Postage 15c.)... **\$2.00**

35. Argonut that ends forever the question of how much to score on each bridge hand. So simple anyone can use it. (Postage 15c.)... **\$1.50**

36. Shoe horn of pigskin with nickel ring to hold while in use and for hanging. (Postage 10c.)... **\$1.50**

37. Collar button box of black enamel with either green or black top. A gilt collar button serves as a knob on the top. (Postage 10c.)... **\$2.00**

38. The newest thing in a key case, of bakelite and chromium, in green, black, red, or tortoise shell. (Postage 5c.)... **\$1.50**

39. Razor blade holder of white china decorated by Cyril Gorainoff with amusing hunting, duck shooting or fishing scenes. (Postage 10c.)... **\$2.00**

40. [Image of a gift item]

41. [Image of a gift item]

42. [Image of a gift item]

43. [Image of a gift item]

44. [Image of a gift item]

45. [Image of a gift item]

46. [Image of a gift item]

47. [Image of a gift item]

48. [Image of a gift item]

49. [Image of a gift item]

50. [Image of a gift item]

51. [Image of a gift item]

52. [Image of a gift item]

53. [Image of a gift item]

54. [Image of a gift item]

55. [Image of a gift item]

56. [Image of a gift item]

57. [Image of a gift item]

58. [Image of a gift item]

59. [Image of a gift item]

60. [Image of a gift item]

61. [Image of a gift item]

62. [Image of a gift item]

63. [Image of a gift item]

64. [Image of a gift item]

65. [Image of a gift item]

66. [Image of a gift item]

67. [Image of a gift item]

68. [Image of a gift item]

69. [Image of a gift item]

70. [Image of a gift item]

WANT TO RELIEVE
TIREDNESS ? . . .

GET A LIFT
WITH A CAMEL!



LYMAN CHIPMAN, '37—Business Student: "Intense concentration on the complicated financial structures of great nations may make me a better business man some day, but it sure makes me plenty tired at times right now," says Lyman Chipman. "I never let fatigue take the keen edge off my thinking. To keep mentally alert and at the same time retain my physical ease... well-being, I smoke Camels. I know that a Camel will chase away the dull feeling that comes after a few hours of hard study."

ALL TOBACCO MEN KNOW:

"Camels are made from finer, More Expensive Tobaccos—Turkish and Domestic—than any other popular brand."



GLEN GRAY

TUNE IN ON THE
NEW
**CAMEL
CARAVAN**
featuring
GLEN GRAY'S
CASA LOMA
ORCHESTRA

WALTER O'KEEFE
ANNETTE HANSHAW
TED HUSING

TUESDAY
10:00 P.M. E.S.T. 8:00 P.M. M.S.T.
9:00 P.M. C.S.T. 7:00 P.M. P.S.T.

THURSDAY
9:00 P.M. E.S.T. 9:30 P.M. M.S.T.
8:00 P.M. C.S.T. 8:30 P.M. P.S.T.

Over Coast-to-Coast WABC-Columbia Network



MISS ANNE GOULD, popular young society leader, says: "I honestly like Camel's taste better than any of the other cigarettes. And I see no reason for letting cigarettes make you nervous—Camels never make me edgy or jumpy."

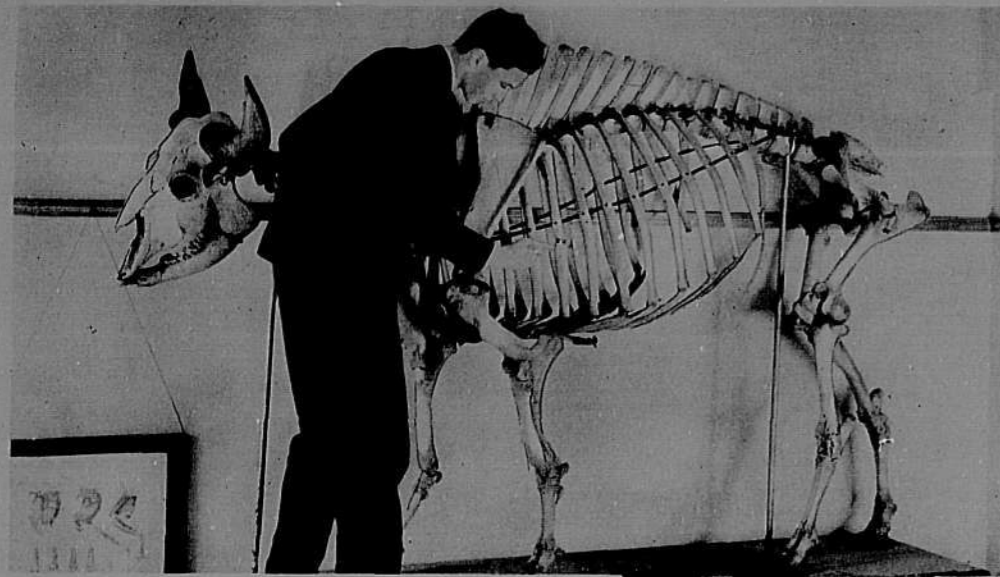


CIVIL ENGINEER, Capt. Eric Loch says: "I always have Camels—rely on them for good cheer—the 'lift' they give my energy when I'm feeling 'low'! And the longer I smoke them, the more I appreciate their rich, milder flavor."



Copyright, 1931,
H. J. Heynolds Tobacco Company

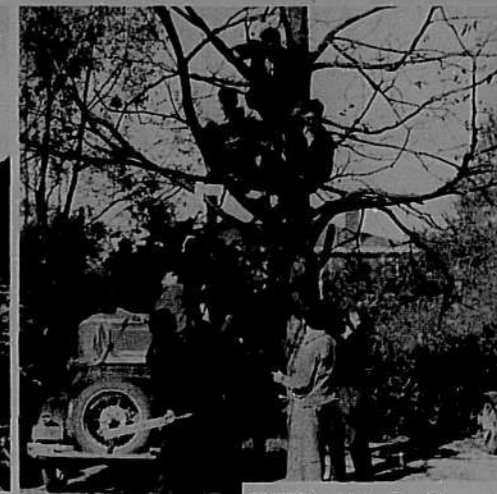
**CAMEL'S COSTLIER TOBACCOS
NEVER GET ON YOUR NERVES!**



DEAD SHOT » and here's the evidence. The skeleton of a buffalo, shot by the Grand Duke Alexis of Russia in 1872, is among the prized possessions of the Brown University (Providence, R. I.) biological laboratory.



Above
ON THE TRAIL » Students at the University of Oregon (Eugene) make their geology trips cowboy style.



TREED » Alpha Tau Omega pledges at University of Georgia (Athens) came down from their perches (Left) and "took their medicine" (Right).



Above
PRESIDED » Cecil J. Wilkinson, chairman of the National Interfraternity Conference, lead the conference's 26th annual session in New York. Phi Gamma Delta.

Left
WHAT ARE LITTLE GIRLS MADE OF? » This robot found hydrogen, phosphorus, and iron, and since the girls paid admission to the M. I. T. dance according to their metallic value, they all got in for less than ninety cents.

Right Above
ONE OF THE REASONS WHY homecoming was a success at Ohio State University (Columbus) was Mary Alma Oppenheim, queen of the event. She's a Chi Omega.



Right
LAB MINING » The course in gold assaying at Lehigh University (Bethlehem, Pa.) is popular among undergrads.



Above
THE ONLY MAN ever to hold office at the Colorado Woman's College (Denver) is Gary Russell, 4, son of an alumna. He was recently elected official sophomore class mascot.

Left
LECTURE HOUR » Students at Michigan State College (East Lansing) snapped by the candid camera during a physics class.

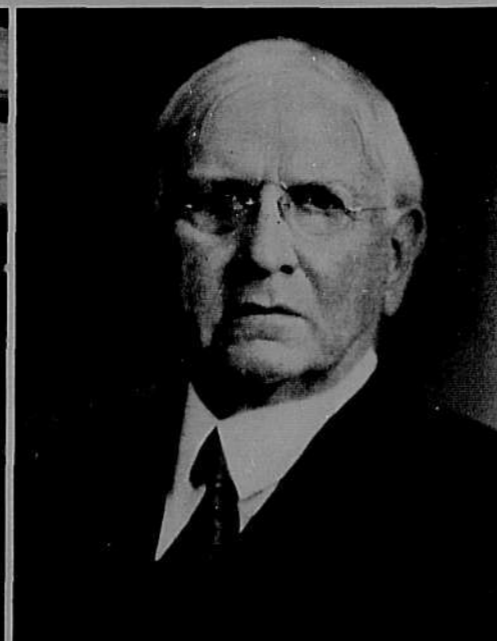
Below
OFF TO CLASS » These co-eds at Oxford University (England) ride bikes to and from classes. Cycling is the latest undergraduate fad for both women and men.



GOVERNOR'S DAUGHTER LOSES, FATHER WINS » Peggy Landon (Right), University of Kansas (Lawrence) wasn't elected vice-president of the freshman class, but her father was reelected governor of the state.



HE'S GOT A GROUCHO ON » George Bretz, Duke University (Durham, N. C.), is looking for his half year's Marx.



DOUBLY HONORED » Dr. Charles F. Thwing, president-emeritus of Western Reserve University (Cleveland, O.) was honored on his 81st birthday when Thwing Hall was dedicated in his honor.



SPRINT CHAMP » Molly Webster, University of Hawaii (Honolulu), captured sprint titles in A. A. U. meet.



A
P
D
A

F
Q
C

The Cynic
By Robert Richards
Phi Lambda Theta
West Tennessee
State Teachers College

Old Gus wasn't really a cynic. The boys thought he was, but they were prejudiced. Gus was just the janitor, and all janitors are queer ducks to college men.

Gus had a dollar bet with Brady, the drug clerk, that Swanson would defeat Gray-side on Thanksgiving Day. Gus had lost a dollar each year for the past six years on that game. But, as he always confided to Nelly, a team can't win every time. Gus was still grateful for that six bits he cleaned up back in '28 when Swanson won by a safety.

So you understand, one couldn't exactly call Gus a cynic. The Dead-bones thought he was because he laughed when they said "Brute" Howell had school spirit.

It wasn't that Gus was skeptical concerning school spirit. He knew that that was what caused the boys to nearly fall off the bleachers in their enthusiasm every Saturday afternoon during November.

Nor did he dislike "Brute" Howell. Quite to the contrary, he was counting on "The Brute" to bring back his dollar from Brady. It was just funny, that's all. Gus had to laugh.

It never would have happened if the Dead-bones had not decided to hold their annual "smoker" on Tuesday night—at least Gus wouldn't have known about it. But that was Gus' night to work.

The Dead-bones had over twenty rushees there that night. Fellows who were outstanding. Denham, the school editor. Starns, an honor man. "Brute" Howell, Swanson's triple-threat star. Dead-bones was a select crowd.

Gus sat out in the dark hall and watched them through the half-open door. Several of the faculty were there; and Michaels, one of Swanson's most illustrious sons, the man who made the safety against Gray-side in '28, was an honored guest.

Gus loved to watch them. It made tears come into his eyes when they stood up and softly sung of alma mater. Gus, though he had never passed out of the eighth grade, always felt as if he were a Swanson man.

He wasn't the only one that showed emotion. Michaels sobbed openly when he had finished his speech, and Denham, the editor, could not speak for the tears that choked his voice. Gus felt awfully sorry for him. He had always suspected Denham of being something of a snob.

Rather than show any emotion, "Brute" Howell covered his face with his hands and staggered through the door. Sympathetic hands patted him gently on the shoulder as he passed. Howell was overwhelmed with feeling in spite of himself.

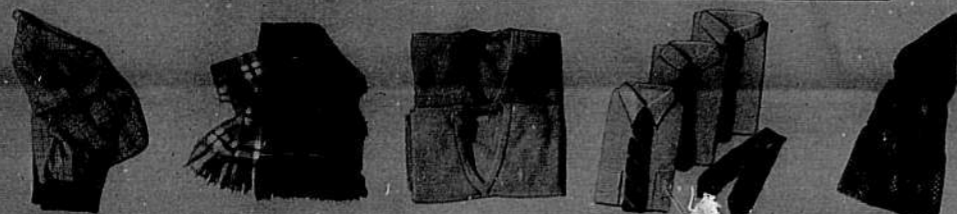
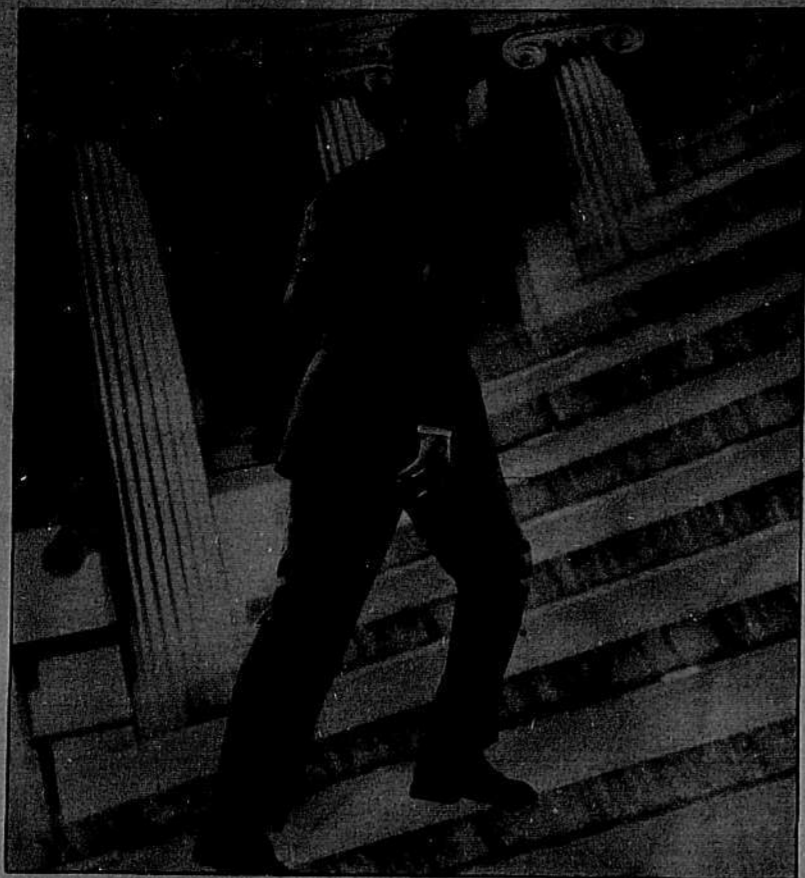
Gus followed him down the stairs to see that he found the door without accident.

He could hear "The Brute" groaning as he hurried down the hall. And he was muttering, "These cigars... these damned cigars!"

Gus wasn't really a cynic. It might have been school spirit. But he couldn't help laughing. You see... he had to clean it up!

COLLEGIATE DIGEST Section is looking for Short Short stories. Manuscripts must be accompanied by return postage. Payment at regular rates upon acceptance. Address: Story Editor, COLLEGIATE DIGEST Section, P. O. Box 472, Madison, Wis.

A New Step in the Fashion Picture



GOIN' PLACES - and he's wearing a suit of rough tweedy fabric with a shirred back which requires the half belt and full vent. It's the latest in sports clothes for everyday campus wear. If the rest of his ensemble is as up-to-the-minute as the suit, he's wearing a button down oxford shirt in white, blue or grey and brown buckskin shoes with black soles and plain tips. **Accessories** - (1) Plaid sports jacket with side vents and military pockets—to be worn with grey flannel trousers; (2) wool

mufflers; (3) pull-over sweaters of cashmere wool, with sleeves; (4) oxford cloth shirts with buttoned down and short rounded collar attached—the neckwear is crocheted; (5) lounging robe of silk foulard.

INFORMATION on correct fashions for college men will be sent upon request. The New York fashion staff of Collegiate Digest will answer any direct questions you may send. Address: Fashion Editor, Collegiate Digest, P. O. Box 472, Madison, Wis.

COURTESY ARROW AND CHARTER HOUSE

YESTERDAY AND TODAY



"DAISIES WON'T TELL" - but we will. To the left is a picture of an early day daisy chain at Vassar College (Poughkeepsie, N. Y.) and to the right, still another. This time it's last year's daisy chain procession at New Rochelle College (N. Y.). Anyway, the daisies haven't changed in the past twenty years or so, even if the girls have. EWING GALLOWAY, KEYSTONE PHOTOS



Copyright, 1934, E. J. Reynolds Tobacco Company



CRIMP CUT
DOES NOT BITE
THE TONGUE
LARGEST-SELLING
SMOKING TOBACCO

MELLOW
MILD
SLOW BURNING
2 OUNCES OF
PIPE JOY

PRINCE ALBERT the national joy smoke!



HE TAKES TO THE AIR - He's Robert Crawford, flying baritone, Newark Symphony Orchestra conductor, radio star and concert soloist on his way to New York City to fulfill an engagement.



ON A PLATFORM - not "on the fence", but they're fencing just the same. Picture shows the team working out on the new fencing platform recently completed at Rollins College (Winter Park, Fla.), where they work outdoors the year around.



HE WRITES THE MUSIC and the words as well. Gabriel Jacoby, University of Alabama (University, Ala.) is the author of "The Crimson Tide," Alabama's football song, "Alpha Phi Delta Rose" his fraternity's song

Report Card

By Prof. Metro Ebb Hack

BOOKS
C SWEET TALK, by Beatrice Burton Morgan (Farrar & Rinehart, \$2). The "eternal triangle" blossoms out in new form, with plenty of sweet talk by three sisters who try to win the attention of wealthy bachelors and end up in homes more suited to their middle-class Cleveland background. Story holds interest well, but is too obviously pointed to catch the attention of film scenarists.

B CAPTAIN CAUTION, by Kenneth Roberts (Doubleday, Doran, \$2.50). A salty sea and smashing romance provide the interest in this thriller, built with the War of 1812 as a background. A Maine skipper abandons the ordinary life of the "old salt" and turns privateer to provide the reader with high adventure. The routine of his new business is not routine for the reader, however, and Writer Roberts has avoided even the slightest possibility of your experiencing a dull moment.

MOVIES

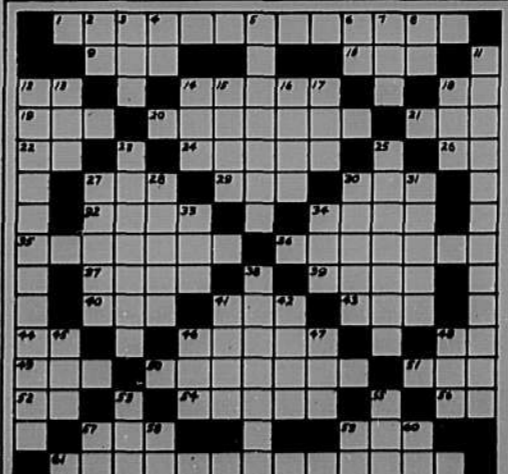
A THE FIRST WORLD WAR proves again that the editorial pen of Laurence Stallings can boil down the horrors of a four-year holocaust into a brief but forceful message for world peace. With the narration held down to a bare minimum, the film gives you the brutality and inconsistencies of the World War in behind-the-scenes shots, many of which came from the cinematographic archives of the nations participating. Proof of the ability of the picture to "speak for itself" is given by the many slashing, booming, gory minutes during which the expert commentator, Pedro de Cordoba, remains silent.

B KID MILLIONS - When you pack into one film Eddie Cantor, Ann Sothern, the gags of Sheekman, Perrin and Johnson, the songs of Donaldson, Kahn, Lane, Adamson and Berlin, the dances of Seymour Felix, and the color combinations of Willy Pogany you have a Goldwynesque extravaganza that will wow you for a full hour and a half without the slightest bit of effort on your part. Despite the fact that some of the gags are already great-grandparents, Director Roy Del Ruth puts the products of these stars together into such a truly creditable production that you forget that Cantor is doing and saying much the same thing that he has before on the air and screen.

RADIO

A SUNDAY EVENING SYMPHONY—Victor Kolar directs the Ford Symphony Orchestra in a full hour of classical presentations. Each program features distinguished guest conductors or artists. Presenting the best in modern jazz in the Fred Waring broadcasts, the sponsor is certainly not neglecting the classics, for this program is one of the better of the symphonic hours. (CBS-WABC network, Sundays, 8 P. M. EST.)

CROSSWORD PUZZLE



- Horizontal**
- College in Greater Boston.
 - Tap lightly.
 - Also.
 - New England (Abbr.).
 - Sets layer upon layer.
 - Part of "to be".
 - Mineral in native form.
 - University at New Brunswick, N. J.
 - Mate offspring.
 - Sun god.
 - Fresh water ducks.
 - Upon.
 - Skill.
 - Mountains (Abbr.).
 - Nickname for doctor.
 - Small glass bottle.
 - He who attends Eion.
 - University at Ithaca, N. Y.
 - Untamed.
 - German gauge of marks (Abbr.).
 - Streets (Abbr.).
 - Mascot.
 - To piece out.
 - Seventh note of the scale.
 - Inhabitant of Ainu.
 - Supported by.
 - Short for Edwards.
 - College at Collegeville, Pa.
 - Three.
 - Egyptian Sun God.
 - Coverings.
 - Athletic Association (Abbr.).
 - The edge of cloth.
 - Light colored bear.
 - College at Annapolis, Pa.
 - Snake-like fish.
 - An entry.
 - Seniors (Abbr.).
 - To jeer.
 - College at Hartford, Conn.
 - College at Salem, Virginia.
 - Declares.
 - The appendage of an animal's body.
 - Funeral hymn.
 - Cream.
 - A youth.
 - A piece of timber.
 - University at Granville, Ohio.
 - Famous leaning tower.
 - Melody.
 - Girl's name.
 - Part of a circle.
 - Non United States (Abbr.).
 - Anglo Saxon money of account.
 - Debutante.
 - Entire.
 - Pronoun.
 - Parent.
 - Short for Alfred.
 - Electrical Engineering (Abbr.).

By V. L. Pailekas '38
Civil Engineer—Northeastern University

Beginning with this issue, Collegiate Crossword Puzzles will be incorporated in this Section as a regular weekly feature. FIVE DOLLARS will be paid for puzzles accepted and none will be returned unless accompanied by return postage. Address: COLLEGIATE DIGEST SECTION, P. O. Box 472, Madison, Wis.

Last Week's Puzzle

