

Ano	Gasolina	Etanol	Flex	Total
1975	905,706	0	0	905,706
1976	905,706	0	0	905,706
1977	905,706	0	0	905,706
1978	905,706	0	0	905,706
1979	905,706	3,114	0	908,820
1980	626,467	240,643	0	867,110
1981	344,467	136,242	0	480,709
1982	365,434	232,575	0	598,009
1983	78,618	579,328	0	657,946
1984	33,482	565,536	0	599,018
1985	28,655	645,551	0	674,206
1986	61,916	697,049	0	758,965
1987	31,190	458,683	0	489,873
1988	77,312	566,482	0	643,794
1989	260,821	399,529	0	660,350
1990	542,855	81,996	0	624,851
1991	546,258	150,982	0	697,240
1992	498,927	195,503	0	694,430
1993	764,598	264,235	0	1,028,833
1994	1,127,485	141,834	0	1,269,319
1995	1,557,674	40,706	0	1,598,380
1996	1,621,968	7,647	0	1,629,615
1997	1,801,688	1,120	0	1,802,808
1998	1,388,734	1,224	0	1,389,958
1999	1,122,229	10,947	0	1,133,176
2000	1,310,479	10,292	0	1,320,771
2001	1,412,420	18,335	0	1,430,755
2002	1,283,963	55,961	0	1,339,924
2003	1,152,463	36,380	48,178	1,237,021
2004	1,077,945	50,949	328,379	1,457,273
2005	697,004	32,357	812,104	1,541,465
2006	316,561	1,863	1,430,334	1,748,758
2007	245,660	107	2,003,090	2,248,857
2008	217,021	84	2,329,247	2,546,352
2009	221,709	70	2,652,298	2,874,077

BRASIL: LICENC

Unidade:

Fonte:

Elaboração:

Nota:

IAAMENTO DE AUTOMÓVEIS E COMERCIAIS LEVES POR TIPO DE COMBUSTÍVEL

Número de veículos

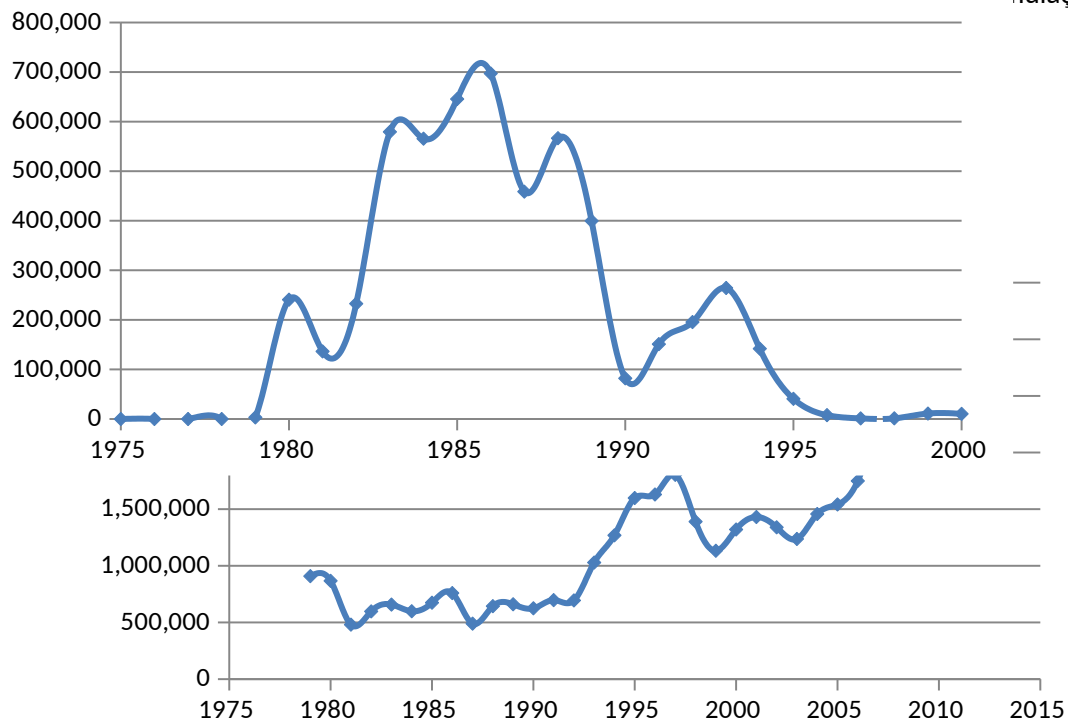
Associação Nacional dos Fabricantes de Veículos Automotores - Brasil / ANFAVEA.

União da Indústria de Cana-de-açúcar - UNICA

- 1)
- 2)
- 3)

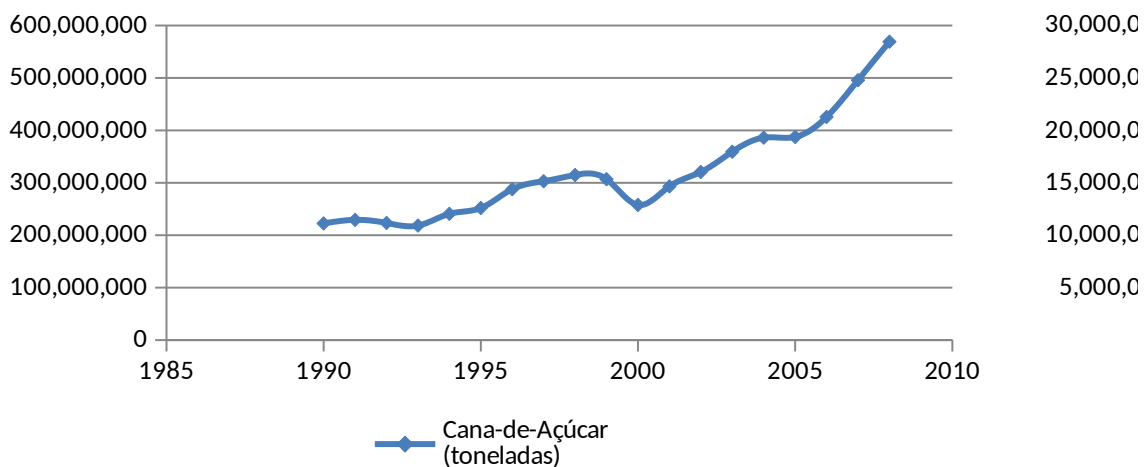
Etanol

is movidos a diesel).
nulação.



Ano da Safra	Cana-de-Açúcar (toneladas)	Ethanol (Mil litros)	Açúcar (toneladas)
1990	222,429,160	11,515,151	7,365,344
1991	229,222,243	12,716,180	8,604,321
1992	223,356,251	11,675,506	10,066,490
1993	218,336,005	11,276,370	10,269,996
1994	240,712,907	12,682,373	12,618,165
1995	251,827,212	12,578,315	13,522,129
1996	287,808,142	14,344,128	14,802,380
1997	303,057,415	15,396,463	14,880,691
1998	314,922,522	13,848,033	17,942,109
1999	306,965,623	13,021,804	19,387,515
2000	257,622,017	10,593,035	16,256,105
2001	293,050,543	11,536,034	19,218,011
2002	320,650,076	12,623,225	22,567,260
2003	359,315,559	14,808,705	24,925,793
2004	386,090,117	15,416,668	26,621,221
2005	387,441,876	15,946,994	25,905,723
2006	425,535,761	17,719,209	29,882,433
2007	495,723,279	22,526,824	31,026,170
2008	569,062,629	27,512,962	31,049,206

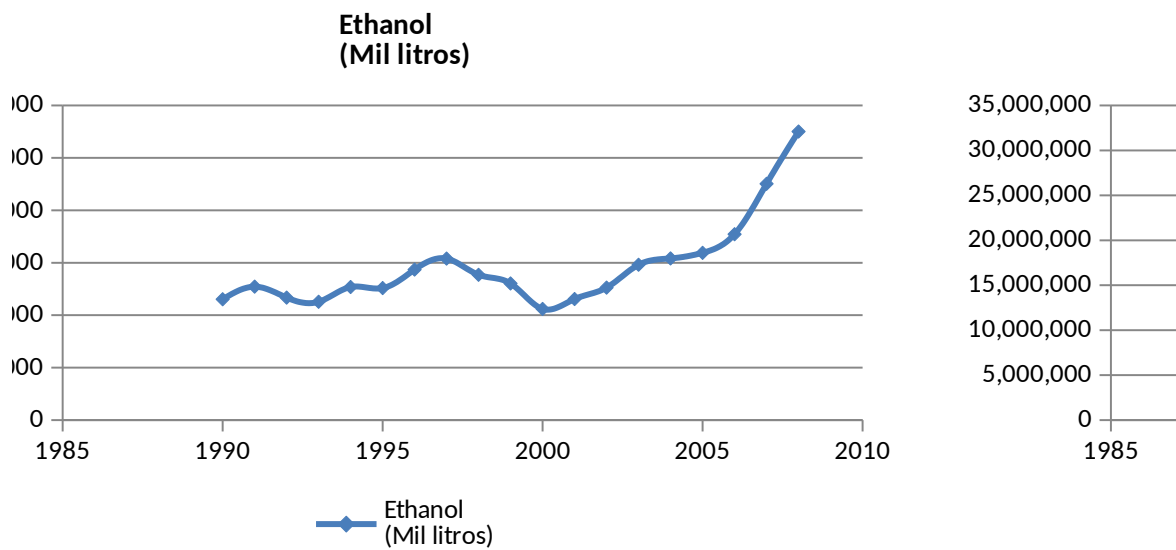
Cana-de-Açúcar (toneladas)



Ano	Gasolina	Etanol anidro	Etanol Hidratado	Etanol Total
-----	----------	---------------	------------------	--------------

1995	14.1	2.3	6.5	8.8
1996	16.4	2.8	6.4	9.2
1997	18.0	3.4	5.4	8.8
1998	18.0	3.7	5.0	8.7
1999	17.7	4.1	4.6	8.7
2000	17.1	3.9	3.6	7.5
2001	16.9	4.1	2.8	6.9
2002	16.1	5.0	2.8	7.8
2003	17.0	5.2	2.4	7.6
2004	17.7	5.1	3.1	8.2

Média				
-------	--	--	--	--



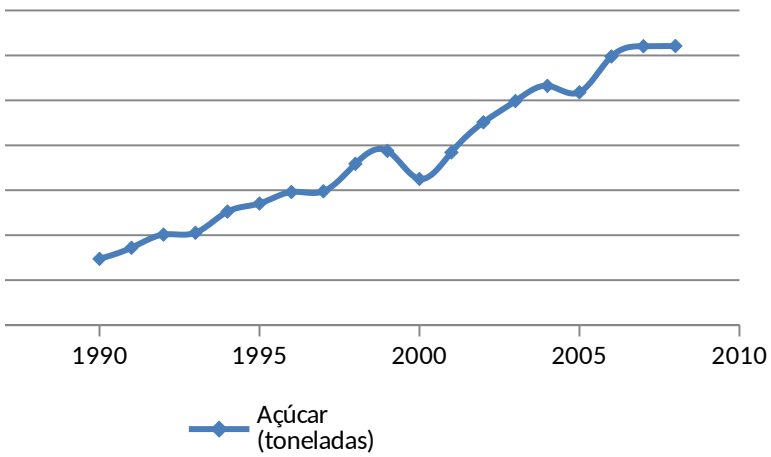
% Gasohol

16%
17%
19%
21%
23%
23%
24%
31%
31%
29%

Ano	Etanol Total
1995	8.8
1996	9.2
1997	8.8
1998	8.7
1999	8.7
2000	7.5
2001	6.9
2002	7.8
2003	7.6
2004	8.2

23%

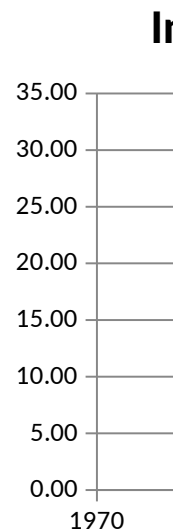
**Açúcar
(toneladas)**



Ano	Frota Automotiva
1998	17,056,413
1999	18,809,292
2000	19,972,690
2001	21,236,011
2002	23,036,041
2003	23,669,032
2004	24,936,451
2005	26,309,256
2006	27,868,562
2007	29,851,610
2008	32,054,684
2009	34,536,667
2010	37,188,341

Fonte: Departamento Nacional de Trânsito (DENATRAN)

Year	International Raw Sugar Cane Price	Relative Attractiveness
1975	20.49	190%
1976	11.58	107%
1977	8.11	75%
1978	7.82	72%
1979	9.66	89%
1980	29.02	269%
1981	16.93	157%
1982	8.42	78%
1983	8.49	79%
1984	5.18	48%
1985	4.04	37%
1986	6.05	56%
1987	6.71	62%
1988	10.17	94%
1989	12.79	118%
1990	12.55	116%
1991	9.04	84%
1992	9.09	84%
1993	10.03	93%
1994	12.13	112%
1995	13.44	124%
1996	12.24	113%
1997	12.06	112%
1998	9.68	90%
1999	6.54	61%
2000	8.51	79%
Média	10.80	100%



International Raw Sugar Cane Price

