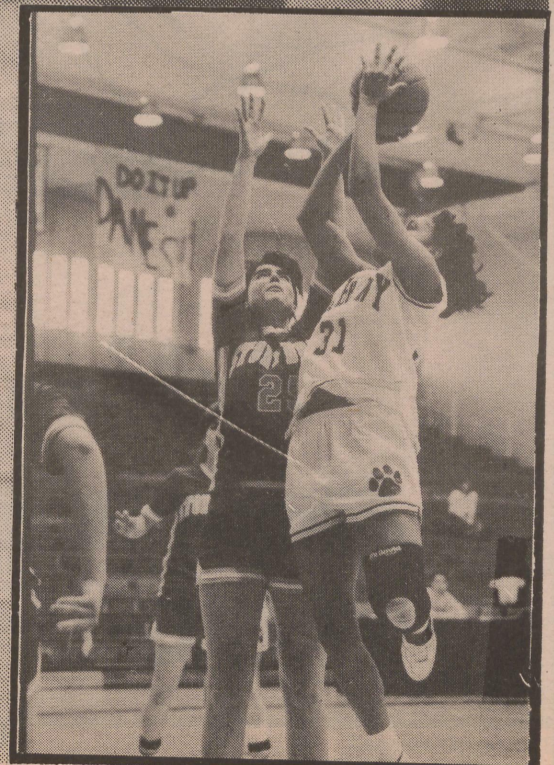
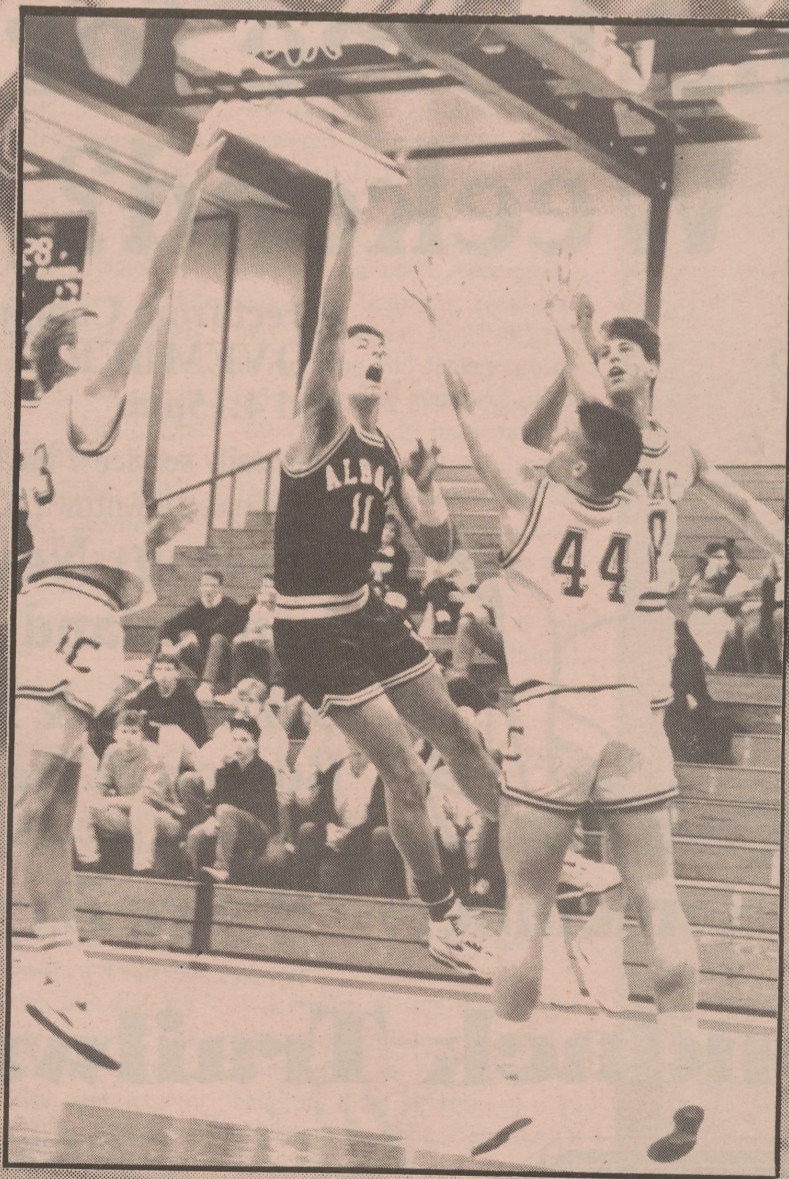
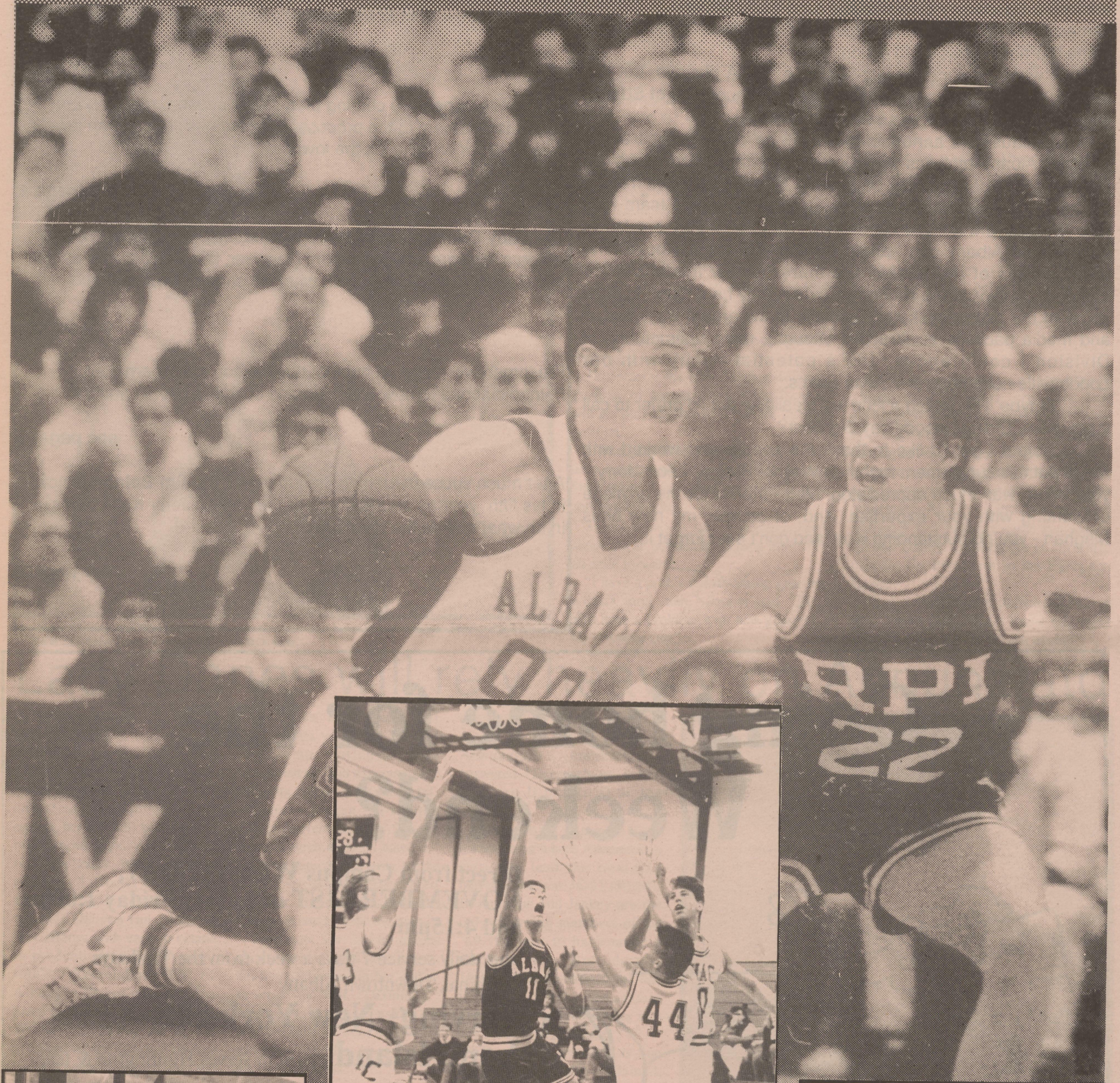


Friday, November 16, 1990

Sports Supplement



FROM THE EDITOR

With the end of the semester inching closer ever so slowly and finals creeping up on us, I prefer to focus on another topic- basketball. As those who know me well can attest, my devotion to hoops is so extreme that viewing the sport usually takes precedence over my studies. I realize that this is not a good habit, but for me, basketball (especially college) has become an addiction. I generally stick with the hard stuff (Division I), but this semester, I'll be doing some experimenting with what looks to be some top-notch Division III action.

I wasn't around for last season's NCAA playoffs, but I've been told that Albany's win at Potsdam, with hundreds of SUNYA students in attendance, was truly awesome.

Because an announcement will be coming soon about whether Albany athletics will upgrade its program on its way to Division I, this season may be about a lot more than just making the playoffs. Another strong showing from the men's team may help to sway the athletic committee's decision if they are led to believe that Albany can handle playing with the big boys. The other pieces of the puzzle are there- a new fieldhouse on campus, a major arena downtown (which may be enough to draw some of the bigger basketball schools to the area if the financial and media package is attractive enough), rapid restructuring of Division I conferences, and a potential rivalry with our Loudonville neighbors, the Siena Saints.

Maybe I'm getting a little too idealistic, but I'd prefer to call it optimism. Did somebody say Big East?

Before I go, I'd like to thank the people who worked with me to put this supplement together. Wayne, Patrick, Leon, Jerry - your effort was much appreciated. Matt - thanks for the privilege of working with your expertise. And, of course, my new boss Meghan - you do outstanding work and don't ever forget it.

Andrew Schitz

CONTENTS

Captain **Michael Shene** will be leading the Great Danes, a team with a much different look than last year. Wayne Stock gives a profile of Albany's 6' 6" center.

see page 3

Once again, **Laurie Annunziato** will run the show for the Lady Danes. Andrew Schotz explains why she's so valuable to the team.

see page 3

The **Great Danes** are coming off a stellar season, reaching the NCAA tournament in the process. How will this year's team fare? Wayne Stock will give us the lowdown.

see page 4

The **Lady Danes** suffered through what head coach Mari Warner called a "disappointing" season. However, they have a new system and Patrick Cullen will explain what we should expect to see.

see page 5

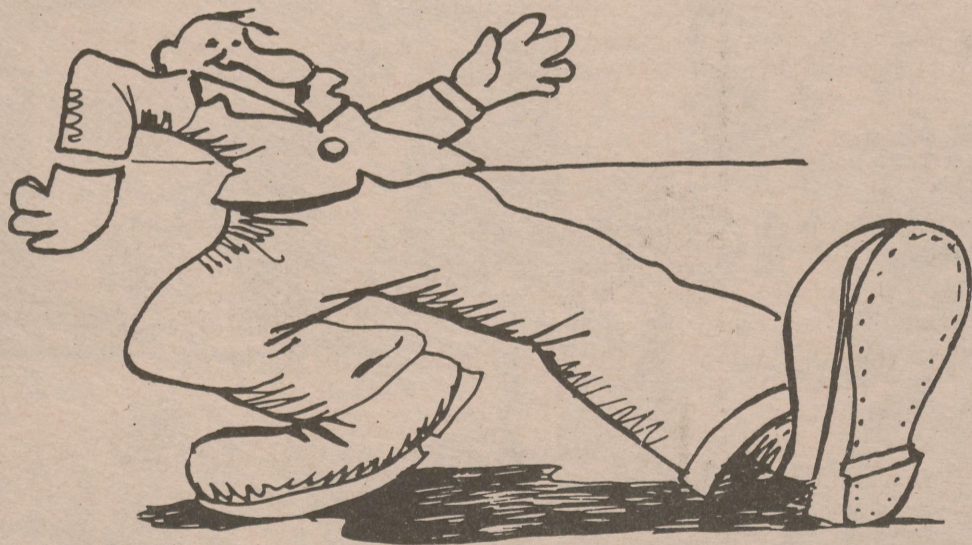
Freshmen will make up most of this season's **JV team**. Leon Feingold spoke to new coach James Jones to get his outlook.

see page 6

After much success running the junior varsity, **Jim Boland** is now in his fifth year as an assistant for the varsity. Jerry Kahn clues us in on what makes the team tick.

see page 7

Going home for the Weekend?



Direct from Campus **WEDNESDAY, NOVEMBER 21ST** and every Friday 1:00pm and 4:15pm

plus daily service 7 days a week from the Trailways Terminal, Downtown Albany

Serving: New York City

Long Island (4:15pm serves Huntington & Islip)

Syracuse & Buffalo

Boston & New England

Also direct service back to Campus on Sundays

Remember: *"We're Experienced."*

Adirondack Trailways

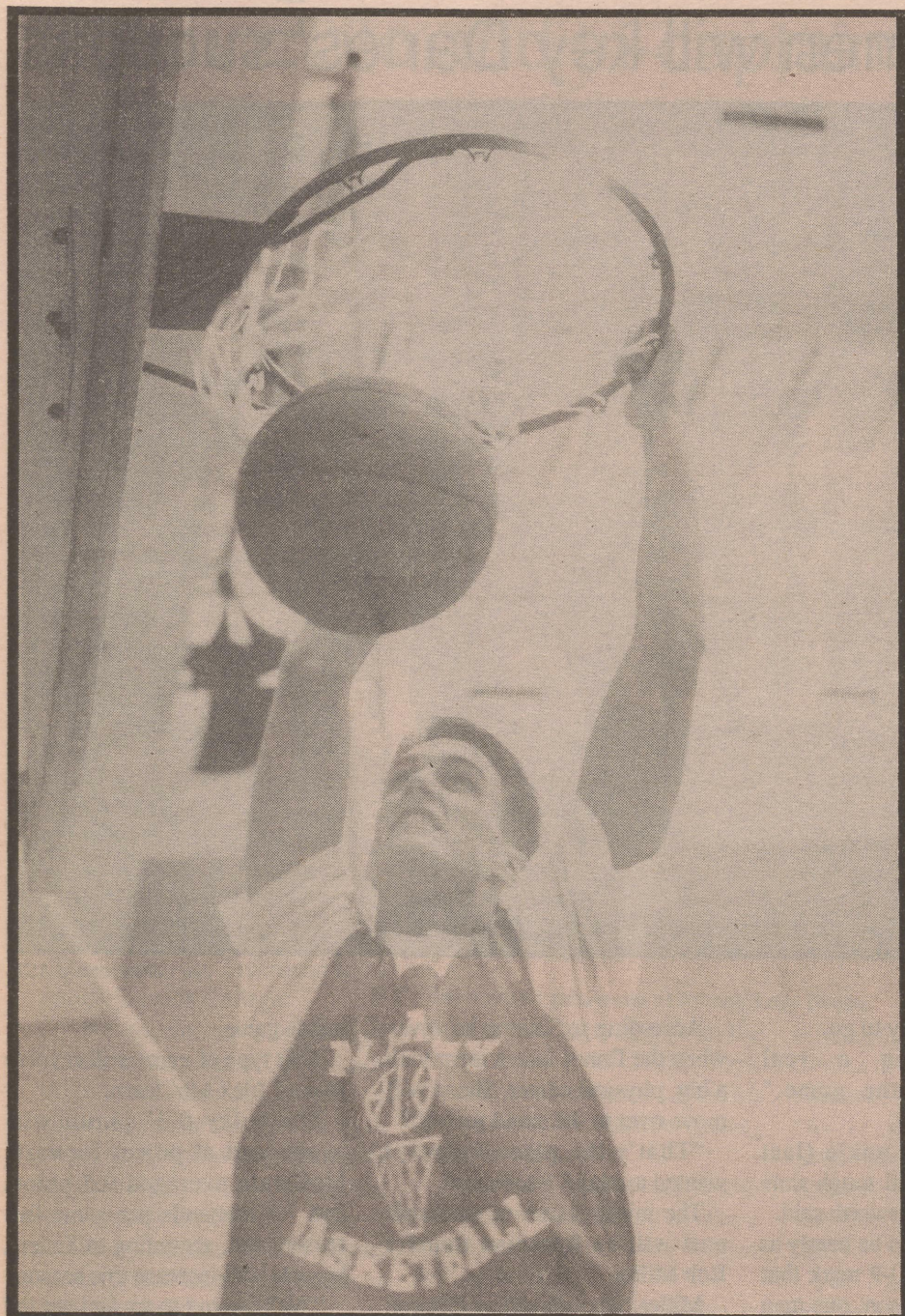
We're going places



360 Broadway
Albany, N.Y.
436-9651

TICKETS SOLD AT QUICK PRINT - Student Union Bldg. SUNY

Playoff visions are on Mike Shene's mind



Raquel Moller UPS

Michael Shene will be showing his stuff this year.

By Wayne Stock
EDITOR-IN-CHIEF

Don't think that Michael Shene doesn't remember Albany's loss to North Adams State in the NCAA Division III Tournament last year.

"I keep thinking about that weekend," said the 6'6" center of this year's team. "I keep thinking about how things could have been."

The Danes, who hosted the sectionals of the tourney last year, would have advanced to the Final Four with two victories.

The blue-eyed captain will once again look to lead his team back to the big show. A team with only four players returning and a much different look than last season.

"Last year we had a lot of chemistry," Shene said. "This year I feel we have more talent."

Shene, a senior, had a team-high average of 14.9 points per game and 7.8 rebounds per game last season. He also led the Danes with 72 blocked shots.

"He'll have a big year again," said head coach Richard Sauers. "We expect him to score what he did last season."

This season the Plattsburgh native and graduate of Mount Assumption Institute will get playing time at the small forward position.

Shene played the low post as a two-time member of the Adirondack Empire State team. It is a position he feels he is comfortable with.

Sauers, however, has expressed concern about Shene potentially getting burned by an agile forward.

"I have a problem with Shene guarding a quick three man," Sauers said. "But I also have a problem with him guarding a big physical guy."

Shene is confident he can handle the job if called upon.

"I feel I can stay with them," said the thinly-built Shene. "It will also balance out on the offensive end because they'll have to cover me."

No matter what position he's at, Shene is sure to frustrate his opponents with a quick inside move and an accurate jumper to boot.

The youngest of three brothers, Shene credits his older brothers with part of the success he has achieved.

"They got me interested in the game," Shene said. "As a kid, they always found a spot for me to play."

But for the youngest Shene, the family inspiration goes even further. Whether it's in front of a capacity home playoff crowd or 200 people in Eastern Connecticut, there's one face you will always see in the crowd.

"Ever since I've been here, my dad would be sitting behind our bench," Shene said. "I think he has missed something like four games. I give him all the credit in the world."

In his last year as a college player, Shene realizes there are very few openings at the professional level. Those openings are even fewer for someone coming out of a Division III program.

Shene is hoping that after graduation he can follow in the footsteps of former teammate Andrew Goodemote, who averaged 11.4 points a game last season for the Danes. Goodemote is currently playing for Plymouth in the European league.

"It's something I'd definitely like to do," Shene said. "But I know that there comes a time when it has got to end."

Lady Danes will rely heavily on Annunziato

By Andrew Schotz
SPORTS EDITOR

Here's a tip for this year's Lady Danes basketball fans—watch the point guard. Without any clear-cut superstars this season, her job will become that much more important. A large part of whether Albany sinks or swims will depend on the play of junior Laurie Annunziato and whether she can run Albany's new offense with enough octane to produce some decent point totals. Remember, 40 of Albany's 70 points per game have been lost to graduation. Without dumping all of the pressure of the offense on her back, it seems apparent that the Danes' W and L columns will clearly reflect the playmaking abilities of Annunziato.

Her first opportunity as a floor general came in 1988, her freshman year. Lisa Parrish was injured and Sylvia Caldwell became sick. This left Annunziato with the starting job and she hasn't let go since.

It was overwhelming at first, but she lost her butterflies quickly. "I know I could handle it," she said. "It just took time."

Annunziato also started at the point for last season's 13-12 Dane squad. Her modest total of 7.6 per game was fourth on the team behind Gina Richardson, Pam Wilson and Sue Stempsey. This trio was graduated, however, making Annunziato the squad's top returning scorer.

But 7.6 ppg will not satisfy

Lady Danes' head coach Mari Warner this year. She labeled Annunziato's offensive play "inconsistent" and expects to see her point guard up her stats a bit.

Annunziato, an All-section player at Nanuet High School, couldn't agree more. "I hated it," she proclaimed, referring to the scoring see-saw she experienced last year. "I would get 15 points one game and two the next."

Teammate Sue Jackey agrees about Annunziato's streakiness, but has confidence in her ability to break out of it. "Definitely," Jackey said when asked if Annunziato's scoring will increase. "She has been hitting the three-pointers."

But Annunziato realizes fully that while she should have a higher scoring average, it's not as crucial to the team as her passing is. "I don't feel that I should get 15 points per game or I didn't do the job," she explained.

Annunziato's total of 91 assists (3.6/game) in 1989-90 was team-high, but less than par for a good point guard. "The assists will go up," she promised. "(Last year) I was tentative to pass inside... This year we finally have height—three six foot plus players. It makes me very happy. I'll finally have someone to throw in to."

Even if Annunziato's assist average wasn't spectacular, she finished her second season with Albany as the school's #4 all-time assist leader (165). Is she

consciously trying to break the record? That question Annunziato emphatically answered, "Definitely no. If I do it, great. If not, (it's) no big loss."

Three-point shooting is another area where Annunziato's statistics lead the returning players. She was 16-53 (30.2%). In fact, she and Jackey are the only returning members of the '89-'90 unit to have made a three-pointer. But despite Jackey's observations, Annunziato doesn't see the three-pointer as a key element in her game.

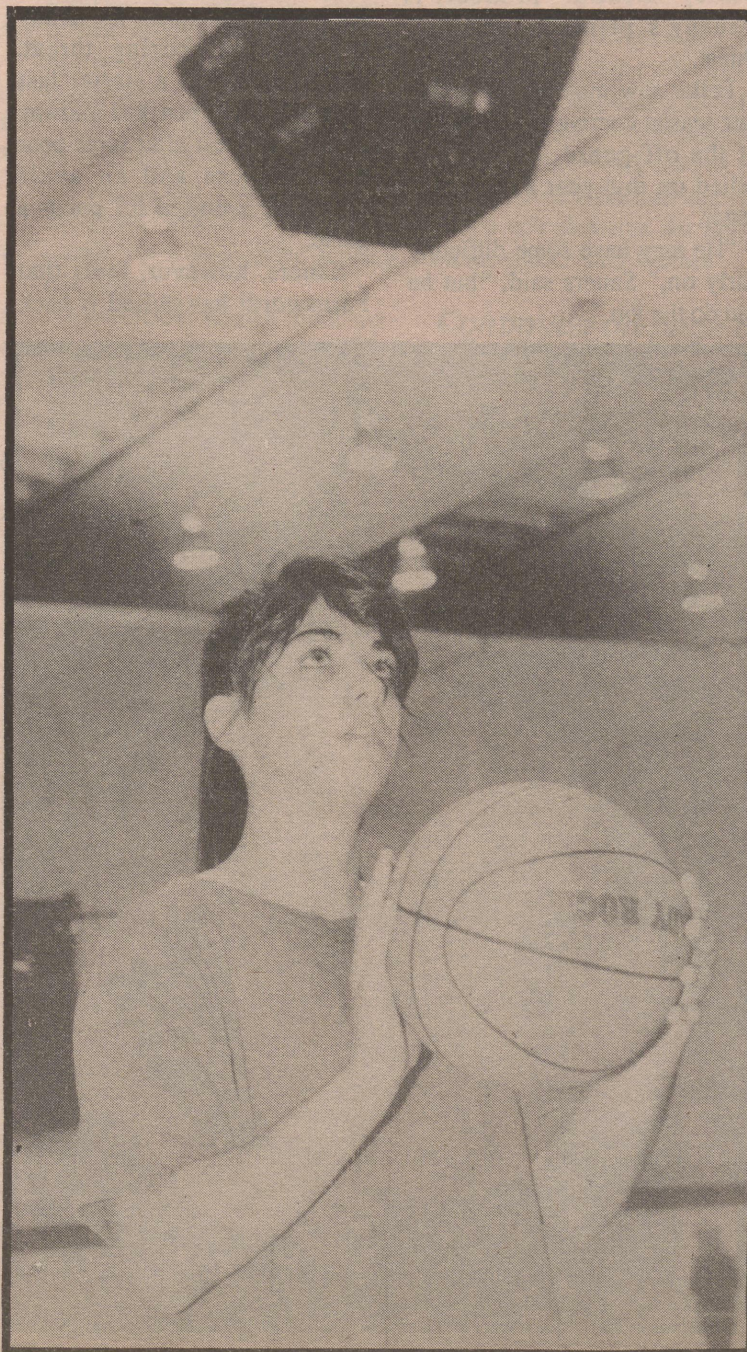
"Three-point shooting is Sue Jackey's role," she explained. "She sets herself up for the three-pointer. I never consciously shoot it. I won't look for it."

Free-throws were shots that Annunziato didn't look for last year either. She didn't care at all for charity tosses, mostly due to nerves. The evidence is her .577 percentage (45-78).

"I choke on free-throws, but I'm more confident this year," Annunziato said. "I don't like being up there in front of a lot of people all alone. But I do not worry this year. I just go up and shoot. If I miss, (it's) no big deal. I go back and forget about it."

What is a big deal is how Annunziato will lead the Lady Danes as they run a new simpler set offense. It will consist of four players on the perimeter, leaving

Continued on page 7



Armando Vargas UPS

Laurie Annunziato has her sights set on improving the Lady Danes.

Replacing lost offense will be on agenda

All new backcourt, play of big men will key Danes' success

By Wayne Stock
EDITOR-IN-CHIEF

When the Great Danes take the floor in the season opening Capital District Tournament, don't expect to see many of the same forces that led Albany into the third round of the Division III NCAA Tournament last year.

With the loss of five seniors from last year's squad, Albany enters the 1990-91 campaign with an abundance of youth and only four players from last season, a situation that has head coach Richard Sauers concerned.

"Right now we don't have the chemistry we had last year," Sauers said. "We're proceeding slow because of the newness of the people, but we've made a great deal of progress."

Sauers, with a record of 580-265, enters his 35th season with the Danes as the winningest active coach in Division III basketball.

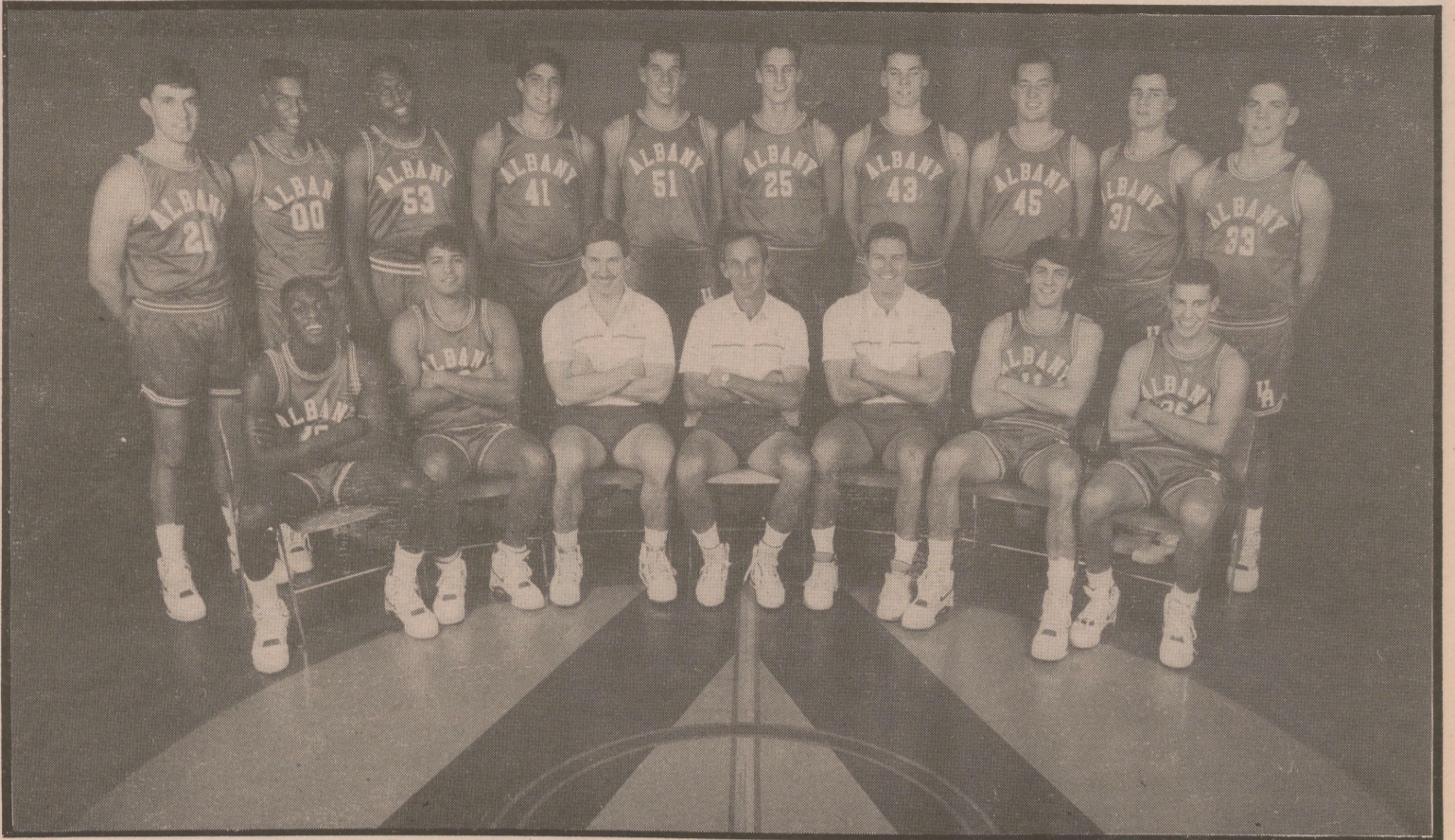
The big key for Albany early on will revolve around their perimeter game. The loss of Stephen Mulderry, Andrew Goodemote and Dennis Walker, who combined for 32.7 points a game and a total 102 three-pointers, will leave a big void to fill.

Juniors Ed Feller and Jeff Farnsworth will attempt to fill the slack as the starting backcourt tandem.

Feller, known for his all-out style of play, averaged 4.3 points per game last season and will get the call at the point. The 6-2 Valley Central product is Albany's primary long ball threat.

Feller saw most of his action last season coming off the bench at the off-guard, but will be relied on this year as the pace setter.

"He may have some difficulty early on," Sauers said, "but he can do the job."



Jim Lukaszewski ASP

The 1990-91 University of Albany Great Danes

"I have to make an adjustment," Feller said. "I have more of a shooting guard mentality. I have to learn how to go to different speeds."

Feller saw action as a point guard at the junior varsity level.

Farnsworth, who played last season at the small forward, will move back to his natural position as a shooting-guard. "I'd much rather play the two (guard) over the three (forward)," Farnsworth said.

With a deadly outside touch, Farnsworth possesses the ability to be a big scoring threat. Farnsworth was a starter last season but was benched midway through the year after some poor performances and an ankle injury. He averaged 6.7 points a game.

Sauers, however, feels that Farnsworth has pulled it back

together and is ready to go.

"Jeff's making a real commitment to the game," Sauers said.

"I sprained my ankle (last year) and had a real tough time coming back," Farnsworth said.

If the Danes are to be nearly as successful as the 20-9 mark that they posted last season, one man will once again have to come up big. That man is Michael Shene.

Shene, who will again start at center, led the Danes in scoring and rebounding last season, averaging 14.9 and 7.8 per game, respectively.

"I'm looking to take it one more notch," said the 6-6 senior captain. "We're a young team but we're going to surprise some people."

Despite his thin frame, Shene is usually able to get good position under the boards. Combine that with a pinpoint baseline jumper, Shene will once again be a force in the middle.

According to Sauers, however, when the Danes face a team with a big, physical center, Shene will move over to the small forward.

"That's the place I always wanted to play," Shene said.

The initial starter at the small post will be freshman transfer Bob Miller.

Miller, who played at Clareon State, a Division III school, combines a good outside touch with a great court quickness.

Sauers is confident that Miller will have no trouble getting used to the system.

"He's adjusted well," Sauers said. "He can make a lot of big plays."

"I just want to come in and do the best that I can do," Miller said. "The only thing that is hard is learning the plays. Once you get that down, it's pretty easy."

Last season, Albany was a big perimeter shooting club. This season, the Danes will look to establish more of a physical,

inside game.

That type of game will revolve around Alex McClearn.

The bulky 6'3" junior will again start at power forward. McClearn averaged 9.5 points and 7.5 rebounds per game last season, and, according to Sauers, his role will increase this season.

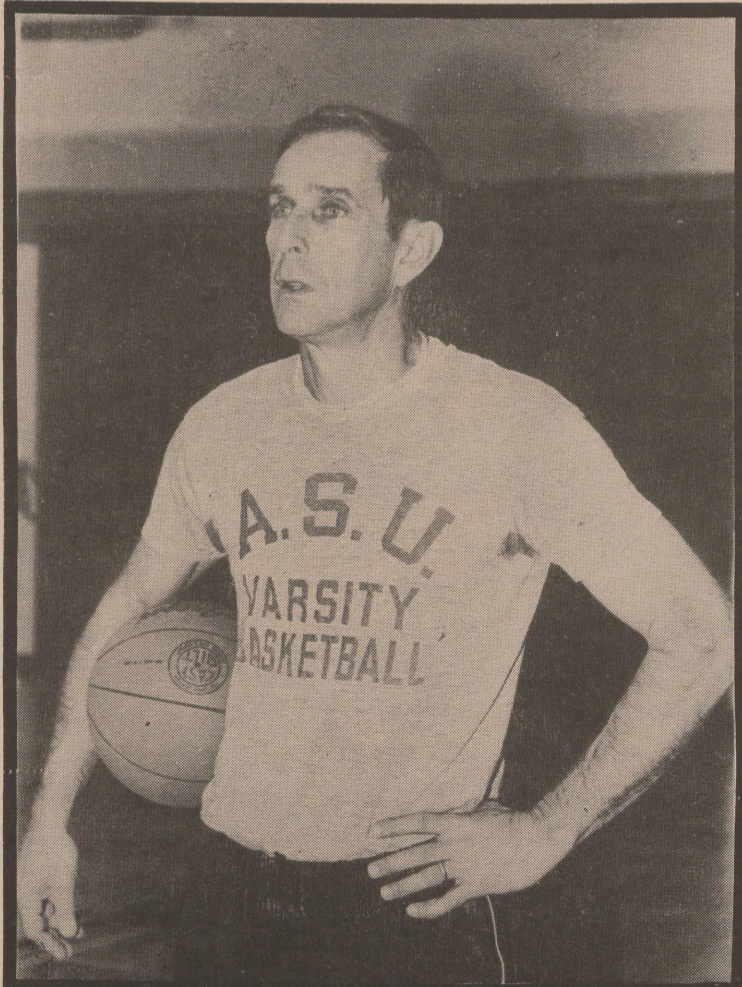
"We're going to try and get the ball into Alex a lot more," Sauers said. "He'll be ready when the bell rings."

"I'm going to try and take advantage of every open chance I get," McClearn said. "I'm going to make a lot more moves."

McClearn came on strong at the end of last season. If he can establish a solid, outside touch, combined with his already proven big inside play, the Danes are going to be tough to beat.

When Shene moves over to the low post, look for Mark Zuklie to join McClearn down

Continued on page 7



Coach Richard Sauers will soon start his 35th season for Albany.

Men's Roster

40/41 Scott Altrui	SO	6-5	Forward/Center
44/45 Richard Bosch	SO	6-4	Forward
42/33 Tom Carlson	SO	6-3	Guard
34/35 Richard Cohen	SO	5-11	Guard
20/21 Jeff Farnsworth	JR	6-4	Guard/Forward
10/11 Ed Feller	JR	6-2	Guard
30/31 Jason Graber	FR	6-4	Forward
52/53 Alex McClearn	JR	6-3	Forward
32/00 Bob Miller	FR	6-3	Guard/Forward
14/15 Gary Murray	FR	5-10	Guard
54/55 Steve Pettus	SO	6-6	Center
22/23 Steve Ries	JR	6-1	Guard
24/25 Michael Shene	SR	6-6	Forward/Center
50/51 Mark Zuklie	SR	6-6	Forward Center

as 1990-91 basketball season begins

Annunziato and tri-captains will try to perfect new offense

By Patrick Cullen
STAFF WRITER

Any new season brings changes for a team, no matter what sport it may be. New players must try to accustom themselves with the particular team and somehow find their role in it all. A coach may employ new strategies in the hope that the team will become a better one. A team must also adjust to the loss of key players it may have depended on before and hope that a player (or players) will rise to guide the team through the season.

SUNY Albany's women's basketball team must be able to handle similar changes in order to succeed this season.

The Lady Danes of last year ended the season with a record of 13-12. They made it to the New York State Tournament, mostly because of their power rating, which is a calculation of the quality of their opponents. They lost in the first round to #1 seed Hartwick College.

"We encouraged a very tough schedule last season," said coach Mari Warner. "Competing against some of the best teams in New York and other states will definitely make winning consistently tough."

Unfortunately, Warner thinks that this season's schedule is much tougher than that of last year. She stated, somewhat painfully, "Since we are mulling a move into Division II, we were dropped off the schedule of some weaker teams, like SUNY Binghamton and Manhattanville, and subsequently we were added to the schedule of some tough teams, like SUNY Buffalo and the College of Saint Rose."

Warner doesn't want the easy way out, though. "I believe in a strong schedule," she said. "It makes the team work that much harder and gives real experience to the younger players still trying to learn the system." Through the season, the Lady



The 1990-91 University of Albany Lady Danes.

UPS

Danes will face traditionally tough foes like New York University (twice), Keuka College, SUNY Buffalo (twice) and Hartwick.

In order to understand the changes, it is necessary to take a look at what the Lady Danes will be losing.

Standout Gina Richardson is probably the most important loss. As a senior, she led the team in scoring (16.3 points per game) and rebounding (9.1 assists per game), was second in assists and blocked shots, and was third in steals. She finished as the second leading scorer in school history.

About Richardson, Warner said, "Besides missing her offensive and defensive capabilities, the team will miss the leadership she displayed on and off the court."

Another important factor is the loss of Pam Wilson. Pam was second in scoring (9.5),

rebounding (7.4), steals and blocked shots, and had an excellent free-throw percentage. She is also #6 on Albany's career rebounding list. However, Warner will have Pam by her side this season as an assistant coach.

Sue Stempsey was an excellent outside shooter whose speciality was the three-pointer. Last year, she led the team in treys and was third in scoring (9.2) and assists. Warner termed Stempsey's performance in the last 5 games of the season as "awesome."

Lisa Ginsberg was an intimidator on defense who led the team in blocked shots and was third in rebounding (5.1).

Lisa Carracio played both the point-guard and the off-guard (shooting-guard) positions.

Although SUNYA will definitely miss the skills and the leadership of these players, the team sports a strong cast of

returning and new players which will give the team vitality.

Five-foot, two-inch junior point-guard Laurie Annunziato was called on as a freshman to lead the offense after injuries depleted the point-guard position.

"Laurie has an extraordinary amount of experience going into her junior year," Warner said. "More experience than you would usually find in a junior."

As the starting point-guard, Laurie will lead the team's offense and try to create scoring opportunities for her fellow teammates.

Last year, she topped the team in assists and steals and scored 7.6 points per game, fourth on the team. Warner will look to Laurie for a little more scoring this year.

Five-foot, seven-inch tri-

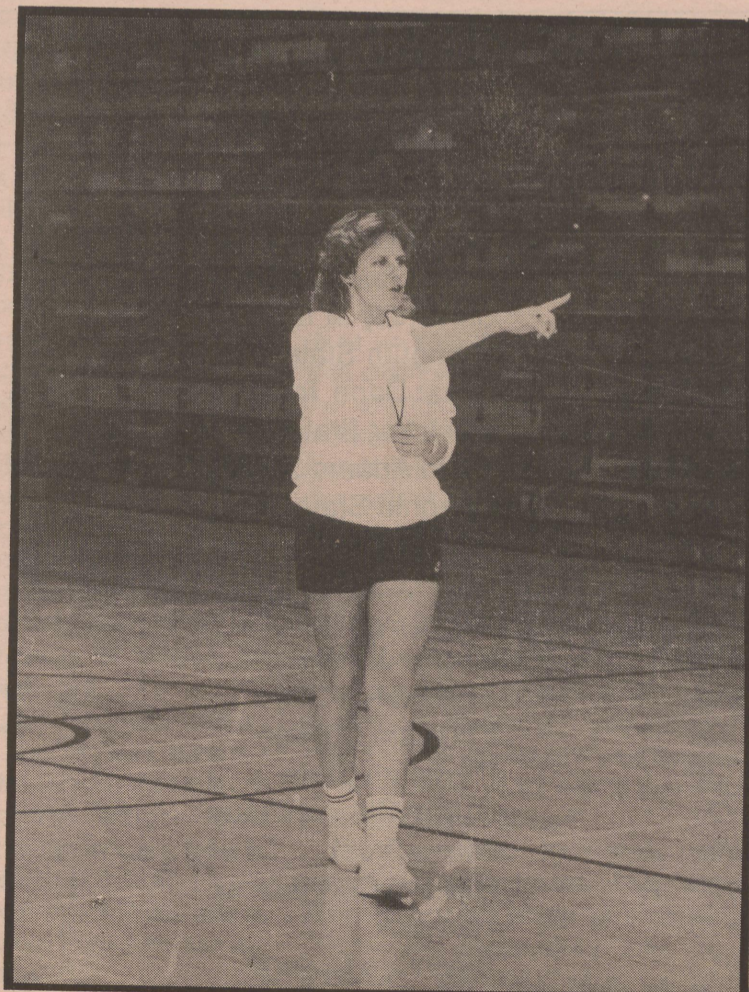
captain Faith Miller will play either the off-guard or the small-forward. Last year, she was used primarily as the sixth person, or the first person to come off the bench. She achieved a scoring average of 6.8 points per game and shot over 50 percent from the field, the only player on the team to do so. According to Warner, Miller will be in the starting lineup this season and Warner will expect her to carry more of the scoring load this year.

Junior small-forward Tara Mizell, another tri-captain, penetrates opposing defenses well. "Tara is a very dedicated, hard worker who serves as a positive role model off the court, which complements her abilities on the court," said Warner.

Continued on page 6

Women's Roster

21 Laurie Annunziato	JR	5-2	Guard
44 Ikeuchi Franklin	SO	5-10	Center
35 Suzanne Jackey	SO	5-7	Guard
31 Tanya Johnson	SO	5-6	Guard
25 Patsy Kivlehan	FR	5-11	Center
32 Melita Marchese	JR	5-8	Guard
12 Faith Miller	JR	5-7	Guard
23 Tara Mizell	JR	5-7	Forward
20 Lynda Nealis	FR	5-7	Guard
45 Aimee Phelan	JR	6-1	Center
24 Kristy Sprague	FR	5-9	Guard
42 Casey Stanley	SO	5-7	Guard
30 Michele Traver	SR	6-0	Forward



Head coach Mari Warner was not pleased with her team's record

File

New coach takes helm of freshman-rich junior varsity

By Leon Feingold
STAFF WRITER

With most of the attention focused on Albany's varsity basketball team each year, the junior varsity team tends to be overlooked. But the perennial success of the J.V. Danes cannot long remain unnoticed.

Last year, the J.V. team performed admirably, winning 70 percent of their 20-game schedule to finish with a 14-6 record. They defeated strong teams statewide, including rivals Oneonta and RPI en route to their successful season. As evidence of their strength, five members of this year's varsity team (Scott Altrui, Richard Bosch, Steve Pettus, Steve Ries and Rich Cohen played on last year's J.V. squad, an unusually high number.

This year's team, according to head coach James Jones, has the potential to match, if not exceed, the success of last year's team. By listening to him, one gets the impression that the team has their work cut out for them.

"We've had two scrimmages so far, against two tough teams," Jones said. "In the past, we've always started out with solid performances. It didn't happen that way in our last two scrimmages. We have our first game on the 16th of November (against RPI), and there are a lot of things we need to work on. I think, though, that we should have sufficient time to do that."

The 1990-91 JV team will be made up almost completely of freshmen, Jones explains, because the whole idea of the JV system is to prepare the players for the varsity team. Those who do not make varsity their second year do not have a place on the team, with all the younger talent coming in. In this way, the younger players get their chance to show what they can do on the court, and get a feel of the game with hands-on experience.

With this year's team, Jones feels that instead of having one dominating player to look to, he likes the idea of having what he calls "a well-rounded team." The two co-captains of the squad, 6'6" forward/center Paul Fitzpatrick and 5'10" guard Dan Keegan, figure to be looked to

for leadership by the coaches and their teammates. Both should make a big impact on this year's team, but they are not going to be the only players on the team, and Jones wants to make that clear.

"We're going to have four or five guys averaging in double figures, or close to it each game," Jones said. "I don't foresee us having a real go-to guy. During the season, I think we're going to work in unison, where everyone's going to get the chance to score and shoot."

This is Jones' first year coaching Albany basketball. He has had previous experience as a basketball coach in summer leagues and in Comsewogue, a Long Island high school where he worked alongside his brother, who was the school's coach.

Now aside from coaching the basketball team at Albany, he also instructs several basketball classes during the week.

One reason why Jones has taken so well to the Albany system is because he attended school here. He played on the JV basketball team for two years and was named MVP. He then moved on to play on varsity before he graduated in 1986.

When the previous coach, Lowes Moore, left to join a monastery last year, Jones was in the right place at the right time. After he was graduated, he had been working as a businessman for National Cash Register. He learned about the vacancy while coaching basketball and attaining his Masters' degree in marketing; the JV job was perfect for him.

In three or four years when he gets his degree, he will have to decide whether to stay in coaching or to return to the business world. For now, however, Jones is content to exert his efforts towards improving the team that he is now with and preparing them for the season ahead.

There is one problem that Jones sees that is out of his control, and that is fan attendance at home games. As Jones put it, "We'd like to see some fans come out and watch us play...we'd like to try to get some fans in the stands, to come and watch the kids play. It will be competitive and there will be some excitement."



Armando Vargas UPS
Junior varsity begins its season on Monday at home against Rensselaer

1990-1991 University at Albany Varsity Basketball Schedules

Men			
11/16-17	Capital District Tournament	H	6:00-8:00
	Skidmore vs. Union		
	R.P.I. vs. Albany		
12/1	Binghamton	A	8:00
12/5	Hamilton College	A	8:00
12/7-8	Alfred Tournament	A	TBA
12/12	University at Buffalo	A	8:00
12/15	Plymouth State	H	7:30
12/28-29	Great Dane Tournament	H	6:00-8:00
1/3	Montclair State	A	7:30
1/5	North Adams State College	A	7:30
1/9	Oneonta State	H	8:00
1/12	Buffalo State	A	8:00
1/15	Union College	A	8:00
1/17	Ithaca College	H	8:00
1/19	Cortland State	H	8:00
1/22	Plattsburgh State	A	8:00
1/26	Potsdam College	H	8:00
1/28	Plymouth State	A	7:00
1/31	SUNY Old Westbury	A	7:30
2/2	Stony Brook	H	8:00
2/5	Eastern Connecticut	H	8:00
2/10	Hartwick	A	3:00
2/13	Skidmore College	A	8:00
2/23	R.P.I.	A	8:00

Women			
11/17-18	Stony Brook Tournament	A	1:00/3:00
11/20	Union College	H	7:00
11/25	Capital District Tournament	A	8:00
27-28			1:00/3:00
12/1	R.P.I.	A	6:00
12/3	New York University	H	7:00
12/5	Eastern Connecticut	A	7:00
12/8	Ithaca College	A	3:00
12/12	University at Buffalo	A	6:00
1/6	Hunter College	H	2:00
1/9	New York University	A	7:00
1/12	Buffalo State	A	6:00
1/16	Western Connecticut	H	7:00
1/19	Cortland State	H	2:45
1/22	Plattsburgh State	A	6:00
1/26-27	Lady Dane Tournament	H	2:00-4:00
1/31	Hartwick College	A	7:00
2/2	Nazareth College	H	5:45
2/4	College of St. Rose	H	7:00
2/9	Old Westbury	H	7:00
2/11	Utica College	H	7:00
2/16	Keuka College	H	5:45
2/19	Hamilton College	A	7:00

Assistant coach gives his thoughts on the Great Danes

By Jerry Kahn
ASSOCIATE SPORTS EDITOR

James Boland, who is one of Albany's assistant basketball coaches, is starting another year with the Great Danes.

Of his seven years at Albany, four have been spent as Richard "Doc" Sauers' assistant coach, and for the other three, Boland was the junior varsity coach.

Boland also teaches social studies part-time at St. Anne's Institute to 10th and 11th graders.

He has a wife, Terri, and a two-year-old son, who is named Brendon.

In 1977, Boland was graduated from Shaker High School, where he was on the basketball team. Five years later, he graduated from Oneonta State, where he also played basketball. In his senior year, he was the captain of his team. He played point guard and off-guard in college.

Before he came to Albany, Boland coached the Troy High School freshman team to an 8-10 record.

He said that his record was "good, if you saw my team. We couldn't even do a lay-up."

In the three years in which he coached the Great Danes' junior varsity team, Boland's records were 17-3, 12-10, and 12-9,

respectively. Overall, his record is 41-22 (.651).

Currently, as the Danes' assistant coach of the varsity team, Boland works with guards, assists in game preparation and recruiting, and helps out with the local players.

Boland looked ahead to the upcoming season, which begins on Friday.

"We had a very good season last year, and we're hoping to, if we can, improve upon that," Boland said. "It's just a question (of) how well we come together. We don't know how we're going to react. (On) this team, we see a lot of talent. (However,) they haven't played together."

When asked about the team's goals, Boland replied, "We don't generally give a player a goal, necessarily. We certainly look for Alex McClearn and Michael Shene to get...seven, eight to ten rebounds. We'd like both of them to get close to double figures."

McClearn and Shene, who is the team captain, can be used as a power forward and a center, interchangeably.

Boland said that he felt that McClearn is the team's best defensive rebounder. He was voted that honor by his teammates.

"I think you can look for

Michael (Shene) to come in and have a good season," Boland said. "He's just beginning to come back from the (ankle) injury. We push Michael because we expect a lot out of him."

"Another key to our season should be Alex McClearn," Boland said. "He's a presence down low. He's a good rebounder. This year, I think...he's going to have a really good season."

Other important players are juniors Ed Feller, who is a point guard, and Jeff Farnsworth, who is a two-guard.

"It seems like he's very dedicated to having a good season," Boland said, of Farnsworth. "In the practices, he's playing very well."

Of Feller, Boland said, "He's a good athlete, and he'll do well."

When asked what changes there will be this year, Boland answered, "This year...we're going to be looking at the post a little bit more."

Boland cited some of the other players who will be important for the Great Danes. He named Mark Zuklie, Bobby Miller, Steve Ries, and Gary Murray.

"Bobby Miller...has got a lot of talent," Boland said. "People enjoy watching Bobby. He plays good defense. He runs the ball. He's only a freshman. Nothing

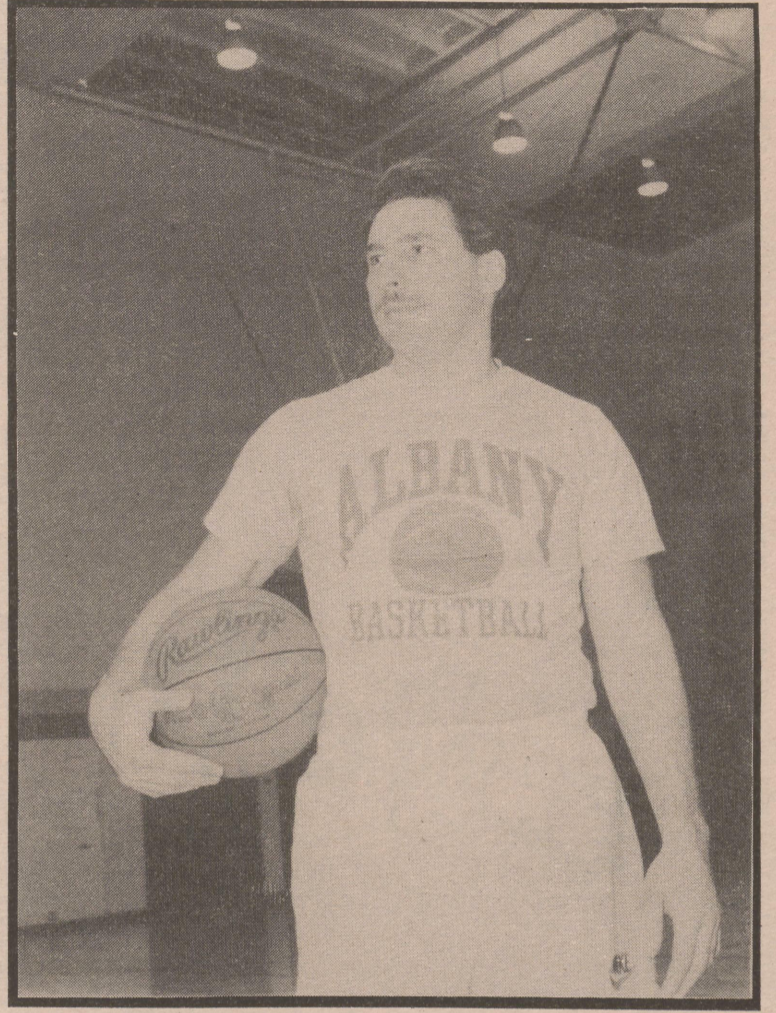
seems to faze him too much."

Miller is a small forward.

Ries, who is a guard, played one year of varsity at Oneonta, which should give depth,

according to Boland.

Gary Murray, who is a freshman point guard, is quick. "He'll be a crowd pleaser when he gets out there," Boland said.



Armando Vargas UPS
Former JV coach James Boland is now an assistant with the varsity.

Annunziato

Continued from page 3

only one in the low post. "Last year, 'flexibility' (the name of the offense) was confusing," Annunziato admitted.

Her teammates seem to be calm about the transition they will face and whether Annunziato can pull them through it.

"Laurie can handle the situation," Faith Miller said. "I feel comfortable with her. She's trustworthy."

She's a very strong team leader," Jackey said. "When she calls the plays, you listen or you will get yelled at. She is very structured."

Annunziato isn't bothered by the fact that she isn't one of the tri-captains and acknowledges that there are boundaries that her role does not cross.

"I am the leader 'sometimes'," Annunziato emphasized. "I call the plays. That's as far as it goes."

Miller is less fervent in trying to distinguish whether point guard duties should overlap with those of captain.

"Her leadership is very important because she is running the offense," Miller said, "and has to tell people to relax and where to go. We need as much leadership as we can get."

Annunziato's ability to direct the team will show up at both ends of the court - she will be calling some defensive plays, too. Not a bad choice, considering her 74 steals last season which put her into the #8 slot in Albany history (118).

"We'll play a quick, running defense," Annunziato said. "We'll be flying out at people, with no rest, always moving."

Annunziato seems comfortable with the relationship she has with her coach.

"She expects 100% every day and takes no less," Annunziato stated. "If you want success, you have to work hard."

Annunziato appreciates the concern Warner has for the team, though. "She cares about all of us," she continues. "She helps me with work and personal matters. ...If you could call a coach a friend, she comes closest to being one."

While Albany looks to rebound after a

less-than-satisfying season, Annunziato is happy to be along for the ride. She doesn't regret her decision to come to Albany over Delaware, Hofstra, Muhlenberg and Stony Brook. As she puts it, "What other team would take a 5' 2" point guard?"

Men's Basketball

Continued from page 4

Zuklie played for Albany during the 1988-89 season, but took last year off to concentrate on his studies.

Zuklie can keep the ball alive on the boards and is a good short-range shooter.

The other big man for the Danes is Scott Altrui. The 6'5" lefthander played the low post for the junior varsity last season, but will be moved up this year to the high-post as a backup to McClearn and Shene.

Coming off the bench as a guard is Garry Murray. "He's going to get some playing time," Sauers said.

Murray has uncanny speed and can prove to be a big asset when the Danes go to a breaking offense.

Steve Ries, a junior varsity player last season, will also see some playing time.

Ries was a starter at Oneonta State two years ago, and according to Sauers, might be used when they are in a zone.

Richard Bosch, Tom Carlson, Richard Cohen and Steve Pettus round out the team, but may not see much court time.

Albany will play 14 of their 24 regular season games on the road. According to Sauers, that situation arose because a few teams backed out of commitments to play in University Gym.

Twelve of the teams on the Danes' schedule were in postseason play last year, including four who appeared in the NCAA tournament.

Women's b'ball

continued from page 5

The last of the tri-captains, senior forward Michele Traver, is a very good rebounder who possesses a range of about 18 feet on her jump shot. Michele also has excellent mobility and agility for a

six-footer.

Sophomore guard Tanya Johnson, in Warner's words, "has begun to show increased maturity from last year." Johnson's forte is the up-tempo game, which utilizes her speed and ballhandling skills.

Five-foot, seven-inch guard Suzanne Jackey is known for her deadly outside shot and her deft passing ability.

Guard/forward Casey Stanley, a 5'7" sophomore, has been the biggest surprise for Warner. "So far in pre-season," Warner said, "Casey has been a very pleasant surprise with outstanding play on both ends of the floor." Warner added, "She has definitely been the most consistent player this season so far."

Five-foot, ten-inch center/forward Ikeuchi Franklin, according to Warner, has the ability to be great. "The biggest problem with Ikeuchi," Warner said, "is her lack of consistency." Warner will look to Franklin to score down low under the basket, where she is very hard to defend.

Five-foot eight Melita Marchese plays both guard and forward. She is an excellent passer and goes to the hoop exceptionally well.

The Lady Danes feature a number of newcomers who will help the more experienced players on the squad.

Freshman Lynda Nealis, a 5'7" guard from Kings Park, can play either the point-guard or off-guard position. "Lynda is a very hard worker with an abundance of potential," Warner stated.

Tonya Morrissey, a 5'10" junior transfer, plays power forward. Warner intimated, "Tanya is extremely strong and a very tough rebounder. In addition, she has a real nose for the ball."

Five-foot eight freshman Kristy Sprague, a guard from Moriah Center, is a quality outside shooter with the ability to shoot the 3-pointer. Warner wants Sprague to work on her foot quickness in order to help improve her defense.

Two new players who will add size to the team are freshman Patsy Kivlehan and junior Aimee Phelan.

Kivlehan is a six-footer from

Garnerville who will play center for the Lady Danes. Warner glowed, "Patsy has the best attitude on the team; she is extremely enthusiastic and is a very coachable player."

Phelan is a junior center who hasn't played basketball competitively for four years. Warner expects to slowly assimilate the 6'1" Albany native back into basketball.

"Aimee's defense is very strong," Warner said. "Her size and long arms will help add blocked shots and needed rebounding to the squad."

In order to create more individuality on offense, Warner has instituted a new four perimeter, one post offensive system. In laymen's terms, four players will be situated around the area of the three-point line and one will be around the basket. This allows each individual player to use her talents more. This offense is supposed to create more open shots for the outside shooter. On the other hand, this system will also create lanes to drive through for the slashers and the penetrators.

An unexpected plus for the Lady Danes so far this year is improved free-throw shooting, previously a weak spot.

In practice, Warner makes her players shoot ten with their eyes closed and ten with their eyes open. She claims it helps the players think more and spells increased concentration when shooting free-throws in a game. So far, Warner said that most of her players are above the 60 percent mark in free-throw percentage.

Defensively, Warner is employing an aggressive, up-tempo style of defense. "I will make good use of the press, full and half-court," she said, "and will also use a more aggressive version of the typical quarter-court defense." She added, "I expect a good amount of forced turnovers by our defense, which will in turn create opportunities on offense."

The Lady Danes have their faults, though. As the regular season approaches, Warner foresees a couple of weaknesses. "Defensive rebounding may be a problem," she said. "Also, timing of passes could be a problem."

SUNY ALBANY
University Concert
Board
presents:

Edie Brickell
&



New Bohemians

WITH SPECIAL GUEST:

CAZTEC
CAMERA

WEDNESDAY, NOVEMBER 28, 1990

Palace Theater • 8 PM

Tickets: \$ 10 (w/student I.D)
\$ 12 (w/out student I.D)

Available
through
Ticketron